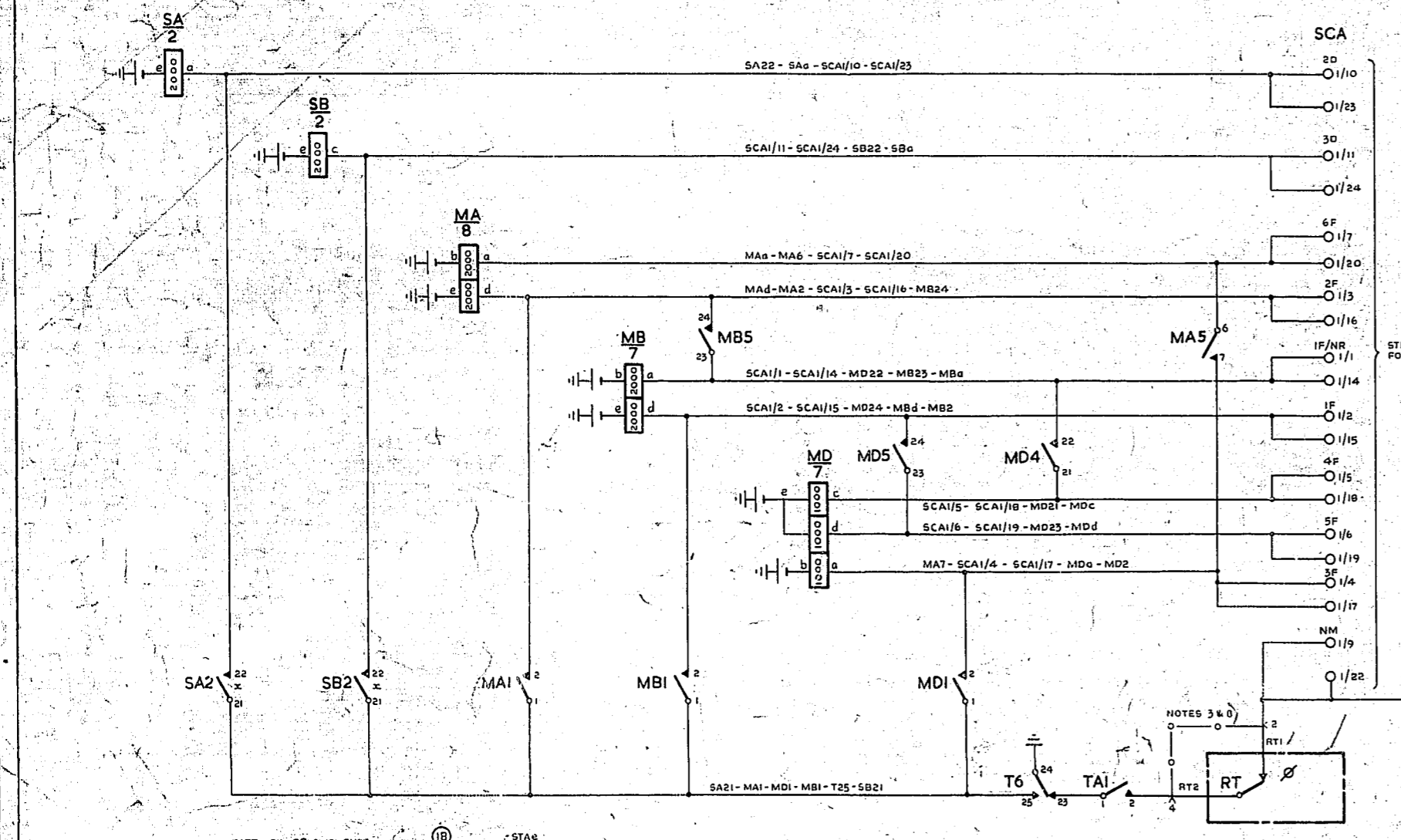
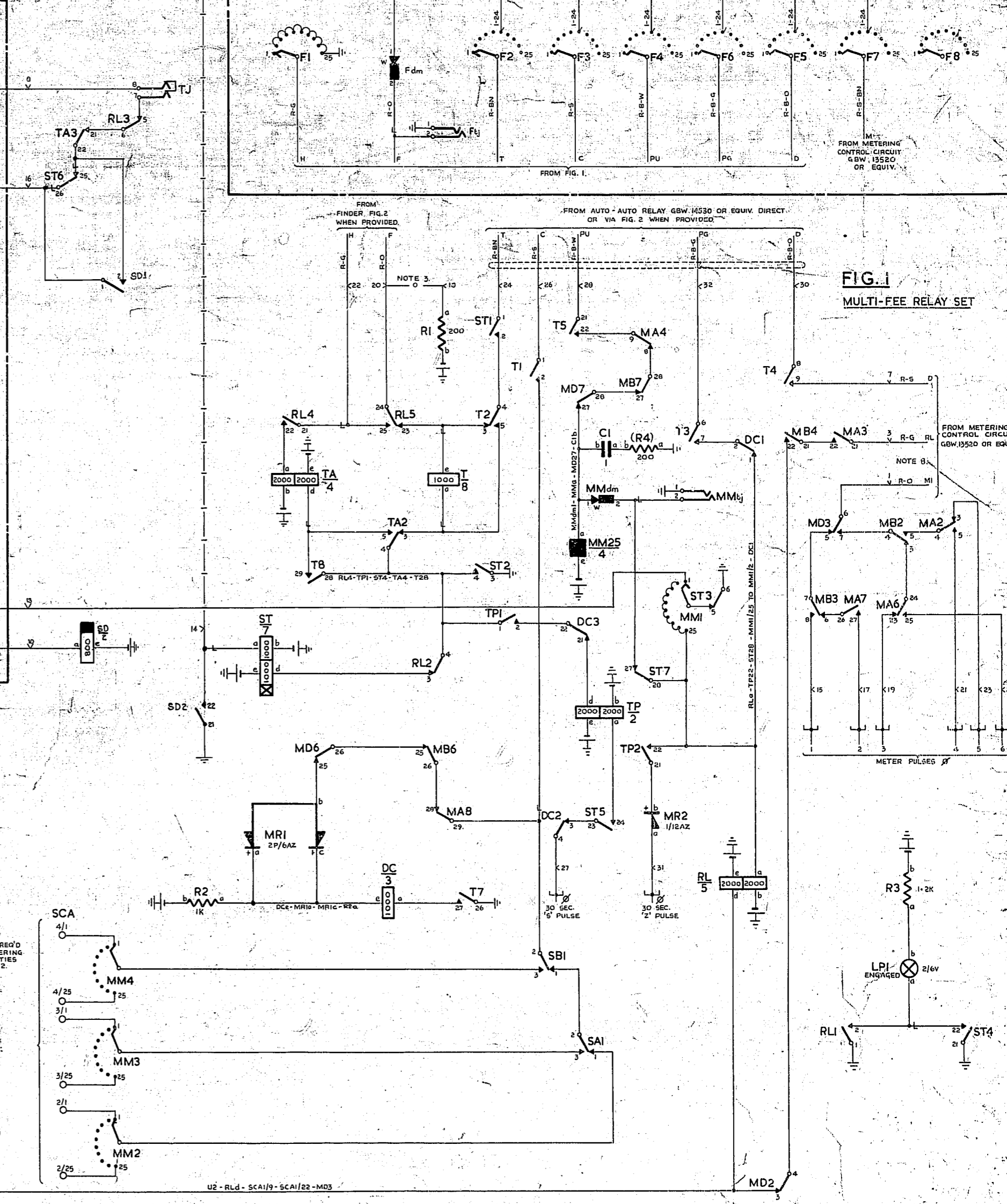
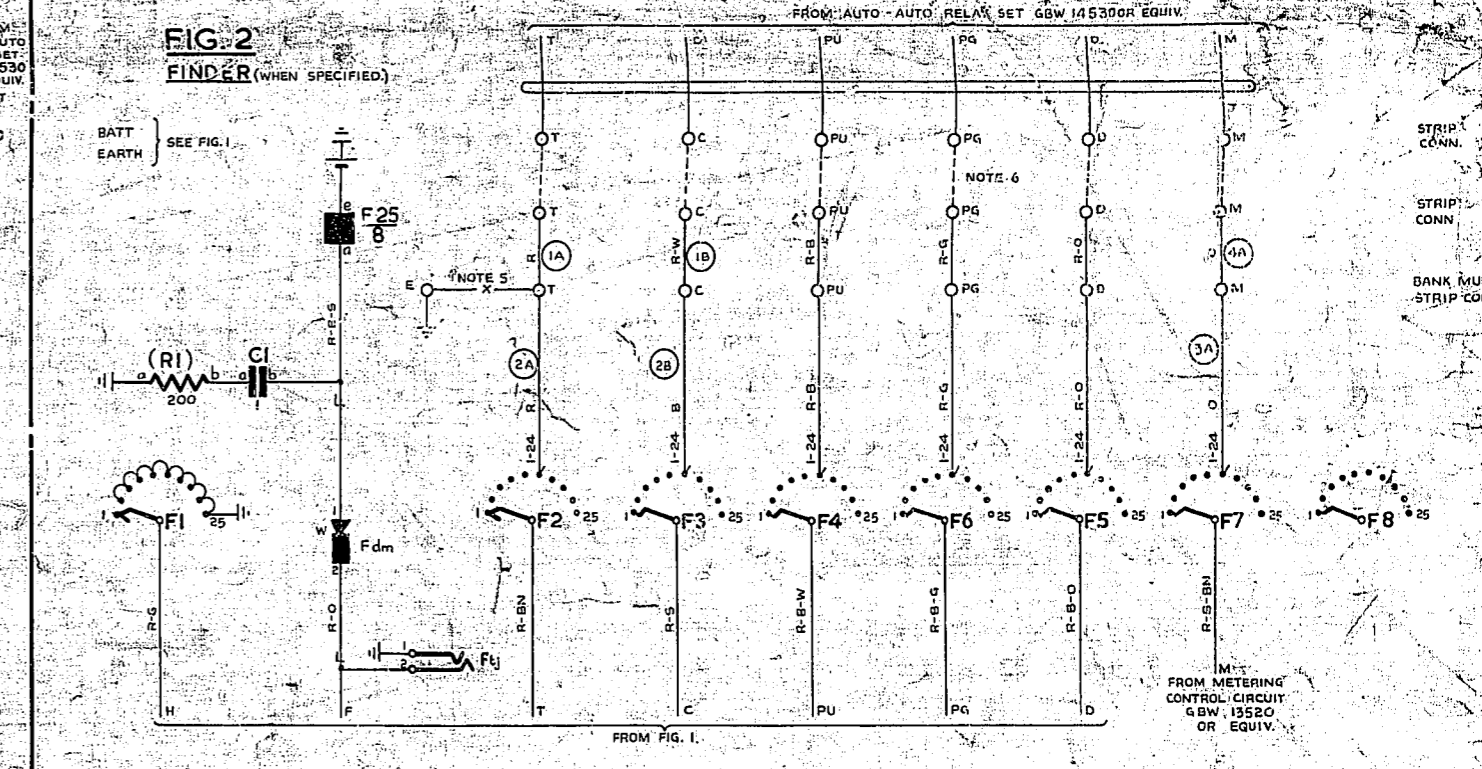
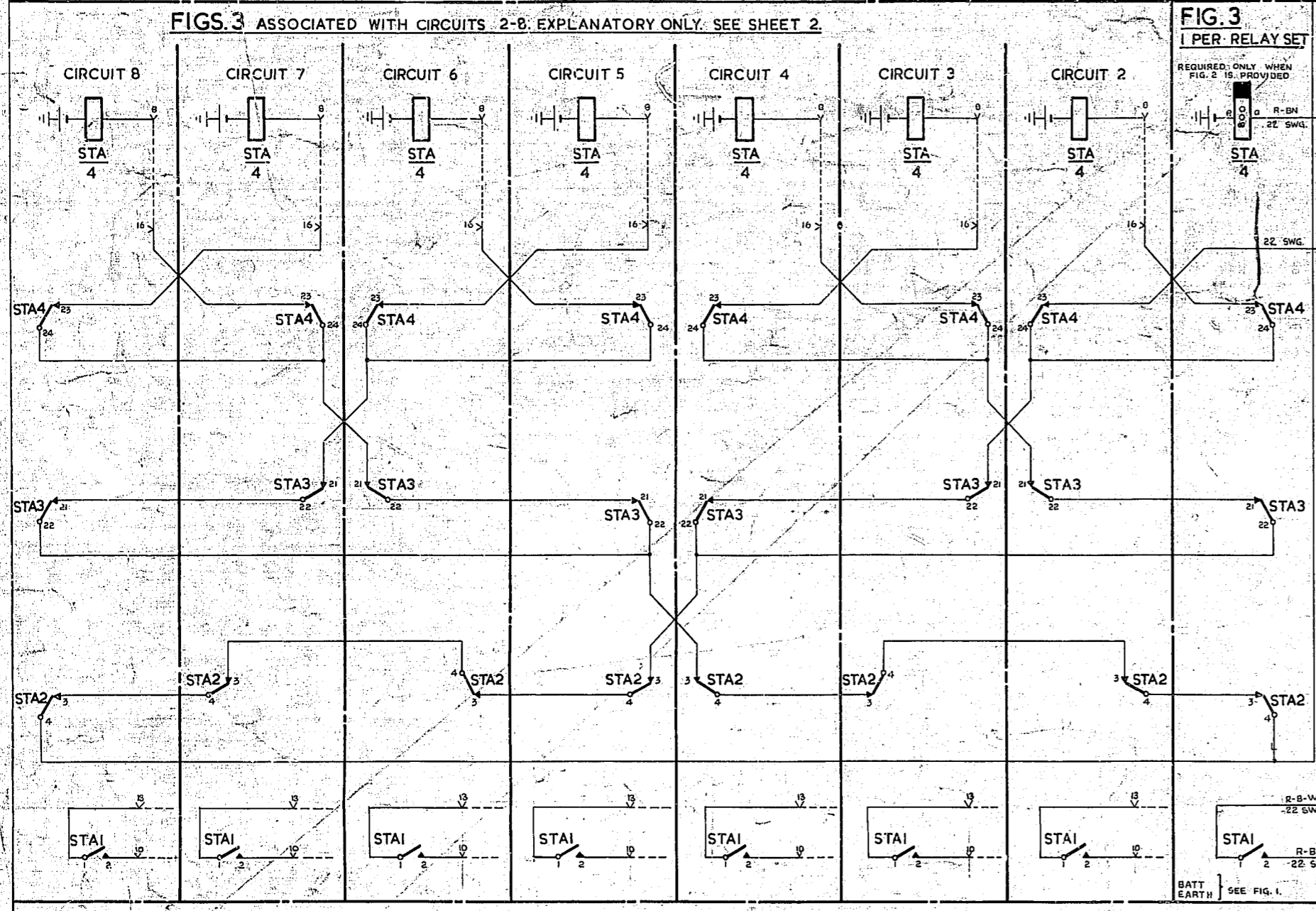


PART OF START-LEAD OVERFLOW & ROUTINE TEST CIRCUIT  
EXPLANATORY ONLY  
REQUIRED ONLY WHEN FIG. 2 IS PROVIDED.



- NOTES
1. FUSING 1-1.5A PER CIRCUIT.
  2. TAGS ASSOCIATED WITH UNISELECTOR OUTLETS TO BE STRAPPED TO TAGS AS FOLLOWS AS REQ'D: 20-2nd (DIGIT DISCRIMINATION) 40-3rd (DIGIT DISCRIMINATION) 10-1st (SINGLE FEE WITHOUT TIMED REPESSION) IF TO 4F-1-10 UNIT FEES WITH TIMED REPESSION WHEN REPEAT METERING EQUIPMENT IS PROVIDED) NM - NON-METERED.
  3. WHEN FIG. 2 IS NOT PROVIDED ADD STRAPS U18-U20 & U2-U4.
  4. FINDER OUTLETS 1-24 TO BE MULTIPLIED TO ALL FINDERS IN GROUP ASSOCIATED WITH SAME GROUP OF AUTO-AUTO RELAY SETS.
  5. STRAP TAG E TO ALL T TAGS, NOT JUMPERED TO AUTO-AUTO RELAY SETS.
  6. JUMPERING BETWEEN FINDER MULTIPLE & AUTO-AUTO RELAY SETS TO BE ARRANGED TO GIVE EVEN DISTRIBUTION OF TRAFFIC.
  7. WHEN FIG. 2 IS NOT PROVIDED ADD CONNECTIONS SHOWN IN FIG. 1 TO ASSOCIATED AUTO-AUTO RELAY SET. WHEN FIG. 2 IS PROVIDED, PROVIDE FIG. 3 ALSO & CONNECTIONS SHOWN THERE.
  8. WHEN REPEAT METERING EQUIPMENT IS NOT PROVIDED ADD STRAP U2-U5.
  9. JACK POINTS 9/11 TO MAKE CONTACT WHEN RELAY SET IS REMOVED.
  10. ALL WIRING TO BE 25 SWG UNLESS OTHERWISE SPECIFIED.
  11. Ø FOR WIRING SEE GBW 10640 OR EQUIV.

MULTI-FEE RELAY SET WITH OR WITHOUT FINDER FULL SERVICE WHITE EXCHANGE			
CONN. ASSOCIATED WITH ARC F8 FIG. 2 DELETED (6/6/72)	4	12-2-62	2/2
SP. RELAY WINDING DELETED (R164)	3	10-11-57	1/2
RELAY 67A CHANGED TO ADD (G5048)	2	6-11-56	1/2
(G5047)	1	8-6-55	1/2
AMENDMENT PARTICULARS	ISSUE DATE	APP'D	
N.Z.P.O.	DRAWN	CHECKED	WIRING
			CIRCUIT
			202

0  
5 Centimetres  
10  
15  
20  
25  
30

STA RELAY CONNECTIONS

NUMBER OF EQUIPPED CCTS.	CONNECT RELAY SPRINGS ON CCTS.								COLOUR
	1	2	3	4	5	6	7	8	
1	STA4 - U16								R-B-W
2	U16 STA23 STA4-24	STA23 U16 STA24							R-B-W R-B-W R-B-O
3	U16 STA23 STA24 STA21 STA4-22	STA23 U16 STA24 STA22 STA21	STA21						R-B-W R-B-W R-B-O R-B-G R-B-BN R-B-S
4	U16 STA23 STA24 STA21 STA4-22	STA23 U16 STA24 STA22 STA21	STA21						R-B-W R-B-W R-B-O R-B-G R-B-BN R-B-S R-B-W R-B-W R-B-G
5	U16 STA23 STA24 STA21 STA22 STA3 STA4	STA23 U16 STA24 STA22 STA4 STA21 STA3	STA21		STA22	STA3			R-B-W R-B-W R-B-O R-B-G R-B-BN R-O R-G R-B-S R-B R-B-W R-B-G R-O R-B
6	U16 STA23 STA24 STA21 STA22 STA3 STA4	STA23 U16 STA24 STA22 STA4 STA21 STA3	STA21		STA22	STA3		STA4	R-B-W R-B-W R-B-O R-B-G R-B-BN R-O R-G R-B-S R-B R-B-W R-B-W R-B-G R-O R-B
						STA22-24 U16 STA23 STA4	STA24 STA23 U16 STA3		R-B-O R-B-W R-B-W R-B-O R-B

STA RELAY CONNECTIONS

NUMBER OF EQUIPPED CCTS.	CONNECT RELAY SPRINGS ON CCTS.								COLOUR
	1	2	3	4	5	6	7	8	
7	U16 STA23 STA24 STA21 STA22 STA3 STA4	STA23 U16 STA24 STA22 STA4 STA21 STA3	STA21						R-B-W R-B-W R-B-O R-B-G R-B-BN R-O R-G R-B-S R-B R-B-W R-B-W R-B-G R-O R-B-O R-B-W R-B-W R-B-S R-B-G R-O R-B R-B-BN
8	U16 STA23 STA24 STA21 STA22 STA3 STA4	STA23 U16 STA24 STA22 STA4 STA21 STA3	STA21		STA22	STA3		STA4	R-B-W R-B-W R-B-O R-B-G R-B-BN R-O R-G R-B-S R-B R-B-W R-B-W R-B-G R-O R-B-O R-B-W R-B-W R-B-S R-B-G R-O R-B R-B-BN R-B-W R-B-W R-B-S R-B-G R-O R-B R-B-BN R-B-W R-B-W R-B-G R-O

				MULTI-FEE RELAY SET			
				WITH OR WITHOUT FINDER			
				FULL SATELLITE EXCHANGES			
NO CHANGE ISSUE ADVANCED ONLY (56721)		4	12-2-62				
NO CHANGE ISSUE ADVANCED ONLY (8164)		3	10-10-57				
NO CHANGE ISSUE ADVANCED ONLY (68096)		2	5-11-56				
		1	8-6-55				
AMENDMENT PARTICULARS			ISSUE DATE	APPD	SIZE: S 50' E		
N.Z.P.O.	DRAWN	CHECKED	WIRING	CIRCUIT	GBW 13510		
				SHEET 2-2			