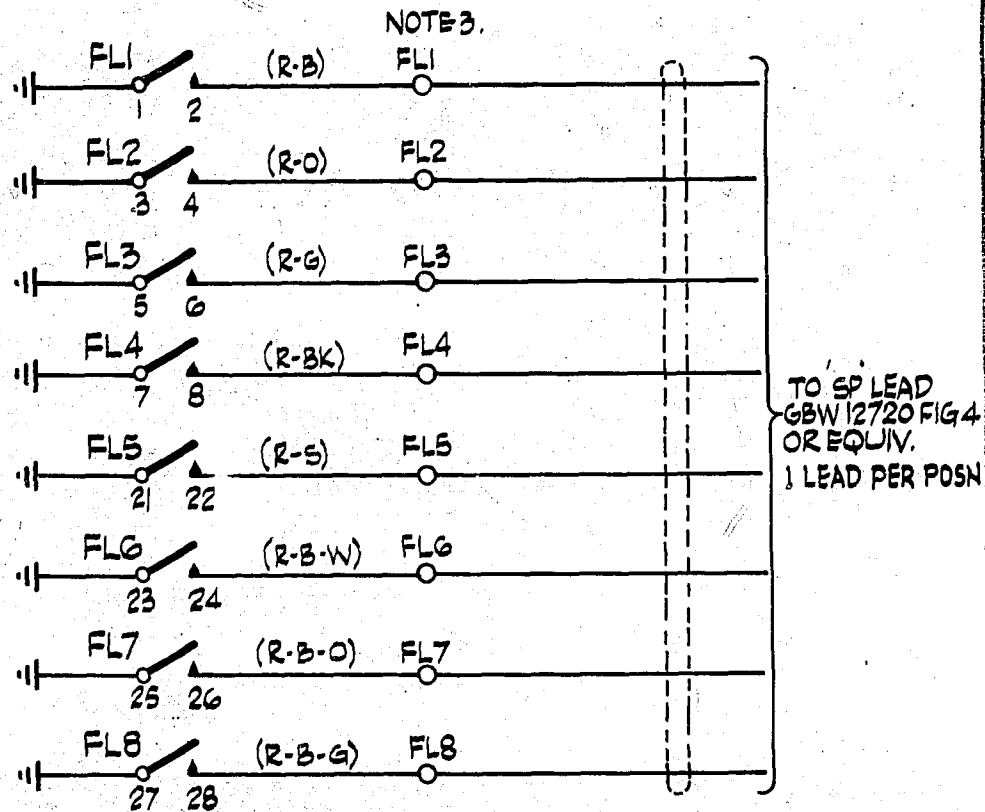
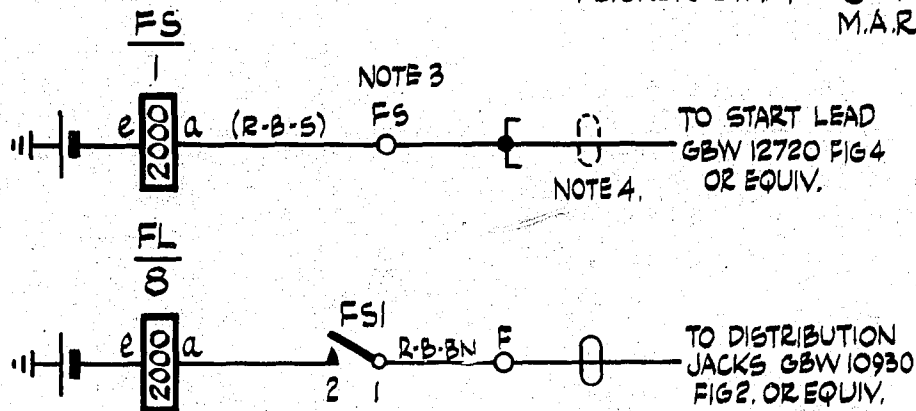
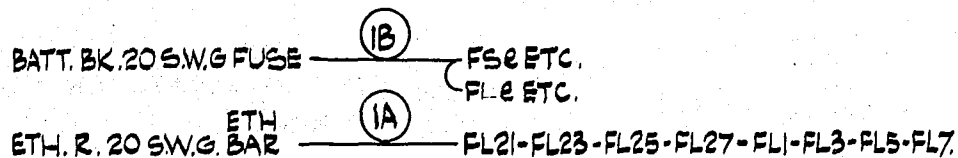


FLICKER START - 8 C.T.C. POSITIONS (MAX)  
M.A.R.



NOTES:-

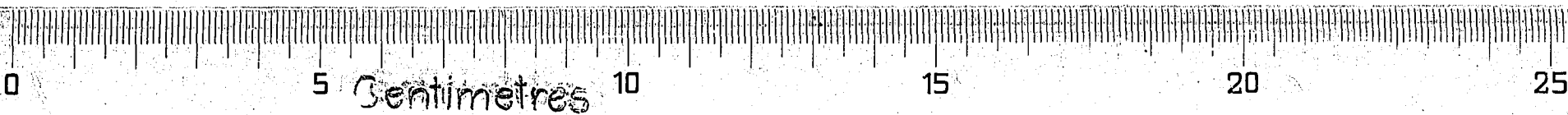
1. FUSE :- 1.5A PER 10 FL & FS RELAYS.
2. ALL WIRING TO BE 23 S.W.G. UNLESS OTHERWISE SPECIFIED. M.A.R. PLATE WIRING TO BE 23 OR 25 S.W.G.
3. WHEN GBW 13460 IS ON SAME M.A.R. AS GBW 12720 FIG 4. OR EQUIV. TAGS FL1 TO FL8 & FS ARE NOT REQUIRED.
4. A SEPARATE START LEAD TO BE PROVIDED FOR EACH GROUP OF 8 POSITIONS MAXIMUM.



SUPERSEDED BY GBW 16130.  
FOR NEW WORK.

DISTRIBUTION OF  
FLICKER EARTH,  
TRUNK & AUTO - MANUAL  
EXCHANGES

SLOW RELEASE  SLOW OPERATE



NZPO	DRAWN <i>K.S.V.</i>	CHECKED <i>1/1/62</i>	WIRING <i>1/1/62</i>	CIRCUIT	AMENDMENT PARTICULARS	ISSUE	DATE	Appd	REF	SIZE	BY	H
						1			553-20-11	F	50Y	
					SUPERSESSION NOTE ADDED. NOTE 3 REVISED	2.	31.1.62	KGA	GBW 13460			