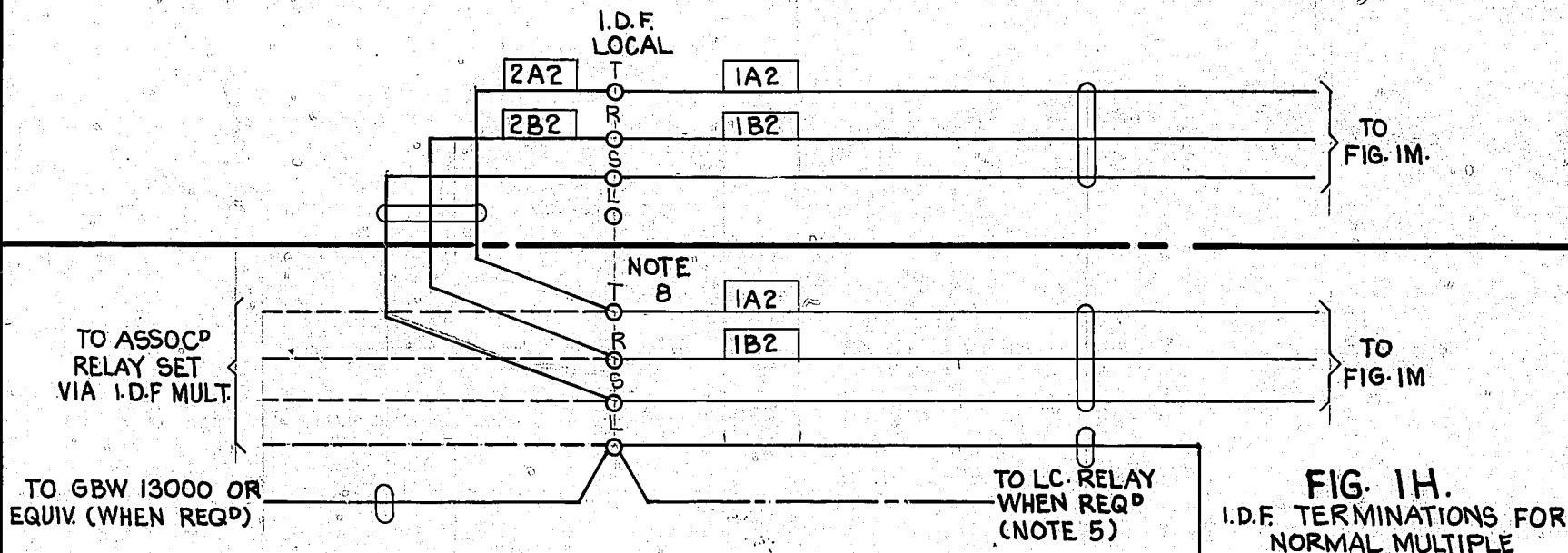
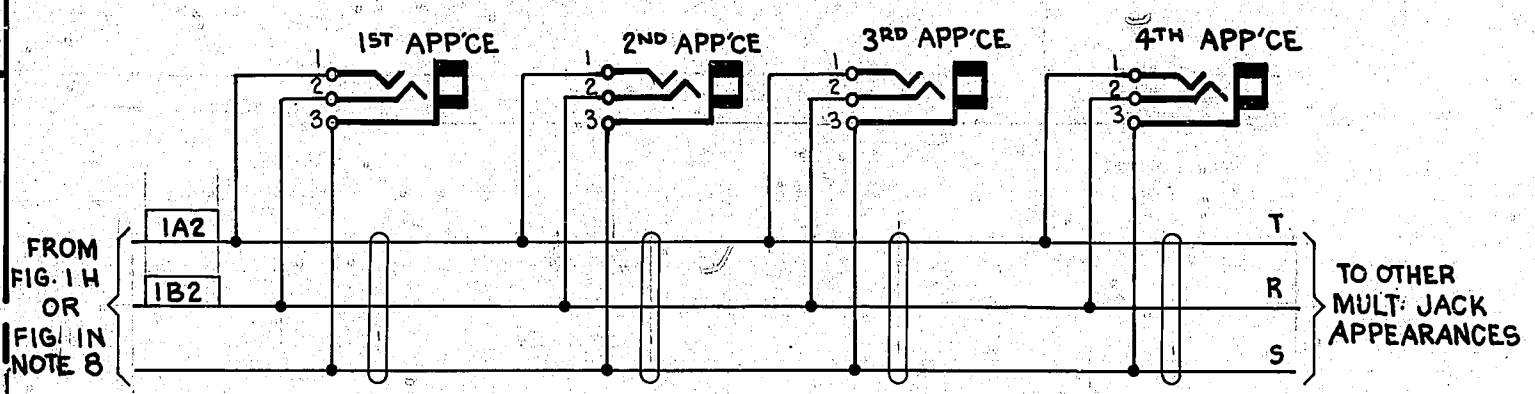


**FIG. IN** I.D.F. TERMINATIONS FOR CONVERSION OF 12 PANEL MULT. TO 6 PANEL WORKING OR 8 PANEL MULT. TO 4 PANEL WORKING



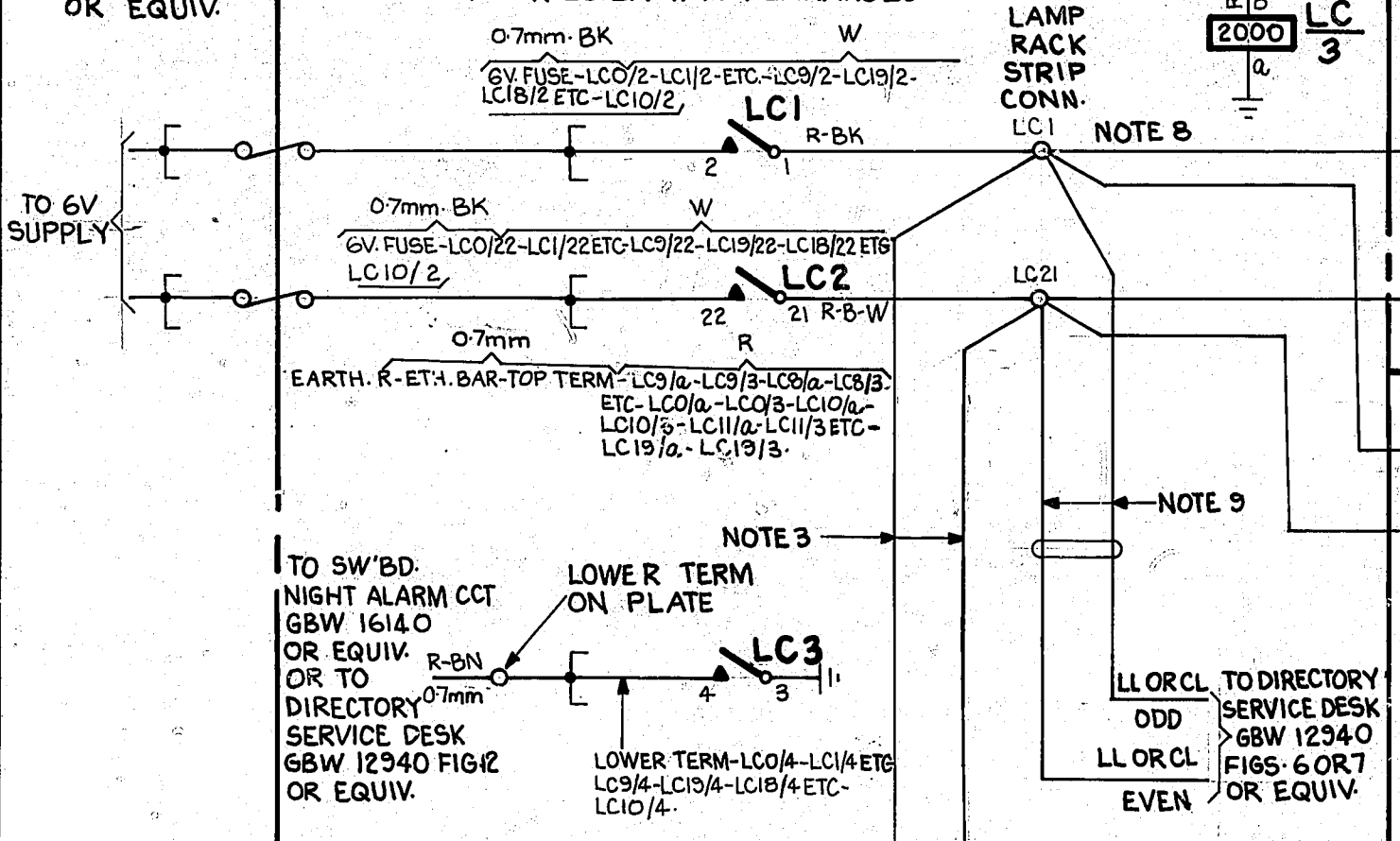
**FIG. IM** MULTIPLE JACKS



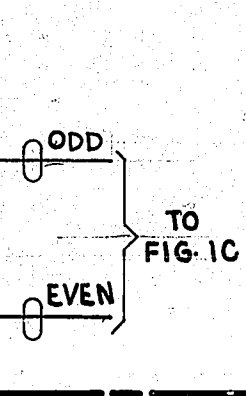
**FIG. IH** I.D.F. TERMINATIONS FOR NORMAL MULTIPLE

EXPLAN. ONLY REF. GBW 12870 OR EQUIV.

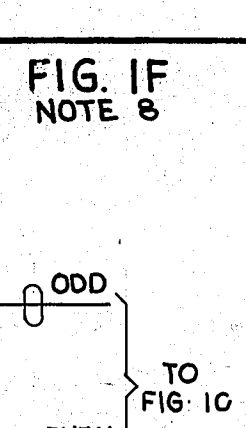
**FIG. IA** LAMP RELAY ASSOC'D WITH MAIN SW'BD POSN'S. 1 PER 20 LAMP APPEARANCES



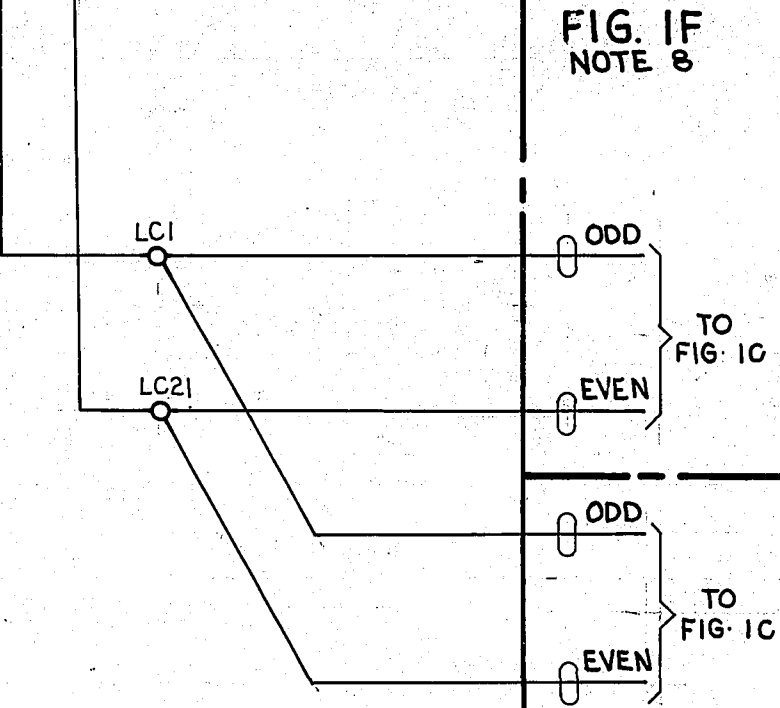
**FIG. ID** NOTE 8



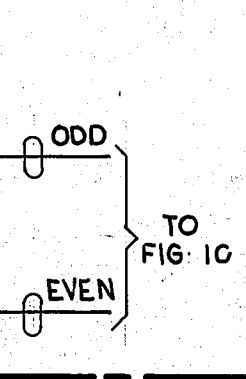
**FIG. IE** NOTE 8



**FIG. IB** LAMP RACK TERMINALS FOR CONVERSION OF 12 PANEL MULT. TO 6 PANEL WORKING OR 8 PANEL MULT. TO 4 PANEL WORKING.

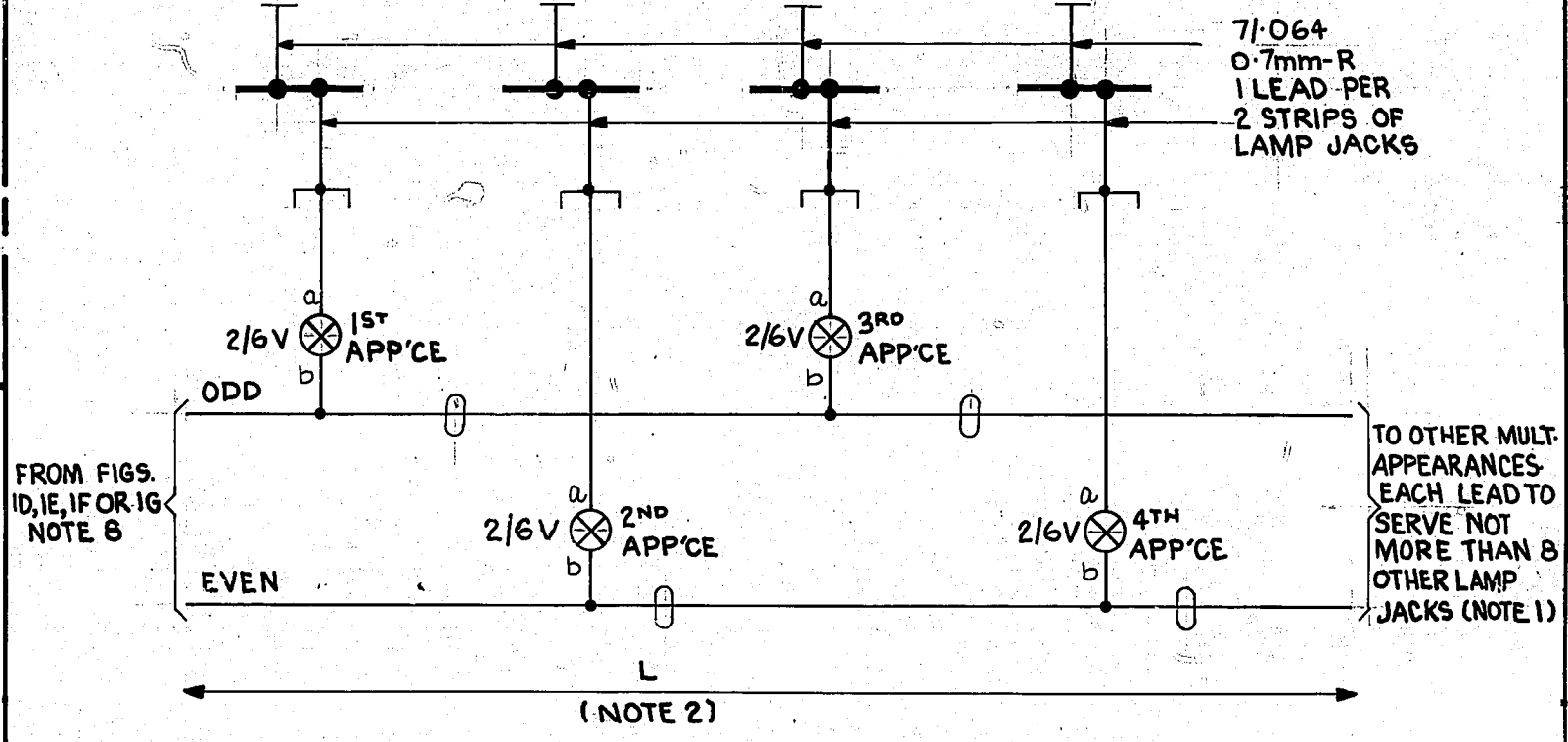


**FIG. IF** NOTE 8



**FIG. IG** NOTE 8

**FIG. IC** MULTIPLE LAMP



- 5. ADDITIONAL LC RELAY(S) TO BE CABLED TO 'L' TAG WHEN MORE THAN 20 LAMP JACK APPEARANCES ARE PROVIDED
- 6. UNLESS OTHERWISE SPECIFIED ALL WIRING TO BE 0.5mm.
- 7. FOR PLATE EARTH CONNECTIONS IN 25 B.T.C. WITH SLEEVING THE ORDER OF WIRING SHALL BE: TOP TERMINAL-LC9/3-LC8/3 ETC. TO LC0/3-LC0/a-LC1/a ETC TO LC9/a-LC19/a-LC18/a ETC TO LC10/a-LC10/3-LC11/3 ETC TO LC10/3.
- 8. IN SOME EXCHANGES THE MANUAL SW'BD. IS SITUATED IN A BLDG. REMOTE FROM THE AUTO EQUIP BLDGS. IN SUCH CASES THE CONNS. FROM I.D.F. LOCAL FIGS. IN & IH (AUTO BLDG) TO FIG. IM ARE MADE VIA A MANUAL ROOM FRAME (MANUAL BLDG) THE CONNS FROM FIGS. IA & IB TO FIGS. ID, IE, IF & IG ARE MADE VIA I.D.F. MULT AND/OR LOCAL (AUTO BLDG) AND A MANUAL ROOM FRAME (MANUAL BLDG)
- 9. THESE LEADS TO FEED 5 LAMPS MAXIMUM TO GBW 12940 FIG. 6.
- 10. WHEN A WALL MOUNTED FRAME IS PROVIDED FOR A SEPARATE SWITCHBOARD SUITE, THE CONNECTIONS FROM I.D.F. LOCAL FIGS. IN & IH TO FIG. IM AND FROM FIGS. IA & IB, TO FIGS. ID, IE, IF & IG ARE REQUIRED TO BE CABLED VIA THIS FRAME.

TYPE OF MULTIPLE	FIGURE NUMBERS REQUIRED	
	WHEN NOTE 2 PERMITS RATE OF PROVISION OF FIG. IC TO BE 1 PER FIG. IA OR IB.	WHEN NOTE 2 REQUIRES THAT RATE OF PROVISION OF FIG. IC SHALL BE MORE THAN 1 PER FIG. IA OR IB
NORMAL MULT. MAIN SW'BD. POSN'S	1H-1M IA-ID-1C	1H-1M IA-ID-1C IE-1C
12 OR 8 PANEL MULT. STRAPPED FOR 6 OR 4 PANEL WORKING MAIN SW'BD POSN'S (NOTES 3 & 4)	1N-1M 1H-1M IA-ID-1C IB-IF-1C	1N-1M 1H-1M IA-ID-1C IE-1C IF-1C IG-1C
8 OR 12 PANEL MULT. (WORKING 8 OR 12 PANEL BUT WITH FACILITIES FOR CONVERSION TO 4 OR 6 PANEL WORKING MAIN SW'BD. POSN'S)	1H-1M IA-ID-1C IA IB-IF-1C	1H-1M EXISTING IA-ID-1C EXISTING IA IB-IF-1C ADDITIONAL IG-1C ADDITIONAL

**NOTES:-**  
 1. LAMPS WILL BE INSERTED IN THE ANS. MULT. AT SELECTED APPEARANCES ARRANGED AS FAR AS POSSIBLE IN PAIRS TO DISTRIBUTE LOADS BETWEEN ODD & EVEN LEADS WHEN FIG. IE OR IG ARE PROVIDED THEY SHALL EACH SERVE A MINIMUM OF TWO LAMPS  
 2. 1' IS YDS OF CABLE BETWEEN LAMP RACK AND MIDPOINT OF LAMP MULTIPLE 'L' SHALL NOT EXCEED 1300 FOR A.C. WORKING DIVIDED BY THE ULTIMATE NUMBER OF LAMP JACKS (MAX 20) TO BE SERVED BY THE SAME PAIR OF LEADS, ADDITIONAL FIGS. IC SERVED BY FIGS. IE OR IG TO BE PROVIDED WHEN REQUIRED TO MEET THE FOREGOING AND FOR SEPARATE SUITES.  
 3. CONNECTIONS BETWEEN TAGS LC1 & LC21 IN FIGS. IA & IB TO BE 0.5mm B.T.C. IF TAGS ADJACENT OTHERWISE LOCAL WIRING SHALL BE USED.  
 4. TO CONVERT 6 PANEL TO 12 PANEL WORKING OR 4 PANEL TO 8 PANEL WORKING, REMOVE EXISTING CONNECTIONS BETWEEN TAGS LC1 & LC21 IN FIG. IA TO CORRESPONDING TAGS IN FIG. IB. PROVIDED CONNECTIONS FROM TAGS LC1 & LC21 (FIG. IB) TO CORRESPONDING TAGS IN FIG. IA ASSOC'D WITH L.C. RELAYS FOR ADDITIONAL CCTS. IF INTER-RACK CONNS. ARE REQUIRED THEY SHALL BE IN CABLE FORM OTHERWISE LOCAL WIRING SHALL BE USED. EXISTING CONNECTIONS BETWEEN FIGS. IH & IN TO BE REMOVED AND FIG. IN CONVERTED TO AN ADDITIONAL FIG. IH.

A	24-10-80	MK	17184		RETRACED FROM ISS-B 10-4-70
B	10-4-70				NOTE 10 ADDED
7	12-4-65		94808		FIG. IA - REFS ON LEADS TO NIGHT ALM & TO DIRECTORY SERV DESK MOD. NOTE 9 ADDED
6					FIGS. 1A, 1B, 1C, 1D, 1E, 1F, 1G, 1H, 1I, 1J, 1K, 1L, 1M, 1N, 1O, 1P, 1Q, 1R, 1S, 1T, 1U, 1V, 1W, 1X, 1Y, 1Z, 1AA, 1AB, 1AC, 1AD, 1AE, 1AF, 1AG, 1AH, 1AI, 1AJ, 1AK, 1AL, 1AM, 1AN, 1AO, 1AP, 1AQ, 1AR, 1AS, 1AT, 1AU, 1AV, 1AW, 1AX, 1AY, 1AZ, 1BA, 1BB, 1BC, 1BD, 1BE, 1BF, 1BG, 1BH, 1BI, 1BJ, 1BK, 1BL, 1BM, 1BN, 1BO, 1BP, 1BQ, 1BR, 1BS, 1BT, 1BU, 1BV, 1BW, 1BX, 1BY, 1BZ, 1CA, 1CB, 1CC, 1CD, 1CE, 1CF, 1CG, 1CH, 1CI, 1CJ, 1CK, 1CL, 1CM, 1CN, 1CO, 1CP, 1CQ, 1CR, 1CS, 1CT, 1CU, 1CV, 1CW, 1CX, 1CY, 1CZ, 1DA, 1DB, 1DC, 1DD, 1DE, 1DF, 1DG, 1DH, 1DI, 1DJ, 1DK, 1DL, 1DM, 1DN, 1DO, 1DP, 1DQ, 1DR, 1DS, 1DT, 1DU, 1DV, 1DW, 1DX, 1DY, 1DZ, 1EA, 1EB, 1EC, 1ED, 1EE, 1EF, 1EG, 1EH, 1EI, 1EJ, 1EK, 1EL, 1EM, 1EN, 1EO, 1EP, 1EQ, 1ER, 1ES, 1ET, 1EU, 1EV, 1EW, 1EX, 1EY, 1EZ, 1FA, 1FB, 1FC, 1FD, 1FE, 1FF, 1FG, 1FH, 1FI, 1FJ, 1FK, 1FL, 1FM, 1FN, 1FO, 1FP, 1FQ, 1FR, 1FS, 1FT, 1FU, 1FV, 1FW, 1FX, 1FY, 1FZ, 1GA, 1GB, 1GC, 1GD, 1GE, 1GF, 1GG, 1GH, 1GI, 1GJ, 1GK, 1GL, 1GM, 1GN, 1GO, 1GP, 1GQ, 1GR, 1GS, 1GT, 1GU, 1GV, 1GW, 1GX, 1GY, 1GZ, 1HA, 1HB, 1HC, 1HD, 1HE, 1HF, 1HG, 1HH, 1HI, 1HJ, 1HK, 1HL, 1HM, 1HN, 1HO, 1HP, 1HQ, 1HR, 1HS, 1HT, 1HU, 1HV, 1HW, 1HX, 1HY, 1HZ, 1IA, 1IB, 1IC, 1ID, 1IE, 1IF, 1IG, 1IH, 1II, 1IJ, 1IK, 1IL, 1IM, 1IN, 1IO, 1IP, 1IQ, 1IR, 1IS, 1IT, 1IU, 1IV, 1IW, 1IX, 1IY, 1IZ, 1JA, 1JB, 1JC, 1JD, 1JE, 1JF, 1JG, 1JH, 1JI, 1JJ, 1JK, 1JL, 1JM, 1JN, 1JO, 1JP, 1JQ, 1JR, 1JS, 1JT, 1JU, 1JV, 1JW, 1JX, 1JY, 1JZ, 1KA, 1KB, 1KC, 1KD, 1KE, 1KF, 1KG, 1KH, 1KI, 1KJ, 1KK, 1KL, 1KM, 1KN, 1KO, 1KP, 1KQ, 1KR, 1KS, 1KT, 1KU, 1KV, 1KW, 1KX, 1KY, 1KZ, 1LA, 1LB, 1LC, 1LD, 1LE, 1LF, 1LG, 1LH, 1LI, 1LJ, 1LK, 1LL, 1LM, 1LN, 1LO, 1LP, 1LQ, 1LR, 1LS, 1LT, 1LU, 1LV, 1LW, 1LX, 1LY, 1LZ, 1MA, 1MB, 1MC, 1MD, 1ME, 1MF, 1MG, 1MH, 1MI, 1MJ, 1MK, 1ML, 1MM, 1MN, 1MO, 1MP, 1MQ, 1MR, 1MS, 1MT, 1MU, 1MV, 1MW, 1MX, 1MY, 1MZ, 1NA, 1NB, 1NC, 1ND, 1NE, 1NF, 1NG, 1NH, 1NI, 1NJ, 1NK, 1NL, 1NM, 1NN, 1NO, 1NP, 1NQ, 1NR, 1NS, 1NT, 1NU, 1NV, 1NW, 1NX, 1NY, 1NZ, 1OA, 1OB, 1OC, 1OD, 1OE, 1OF, 1OG, 1OH, 1OI, 1OJ, 1OK, 1OL, 1OM, 1ON, 1OO, 1OP, 1OQ, 1OR, 1OS, 1OT, 1OU, 1OV, 1OW, 1OX, 1OY, 1OZ, 1PA, 1PB, 1PC, 1PD, 1PE, 1PF, 1PG, 1PH, 1PI, 1PJ, 1PK, 1PL, 1PM, 1PN, 1PO, 1PP, 1PQ, 1PR, 1PS, 1PT, 1PU, 1PV, 1PW, 1PX, 1PY, 1PZ, 1QA, 1QB, 1QC, 1QD, 1QE, 1QF, 1QG, 1QH, 1QI, 1QJ, 1QK, 1QL, 1QM, 1QN, 1QO, 1QP, 1QQ, 1QR, 1QS, 1QT, 1QU, 1QV, 1QW, 1QX, 1QY, 1QZ, 1RA, 1RB, 1RC, 1RD, 1RE, 1RF, 1RG, 1RH, 1RI, 1RJ, 1RK, 1RL, 1RM, 1RN, 1RO, 1RP, 1RQ, 1RR, 1RS, 1RT, 1RU, 1RV, 1RW, 1RX, 1RY, 1RZ, 1SA, 1SB, 1SC, 1SD, 1SE, 1SF, 1SG, 1SH, 1SI, 1SJ, 1SK, 1SL, 1SM, 1SN, 1SO, 1SP, 1SQ, 1SR, 1SS, 1ST, 1SU, 1SV, 1SW, 1SX, 1SY, 1SZ, 1TA, 1TB, 1TC, 1TD, 1TE, 1TF, 1TG, 1TH, 1TI, 1TJ, 1TK, 1TL, 1TM, 1TN, 1TO, 1TP, 1TQ, 1TR, 1TS, 1TT, 1TU, 1TV, 1TW, 1TX, 1TY, 1TZ, 1UA, 1UB, 1UC, 1UD, 1UE, 1UF, 1UG, 1UH, 1UI, 1UJ, 1UK, 1UL, 1UM, 1UN, 1UO, 1UP, 1UQ, 1UR, 1US, 1UT, 1UU, 1UV, 1UW, 1UX, 1UY, 1UZ, 1VA, 1VB, 1VC, 1VD, 1VE, 1VF, 1VG, 1VH, 1VI, 1VJ, 1VK, 1VL, 1VM, 1VN, 1VO, 1VP, 1VQ, 1VR, 1VS, 1VT, 1VU, 1VV, 1VW, 1VX, 1VY, 1VZ, 1WA, 1WB, 1WC, 1WD, 1WE, 1WF, 1WG, 1WH, 1WI, 1WJ, 1WK, 1WL, 1WM, 1WN, 1WO, 1WP, 1WQ, 1WR, 1WS, 1WT, 1WU, 1WV, 1WW, 1WX, 1WY, 1WZ, 1XA, 1XB, 1XC, 1XD, 1XE, 1XF, 1XG, 1XH, 1XI, 1XJ, 1XK, 1XL, 1XM, 1XN, 1XO, 1XP, 1XQ, 1XR, 1XS, 1XT, 1XU, 1XV, 1XW, 1XX, 1XY, 1XZ, 1YA, 1YB, 1YC, 1YD, 1YE, 1YF, 1YG, 1YH, 1YI, 1YJ, 1YK, 1YL, 1YM, 1YN, 1YO, 1YP, 1YQ, 1YR, 1YS, 1YT, 1YU, 1YV, 1YW, 1YX, 1YY, 1YZ, 1ZA, 1ZB, 1ZC, 1ZD, 1ZE, 1ZF, 1ZG, 1ZH, 1ZI, 1ZJ, 1ZK, 1ZL, 1ZM, 1ZN, 1ZO, 1ZP, 1ZQ, 1ZR, 1ZS, 1ZT, 1ZU, 1ZV, 1ZW, 1ZX, 1ZY, 1ZZ

PROOF

**MULTIPLE ANSWERING JACKS 2000 TYPE**

DRN: T-EQPT	CKD	ORIGIN: T-EQPT
TCD: M-K	APPD	STANDARD: ATW 22001
NZPO ENGINEER-IN-CHIEF, WELLINGTON		
SHT   OF	GRW 12790	
SIZE A2		

