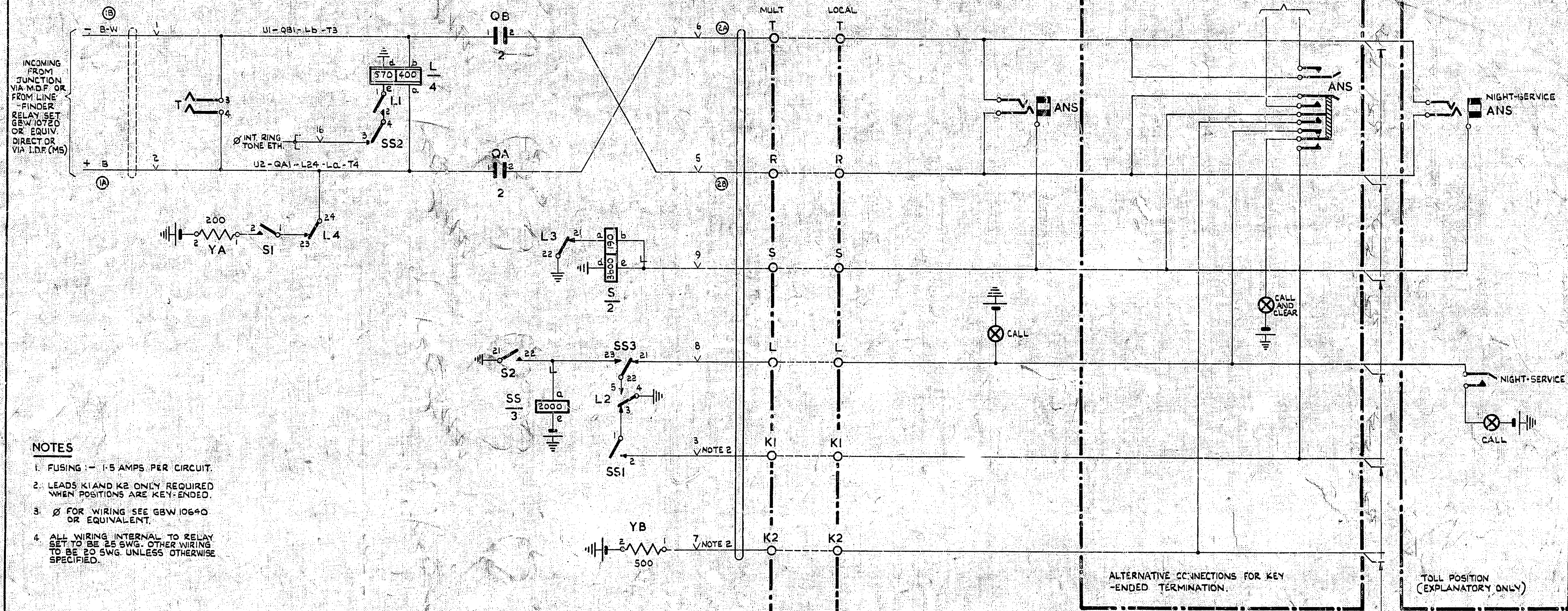


MANUAL BOARD (EXPLANATORY ONLY)

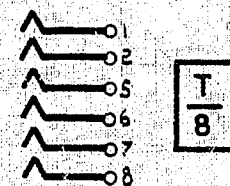
POSITION No 1



NOTES

1. FUSING :- 1.5 AMPS PER CIRCUIT.
2. LEADS K1 AND K2 ONLY REQUIRED WHEN POSITIONS ARE KEY-ENDED.
3. Ø FOR WIRING SEE GBW 10640 OR EQUIVALENT.
4. ALL WIRING INTERNAL TO RELAY SET TO BE 25 SWG. OTHER WIRING TO BE 20 SWG. UNLESS OTHERWISE SPECIFIED.

BATT. WHITE U12-SS2-YA2-YB2
 ETH. R U11-S21-Sd-L22-Ld-L4



				CHANGED NUMBER TERMINATING RELAY SET. HAMILTON TOLL EXCHANGE SLEEVE CONTROL MANUAL BOARD 2000 TYPE EQUIPMENT	
				(1443)	5.5.52
AMENDMENT PARTICULARS		ISSUE DATE	APP.	SIZE	M 50V S
N.Z.P.O.		DRAWN M.A.W.	CHECKED F.J.O.	WIRING	CIRCUIT
				GBW 12060	

Centimetres

10

15

20

25

30