

FIG. 1
FUSE ALARM

FIG. 2
BATTERY JACKS

FIG. 3B
1 PER RACK

FIG. 3
RELEASE ALARM EARTH
(PERIOD OF DELAY 9 SECS)

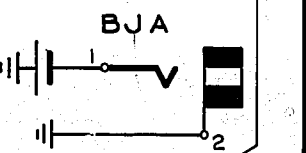
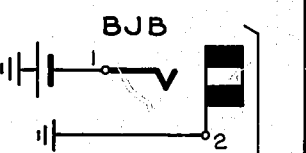
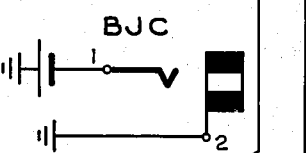
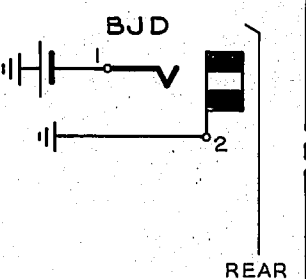


FIG. 2A
1 PER RACK

BATT (BK) U12 etc { BJA1 - BJB1
BJC1 - BJD1
LPA2

ETH (R) U11 etc { BJA2 - BJB2
BJC2 - BJD2
RAa - RAD

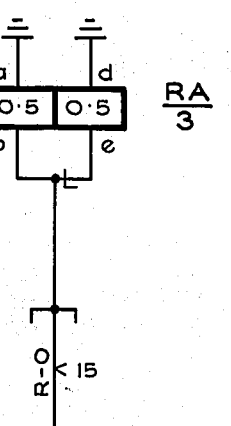
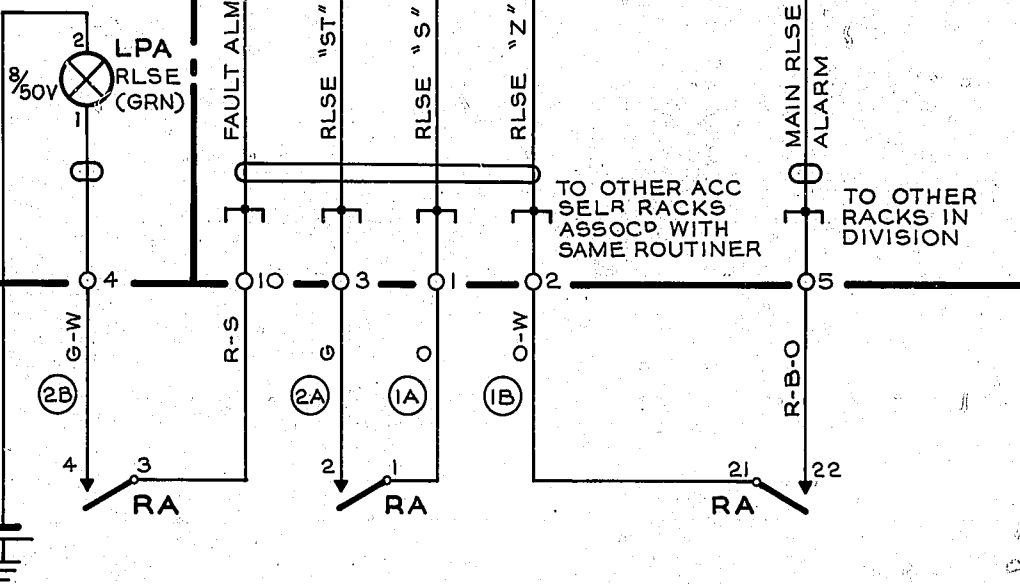


FIG. 3A
1 PER RACK

GBW 11560 FIG.1A REFERS

- NOTES**
- EXCEPT WHERE OTHERWISE STATED, ALL WIRING BEARING A COLOUR CODE TO BE 20 SWG.
 - UNLESS OTHERWISE SPECIFIED, TAGS ARE ON RACK MISC STRIP CONNECTION.

<input type="checkbox"/>	SLOW RELEASE	<input checked="" type="checkbox"/>	SLOW OPERATE
COMMON SERVICES RACK WIRING AUTO ROUTINER ACCESS SELR RACK TYPE 2000			
NOTE REF TO COMMONS FIG. 3 CORRECTED (69729)	2	23-12-63	D.B.H.
(11616)	1	16-6-52	C.W.H.
AMENDMENT PARTICULARS	ISSUE	DATE	APPD
			SIZE S 50V C
NZPO	DRAWN	CHECKED	WIRING CIRCUIT
GBW 11530			