

FIG. 1 TEST POSITION

1 PER POSITION PER ASSOCIATED TEST SELR.

BATT BK TAG. 12-YA2-YB2-YC2.
EARTH R POSN. ETH-KS22-KR2-KPC2-KPC22-KHTS
(TERM-17 LAST POSN. ONLY)

FIG. 3 RURAL LINE TEST CIRCUIT

1 PER POSITION PER ASSOCIATED TEST SELR. WHEN SPECIFIED.

NOTE 8

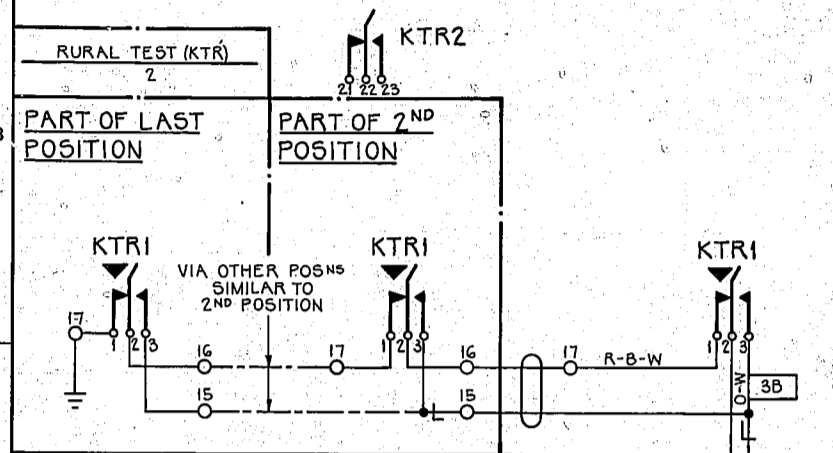
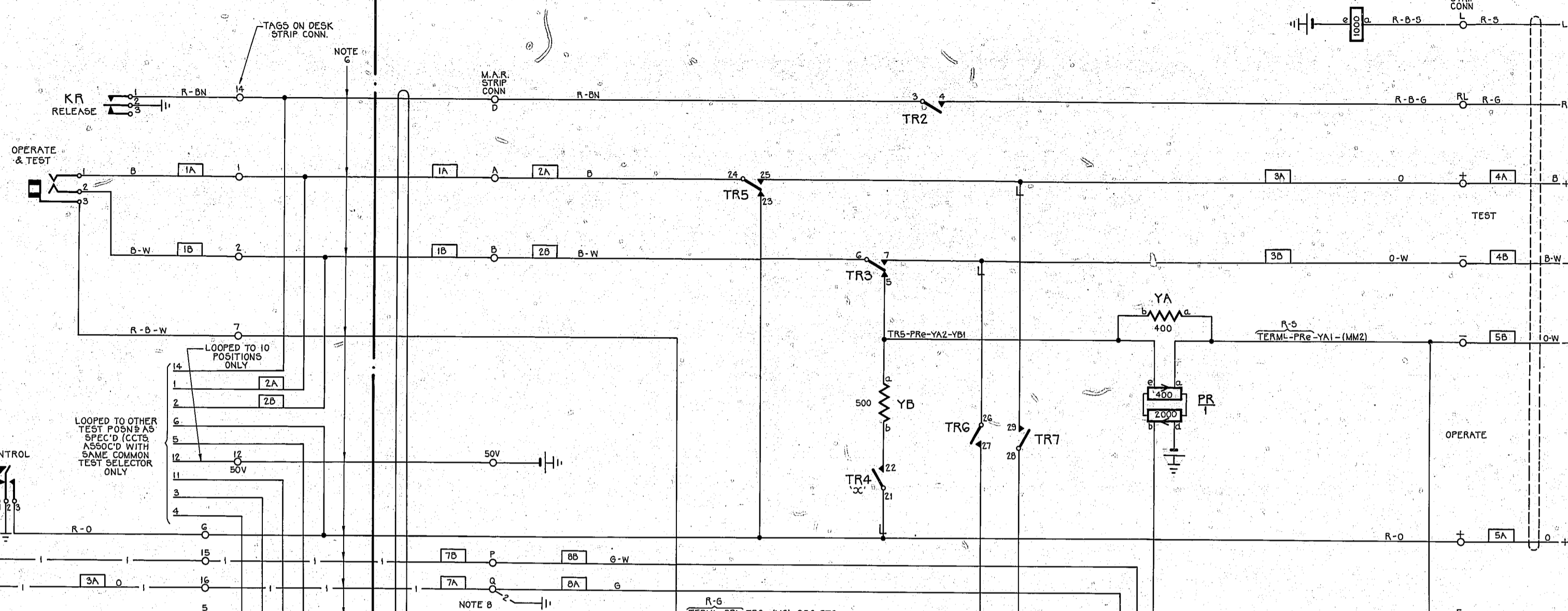


FIG. 2A M.A.R.

1 PER TEST SELECTOR



TO TEST SELECTOR DIRECT OR VIA 100V LOCAL (WHEN SPECIFIED) OR TO SWITCHING CONTROL CIRCUIT OR TO JUNC. TO REMOTE EXCH. VIA MISC. M.D.F. PROTECTORS DIRECT OR VIA 100V LOCAL (WHEN SPECIFIED)

FIG. 2C

1 PER EXCLUSIVE TEST SELECTOR AND 1 PER POSN PER COMMON TEST SELECTOR

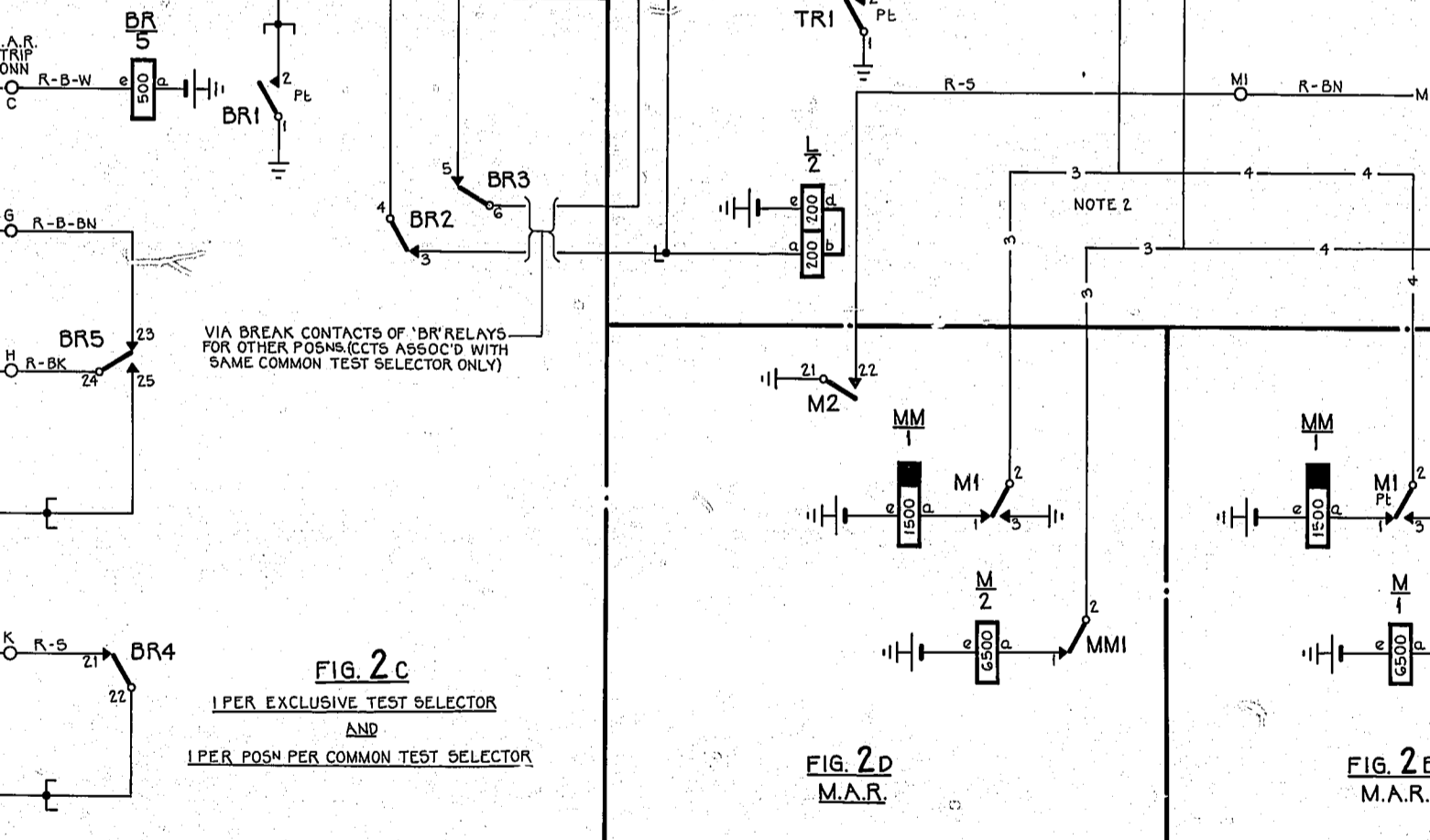


FIG. 2D M.A.R.

1 PER EXCLUSIVE TEST SELECTOR AND 1 PER POSN PER COMMON TEST SELECTOR

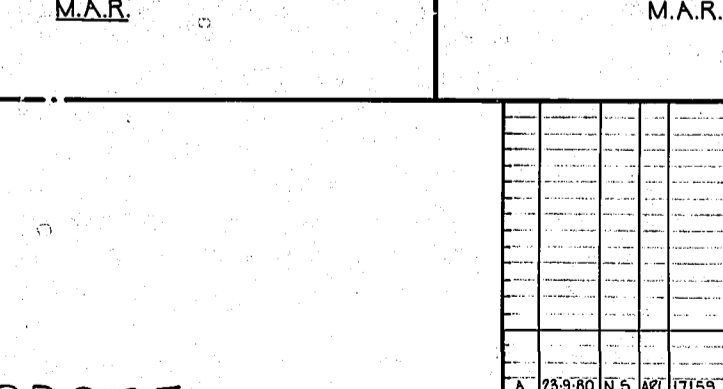
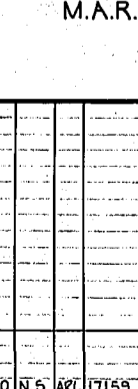


FIG. 2B M.A.R.

1 PER EXCLUSIVE TEST SELECTOR AND 1 PER POSN PER COMMON TEST SELECTOR

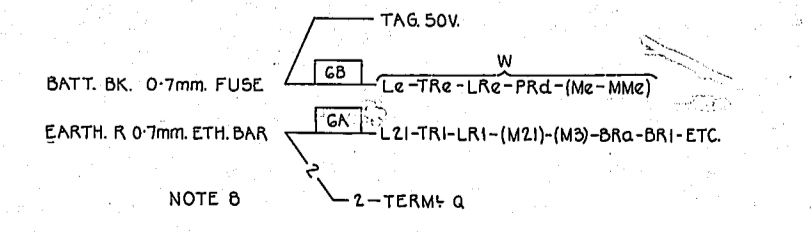


NOTES

- FUSING-1.5A PER 10 POSITION PER DISTRIBUTOR CIRCUIT.
- WHEN TEST SELECTOR IS AT REMOTE EXCHANGE SPECIFY FIG. 2B. IF LOCAL SWITCHING CONTROL CIRCUIT IS TO GBW 10470 OR GBW 15320 FIG. 1 OR IF GBW 15320 FIG. 3 IS SPECIFIED SPECIFY FIG. 2D. IF LOCAL SWITCHING CONTROL CIRCUIT IS TO GBW 15320 FIG. 2.
- LEAD 'E' IS REQUIRED ONLY WHEN CCT. IS CONNECTED TO LOCAL SWITCHING CONTROL CCT. OR IF GBW 15320 FIG. 3 IS SPECIFIED.
- ALL WIRING TO BE 0.5mm. UNLESS OTHERWISE SPECIFIED.
- Ø FOR WIRING SEE GBW 10690 OR EQUIV.
- WHEN TEST DESK IS LOCATED REMOTE FROM AUTO EQUIPMENT THESE LEADS MAY BE CABLED VIA THE M.D.F.
- AT SOME EARLY EXCHANGE, RESISTORS YA, YB, YC, FIG. 1 WERE 1200 OHMS.

WHEN RURAL LINE TEST FACILITIES ARE SPECIFIED PROVIDE FIG. 3 & CONNECTIONS SHOWN - 1 - AND OMIT CONNECTION SHOWN - 2 -

KR	PRIVATE CONTROL (KPC)	HOLD & TEST (KHT)	RELEASE (KR)	STEP (KS)
23 22 21	2	4	2	2



PROOF

SUPERSEDED BY GBW 11431

ISS	DATE	DEL	DC	ORDER	CKD	APD	CHANGE
DRN:	5-9	SECT.	CKD	ORIGIN:	5-5	SECT.	
TCD:	N.5.	APPD		STANDARD:	ATW 22001		
NZPO	ENGINEER	CHIEF		WELLINGTON			
SHT							
SIZE	A1						

GBW 11430

UD 237

