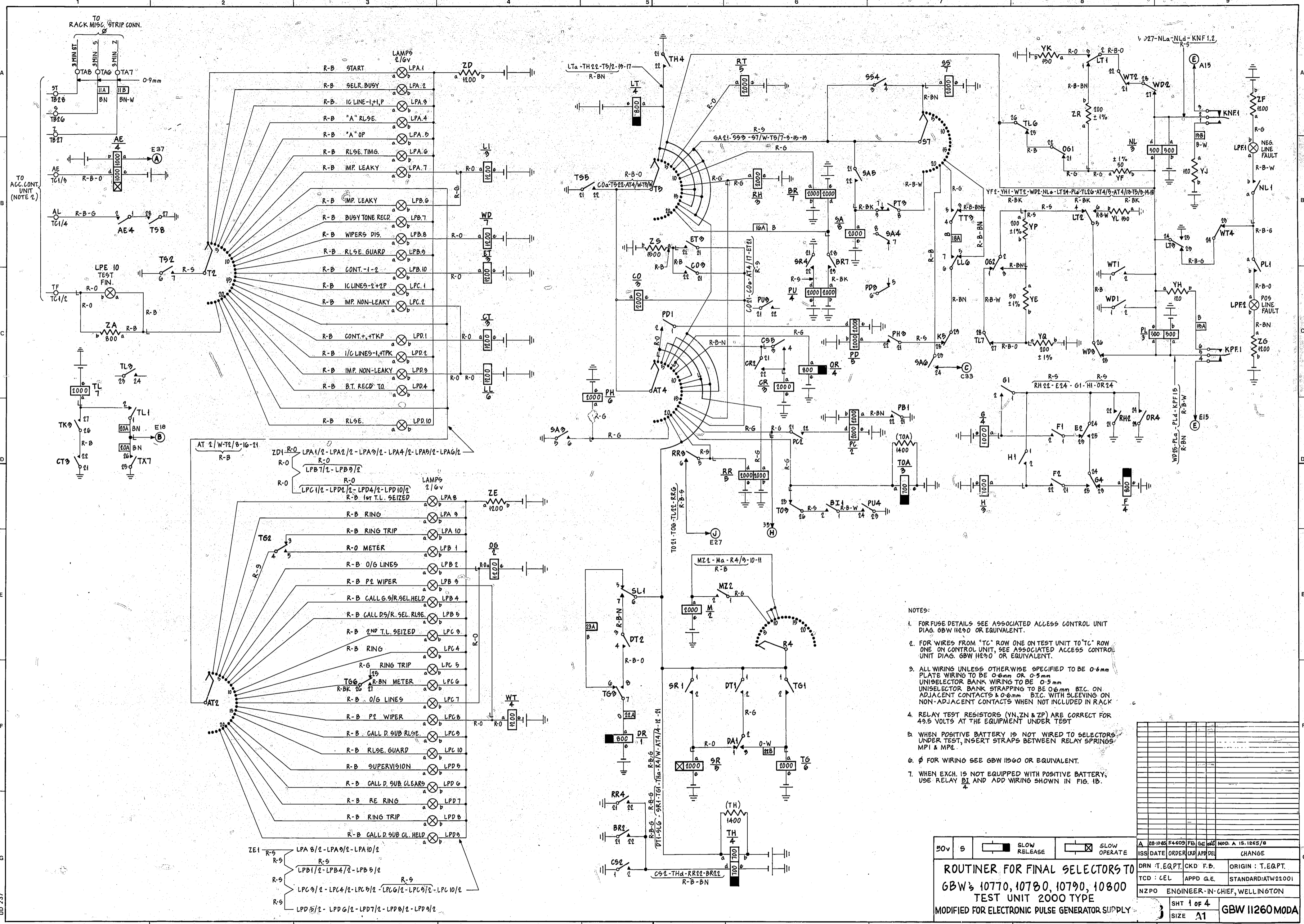


SCENTIMETRE

0
5
10
15
20
25
30
35
40
45
50
55



- NOTES:
- FOR FUSE DETAILS SEE ASSOCIATED ACCESS CONTROL UNIT DIAG. GBW 11260 OR EQUIVALENT.
 - FOR WIRES FROM "TC" ROW ONE ON TEST UNIT TO "TC" ROW ONE ON CONTROL UNIT, SEE ASSOCIATED ACCESS CONTROL UNIT DIAG. GBW 11260 OR EQUIVALENT.
 - ALL WIRING UNLESS OTHERWISE SPECIFIED TO BE 0.6mm PLATE WIRING TO BE 0.6mm OR 0.5mm UNISELECTOR BANK WIRING TO BE 0.5mm UNISELECTOR BANK STRAPPING TO BE 0.6mm B.T.C. ON ADJACENT CONTACTS & 0.6mm B.T.C. WITH SLEEVING ON NON-ADJACENT CONTACTS WHEN NOT INCLUDED IN RACK
 - RELAY TEST RESISTORS (VN, ZN & ZP) ARE CORRECT FOR 49.5 VOLTS AT THE EQUIPMENT UNDER TEST
 - WHEN POSITIVE BATTERY IS NOT WIRED TO SELECTORS UNDER TEST, INSERT STRAPS BETWEEN RELAY SPRINGS. MPI & MP2.
 - Ø FOR WIRING SEE GBW 11260 OR EQUIVALENT.
 - WHEN EXCH. IS NOT EQUIPPED WITH POSITIVE BATTERY, USE RELAY B1 AND ADD WIRING SHOWN IN FIG. 1B.

50V	S		
ROUTINER FOR FINAL SELECTORS TO			
GBW 10770, 10780, 10790, 10800			
TEST UNIT 2000 TYPE			
MODIFIED FOR ELECTRONIC PULSE GENERATOR SUPPLY			
ISS DATE ORDER (K) APP'D		CHANGE	
DRN T.E.Q.P.T. CKD F.P.		ORIGIN: T.E.Q.P.T.	
TCD: CEL APPD G.E.		STANDARD: ATW21001	
NZPO ENGINEER-IN-CHIEF, WELLINGTON		SHT 1 OF 4	
SIZE A1		GBW 11260 MODA	

5 CENTIMETRE

15

20

25

30

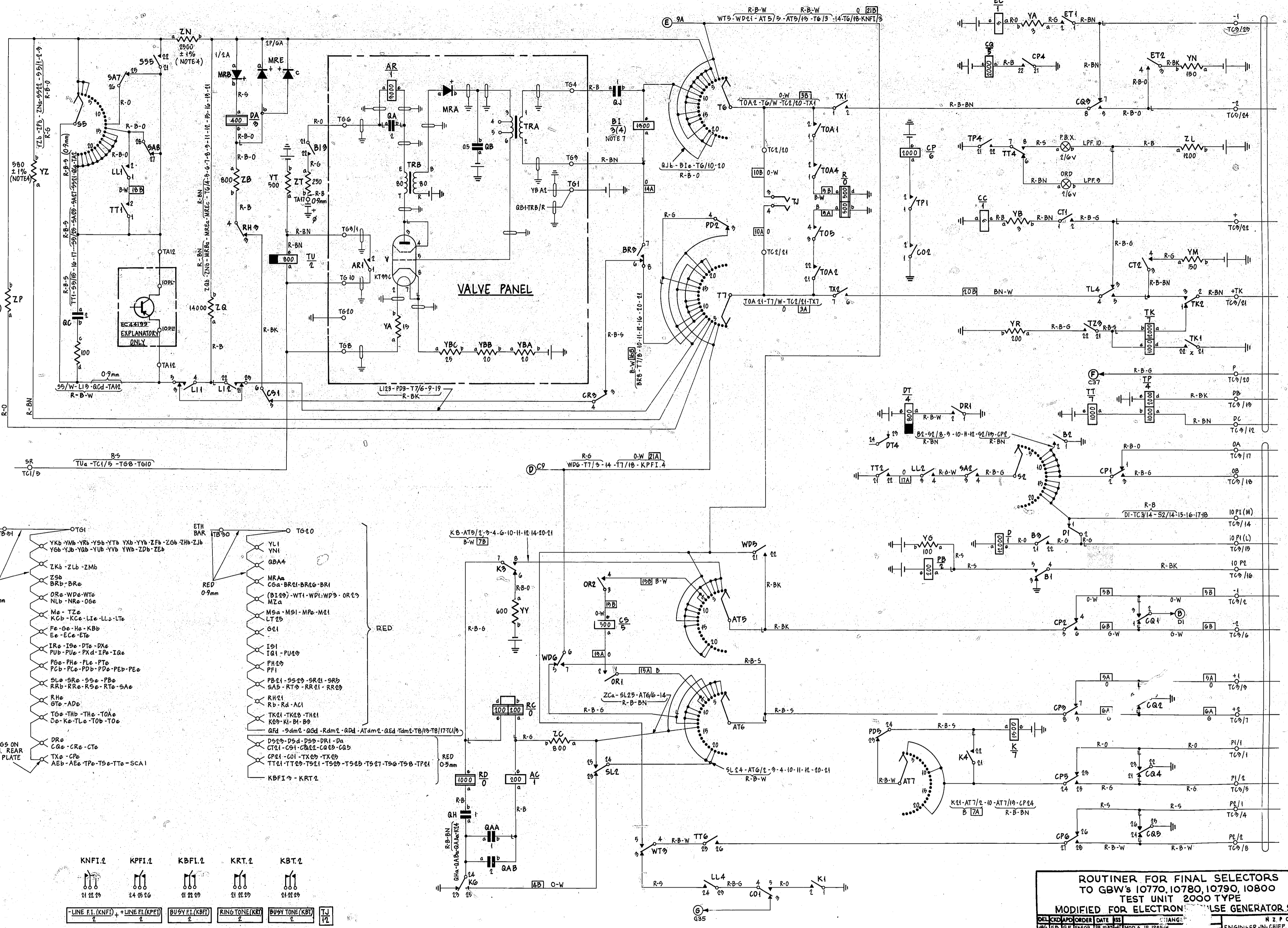
35

40

45

50

55

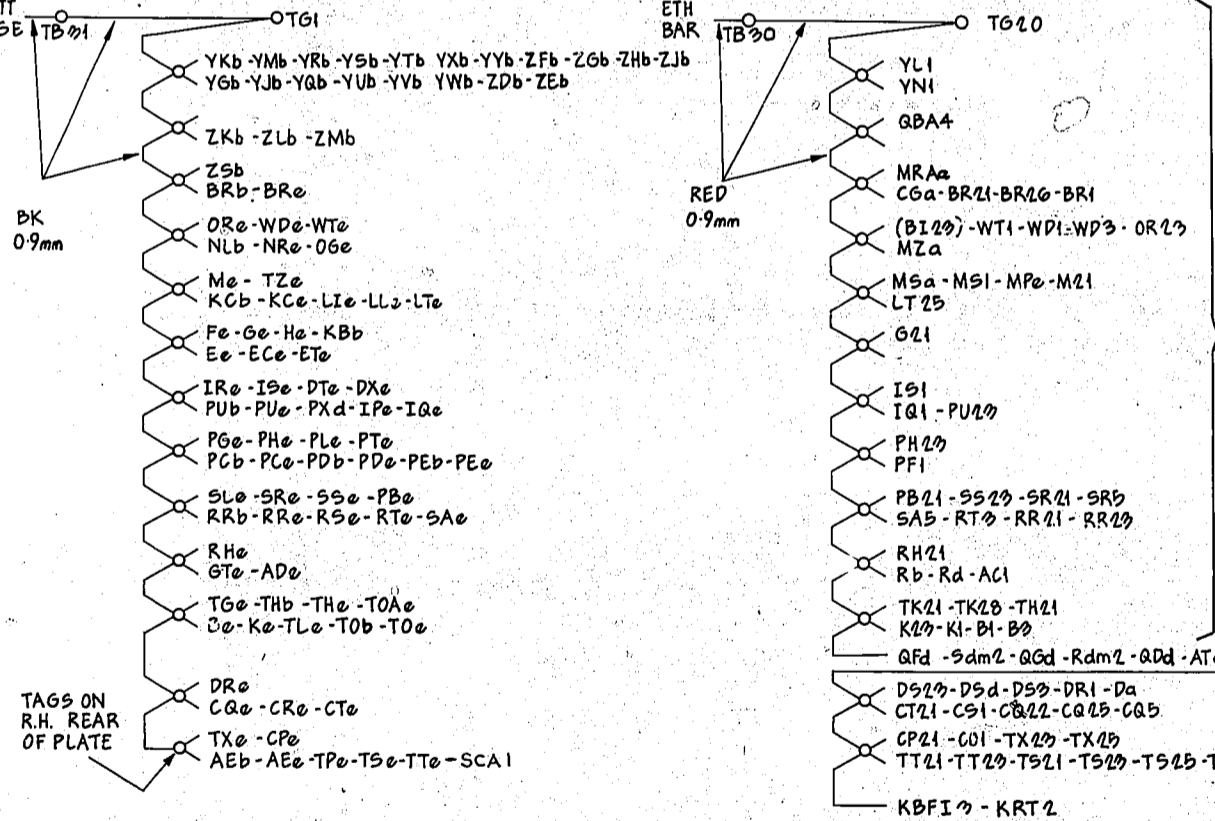
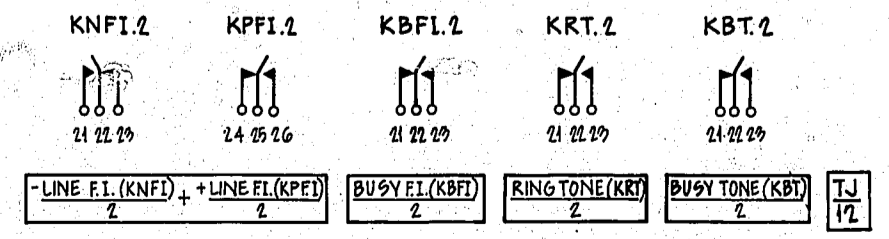


VALVE PANEL

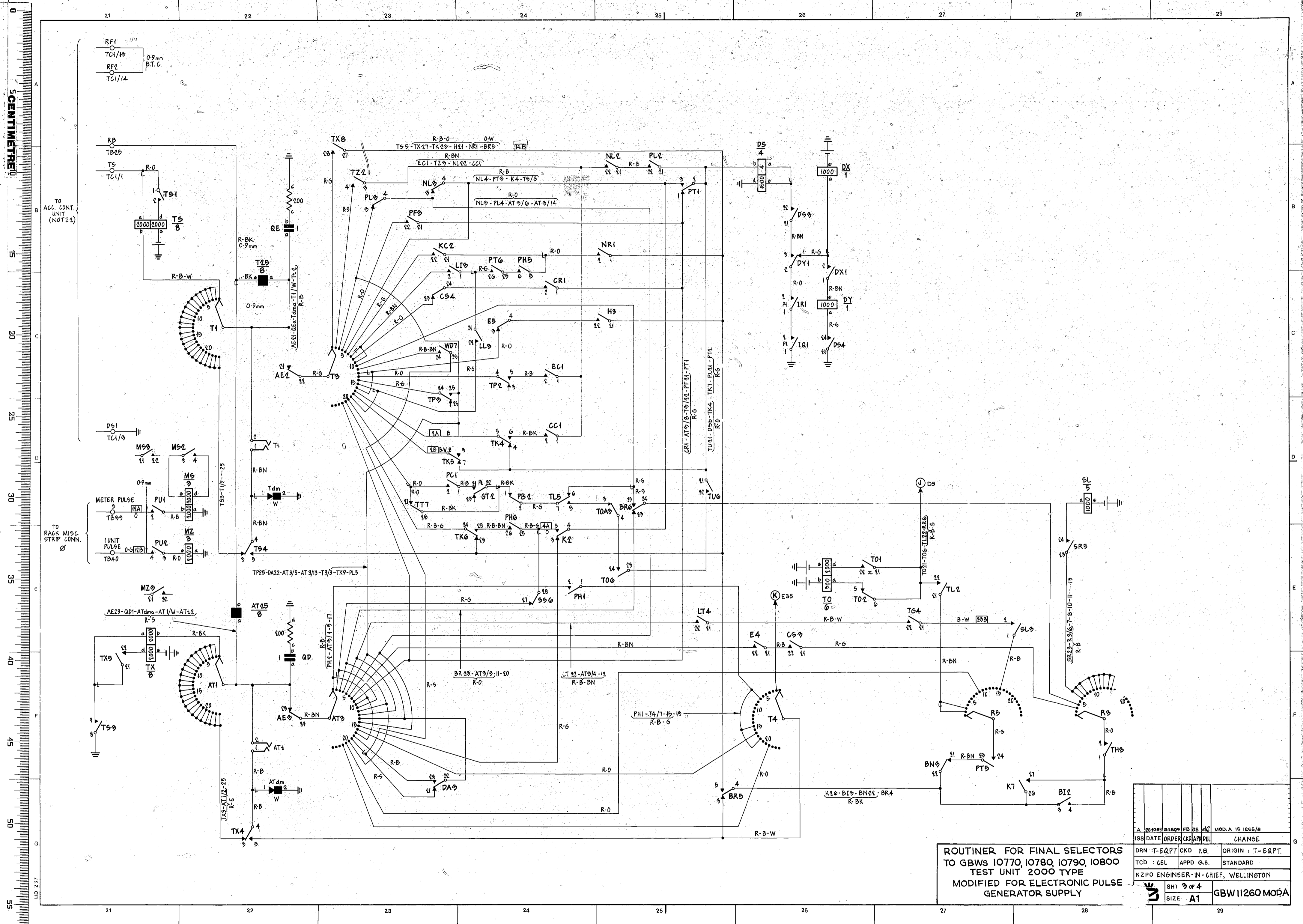
**ROUTER FOR FINAL SELECTORS
TO GBW's 10770, 10780, 10790, 10800
TEST UNIT 2000 TYPE
MODIFIED FOR ELECTRONIC GENERATOR SUPPLY**

DEL	CHECKED	ORDER	DATE	ISS	REVISION
24	26	26	15	15	15

ENGINEER-IN-CHIEF, WELLINGTON
COY HQ
DRAWN T. EPT. TRACED 246
A1 GBW 11260 MODA

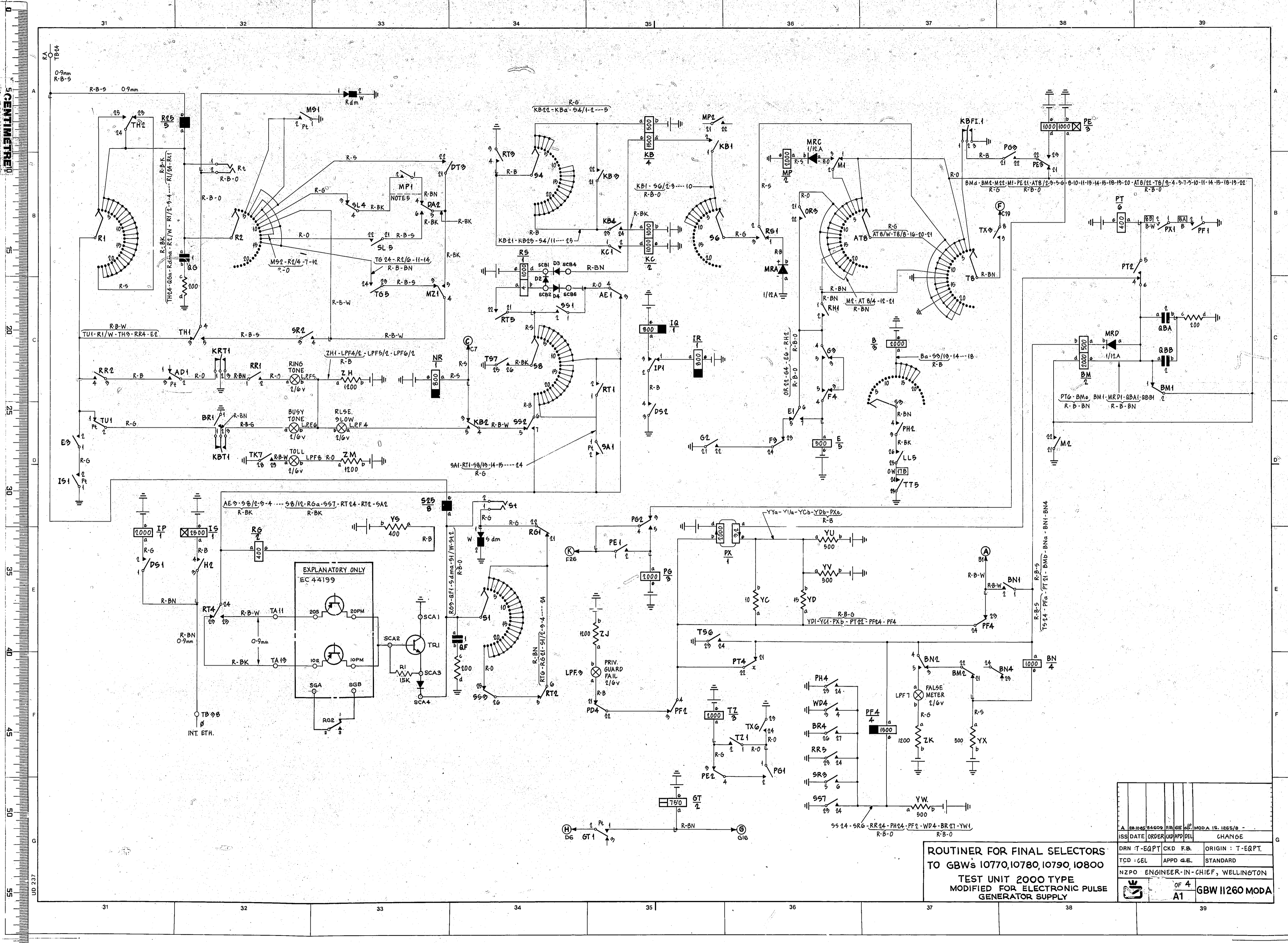


TO ROUT. ACC. EQUIP.



ROUTINER FOR FINAL SELECTORS
 TO GBWS 10770, 10780, 10790, 10800
 TEST UNIT 2000 TYPE
 MODIFIED FOR ELECTRONIC PULSE
 GENERATOR SUPPLY

ISS DATE	ORDER	CKD	F.B.	DEL	CHANGE
TCD	CEL	APPD	G.E.	STANDARD	
NZPO ENGINEER-IN-CHIEF, WELLINGTON					
SH1	OF 4	GBW11260 MODA			
SIZE	A1				



**ROUTINER FOR FINAL SELECTORS
TO GBWs 10770, 10780, 10790, 10800
TEST UNIT 2000 TYPE
MODIFIED FOR ELECTRONIC PULSE
GENERATOR SUPPLY**

ISS DATE	ORDER	APPD	DEL	CHANGE
DRN T-EQPT	CKD F.B.	ORIGIN	T-EQPT.	
TCD : CEL	APPD G.E.	STANDARD		
NZPO	ENGINEER-IN-CHIEF, WELLINGTON			
OF 4			A1 GBW 11260 MODA	