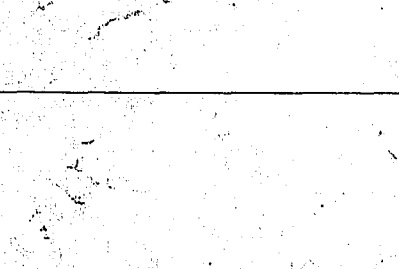
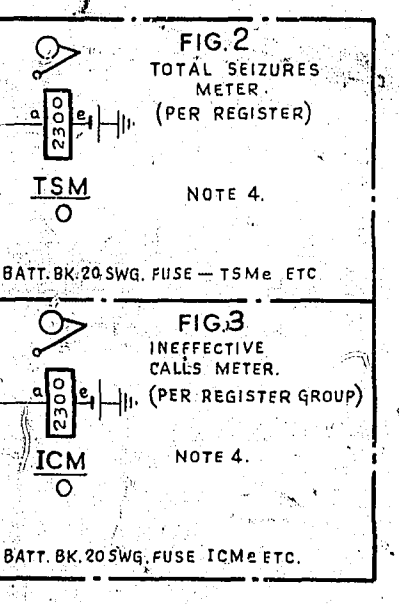


FIG. 1



FROM INTERWORKING RELAY SET TYPE 504 REGISTER HUNTER 60W11150 OR EQUIV. 71A T.O.F. (WHEN SPEC'D)

SS SWITCH POSITION	FEATURE
1	NORMAL
2	OUTSTEP THOUSANDS
6	HUNTING CONTROL & AWAIT HUNDREDS (OR PASS BY)
7	OUTSTEP HUNDREDS
11	HUNTING CONTROL & AWAIT TENS
12	OUTSTEP TENS
14	AWAIT FINAL & UNITS INSTEP
17	OUTSTEP UNITS
19	RELEASE (NORMAL CALL CONDITION)
20	DELAYED PASS BY AFTER PREMATURE RELEASE
21	PASS BY AFTER PREMATURE RELEASE
22 & 23	CHECK RELEASE OF SELECTORS
24	RELEASE (PREMATURE RELEASE CONDITION)

FOR USE OAMARU CENTRAL

GBW11160 MOD-A

AMERICAN PACIFIC

ISSUE DATE: APRIL 1971

SIZE: 11x17

TYPE: S4

INTERWORKING REGISTER

BATT. (W) U12-Mob-Tge-CoB-Hob-Hoe-Ice-Kb-ke-Tr-Re-SRe-Pre
TSe-TAb-TAe-JHSe-Ude-YA2-YC2-MUdme-Cdme-Ddme
RXB2
EARTH (R) U11-JH4-HQ23-H05-K24-K28-K1-K8-TR1-TR4-SR21-PR23-PR27-PR7-TS21-TS1-JHS1-O54-SS1-SS2/IC-SS2/5-MU1-Ce1-Del-KB31-KH02-QA4-QB4-QC4-QD4

NOTES:
1. FUSING- FIG. 1, 3-0A PER CIRCUIT. FIG. 2, 1-5A PER 20 METERS. FIG. 3, 1-5A PER 20 METERS.
2. ALL WIRING TO BE 25 SWG. UNLESS OTHERWISE SPECIFIED.
3. Ø FOR WIRING SEE GBW. 11460 OR EQUIV.
4. AT SOME EARLY EXCHANGES THESE METERS ARE MOUNTED ON THE M.A.R.
5. JACK POINTS U9 & U11 TO MAKE CONTACT WHEN RELAY SET IS REMOVED.
6. ON SOME EARLY REGISTERS RELAYS TS AND TR WERE 1500 OHMS.
7. CONTACTS CC2, JHS3, TR1 & 4, K4 5 & 8, SR3, IC4 WERE ORIGINALLY SUPPLIED AS SILVER BUT PALLADIUM AS SHOWN SHOULD BE USED WHEN SPRING REPLACEMENT BECOMES NECESSARY.