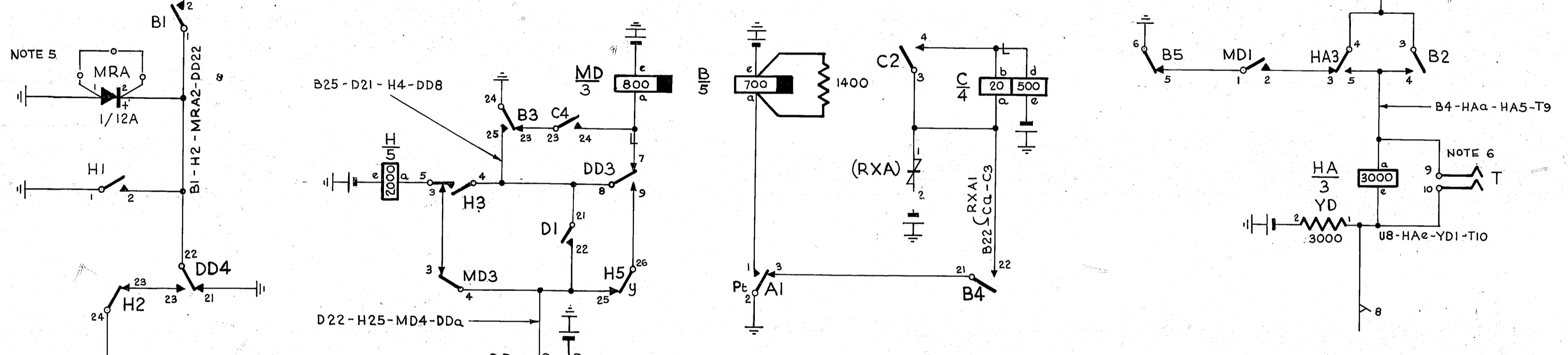
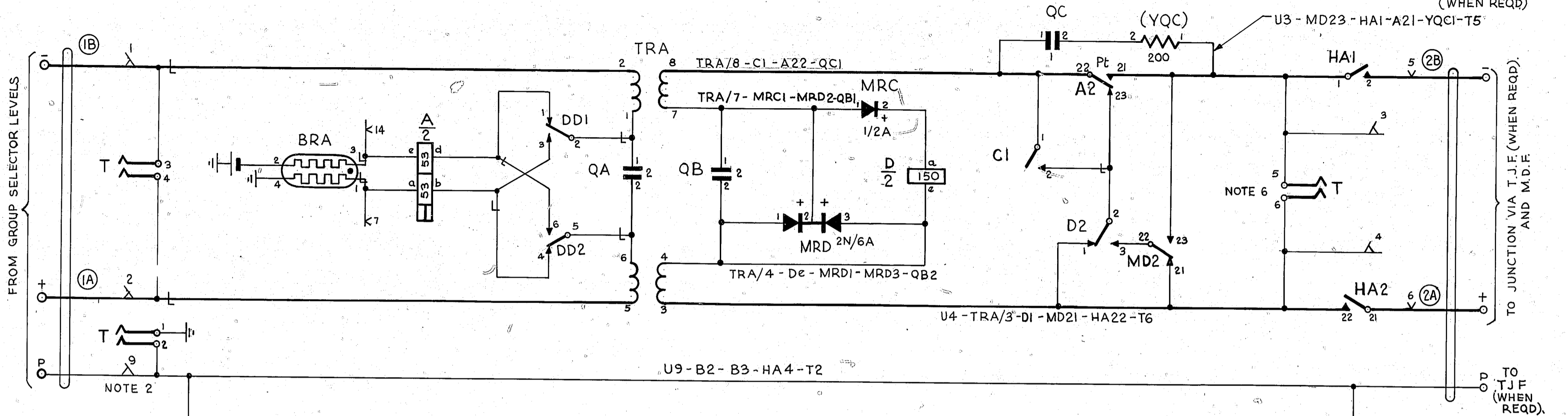


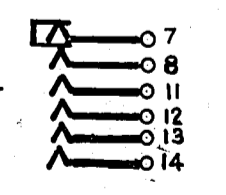
T.D.F. O/G OR
I.D.F. MULT.

IDF LOCAL
(WHEN REQD)



NOTES

1. FUSING:- 1.5A 1 PER CCT.
2. SHELF JACK U-POINTS 9 & 11, TO MAKE CONTACT WHEN RELAY SET IS REMOVED.
3. ALL WIRE TO BE 0.5mm UNLESS OTHERWISE SPECIFIED.
4. Ø FOR WIRING SEE GBW 10640 OR EQUIVALENT.
5. WHEN LOCAL METERING IS NOT REQUIRED, OMIT POS. BATT. CONNECTION & ADD STRAPS SHOWN
6. ON SOME EQUIPMENT MODIFIED FROM GBW 1110 TEST JACK SPRINGS WERE NOT FITTED ACROSS OUTGOING LEADS AND AN EIGHT POINT TEST JACK ONLY WAS FITTED, WITH T5 & T6 CONNECTED TO THE 'HA' RELAY.



BATT. BK FUSE (3B) 0.7mm U12

ETH. R ETH BAR (3A) U11

BATT. W U12-Bc-He-MDe-DDb-DDe Ce YD2-BRA2

EARTH R U11-B24-B6-H1-MRA1-DD21-DD25-A2-BRA4-T1

POS. BATT. R-B U15-YA2

NOT TO BE USED FOR NEW WORK

				AUTO TO AUTO RELAY SET WITHOUT FORWARD HOLDING	
RETRACED & METRICATED				157674	3A 9-8-78 RED
NOTE 5 AMD. ALTYE STRAP ON MRA				30406	3 17-4-72 B.S-H
ADDED NZ. NOTE A DELETED.					
AMENDMENT PARTICULARS		ORDER	ISSUE	DATE	APPD
NZPO				GBW 1111	

