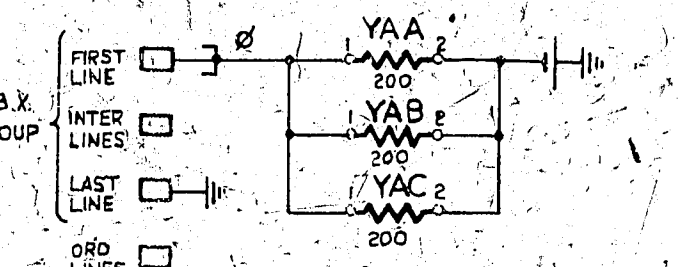


N.Z.P.O.	DRAWN	CHECKED	WIRING	CIRCUIT
	B.W.H.			
AMENDMENT PARTICULARS				
	ISSUE	DATE	BY	
	1	1/12/57	GBW	
	2	6/7/58	GBW	
	3	1/12/58	GBW	
	4	1/12/58	GBW	
	5	1/12/58	GBW	
	6	1/12/58	GBW	
	7	1/12/58	GBW	
	8	1/12/58	GBW	
	9	1/12/58	GBW	
	10	1/12/58	GBW	
	11	1/12/58	GBW	
	12	1/12/58	GBW	
	13	1/12/58	GBW	
	14	1/12/58	GBW	
	15	1/12/58	GBW	
	16	1/12/58	GBW	
	17	1/12/58	GBW	
	18	1/12/58	GBW	
	19	1/12/58	GBW	
	20	1/12/58	GBW	
	21	1/12/58	GBW	
	22	1/12/58	GBW	
	23	1/12/58	GBW	
	24	1/12/58	GBW	
	25	1/12/58	GBW	
	26	1/12/58	GBW	
	27	1/12/58	GBW	
	28	1/12/58	GBW	
	29	1/12/58	GBW	
	30	1/12/58	GBW	
	31	1/12/58	GBW	
	32	1/12/58	GBW	
	33	1/12/58	GBW	
	34	1/12/58	GBW	
	35	1/12/58	GBW	
	36	1/12/58	GBW	
	37	1/12/58	GBW	
	38	1/12/58	GBW	
	39	1/12/58	GBW	
	40	1/12/58	GBW	
	41	1/12/58	GBW	
	42	1/12/58	GBW	
	43	1/12/58	GBW	
	44	1/12/58	GBW	
	45	1/12/58	GBW	
	46	1/12/58	GBW	
	47	1/12/58	GBW	
	48	1/12/58	GBW	
	49	1/12/58	GBW	
	50	1/12/58	GBW	
	51	1/12/58	GBW	
	52	1/12/58	GBW	
	53	1/12/58	GBW	
	54	1/12/58	GBW	
	55	1/12/58	GBW	
	56	1/12/58	GBW	
	57	1/12/58	GBW	
	58	1/12/58	GBW	
	59	1/12/58	GBW	
	60	1/12/58	GBW	
	61	1/12/58	GBW	
	62	1/12/58	GBW	
	63	1/12/58	GBW	
	64	1/12/58	GBW	
	65	1/12/58	GBW	
	66	1/12/58	GBW	
	67	1/12/58	GBW	
	68	1/12/58	GBW	
	69	1/12/58	GBW	
	70	1/12/58	GBW	
	71	1/12/58	GBW	
	72	1/12/58	GBW	
	73	1/12/58	GBW	
	74	1/12/58	GBW	
	75	1/12/58	GBW	
	76	1/12/58	GBW	
	77	1/12/58	GBW	
	78	1/12/58	GBW	
	79	1/12/58	GBW	
	80	1/12/58	GBW	
	81	1/12/58	GBW	
	82	1/12/58	GBW	
	83	1/12/58	GBW	
	84	1/12/58	GBW	
	85	1/12/58	GBW	
	86	1/12/58	GBW	
	87	1/12/58	GBW	
	88	1/12/58	GBW	
	89	1/12/58	GBW	
	90	1/12/58	GBW	
	91	1/12/58	GBW	
	92	1/12/58	GBW	
	93	1/12/58	GBW	
	94	1/12/58	GBW	
	95	1/12/58	GBW	
	96	1/12/58	GBW	
	97	1/12/58	GBW	
	98	1/12/58	GBW	
	99	1/12/58	GBW	
	100	1/12/58	GBW	

NOTE 9. 1. BATT (V) :- U12-WS2-HE-YD2-YE2-YF2-  
-YC2-AE-QB-YE-RE-BRA2-YQ2-YJ2  
EARTH (R) :- U11-D1-D4-HS1-C22-CD-C4-H23-  
-Ab-B4-B7-DAa-DA3-DB3-  
-MRA1-BRA4-QC5-T7-T9  
POSITIVE BATT. (Y) :- U20-YA2

- NOTES**
- FUSE - RC 1.5A PER CIRCUIT. (FC 3.0A) POS. BATT. - 0.5A PER 10 COITS.
  - CONTACTS 11 OF LEVEL 1 (REVERSE NUMBERED NZ DIAL) OR LEVEL 9 (STANDARD BPO DIAL) TO BE MULTIPLIED AND WIRED TO MISC. STRIP CONN.
  - CONNS OF P2 BANKS :-



- Ø FOR WIRING SEE GBW 10680 OR EQUIV.
- WHEN FULL AVAILABILITY FROM GROUP SELECTORS IS SPECIFIED, INCOMING LEADS ARE CABLED DIRECT FROM BANK MULT. STRIP CONN. AND NOT VIA T.O.F. IN SUCH CASES THE FOLLOWING STRAPS MUST BE APPLIED ON SITE. IN ALL CASES STRAP U11 TO U7.
- WHEN NO SELECTOR IS EQUIPPED STRAP U9 TO U7 EXCEPT WHERE GBW 14850 NOTE 2.9 APPLIES.
- WHERE ALTERNATIVE MECH. SPRINGSET N° ARE SHOWN AS 31A, 21/2 etc. THE N° BEFORE & AFTER THE OBLIQUE STROKE APPLY TO TYPE 2 & TYPE 1 SPRINGSETS RESPLY. N° WITHOUT OBLIQUE STROKE APPLY TO BOTH TYPES OF SPRINGSETS.
- WHEN CENTRALISED I.D.F. IS SPECIFIED THE - & P TERMINALS ON THE BANK MULT. STRIP CONN. ARE CABLED TO I.D.F. MULT.
- ALL WIRING TO BE 0.5 mm UNLESS OTHERWISE SPECIFIED.

GBW.10791