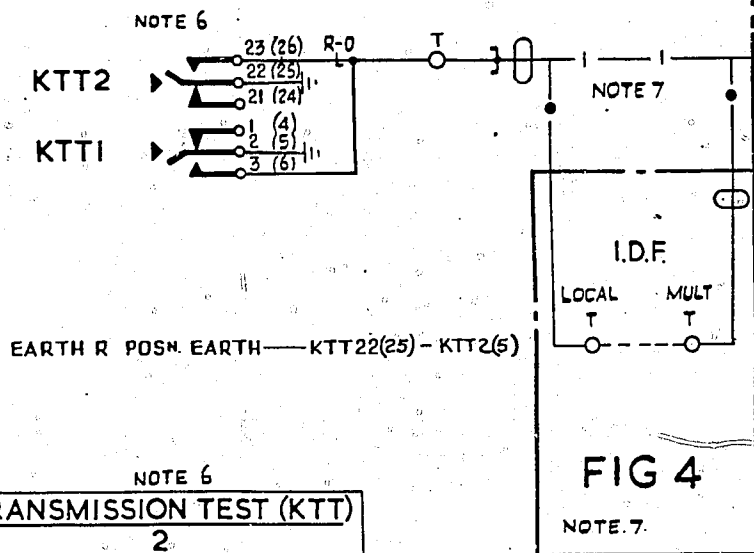


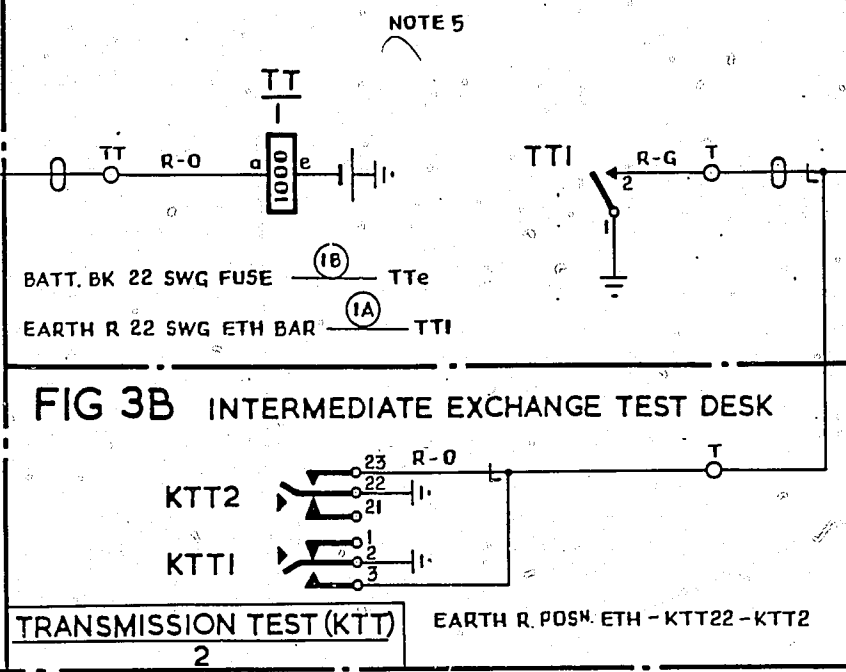
FIG 1 TERMINAL EXCHANGE TEST DESK

(1 PER TEST & OPERATE JACK USED FOR REMOTE TESTING)



JUNCTION VIA M.D.F.

FIG 3A INTERMEDIATE EXCHANGE M.A.R.



JUNCTION VIA M.D.F.

FIG. 2 REMOTE EXCHANGE M.A.R.

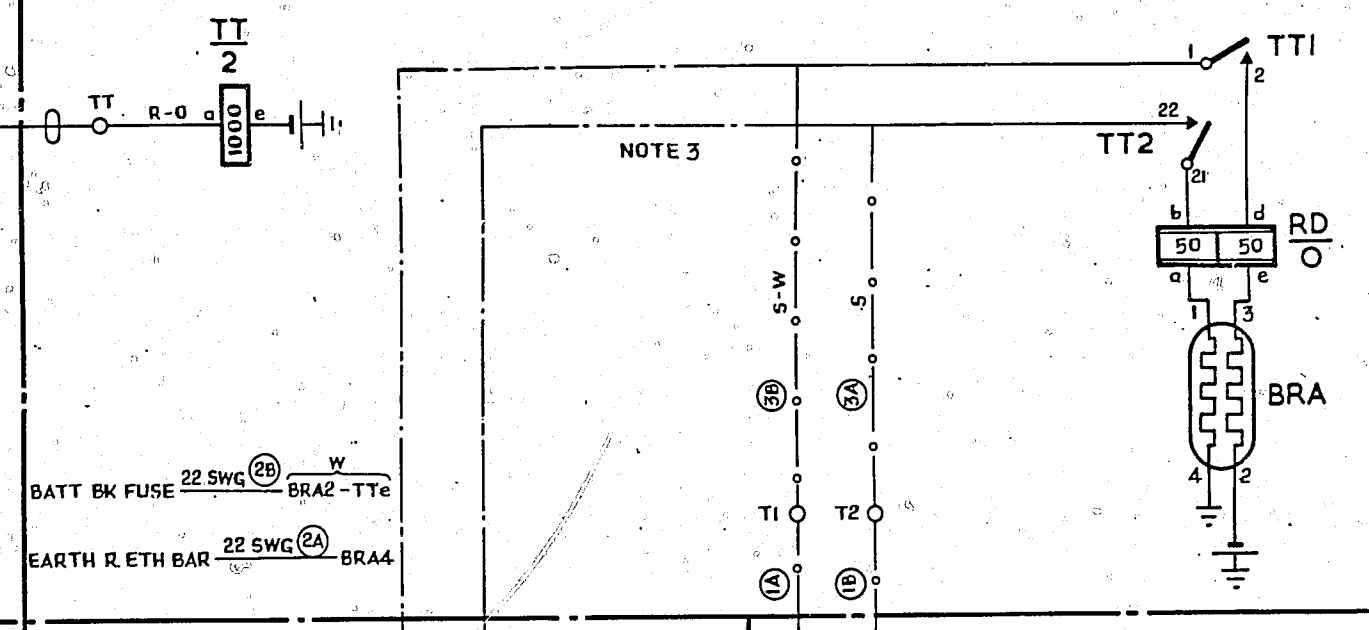
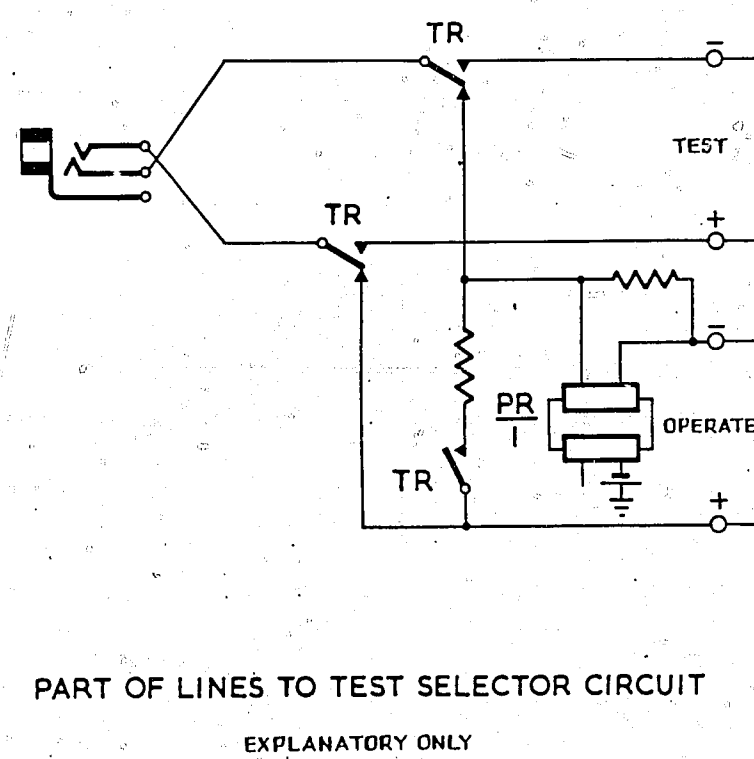
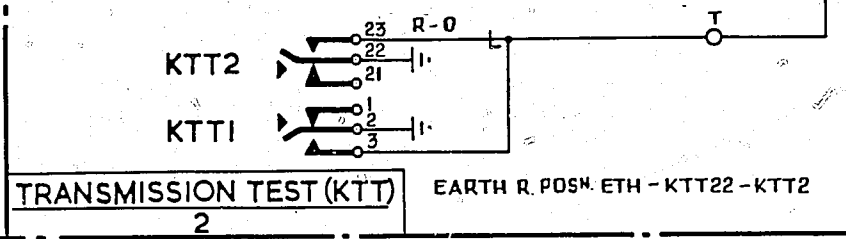


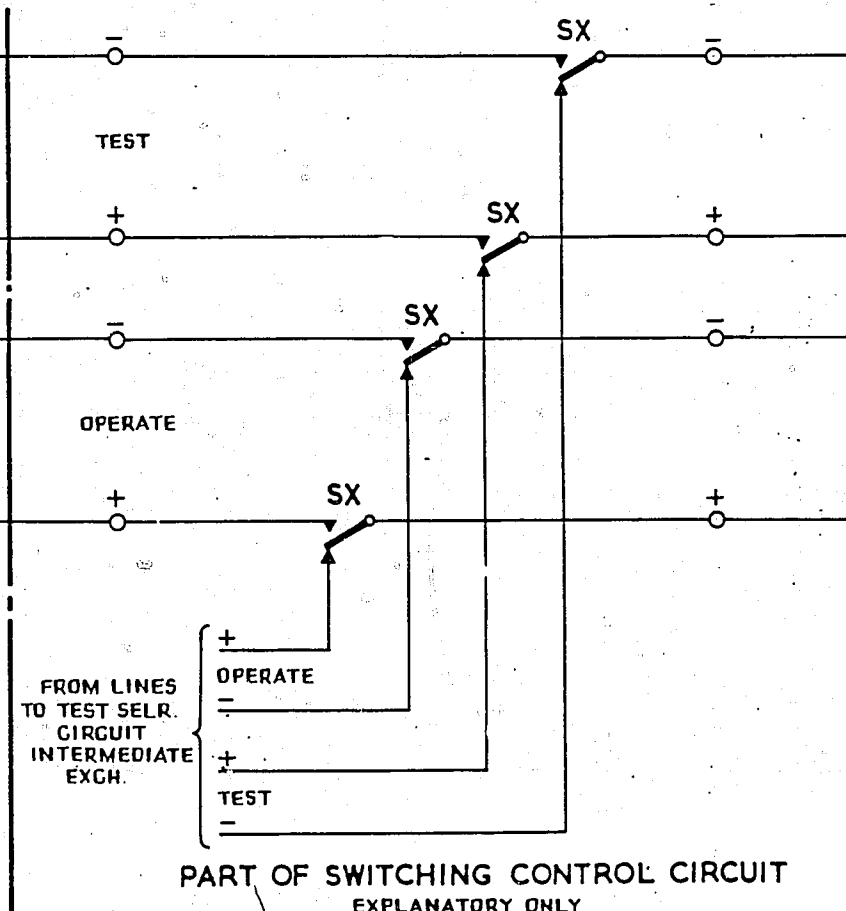
FIG 4

NOTE 7.

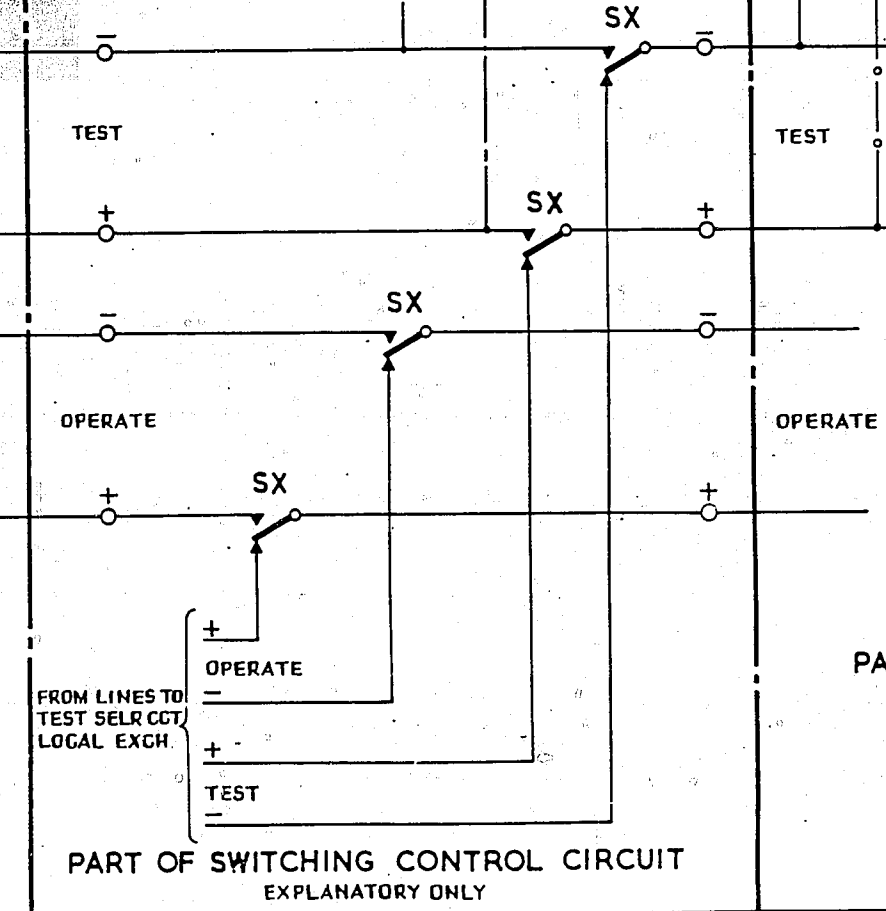
FIG 3B INTERMEDIATE EXCHANGE TEST DESK



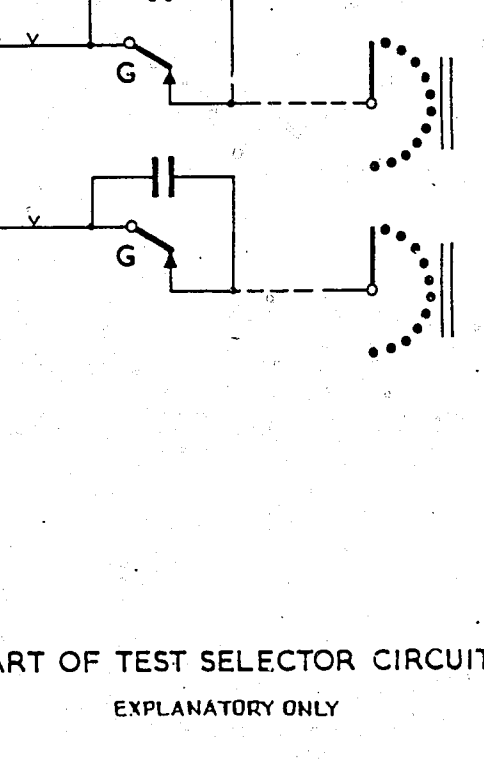
EXPLANATORY ONLY



EXPLANATORY ONLY



EXPLANATORY ONLY



EXPLANATORY ONLY

NOTES

1. FUSING :- FIG 2 1-5A FIG 3A FUSED WITH ASSOCIATED SWITCHING CONTROL CIRCUIT.
2. FIG 2 FITTED PER TEST SELECTOR AT REMOTE EXCHANGE WHEN NO LOCAL ACCESS IS PROVIDED. OTHERWISE FITTED PER SWITCHING CONTROL CIRCUIT.
3. WHEN SWITCHING CONTROL CIRCUIT IS NOT FITTED, DELETE CONNECTIONS SHOWN THUS ----- AND ADD CONNECTIONS SHOWN THUS - - - - -
4. ALL WIRING TO BE 25 SWG UNLESS OTHERWISE SPECIFIED.
5. WHEN TRANSFER OF CONTROL TO CENTRAL EXCH. ONLY IS REQUIRED FIGS 3A & 3B ARE NOT PROVIDED. IN THIS CASE FIG 1 IS CABLED VIA JUNCTION DIRECTLY TO FIG 2 AND SWITCHING CONTROL CCT IS TO GBW 10470. WHEN TRANSFER OF CONTROL TO CENTRAL AND INTERMEDIATE EXCHS IS PROVIDED ALL FIGS ARE USED AND SWITCHING CONTROL CCT. IS TO GBW 15320

6. THE TRANSMISSION TEST KEY SERVING A PARTICULAR LINES TO TEST SELECTOR CIRCUIT IS TO BE LOCATED IMMEDIATELY ABOVE THE TEST DESK LAMP(S) KEY AND JACK OF THAT CIRCUIT. WHEN USED ON W.E. TYPE TEST DESKS, THIS TRANSMISSION TEST KEY IS A LEVER TYPE AND IS COMBINED WITH THE RELEASE KEY ON GBW 5650. IN THIS CASE, THE SPRING NUMBERING SHOWN IN BRACKETS IS APPLICABLE
7. WHEN CABLING TO THE M.D.F. VIA THE I.D.F. IS REQUIRED, PROVIDE FIG. 4 AND CONNECTIONS SHOWN - - - - - IN LIEU OF CONNECTION SHOWN - | -

TRANSMISSION TESTING OF SUBSCRIBERS APPARATUS (FROM CENTRAL EXCHANGE OR FROM CENTRAL & INTERMEDIATE EXCHANGES)			
FIG 4 AND NOTE 7 ADDED	(82786)	5	24.7.64 DBH
NOTE 6 REF. TO KEY LOCATION ADDED		4	
NOTE 6 & ALTERNATIVE KTT SPRING N ^o s ADDED		3	
REDRAWN, FIGS 3A & 3B ADDED.		2	
AMENDMENT PARTICULARS	ISSUE DATE	APPD.	REF: GSI. 35.7
NZPO		DRAWN	CHECKED
GBW 10610		WIRING	CIRCUIT