

FIG. 1
FUSE ALARM

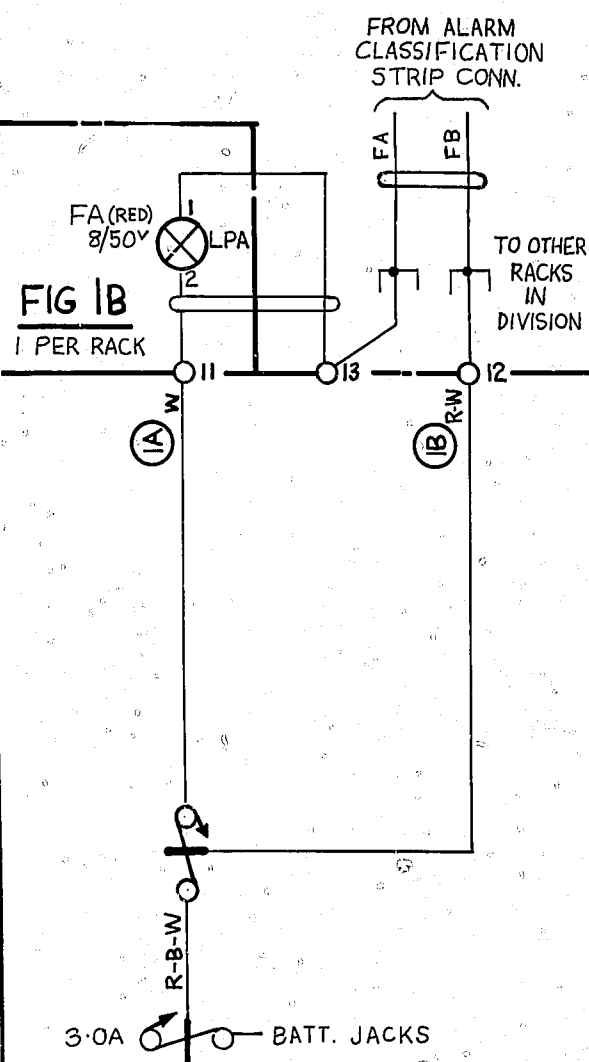


FIG. 1A
1 PER RACK

FIG. 2
BATTERY JACKS

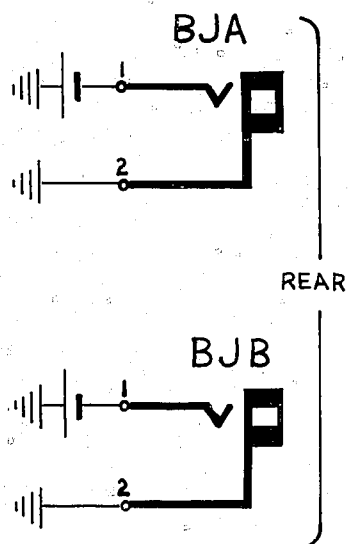


FIG. 2A
1 PER RACK

BATT V. FUSE — (1B) — BJA1-BJB1
EARTH R. EARTH BAR — (1A) — BJA2-BJB2

REF GBW 11300 OR EQUIV.

FIG. 3
CONT. RINGING DISTRIBUTION

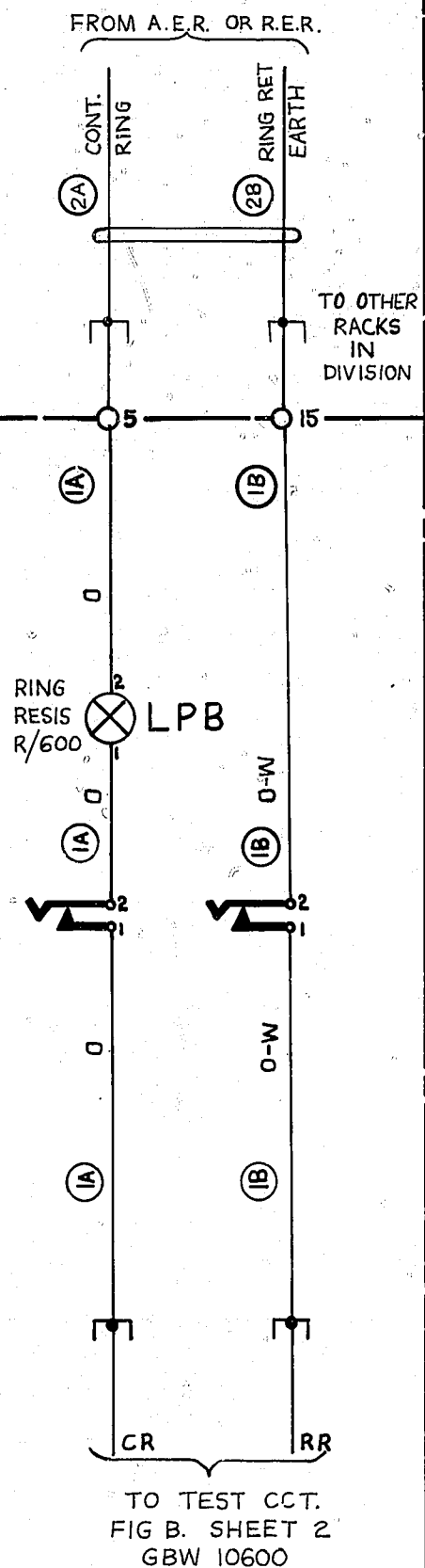


FIG. 3A
1 PER RACK

REF GBW 10970 OR EQUIV.

FIG. 4
N.U. TONE EARTH DISTRIBUTION

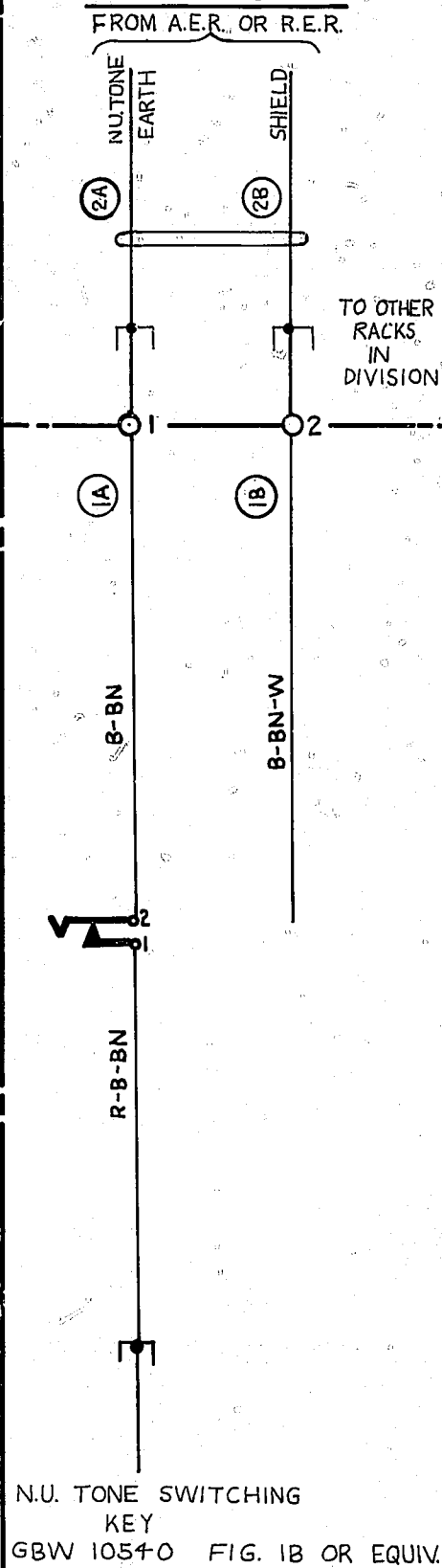


FIG. 4A
1 PER RACK

REF GBW 10970 OR EQUIV.

FIG. 5
HOWLER

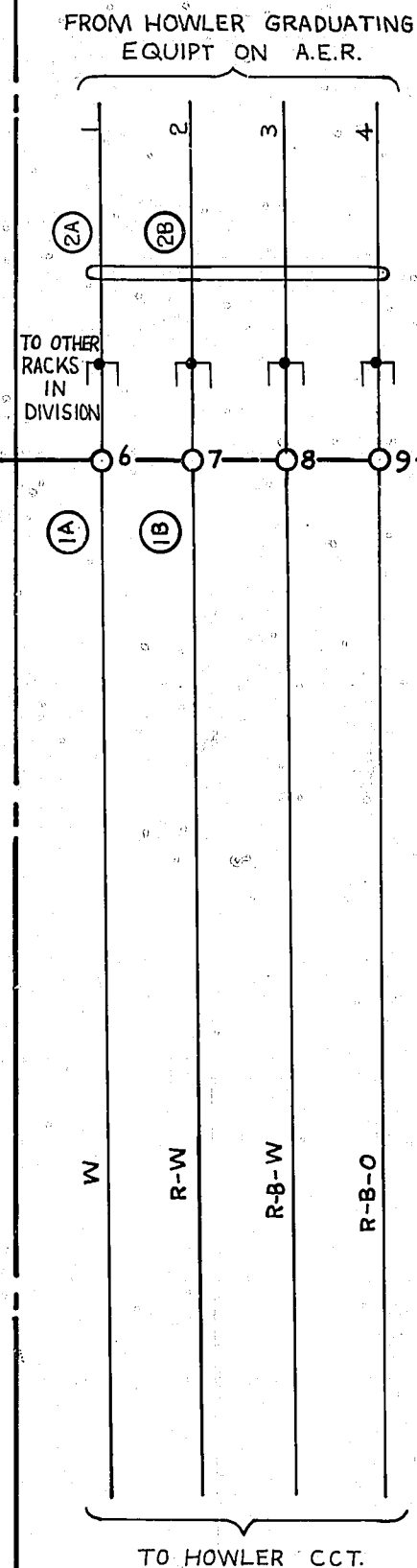


FIG. 5A
1 PER RACK

REF: GBW 10960, GBW 10820 GBW 10821

FIG. 6
POSITIVE BATTERY DISTRIBUTION

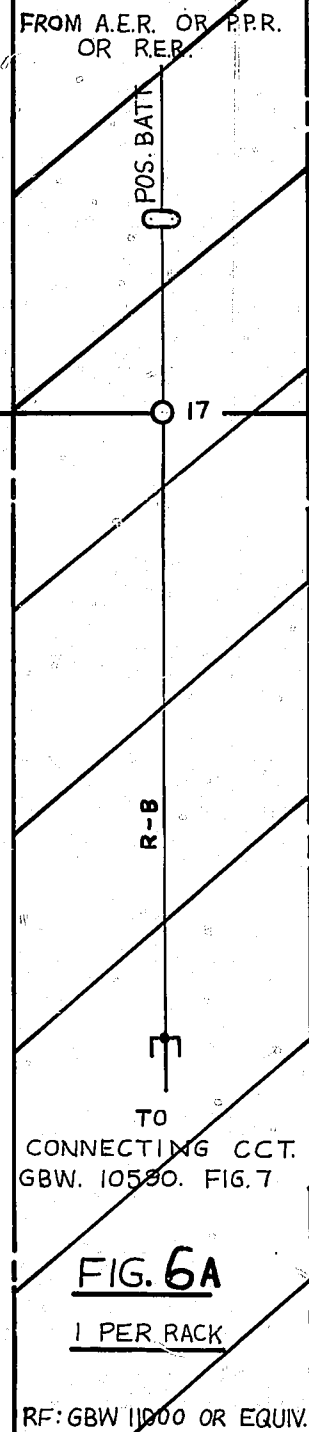


FIG. 6A
1 PER RACK

RF: GBW 11000 OR EQUIV.

NOTES

- EXCEPT WHERE OTHERWISE STATED ALL WIRING BEARING A COLOUR CODE TO BE 0.7 MM.
- UNLESS OTHERWISE SPECIFIED TAGS ARE ON RACK MISC. STRIP CONN.
- ON SOME EARLY EQUIPT. BATT. WIRING IS BK.

COMMON SERVICES RACK WIRING TEST RACKS.

RETRACED	(154594)	8A	9.5.78	R.E.D.
NOTE 1 REVISED. NOTE 3 ADDED (8214)		8	10.12.71	
NO CHANGE ISSUE ADVANCED ONLY (81346)		7	20.11.64	
FIG 6 DELETED.	(72620) (74484)	6	30.7.63	
AMENDMENT PARTICULARS		ISSUE	DATE	APPD
N.Z.P.O.				

REF: G51.32.0

50V E

GBW. 10600

SHEET 1-2

ALL FUSES NOT OTHERWISE SPECIFIED TO BE 1.5A.

REF GBW 10990 OR EQUIV.

FIG. A NIGHT ALARM.

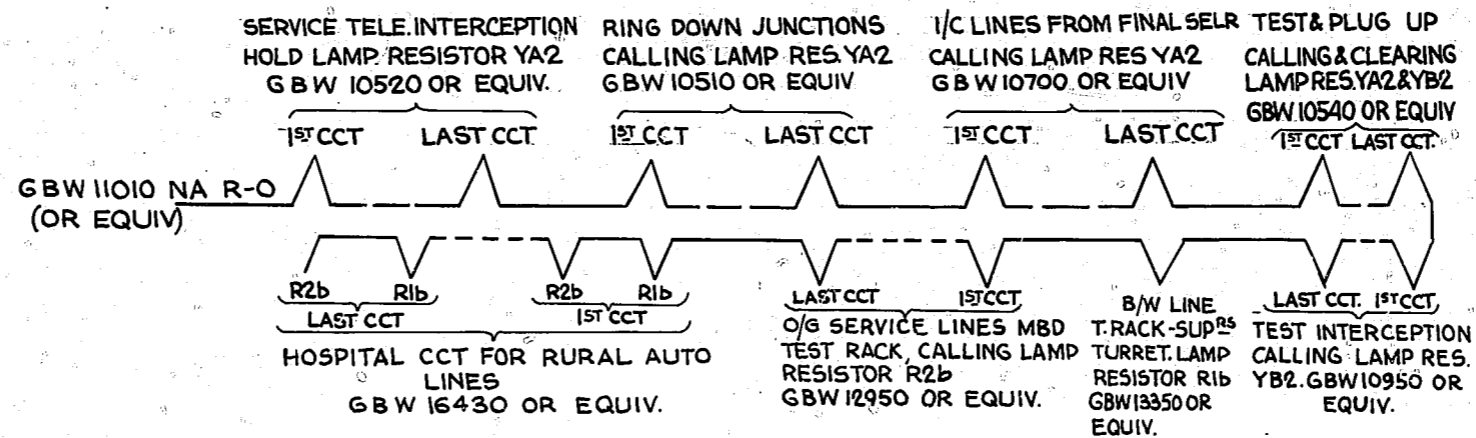
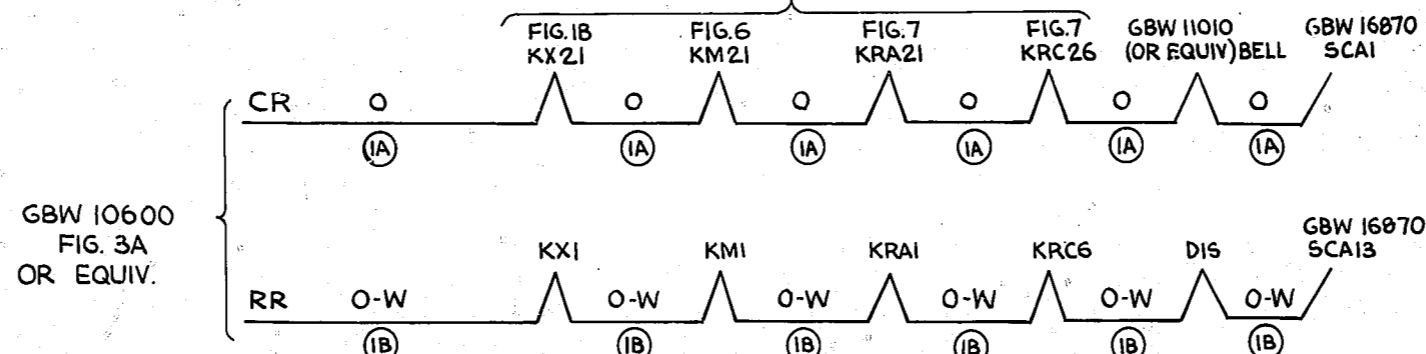


FIG. B CONT. RINGING

GBW 10590 OR EQUIV



				COMMON SERVICES RACK WIRING TEST RACKS			
RETRACED		(157682)	8A	27-7-78	R.E.D.		
FIG. B CONNECTIONS TO GBW 16870 ADDED.		(8214)	8	10-12-71	B.S.-H.		
AMENDMENT PARTICULARS			ISS	DATE	APP	REF: GSI.32.0.	SIZE A3 50V E
N.Z.P.O.			DRAWN	CHECKED	WIRING	ENGR'S	GBW 10600 SHT 2-2

