

FIG. 1 AER
PER EXCHANGE

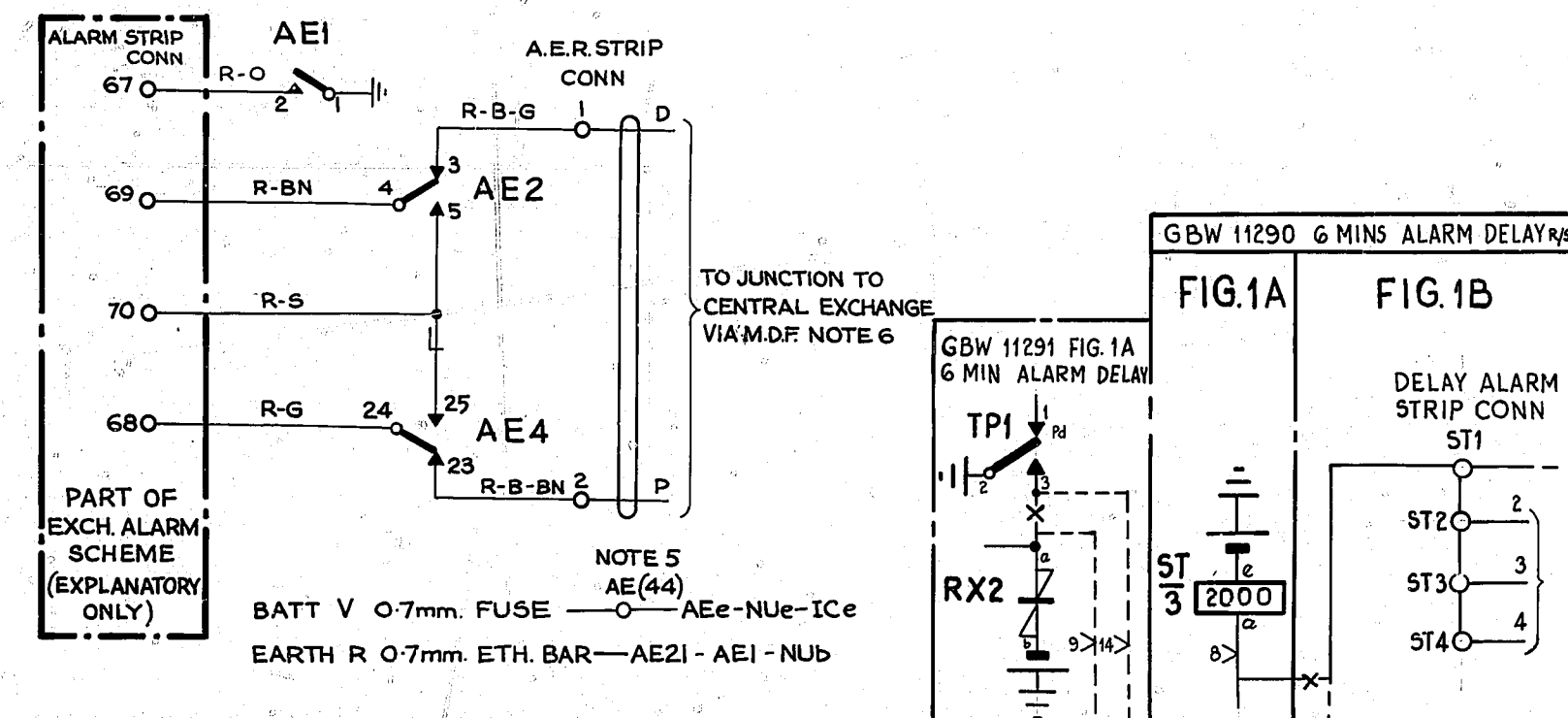
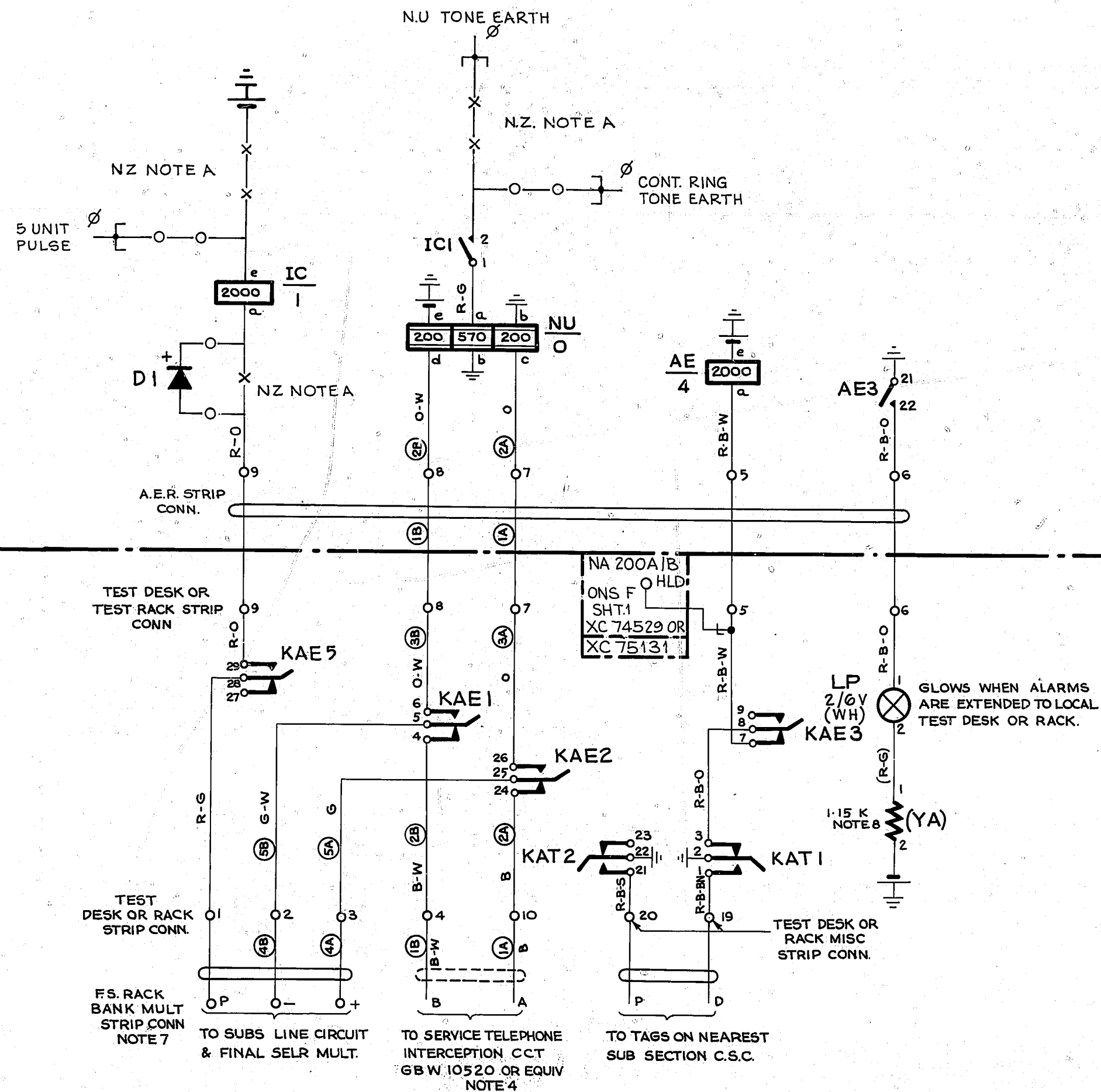


FIG. 2
ALARM EXTENSION KEY
AND LAMP
MOUNTED ON TEST DESK OR RACK
PER EXCHANGE

NOTES

1. FUSING:-1.5A PER EXCHANGE FIG.1 FUSED ON AUXILIARY GROUP FUSE PANEL WHEN FITTED.
1.5A PER EXCHANGE FIG.2
2. EXCEPT WHERE OTHERWISE SPECIFIED ALL WIRING TO BE 0.5mm.
3. Ø FOR WIRING SEE GBW 11060 OR EQUIV.
4. AT SOME EARLY EXCHANGES A & B LEADS WERE CABLED TO M.D.F OR I.D.F. MULT.
5. THIS TERMINAL ON BATT STRIP CONN. IS PROVIDED ONLY WHEN FUSE IS ON AUX. GROUP FUSE PANEL.
6. AT SOME EARLY EXCHANGES, THE P&D LEADS ARE CABLED VIA I.D.F. LOCAL.
7. AT SOME EARLY EXCHANGES THESE TAGS ARE ON I.D.F. LOCAL.
8. AT SOME EARLY EXCHANGES YA IS 1200 OHMS.
9. AT SOME EARLY EXCHANGES BATT. WIRING IS BK.
10. KEY KAE 6 TO BE WIRED TO THE 6 MINS DELAY RELAY SET GBW 11290 OR GBW 11291 TO ALLOW PG SUPERVISORY ALARM LAMPS TO BE DISCONNECTED WHEN EXCHANGE UNATTENDED.

NZ NOTE

A. WHEN SPECIFIED FOR REMOTE TESTING AND VERIFICATION OF STD ACCESS, REMOVE WIRING SHOWN — X — AND CONNECT WIRING SHOWN — O —

BATT V 0.7mm. TERM— YA2 (TEST DESK)
OR FUSE— YA2 (TEST RACK)
EARTH R. ETH BAR OR DESK ETH— KAT2-KAT22-KAE11
0.7 mm

				<input type="checkbox"/> SLOW RELEASE	<input checked="" type="checkbox"/> SLOW OPERATE			
CIP 148 ADDED FIG 2	(54380)	5D	9-11-84	GCG	ALARM EXTENSION. ORIGINATING EXCHANGES (2000 TYPE.)			
AMD TO NZM XI	(42323)	5C	16-2-84	GCG				
REDRAWN & METRICATED	(157681)	5B	20-9-78	RED				
NZ NOTE A & A590C. WIRING ADDED	(68262)	5A	24-7-75	B. S-H				
KAE WAS SHOWN OPERATED NOTE 9 APP.	(21593)	5	14-5-70	R.W.				
AMENDMENT PARTICULARS				ISSUE DATE	APP.	SIZE A2	50V	E
SPEC. FAULTS (KSF)		ALM EXT. TEST. (KAT) + ALM EXT. (KAE)						
2		2 + 6						
NZ.P.O.		DRAWN	CHECKED	WIRING	CIRCUIT	GBW 10570		