

FIG. 1.

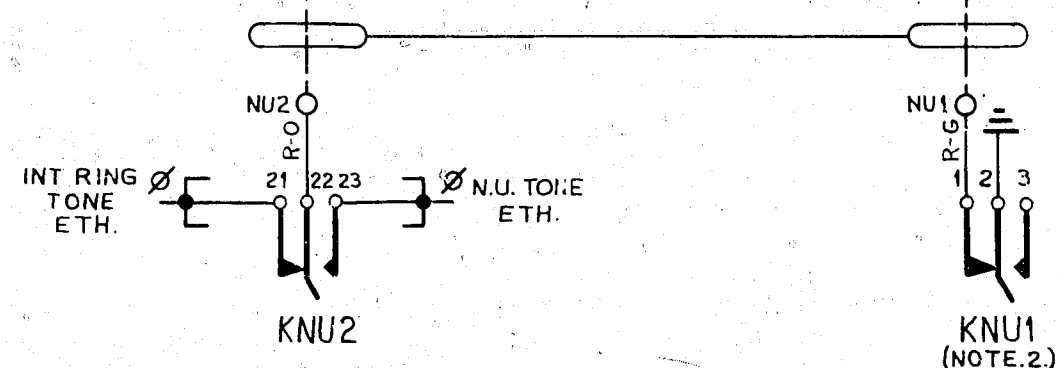


FIG. 2.

N.U. TONE SWITCHING KEY TEST DESK-MISC. SECTION. OR TEST RACK. NOTE 3

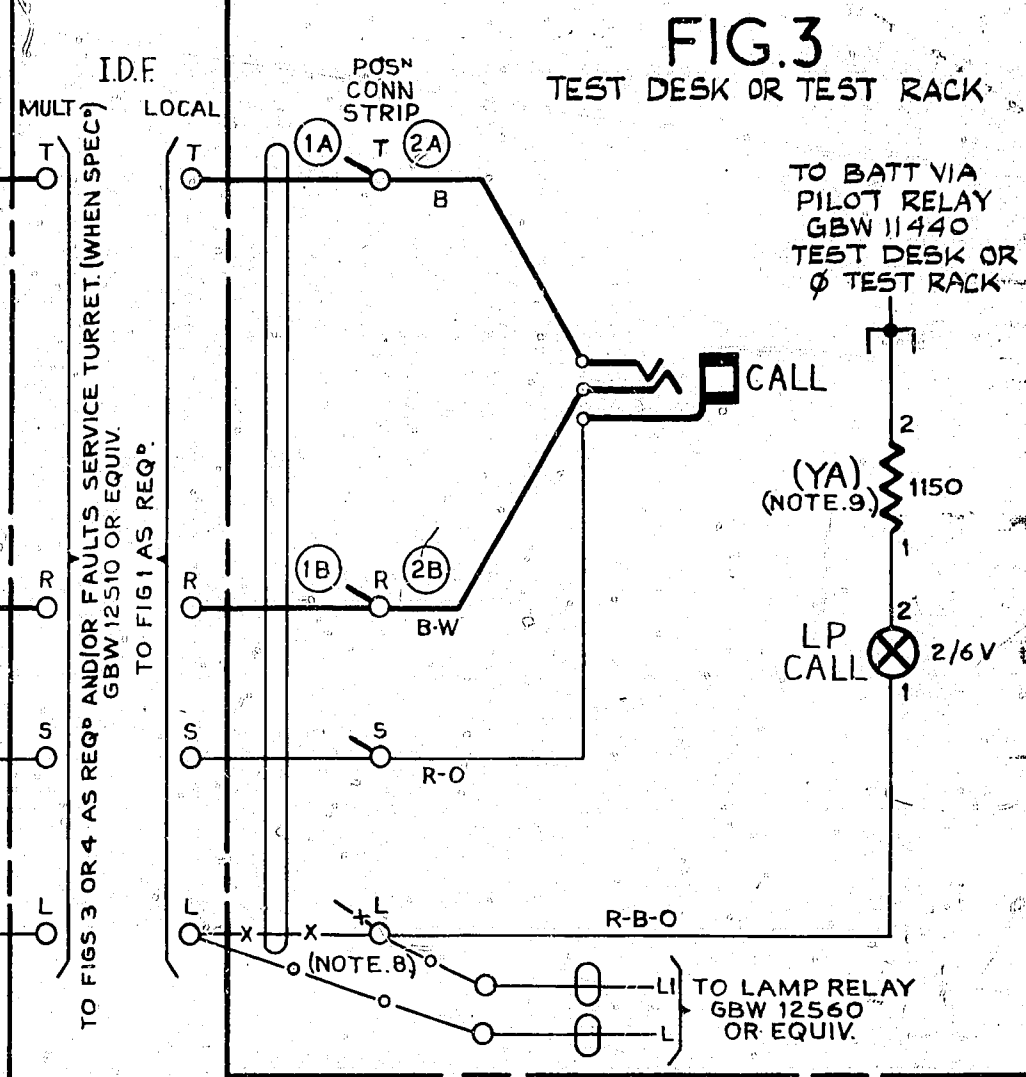


FIG. 3.

TEST DESK OR TEST RACK

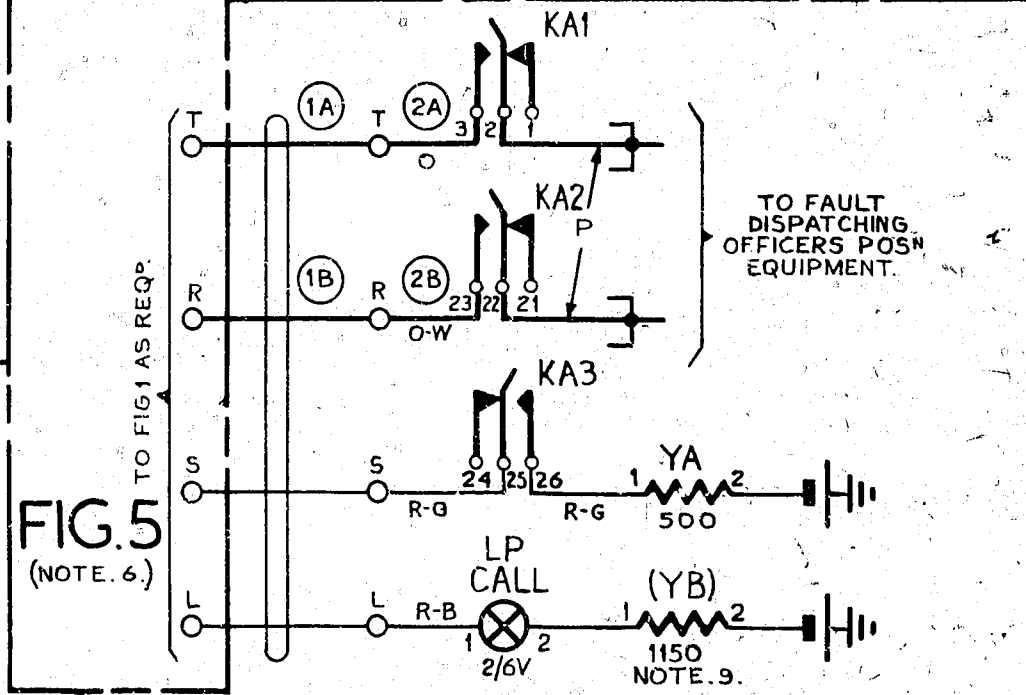


FIG. 4.

FAULT DISPATCHING POSITION

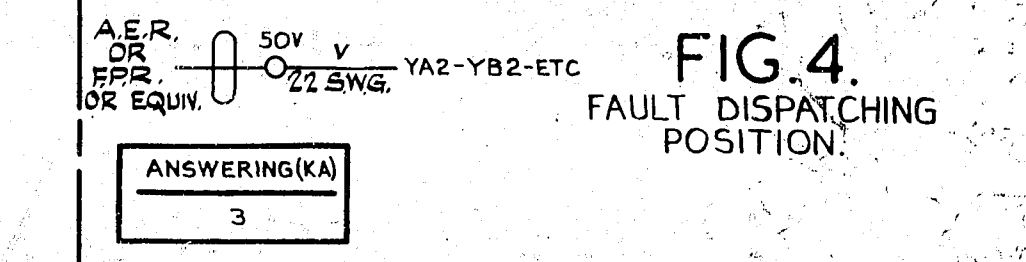


FIG. 5.

(NOTE. 6.)

- NOTES:-
- FUSES:- FIG 1. 1.5A PER CCT. FIG 4. 1.5A PER 20 CCTS.
 - IN FIG 1, SHELF JACK POINTS U9 & U11 TO MAKE CONTACT WHEN RELAY SET IS REMOVED.
 - FIG 2, N.U. SWITCHING KEY TO BE PROVIDED ONE PER GROUP SEL. LEVEL SERVING FAULTSMENS LINES.
 - ALL WIRING TO BE 25 SWG. UNLESS OTHERWISE SPECIFIED.
 - Ø FOR WIRING SEE ASSOCIATED COMMON SERVICE DIAGRAM.
 - WHEN I.D.F IS NOT REQUIRED CABLE DIRECTLY FROM RELAY SET TO DESK OR RACK AND/OR LAMP RELAY OR TO TURRET AS SPECIFIED.
 - WHEN FIG 2 IS NOT REQUIRED WIRE AS SHOWN & DELETE WIRING SHOWN
 - WHEN UP TO 5 LAMP APPEARANCES ARE REQUIRED USE CONNECTIONS SHOWN THUS WHEN OVER 5 LAMP APPEARANCES ARE REQUIRED USE CONNECTIONS SHOWN THUS
 - ON EARLIER EQUIPMENTS LAMP RESISTOR FIG. 3. & LAMP RESISTOR FIG. 4. WERE 1.2K.
 - ON EARLY EQUIPMENT, -ve BATT. COLOUR WAS BK OR W.

N.Z. NOTES :-
A. FOR CROSS-BAR JUNCTIONS OVER 1800 Ω LOOP RESISTANCE USE GBW. 10490 MOD. A.

N.U. SWITCHING (KNU)
2

N.Z. NOTE A ADDED	(68340)	9A	2.5.75	BS-H
NEW COY. TCG. INCORP.	(2467)	9	17.9.73	BS-H
REF TO TEST RACK ADDED IN FIGS 2 & 3.	(8004)	9	23.3.71	BSH
MINOR CCT. MODS. RELAY CR, DIODE DI (FIG.1) & NOTE 10 ADDED. (C.O. 1717)		8	23.9.69	EH
CIRCUIT REDRAWN, CO. REL. MOD. NOTE 9. ADDED (CO. 7807)		7.	1.12.61	GGW
FIG. 5. FAULTS SERVICE WAS COMPLAINTS.		6.	29.4.60	GGB.

AMENDMENT PARTICULARS				ISSUE	DATE	APPD	REF.
NZPO							
A.T.&E. Co. Ltd LIVERPOOL	662 R'05	APPROVED J.C.	O.A.P.	DRAWN J.B.	CHECKED TG.10-11-49	WIRING TG.10-11-49	CIRCUIT HB.

FAULTSMENS LINES TERMINATING ON TEST DESK OR RACK OR FAULT DISPATCHING POSITION. OR EQUIV. WITH TONE SWITCHING KEY.

GBW 10490

SIZE S 50V H