

FIG. 1 TEST RACK

1 PER TEST SELECTOR

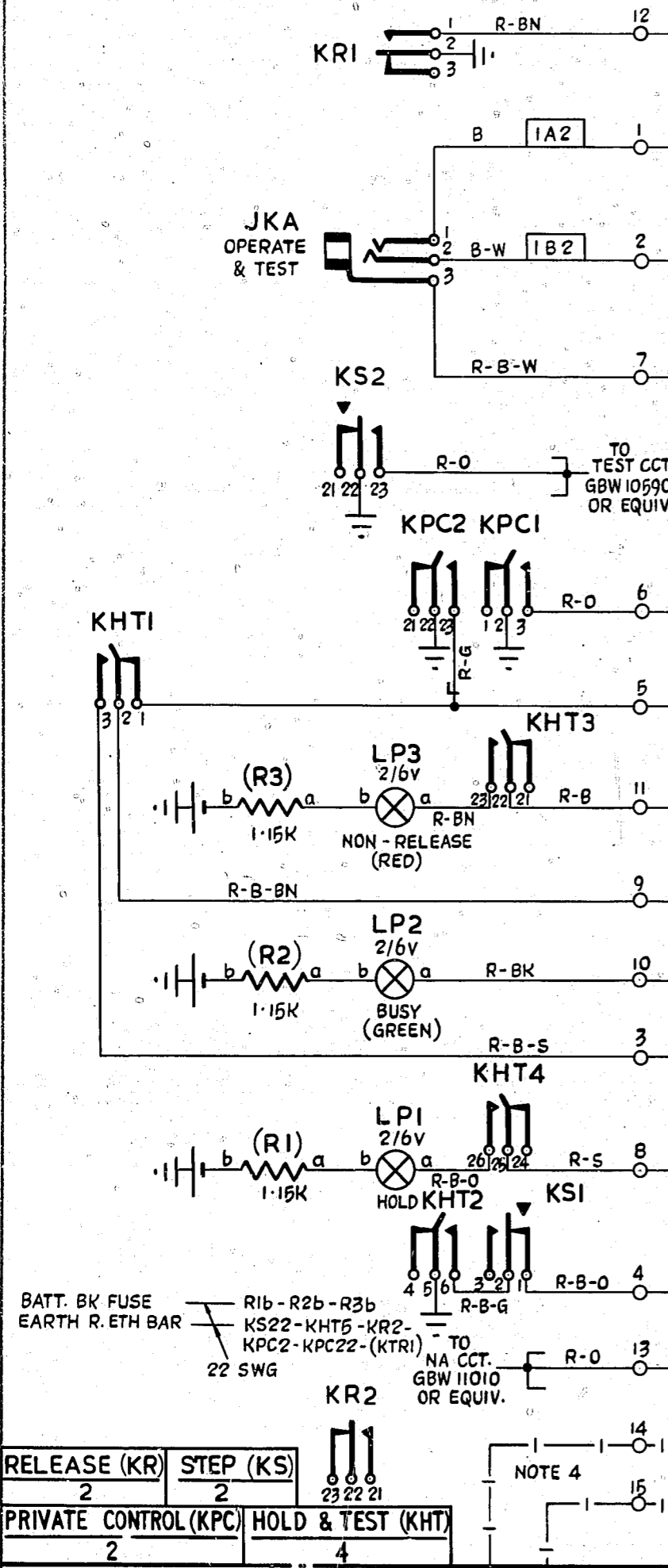
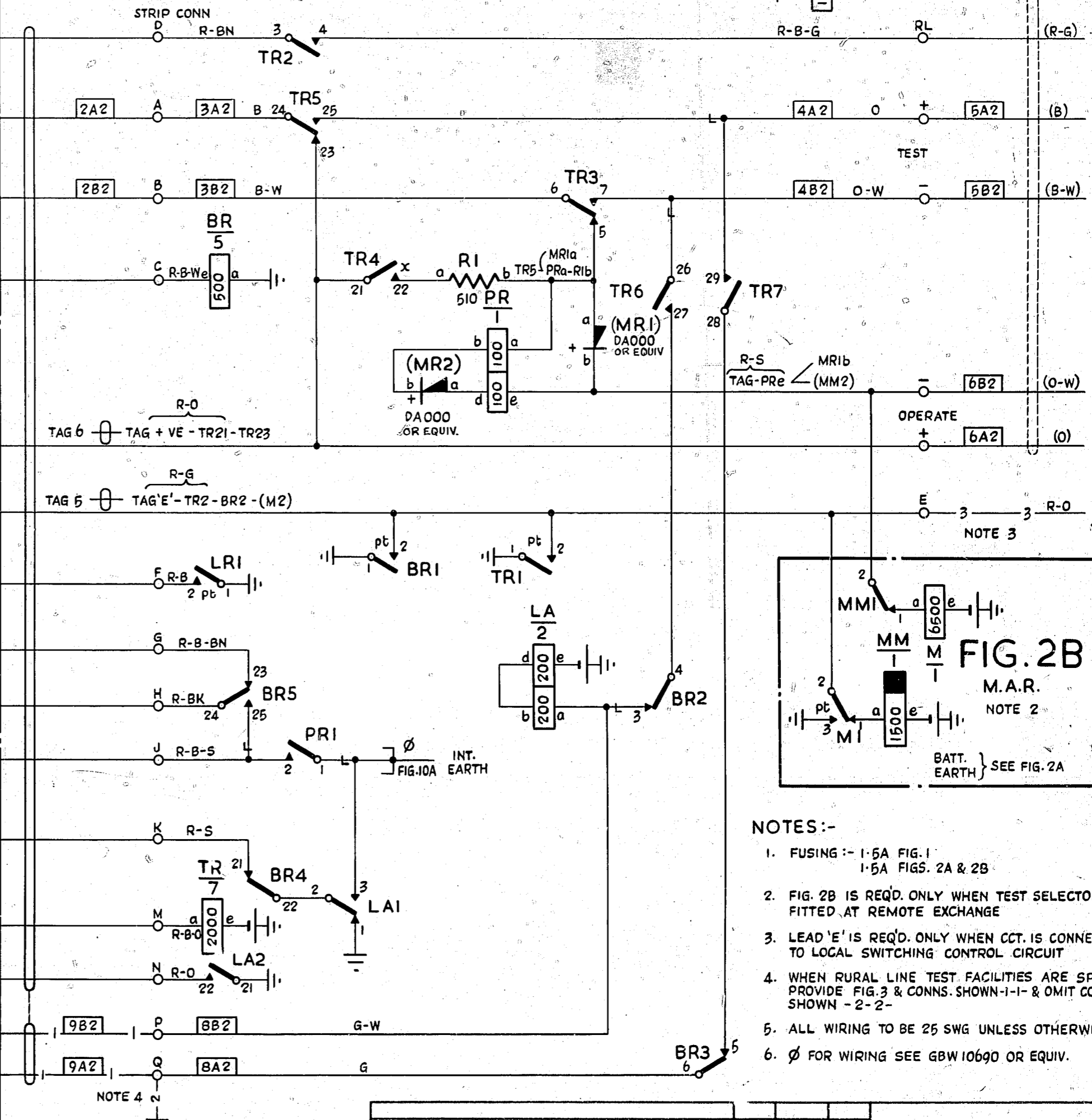
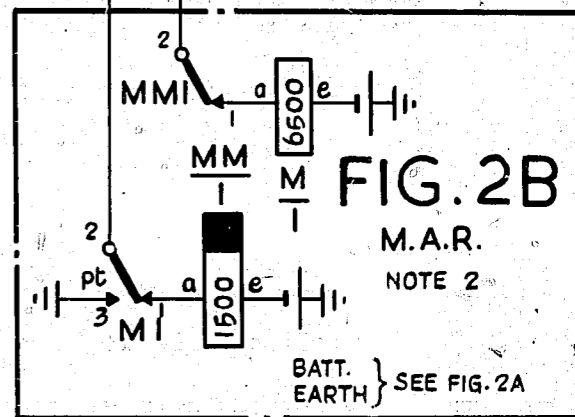


FIG. 2A M.A.R.

1 PER TEST SELECTOR



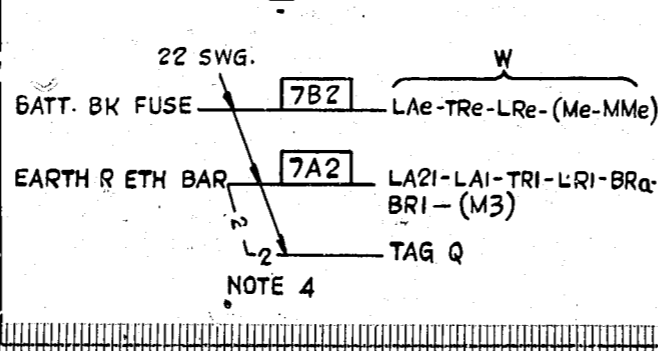
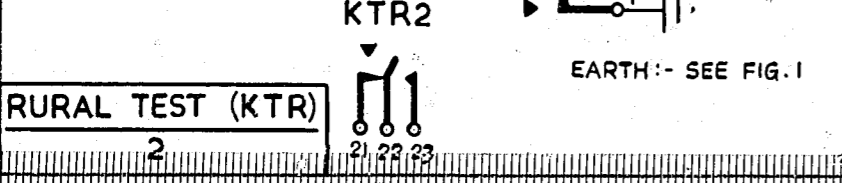
TO TEST SEL'R. DIRECT OR VIA M.D.F. (WHEN SPEC'D) OR TO SWITCHING CONTROL CCT. OR TO JUNCTION TO REMOTE EXCH VIA. MDF.



- NOTES:-**
1. FUSING :- 1.5A FIG. 1
1.5A FIGS. 2A & 2B
 2. FIG. 2B IS REQD. ONLY WHEN TEST SELECTOR IS FITTED AT REMOTE EXCHANGE
 3. LEAD 'E' IS REQD. ONLY WHEN CCT. IS CONNECTED TO LOCAL SWITCHING CONTROL CIRCUIT
 4. WHEN RURAL LINE TEST FACILITIES ARE SPEC'D. PROVIDE FIG. 3 & CONNS. SHOWN-1-1- & OMIT CONNS SHOWN - 2-2-
 5. ALL WIRING TO BE 25 SWG UNLESS OTHERWISE SPECIFIED
 6. ∅ FOR WIRING SEE GBW 10690 OR EQUIV.

FIG. 3 RURAL LINE TEST CIRCUIT

1 PER TEST SELECTOR (WHEN SPEC'D)
NOTE 4



TEST RACK			
LINES TO TEST SELECTOR			
AMENDMENT PARTICULARS		ISSUE DATE	APP'D.
N.Z.P.O.		26.6.64	D.B.H.
DRAWN		CHECKED	WIRING CIRCUIT
SIZE S		50V	E
GBW 10481			