

FIG. 4A

O/G 3 WIRE CIRCUITS

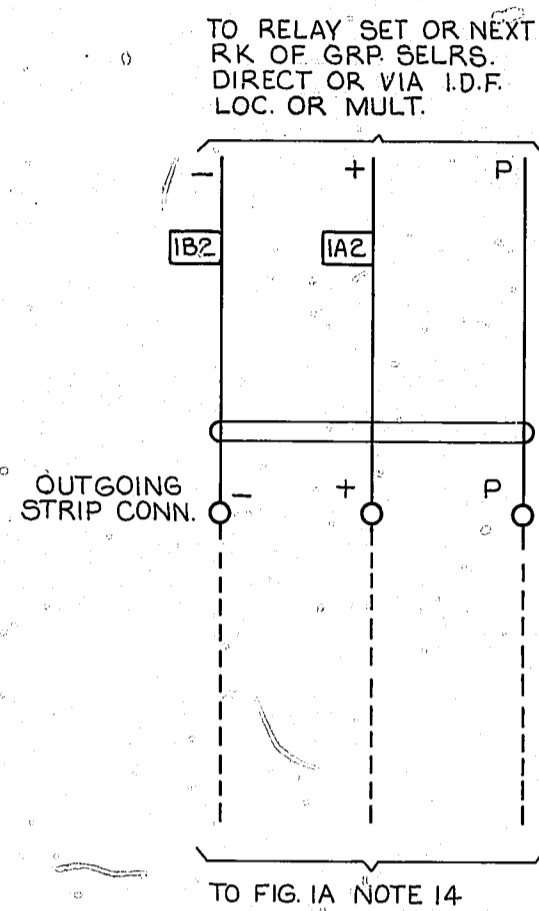


FIG. 4B

TIE CIRCUITS BETWEEN RACKS

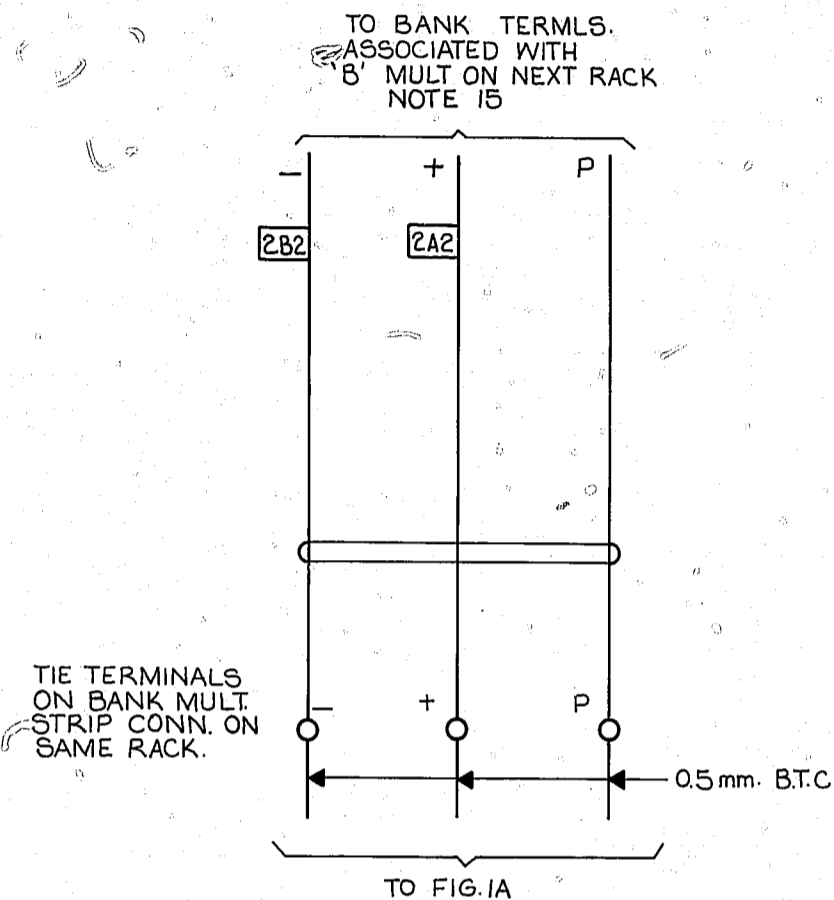


FIG. 4C

11th STEP TIE CIRCUITS BETWEEN RACKS

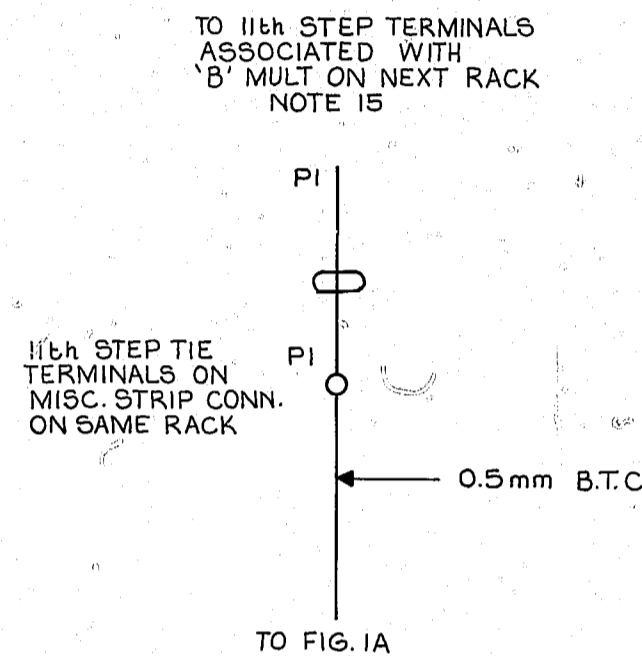


FIG. 4D

O/G 3 WIRE CIRCUITS (WITH FULL AVAILABILITY)

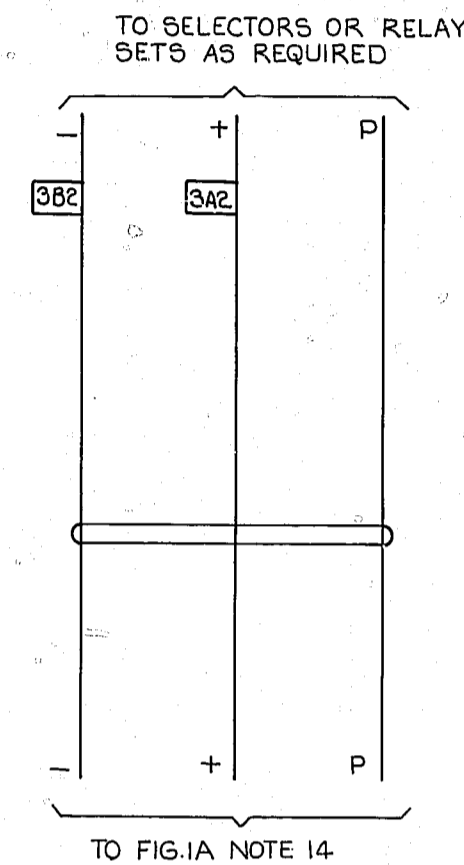


FIG. 4E

O/G 5 WIRE CIRCUIT

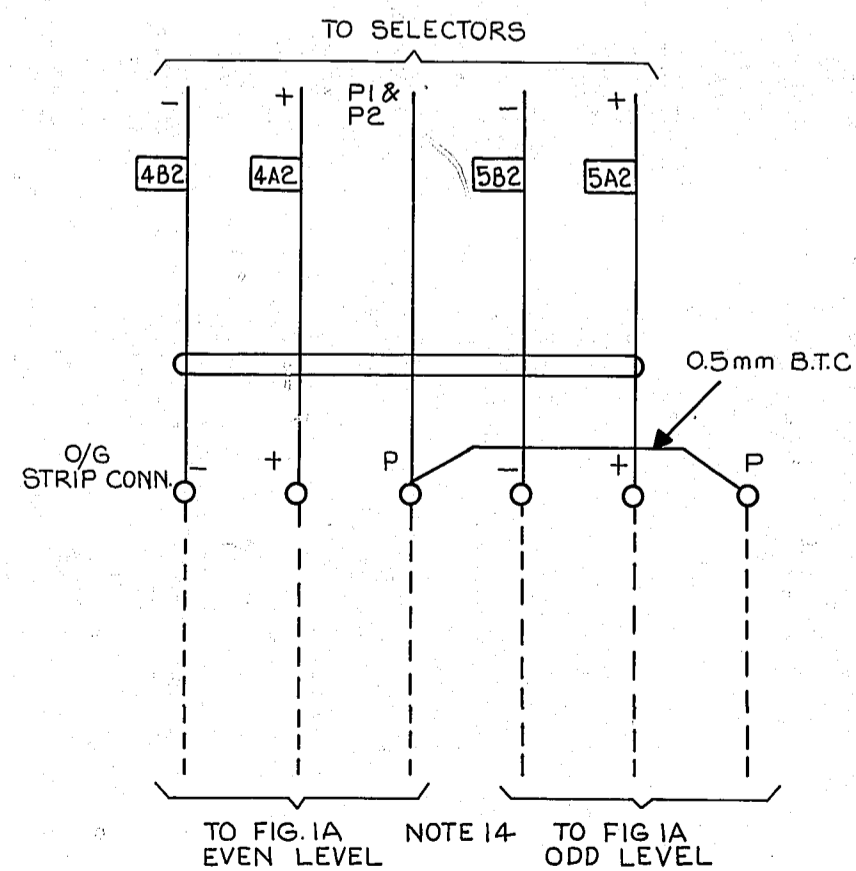
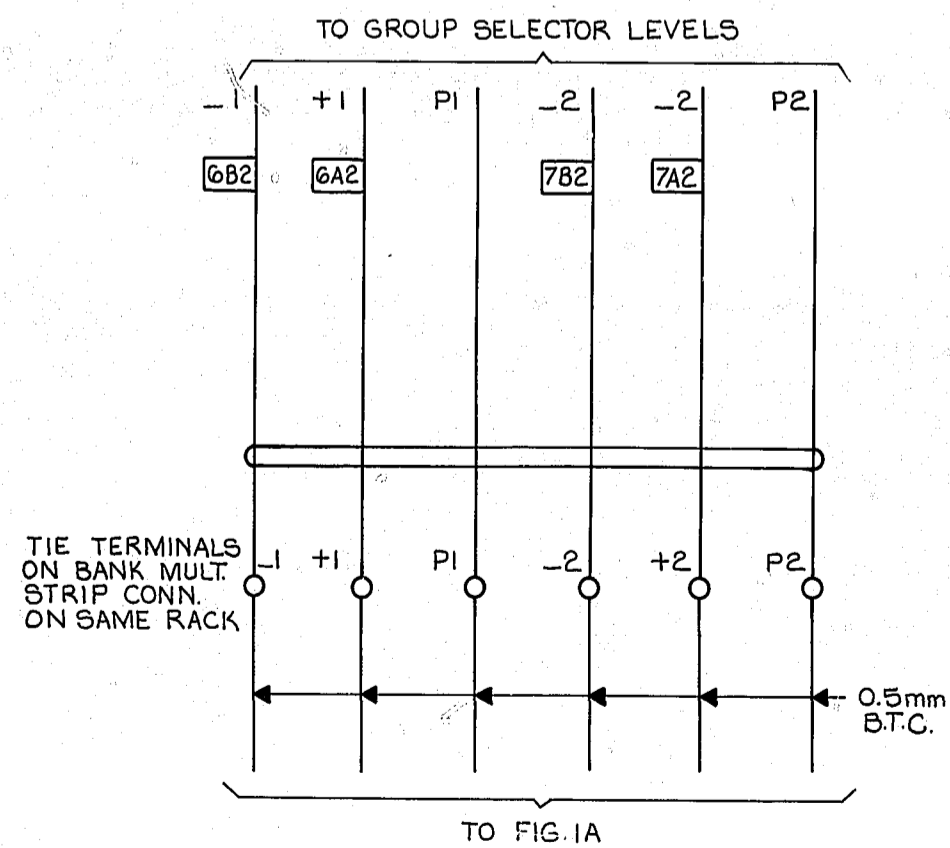


FIG. 4F

TIE CIRCUITS D.S.R TO GROUP SELECTOR LEVELS



PROOF

50V H

2B	3-5-84	RRR	AJB	424-59	JO	606	NO CHANGE	SHT 1 AMD.
2A	28.10.80	A.G.	17/17152				RETRACED & METRICATED.	
2	27-1-71		4977		BSH		NO CHANGE	SHT 1 AMD
1	13-4-70		21920		R.W.			

FOR NOTES SEE SHEET 1

DISCRIMINATING SELECTOR  
 REPEATER REGULAR & PARTY LINE  
 WITH GRADING FACILITY  
 200 OUTLET  
 2000 TYPE

ISS DATE	DEL	DC	ORDER	CKD	APD	CHANGE
DRN S.S. SECT	CKD	ORIGIN S.S. SECT				
TCD A.G.	APPD	STANDARD ATW22001				
NZPO ENGINEER-IN-CHIEF, WELLINGTON						
SHT 2 OF 1		GBW 10424				
SIZE A2						

UD 236

