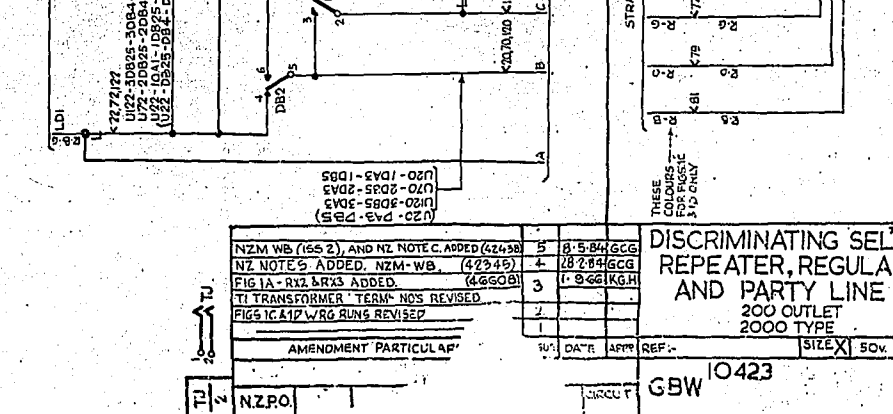
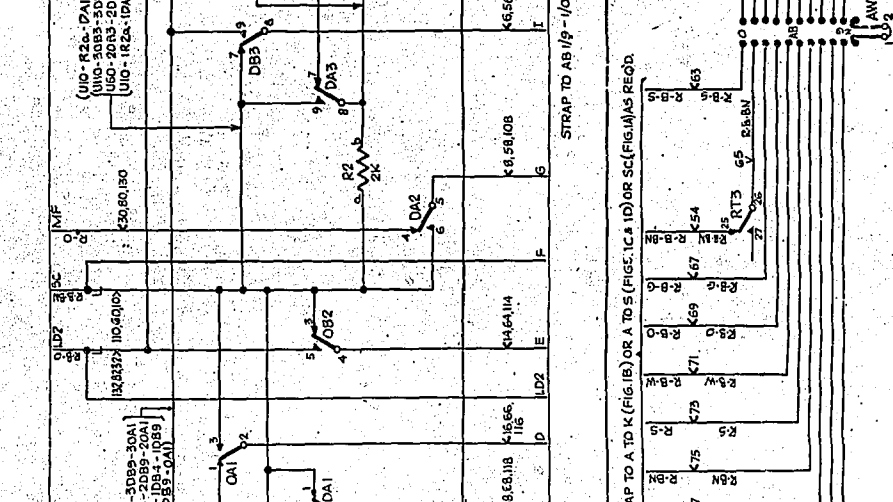
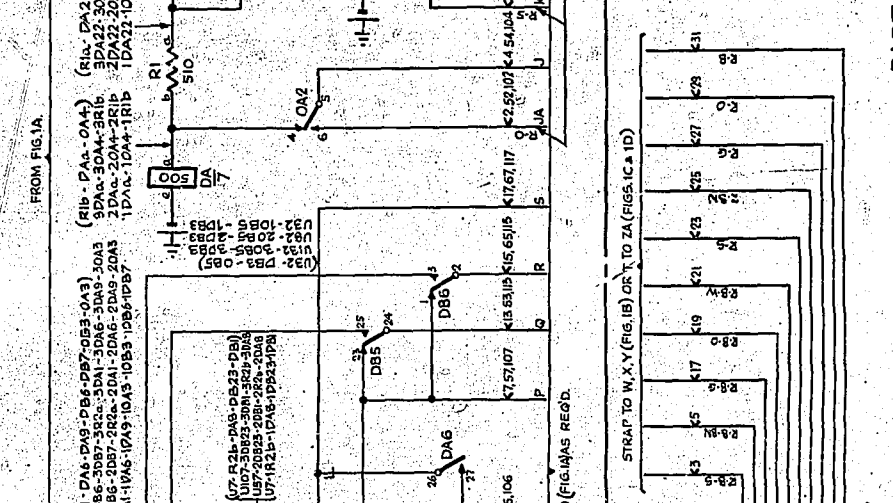
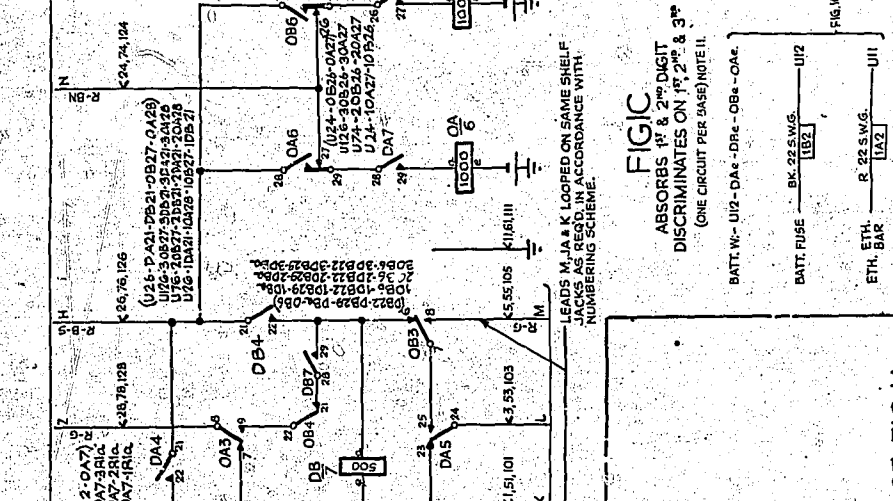
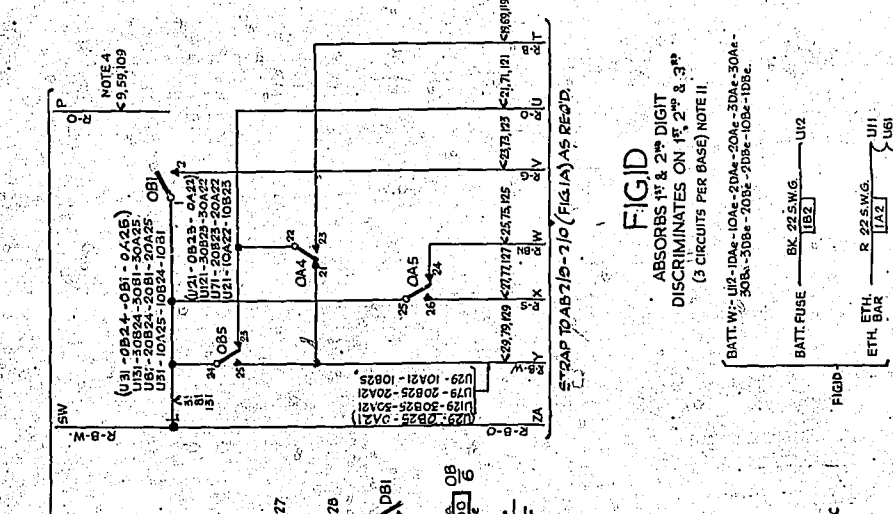
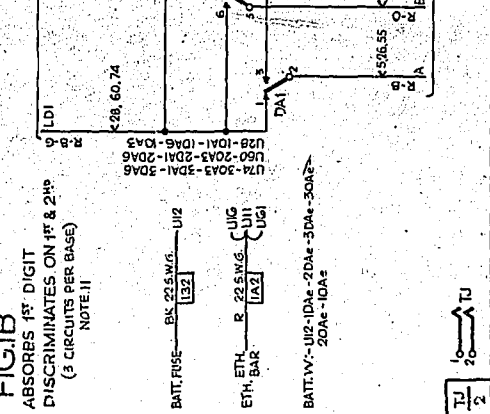
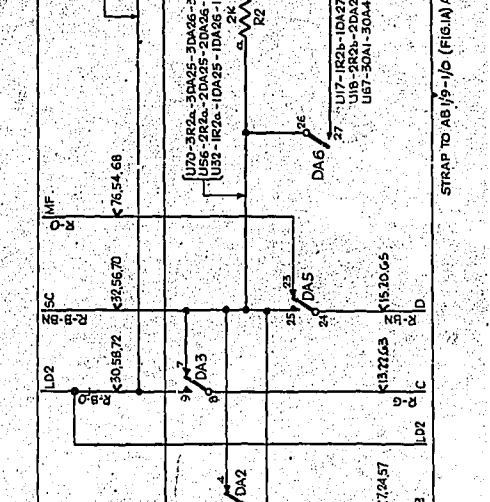
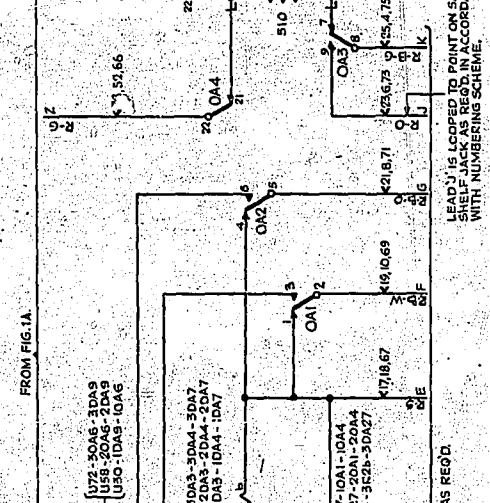
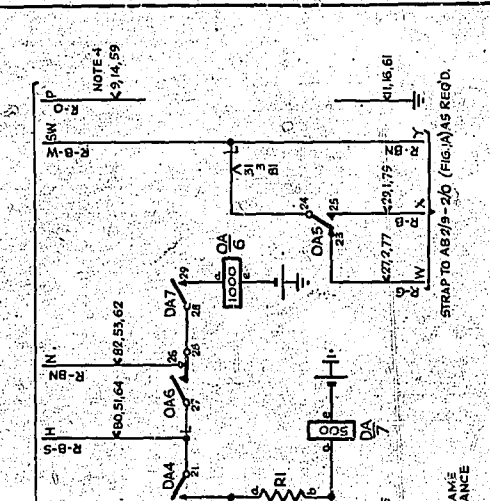
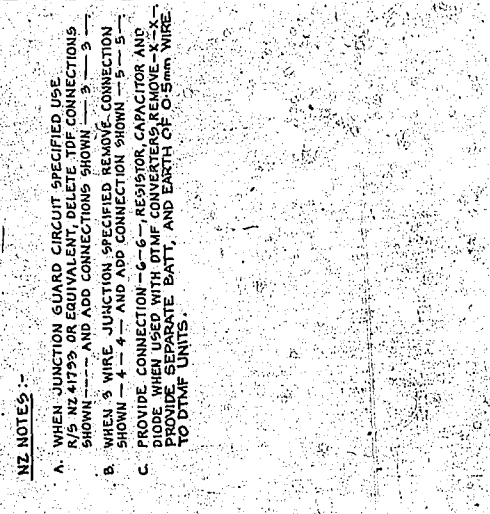
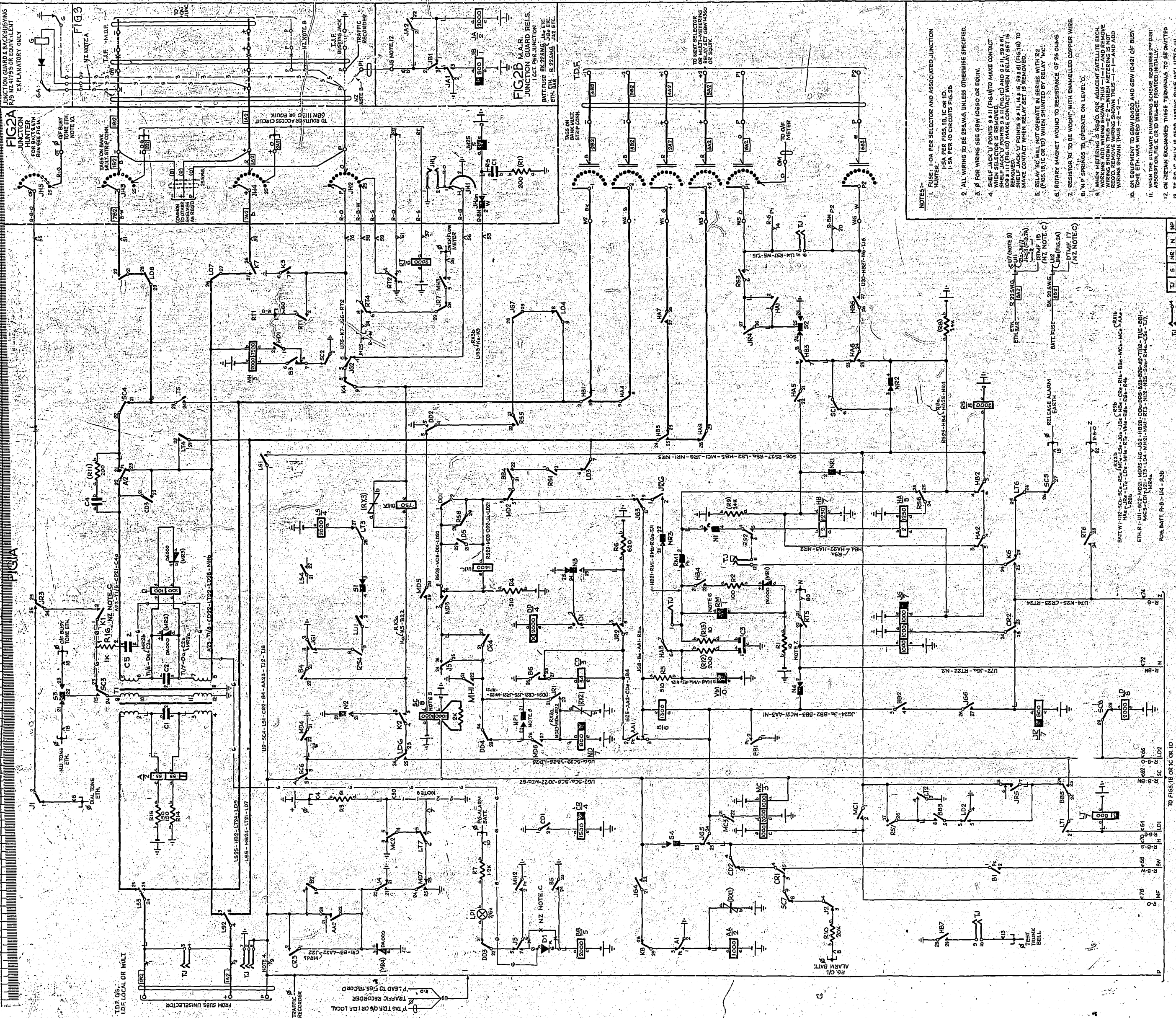


0 5 10 15 20 25 30 35 40 45 50 55 60  
CENTIMETRES



**NOTES:**  
 1. FUSE: 1 ON PER SELECTOR AND ASSOCIATED JUNCTION 1.5A PER FIGS. 1B, 1C OR 1D.  
 1.5A PER 10 CIRCUITS FIG. 2B.  
 2. ALL WIRING TO BE 25A.W.G. UNLESS OTHERWISE SPECIFIED.  
 3.  $\phi$  FOR WIRING USE GBW 10A50 OR EQUIV.  
 4. SHELF JACK 'U' POINTS 9 & 11 (FIG. 10) AND 9 & 11, 59 & 61 (FIG. 11) (FIG. 10) MAKE CONTACT WHEN RELAY SET IS OPERATED.  
 5. RELAY 'K' WILL NOT OPERATE IN SERIES WITH 'R2' (FIGS. 1B, 1C OR 1D) WHEN SHUNTED BY RELAY 'K'.  
 6. ROTARY MAGNET VOLTAGE TO RESISTANCE OF 25 OHMS.  
 7. RESISTOR 'R1' TO BE WOUND WITH ENAMELLED COPPER WIRE.  
 8. 'WY' SPRINGS TO OPERATE ON LEVEL 'C'.  
 9. WHEN METERING IS REQUIRED FOR ADJACENT SATELLITE SWITCH, WIRING SHOULD BE AS SHOWN IN FIG. 2-2-1 WHEN METERING IS NOT REQUIRED.  
 10. ON EQUIPMENT TO BE WOUND AND GBW 10A21 OF BUSY TONE 17A WIRE DIRECT.  
 11. WHEN THE ULTIMATE NUMBERING SCHEME REQUIRES 2ND DIRT ASSIGNMENT, FIG. 1C OR 1D WILL BE PROVIDED INITIALLY.  
 12. ON CIPHER EXCHANGES THESE TERMINALS TO BE OMITTED.  
 13. IF FIG. 1C ONLY IS USED, WIRING RUNS INCLUDED IN BRACKETS ARE TO BE USED.

**FIG 1B NOTES:**  
 A. WHEN JUNCTION GUARD CIRCUIT SPECIFIED USE 1/16" NZ 47759 OR EQUIVALENT, DELETE TDF CONNECTIONS SHOWN AND ADD CONNECTIONS SHOWN.  
 B. WHEN 5 WIRE JUNCTION SPECIFIED REMOVE CONNECTION TO SHELF JACK 'U' POINTS 9 & 11, 59 & 61 (FIG. 10) AND 9 & 11, 59 & 61 (FIG. 11) (FIG. 10) MAKE CONTACT WHEN RELAY SET IS OPERATED.  
 C. PROVIDE CONNECTION TO 6-C RESISTOR, CAPACITOR AND DIODE WHEN USED WITH OTHER CONVERTERS REMOVE 5-C TO 20A WIRE.  
 D. DATE: 1952

**FIG 1C NOTES:**  
 A. WHEN JUNCTION GUARD CIRCUIT SPECIFIED USE 1/16" NZ 47759 OR EQUIVALENT, DELETE TDF CONNECTIONS SHOWN AND ADD CONNECTIONS SHOWN.  
 B. WHEN 5 WIRE JUNCTION SPECIFIED REMOVE CONNECTION TO SHELF JACK 'U' POINTS 9 & 11, 59 & 61 (FIG. 10) AND 9 & 11, 59 & 61 (FIG. 11) (FIG. 10) MAKE CONTACT WHEN RELAY SET IS OPERATED.  
 C. PROVIDE CONNECTION TO 6-C RESISTOR, CAPACITOR AND DIODE WHEN USED WITH OTHER CONVERTERS REMOVE 5-C TO 20A WIRE.  
 D. DATE: 1952

**FIG 1D NOTES:**  
 A. WHEN JUNCTION GUARD CIRCUIT SPECIFIED USE 1/16" NZ 47759 OR EQUIVALENT, DELETE TDF CONNECTIONS SHOWN AND ADD CONNECTIONS SHOWN.  
 B. WHEN 5 WIRE JUNCTION SPECIFIED REMOVE CONNECTION TO SHELF JACK 'U' POINTS 9 & 11, 59 & 61 (FIG. 10) AND 9 & 11, 59 & 61 (FIG. 11) (FIG. 10) MAKE CONTACT WHEN RELAY SET IS OPERATED.  
 C. PROVIDE CONNECTION TO 6-C RESISTOR, CAPACITOR AND DIODE WHEN USED WITH OTHER CONVERTERS REMOVE 5-C TO 20A WIRE.  
 D. DATE: 1952

**FIG 1E NOTES:**  
 A. WHEN JUNCTION GUARD CIRCUIT SPECIFIED USE 1/16" NZ 47759 OR EQUIVALENT, DELETE TDF CONNECTIONS SHOWN AND ADD CONNECTIONS SHOWN.  
 B. WHEN 5 WIRE JUNCTION SPECIFIED REMOVE CONNECTION TO SHELF JACK 'U' POINTS 9 & 11, 59 & 61 (FIG. 10) AND 9 & 11, 59 & 61 (FIG. 11) (FIG. 10) MAKE CONTACT WHEN RELAY SET IS OPERATED.  
 C. PROVIDE CONNECTION TO 6-C RESISTOR, CAPACITOR AND DIODE WHEN USED WITH OTHER CONVERTERS REMOVE 5-C TO 20A WIRE.  
 D. DATE: 1952

**FIG 1F NOTES:**  
 A. WHEN JUNCTION GUARD CIRCUIT SPECIFIED USE 1/16" NZ 47759 OR EQUIVALENT, DELETE TDF CONNECTIONS SHOWN AND ADD CONNECTIONS SHOWN.  
 B. WHEN 5 WIRE JUNCTION SPECIFIED REMOVE CONNECTION TO SHELF JACK 'U' POINTS 9 & 11, 59 & 61 (FIG. 10) AND 9 & 11, 59 & 61 (FIG. 11) (FIG. 10) MAKE CONTACT WHEN RELAY SET IS OPERATED.  
 C. PROVIDE CONNECTION TO 6-C RESISTOR, CAPACITOR AND DIODE WHEN USED WITH OTHER CONVERTERS REMOVE 5-C TO 20A WIRE.  
 D. DATE: 1952

**FIG 1G NOTES:**  
 A. WHEN JUNCTION GUARD CIRCUIT SPECIFIED USE 1/16" NZ 47759 OR EQUIVALENT, DELETE TDF CONNECTIONS SHOWN AND ADD CONNECTIONS SHOWN.  
 B. WHEN 5 WIRE JUNCTION SPECIFIED REMOVE CONNECTION TO SHELF JACK 'U' POINTS 9 & 11, 59 & 61 (FIG. 10) AND 9 & 11, 59 & 61 (FIG. 11) (FIG. 10) MAKE CONTACT WHEN RELAY SET IS OPERATED.  
 C. PROVIDE CONNECTION TO 6-C RESISTOR, CAPACITOR AND DIODE WHEN USED WITH OTHER CONVERTERS REMOVE 5-C TO 20A WIRE.  
 D. DATE: 1952

**FIG 1H NOTES:**  
 A. WHEN JUNCTION GUARD CIRCUIT SPECIFIED USE 1/16" NZ 47759 OR EQUIVALENT, DELETE TDF CONNECTIONS SHOWN AND ADD CONNECTIONS SHOWN.  
 B. WHEN 5 WIRE JUNCTION SPECIFIED REMOVE CONNECTION TO SHELF JACK 'U' POINTS 9 & 11, 59 & 61 (FIG. 10) AND 9 & 11, 59 & 61 (FIG. 11) (FIG. 10) MAKE CONTACT WHEN RELAY SET IS OPERATED.  
 C. PROVIDE CONNECTION TO 6-C RESISTOR, CAPACITOR AND DIODE WHEN USED WITH OTHER CONVERTERS REMOVE 5-C TO 20A WIRE.  
 D. DATE: 1952

**FIG 1I NOTES:**  
 A. WHEN JUNCTION GUARD CIRCUIT SPECIFIED USE 1/16" NZ 47759 OR EQUIVALENT, DELETE TDF CONNECTIONS SHOWN AND ADD CONNECTIONS SHOWN.  
 B. WHEN 5 WIRE JUNCTION SPECIFIED REMOVE CONNECTION TO SHELF JACK 'U' POINTS 9 & 11, 59 & 61 (FIG. 10) AND 9 & 11, 59 & 61 (FIG. 11) (FIG. 10) MAKE CONTACT WHEN RELAY SET IS OPERATED.  
 C. PROVIDE CONNECTION TO 6-C RESISTOR, CAPACITOR AND DIODE WHEN USED WITH OTHER CONVERTERS REMOVE 5-C TO 20A WIRE.  
 D. DATE: 1952

PART OF FIG. 1A

DISCRIMINATING SEL'R. REPEATER, REGULAR AND PARTY LINE  
 200 OUTLET  
 2000 TYPE  
 GBW 10A23