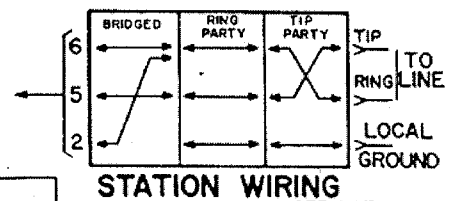
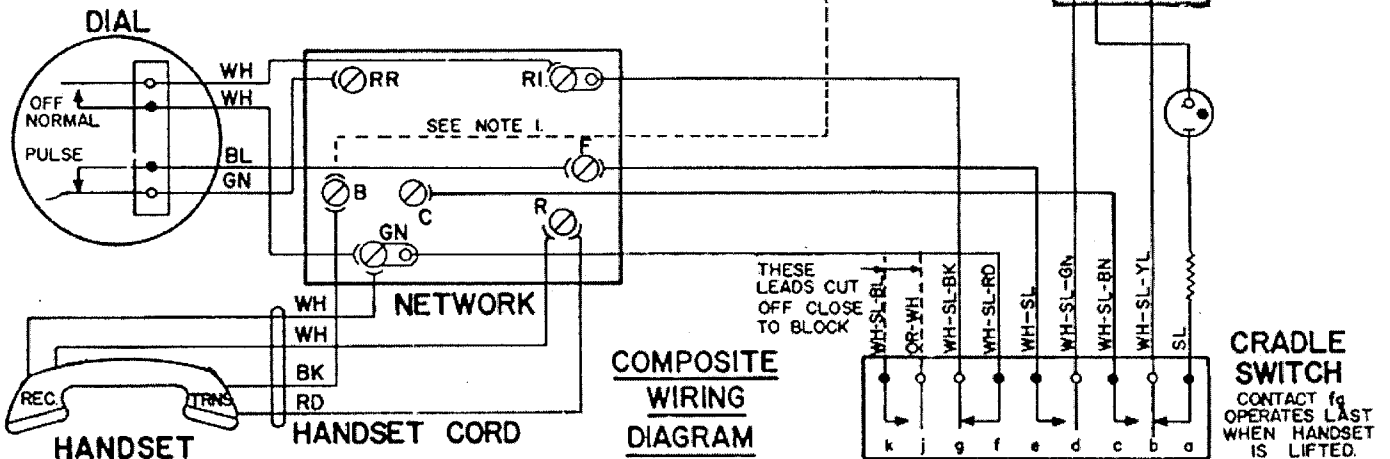


6-Conductor Mounting Cord:
 Yellow and black leads connected
 in parallel



MOUNTING CORD
 SEE NOTES 1 AND 2

For Manual Service:
 Replace dial with dummy
 plug and transfer WH-SL
 cradle switch lead from
 F to RR on network.



CIRCUIT DIAGRAM
 (INSTRUMENT ONLY)

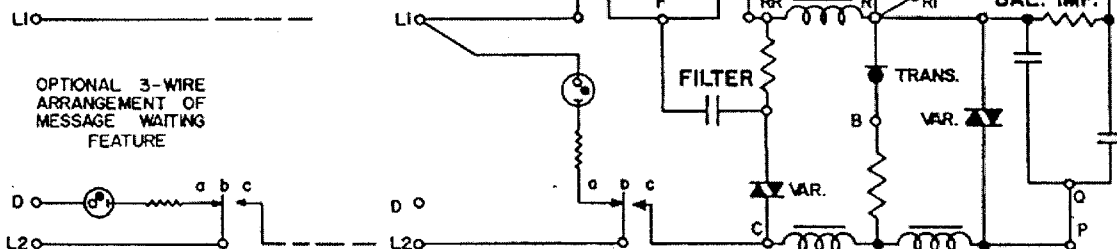


Fig. 2 DIAGRAMS 703--(LR)37- TELEPHONE AND
 703--(LR)38- TELEPHONE