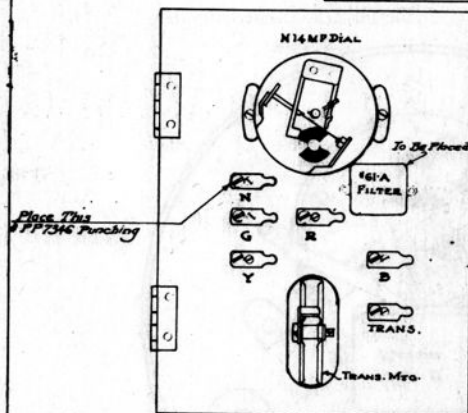
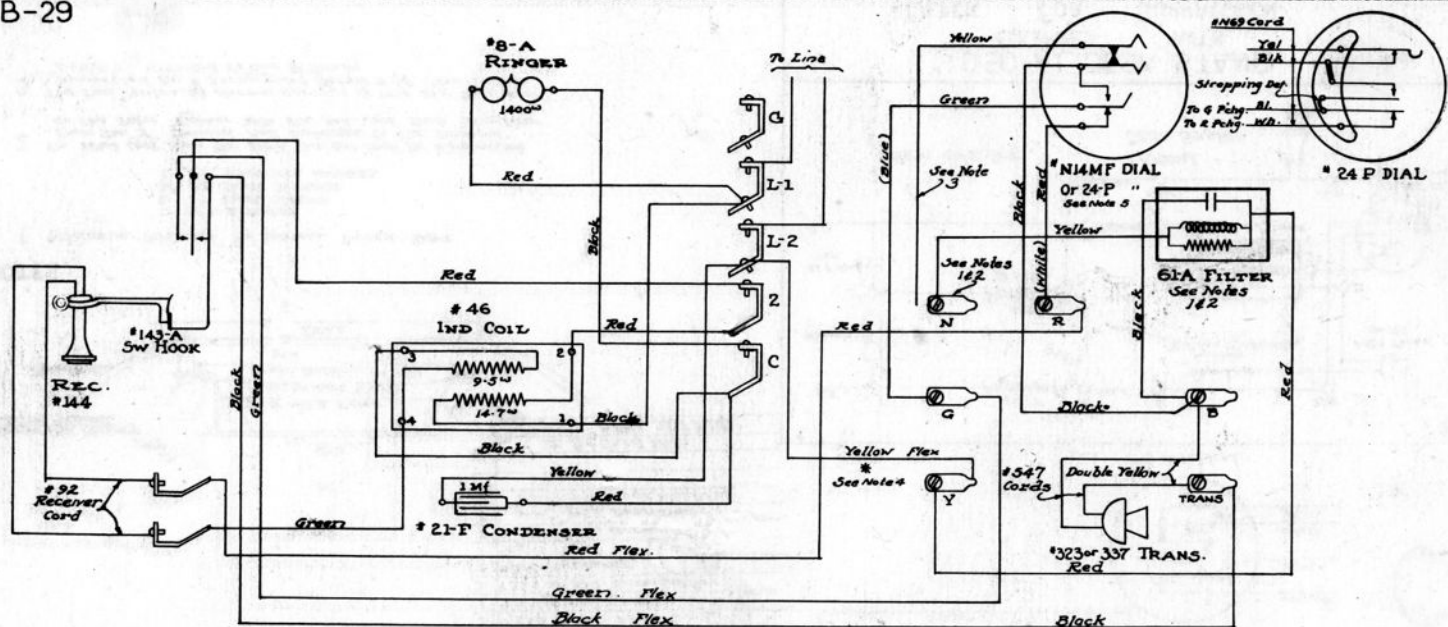


71-B-29

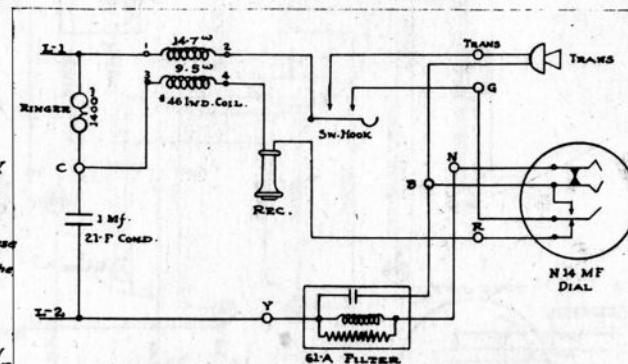
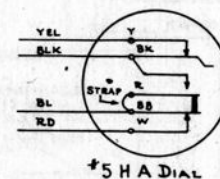


- #1293-GP WALL SET**
Consisting of
- 1 #N14 MF Dial
 - 1 #24-P Dial (With Strapping Detail)
 - 1 #N69 Dial Cord (With 24-P Dial Only)
 - 2 #547 Transmitter Cords
 - 1 #92-Rec. Cord
 - 1 #325 or 337 Transmitter
 - 1 #144 Receiver
 - 1 #61-A Filter
 - 1 PP #6431 Screw
 - 1 PP #7346 Punching
 - 2 PP #2217 RH Screws
 - 1 #21-F Condenser
 - 1 #8-A Ringer
 - 1 #46 Induction Coil
 - 1 #143-A Switchhook

3 The Yellow Lead From The Dial Shall Be Disconnected From The Bottom Terminal In This Vertical Row And Shall Be Connected To The New Terminal

4 In The Converted 1293 GP Sets These Leads Are Through The Door Hinges The Arrangement of Punchings On The Door And The Code Colors of Wires Running To The Door May Not Be Standard In That Case

5 The Two Centre 'off Normal Springs' of The 24-P Dial Are Connected By A Strapping Detail And The Green Lead Is Attached To One of Them



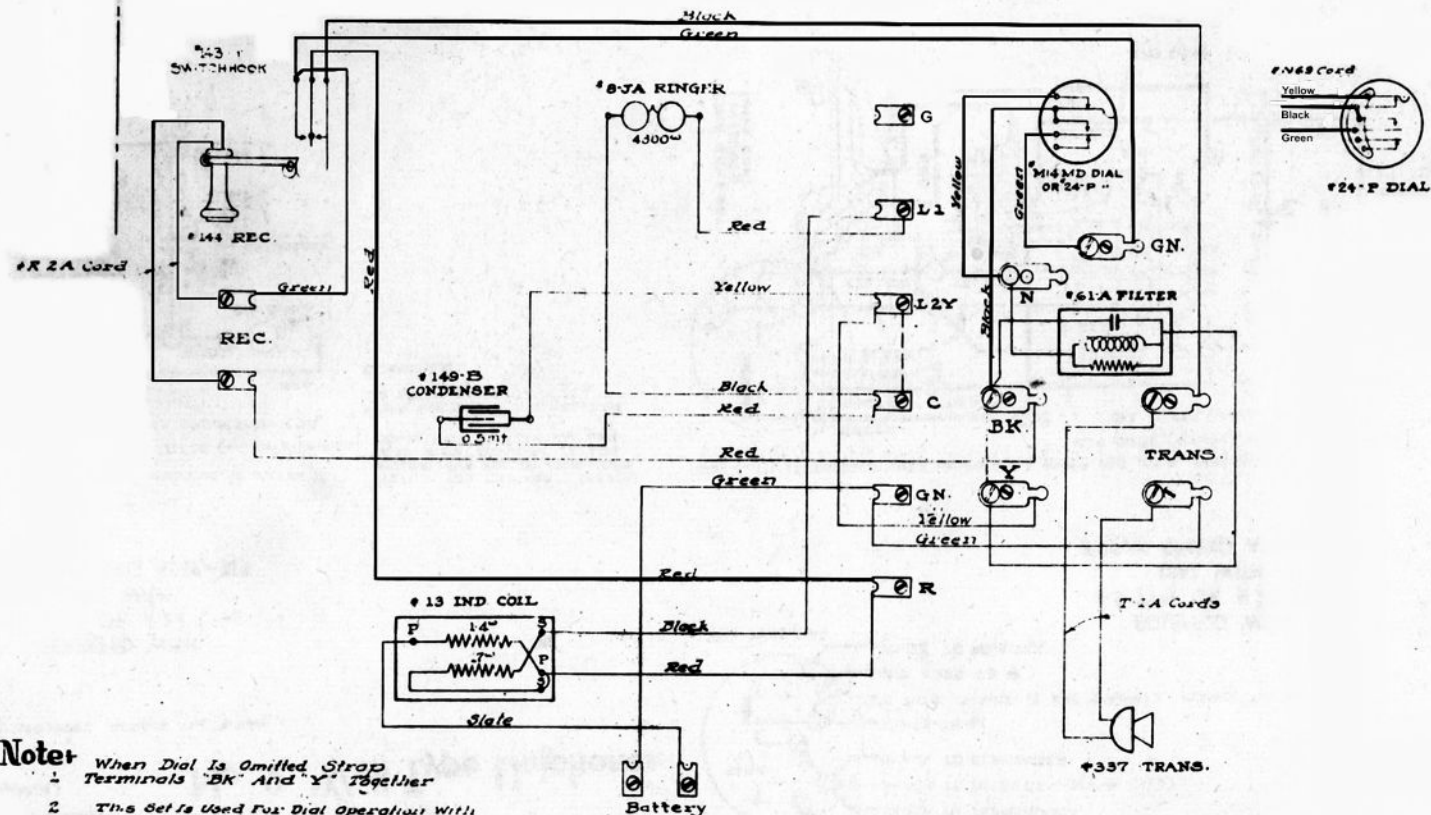
#1293 G-P WALL SET
EQUIPPED WITH
FILTER FOR SUPPRESSION
OF DIAL INTERFERENCE TO RADIO

NOTES:

- 1 Material Required To Install Filter Equipment

- 1 61-A Filter
- 1 PP #6431 Screw
- 1 PP #7346 Punching
- 2 PP #2217 RH Screws

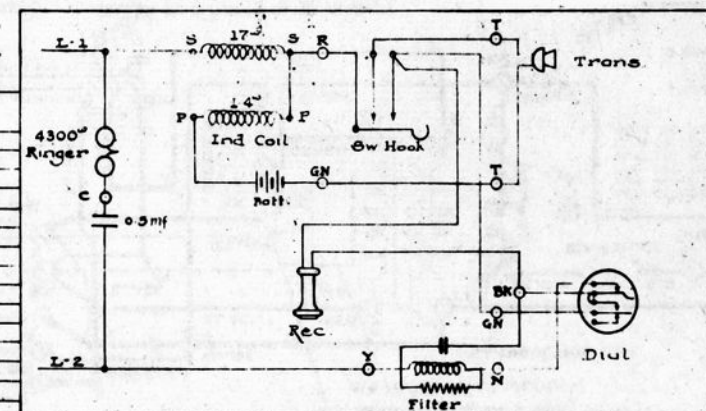
- 2 Drill Holes As Required Using A #30 Drill For Mounting Screws And A #30 Drill For Terminal Or Punching

**Note:**

- When Dial Is Omitted, Strap
Terminals "BK" And "Y" Together
- 1 This Set Is Used For Dial Operation With Loop Dialing And Local Battery Transmission
 - 2 Three #6 Dry Cells In N1A Battery Box To Be Used, As The Battery For This Set
 - 3 The #1293 GY Set Is To Be Equipped With A #8-JA Ringer, #149-B Condenser And #13 Induction Coil
 - 4 See #71-B-29 For Method Of Mounting Filter On Set
 - 5 Dotted lines are peculiar to Spruce Hill Lake installation only.

1	#1293-GY SUB-SET
	Consisting of
1	#8-JA Ringer
1	#149-B Condenser
1	#13 Induction Coil
1	#143-Y Switchhook
1	#144 Receiver
1	#R2A Cord
1	#337 Transmitter
2	#T1A Cords
1	#61-A Filter
1	PP# 6431 Screw
1	PP# 7366 Punching
2	PP# 2217 RH Screws
	ASSOCIATED APPARATUS
1	#24 P Or N14 M Dial
1	#N65 Dial Cord
3	#6 Dry Cells
1	#N1A Battery Box

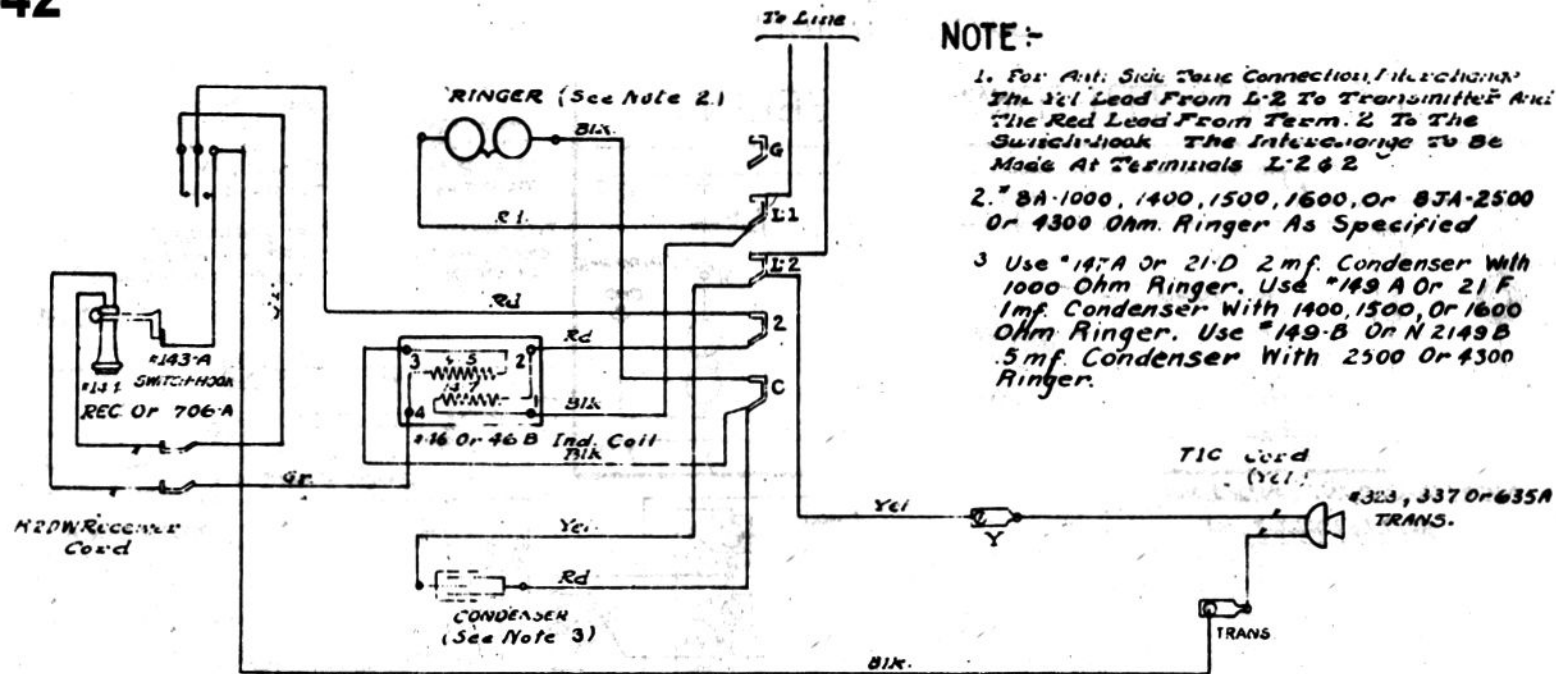
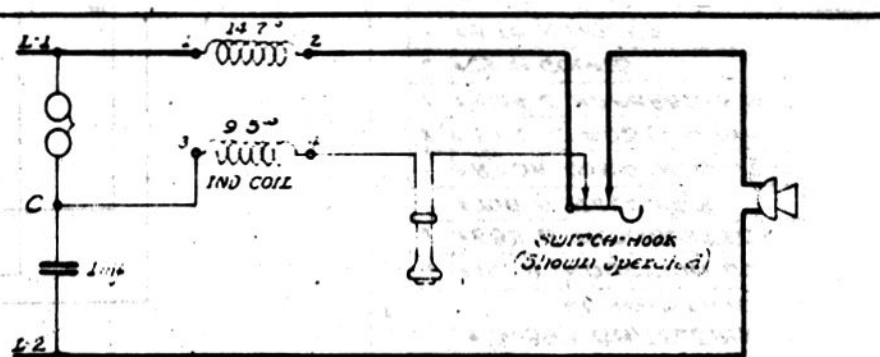
APPARATUS
ENGINEERING INFORMATION



N 1293 - GY SUB-SET.

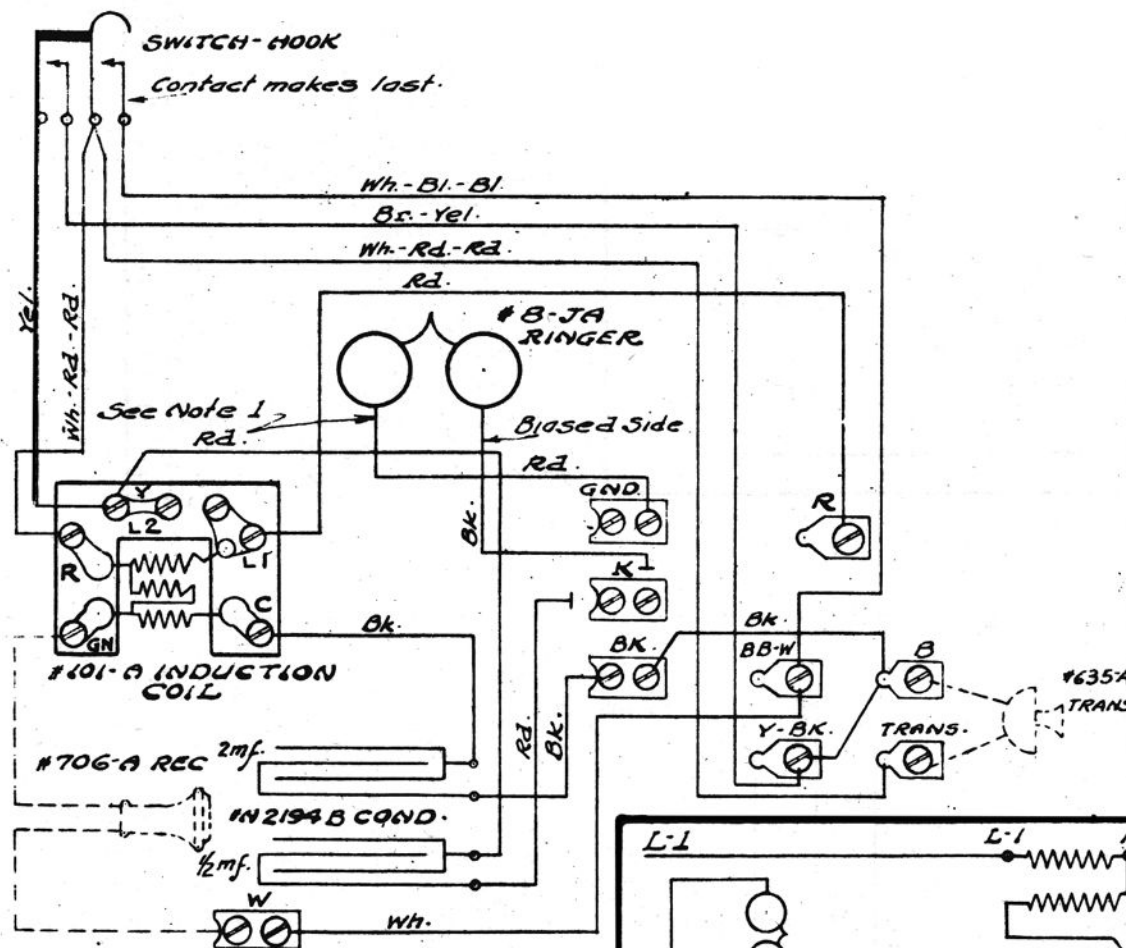
CIRCUIT DIAGRAM
LOCAL BATTERY LOOP DIALING WALL SET

71-Y-42

[illegible]

#1293-A WALL TELEPHONE SET
MANUAL SERVICE

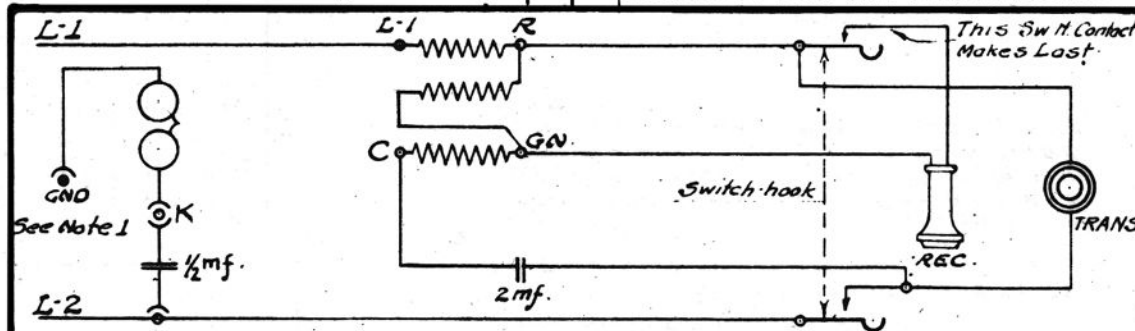
71-Y-45



# N1393 BA TELEPHONE SET CONSISTING OF	
1	#101-A INDUCTION COIL
1	#1635-A TRANSMITTER
1	#706-A RECEIVER
1	#R20W CORD (Receiver)
2	#T-1-C CORDS (Transmitter) 6' Long
1	#N104-C APPARATUS BLANK
2	#29-A GONGS
1	#8JA RINGERS
1	#N143-AK SWITCH-HOOK
1	#N2194 B CONDENSER
1	#1635-A TRANSMITTER BRACKET
APPARATUS ENGINEERING INFORMATION.	

NOTES:

- 1 When Ordered for Metallic Ringing Remove Red Ringer Lead From GND Term. & Connect To IND.COIL Term. L-1
- 2 The N1393 BA Set shall Be Used Where A Wall Set Is Required And Where The Loop Is Too Long for Satisfactory Transmission With The Standard Wall Set.



N1393 - BA WALL TELEPHONE SET

FOR MANUAL SERVICE ON EXTRA LONG LOOPS
COMMON BATTERY