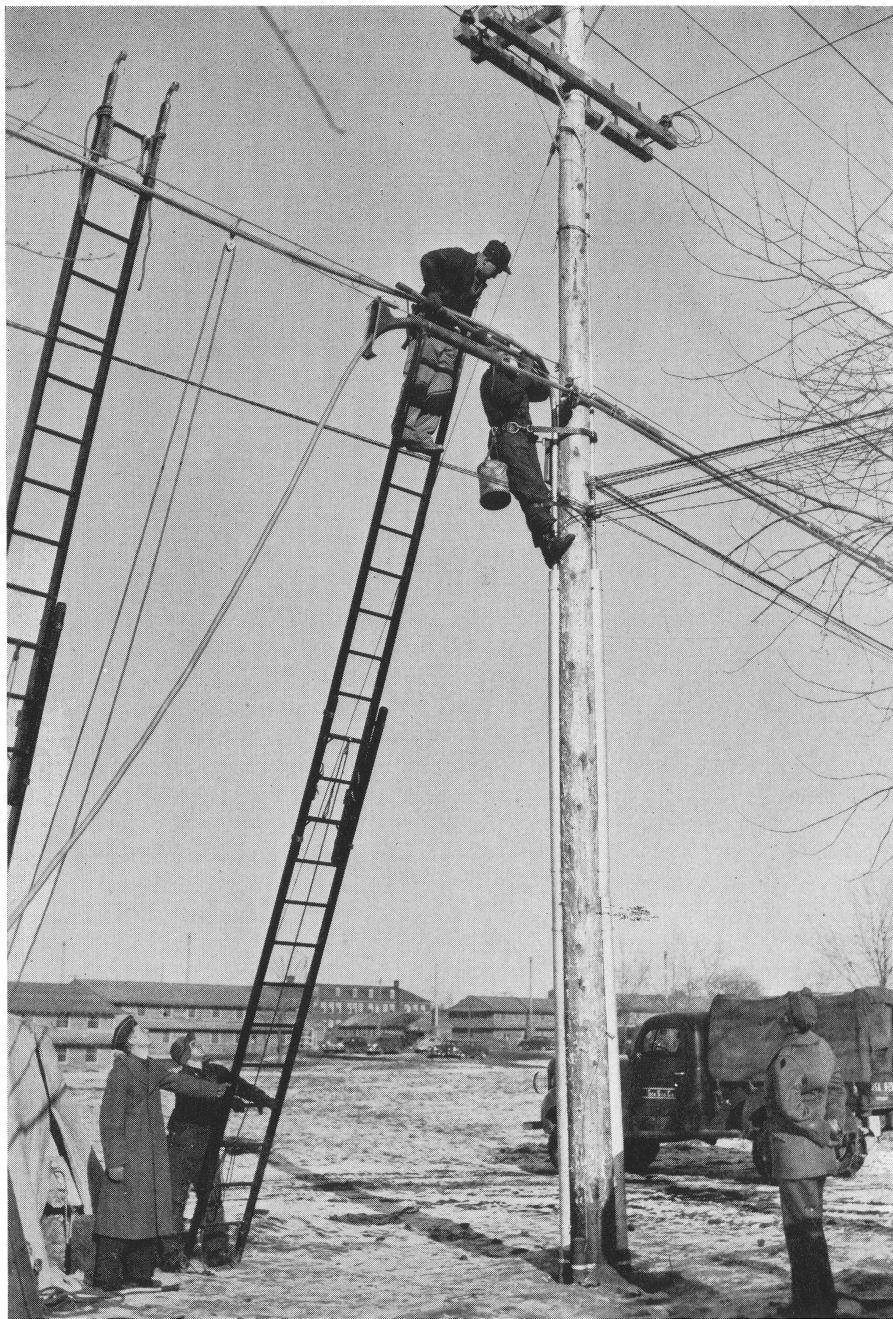


At Fort Custer, near Battle Creek, a Michigan Bell crew installs a new 303-pair cable

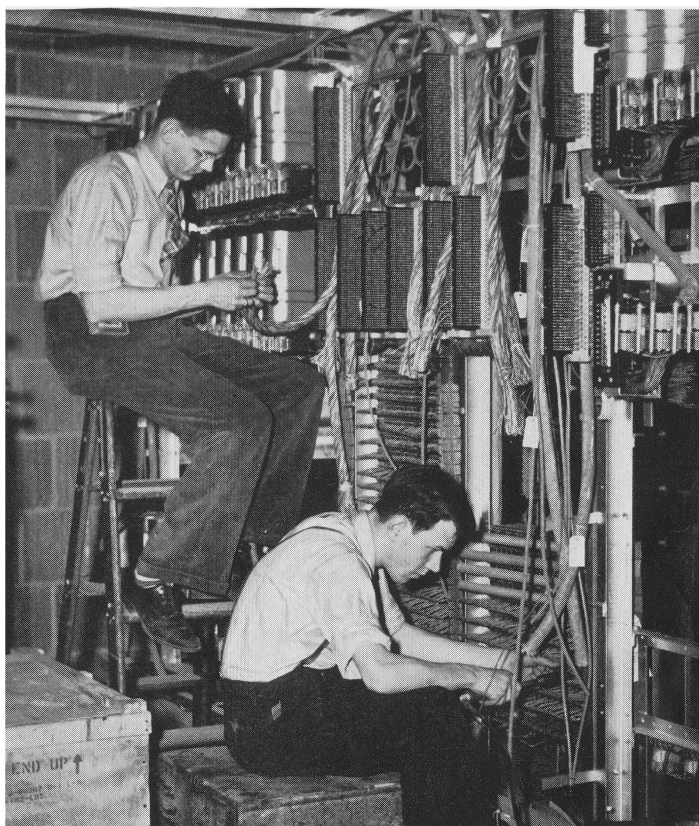


NATIONAL DEFENSE *and the* BELL SYSTEM

Telephone companies are rapidly putting in new poles, cables, switch-boards, to care for the many additional needs for service occasioned by the National Defense Program. Works and warehouses of Western Electric are meeting difficult schedules, in order that construction crews may receive a constant flow of materials. Throughout the United States the work goes forward as shown in these pictures from widely scattered places



On their way to Sacramento, this Long Lines crew plows in cable across Northwestern Bell territory to increase the security of transcontinental circuits



Greatly expanded activity at an arms factory in Connecticut required the installation of this new PBX by The Southern New England Telephone Company



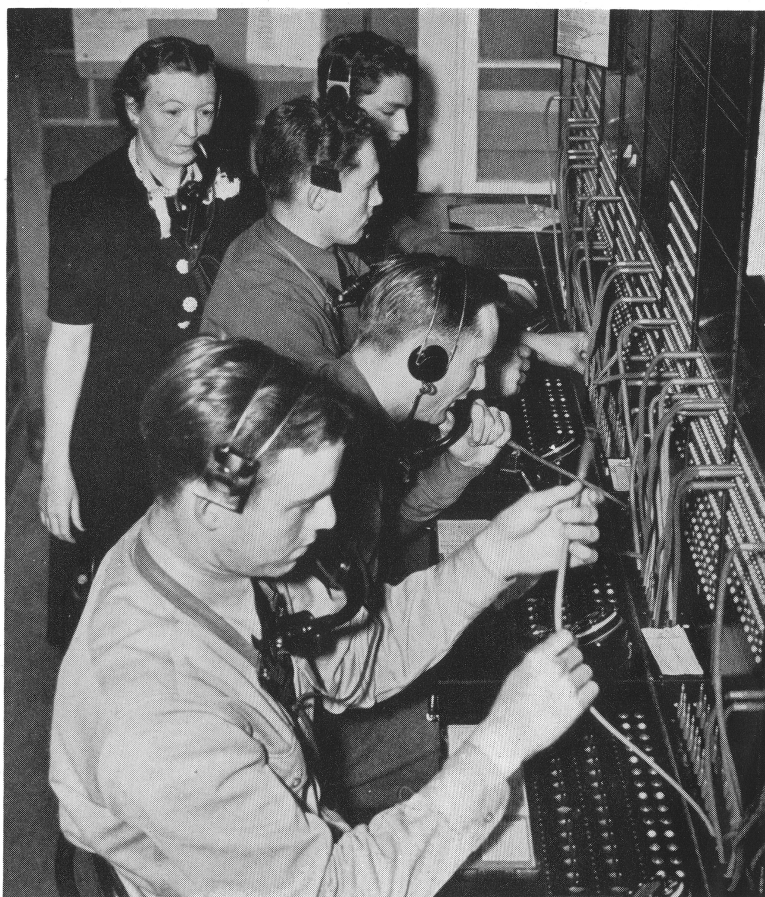
As Illinois Bell men guard the cables, a metal building housing a dial PBX is lifted to a rooftop without interrupting service



Construction of a new Army camp required that a telephone cable be moved to a new position. New England Bell splicers are here shown joining two sections of the cable in its new location along the Cape Cod Canal



After fire had destroyed the communication center at Norfolk Naval Base on the morning of January 26, 1941, a temporary switchboard was installed by The Chesapeake and Potomac Telephone Company. This photograph was taken three days after the fire



Army telephone men are being trained by a Southwestern Bell instructor to operate this four-position switchboard at Fort Sill



The expansion required for telephone service to an Army camp is well illustrated by the history of the Mt. Holly, New Jersey, Central Office. Twelve positions have been added to the original ten and twelve more will shortly be in service



Defense preparations have made it necessary for the Southern California Telephone Company to increase the supplies at its pole yard. Here a "handful" of poles is being unloaded from a flat car