

LOGIC* 10 Key Telephone Sets

Profits now, more profits later.

These ten-button key telephone sets have the features that will generate profits now — and the options that will generate additional profits — now and later.

Profits now from greater line handling capacity, handsome styling, universal mounting, reduced inventory, low maintenance costs.

Profits now, and later, from the options your subscribers will want to add — private handsfree conversation using a headset, or complete handsfree conversation using the LOGIC* handsfree unit.

*Trademarks of Northern Electric Company, Limited



**NORTHERN
TELECOM** 
a Northern Electric company

T9-1 · 30 · 01

LOGIC 10 Key Telephone Sets

LOGIC 10 key telephone sets have the features and the flexibility your subscribers appreciate.

With LOGIC 10 key telephone sets, your subscribers can receive, hold, transfer and originate calls on up to nine telephone lines. The lines can be all central office, all private branch exchange, or any combination desired, up to the maximum. Or if the maximum number of lines is not required, the extra keys can be used to control other service features such as add-on, or intercom, provided these services are available from the subscriber's key system. LOGIC 10 key telephone sets are handsomely styled — their contemporary design enhances even the most modern business environment. Their large, easy-to-use, self-designating keys are a pleasure to operate. The no-jam hookswitch and the third-party calling position further contribute to ease of operation. And the options let your subscribers select the features that best suit their requirements.



LOGIC 10 key telephone set equipped with headset option

*Trademarks of Northern Electric Company, Limited

LOGIC 10 key telephone sets also have the features that telephone companies appreciate.

They mount on either desk or wall. This, coupled with the use of only two basic colors (augmented by different faceplate colors), keeps inventory to a minimum. Maintenance costs are low because LOGIC 10 key telephone sets are easy to service (accessibility is exceptional), and because most of the components (dials, ringer, network, handset) are standard items with which craftsmen are already familiar. The extensive use of standard components also means that new spare parts inventories are minimized.

DIGITONE or rotary dial

All LOGIC 10 key telephone sets are available with either rotary or DIGITONE* pushbutton dials, in a color selection which will coordinate with any decor.

A simple field-activated option lets your subscribers enjoy private handsfree telephone conversations using a VENTURE 1* or other headset.

All LOGIC 10 key telephone sets contain provision for field-activation of a standard headset jack which is mounted on the side of the unit. When this feature is activated your subscribers can plug in almost any headset and enjoy all of the advantages of private, handsfree conversation. And they can alternate between headset and handset operation as desired, using the selector switch.

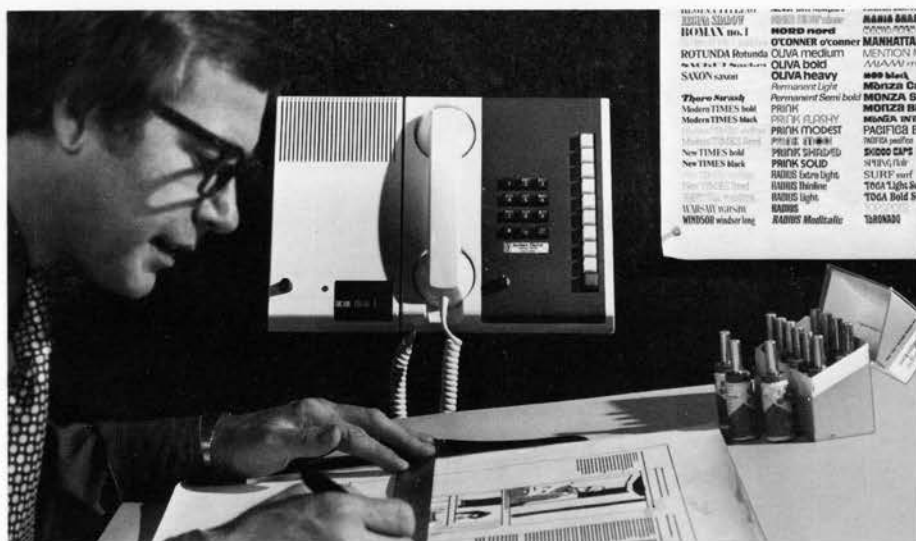
The jack and switch are supplied prewired and installed in the set. When this feature is required it can be easily put into service by making minor wiring changes involving only four leads inside the set.

Another simple field-activated option lets your subscribers enjoy completely handsfree conversation.

A LOGIC handsfree unit can be installed simply by plugging it in to any LOGIC 10 key telephone set which has been field-activated to accept it. Field modification of LOGIC 10 key telephone sets to accept the LOGIC handsfree unit is simplicity itself. No special tools are required. A socket and cable assembly which is prewired inside the set simply replaces a filler plate in the side of the housing. One end of a power cord is connected inside the telephone set to quick-connect terminals and the other end is connected to an NE-2012B transformer which plugs into any 120 V ac power outlet. The handsfree unit is plugged into the LOGIC 10 key telephone set to complete the installation. The whole process can be completed in less than five minutes.



Desk-mounted LOGIC 10 and LOGIC handsfree units



Wall-mounted LOGIC 10 and LOGIC handsfree units



LOGIC handsfree unit is installed simply by plugging it into a field-activated socket

LOGIC 10 Key Telephone Sets

Universal mounting

LOGIC 10 key telephone sets (and the handsfree unit) can be used both on a desk or wall mounted. A wall-mounting bracket is supplied with each unit.

Substantial inventory reduction

LOGIC 10 key telephone sets are available in two basic housing colors and with either rotary or DIGITONE dials. This means only four combinations need be carried in inventory. Customer color preferences are satisfied by low-cost faceplates supplied in five colors. Compared to other multikey telephone sets, LOGIC 10 key telephone sets enable a substantial inventory reduction to be achieved.

Rugged construction

LOGIC 10 key telephone sets are built to last. The base and housing are made from a tough, rugged plastic material. The faceplates are made from another strong plastic material which won't break, scratch or chip in normal use. The internal components are all standard telephone set parts which have already proved their durability through years of service.

Very compatible

LOGIC 10 key telephone sets are designed to interface with 1A1, 1A2 and 6A key telephone systems. They are compatible with a wide range of special application equipment including autodialers, automatic answering devices, impaired hearing and noisy location handsets, card dialers, voice and data couplers, etc.



Standard LOGIC 10 key telephone set

Easy to service

Access to LOGIC 10 key telephone sets is gained by first removing the faceplate (using a standard finger-wheel removal tool) and then removing the two screws which secure the housing. With the housing off, all of the internal parts are readily accessible for quick replacement. Almost all wiring is spade-tipped for fast connection to and disconnection from quick-connect terminal blocks. All wiring is in accordance with standard color codes.

Large, easy-to-use, self-designating keys

Key size (they are about 1/2-inch square) and adequate spacing makes them easy to use and reduces selection errors. Keys are identified by inserting designation strips directly into the removable key button caps. Perforated sheets

used to prepare the strips are supplied with the telephone set. Key lamps are located inside the key button, not adjacent to it. This makes key designations much easier to read in all ambient light conditions.

Use extra keys for extra service features

Keys which are not required for line control can be used to provide other service features such as add-on, intercom, or signaling, for example. The keys are convertible from locking to non-locking by removing a screw.

No-jam hookswitch

The hookswitch is located in a recess on the face of the telephone set, not on the side of the unit as is often the case. This means the set can be used on a busy, crowded desk without fear of the hook-switch being accidentally jammed open or closed by books or papers. The former would cause the set to appear to be busy to a caller, and could result in an all-important call being missed. The latter would disconnect a call in progress.

Third party position

The bottom handset recess on the face of the telephone set provides a convenient and secure off-hook resting place for the handset while calling a third party to the telephone or while digging out a file. And people won't forget that the set is off-hook because the off-hook position is so obvious.

Easy to convert from rotary dial to pushbutton dial

With the faceplate and housing removed, the rotary dial is taken out simply by lifting the dial while squeezing two tabs in the base of the phone. Two brackets on the rotary dial are then installed in reverse on the pushbutton dial and the pushbutton dial is snapped into place between the tabs in the base. All dial connections are spade-tipped for rapid connection to and disconnection from quick-connect terminals. The rotary dial faceplate is replaced with a pushbutton dial faceplate and conversion is complete. The conversion can be easily completed in less than five minutes.



The hookswitch can't be accidentally jammed open



Third-party calling position

Standard parts

The LOGIC 10 key telephone set uses standard parts (G3 handset, T1 transmitter, U1 receiver, QDB1 rotary dial, 35Q3B1 pushbutton dial, QNB18C network, C4A ringer) that are used extensively in other telephone sets. Special replacement parts inventory is minimized. And, all components other than the dials and faceplates are identical for both rotary dial and pushbutton dial models. This helps keep spare parts inventories to a minimum.

Color selection

LOGIC 10 key telephone sets are offered in two housing colors, warm white (-20) and chameleon gray (-35). The warm white telephone set is standard-equipped with a sand (-32) faceplate. The chameleon gray telephone set is standard-equipped with a dark brown (-26) faceplate. Other available faceplate colors include deep blue (-25), deep green (-33) and purple (-34).

LOGIC 10 Key Telephone Sets

Ordering information

To order, specify quantity, product code number and product name. Also specify the color code suffix for telephone sets: white (-20) or chameleon gray (-35). Product code numbers and correct names are as follows; all remarks in parentheses are for your guidance only.

Telephone sets

QSK200B LOGIC 10 Key Telephone Set (rotary dial, 10 buttons)

QSK2200B LOGIC 10 Key Telephone Set (pushbutton dial, 10 buttons)

Faceplates

Color	Rotary dial	DIGITONE dial
Dark brown	P515626	P515726
Deep blue	P515625	P515725
Deep green	P515633	P515733
Sand	P515632	P515732
Purple	P515634	P515734

Shipping information

Each unit is packed in an individual carton measuring 8 $\frac{3}{4}$ in. (222 mm) x 5 $\frac{3}{4}$ in. (146 mm) x 11 $\frac{1}{4}$ in. (286 mm). Four individual cartons are packed in one master shipping carton.

Shipping carton dimensions (4 units)

17 $\frac{3}{4}$ in. (451 mm) x 11 $\frac{1}{4}$ in. (286 mm) x 12 in. (305 mm)

Shipping weight (4 units)

28 lb. (12.7 kg)

For further information please contact our sales office nearest you.

Northeastern region

525 Executive Boulevard
Elmsford, New York 10523
Telephone: (914) 592-3434

Mid-Atlantic region

5706 New Chapel Hill Road
Raleigh, North Carolina 27607
Telephone: (919) 851-7700

Southeastern region

4934 Distribution Drive,
Tampa, Florida 33619
Telephone: (813) 247-4475

Central region

2951 Higgins Road
Elk Grove Village, Illinois 60007
Telephone: (312) 437-2370

Southwestern region

2225 Belt Line Road
Carrollton, Texas 75006
Telephone: (214) 242-0622

Pacific region

1106 Broadway
Santa Monica, California 90401
Telephone: (213) 451-8623

Corporate office

140 Federal Street
Boston, Massachusetts 02110
Telephone: (617) 482-0995

"We reserve the right, without notice, to make such changes in equipment design or components as progress in engineering or manufacturing methods may warrant."

