

245 million telephones

... and nevertheless thousands of
hands-free intercommunication
stations are every week put into
operation. Why?

Photo: Björn Tång

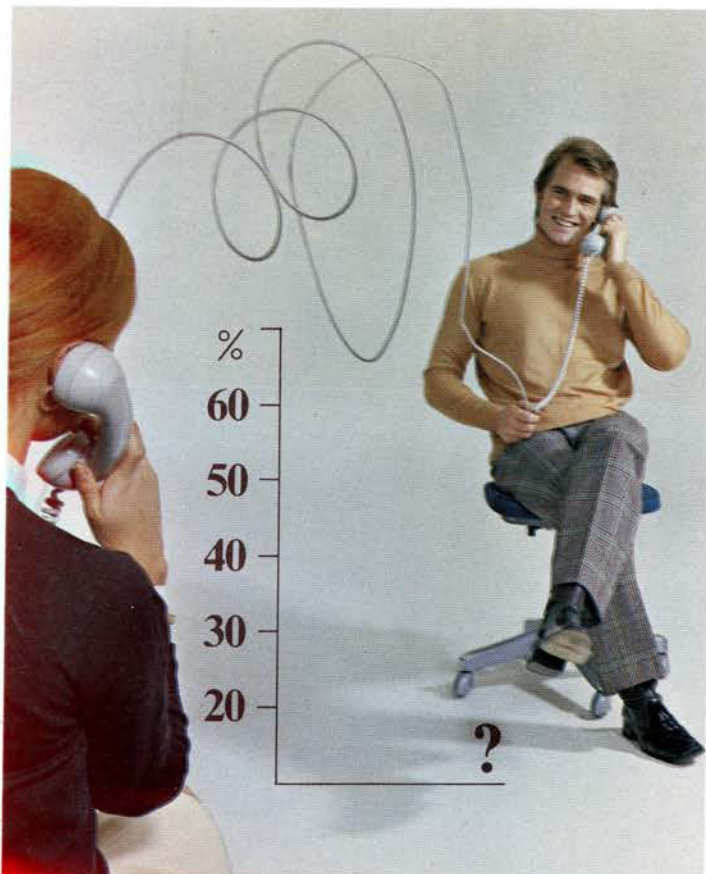
an LM Ericsson Intercommunication System...



... frees your telephone for external calls

Your telephone is tied up while you are talking to other staff members. A customer who phones has to wait on "hold" or to call again just because you are using your telephone for talking to the secretary on the floor above.

An L M Ericsson Intercommunication System is an additional and independent communication system, and as such it is completely separate from the telephone. Thus, your telephone is always free for external calls while you use your intercommunication system.



... offers a new alternative

Job specializing and company growth force us more than ever to contact others to help us handle our own specialized problems.

The walk-around method is one of the intercommunication alternatives. But it is bad economy to have employees on the move.

The second alternative is to use the telephone for intercommunication. But then outside calls will be "locked out". You have to call back and this time you pay for the calls.

In many companies, administrations and hospitals the number of internal telephone calls is high. What about your company? Are 30%, 50%, 70% or still more of the telephone calls internal? Consider modern management's solution: two separate communication systems, one for outside, the other for inside calls.

... cooperates with the telephone

When someone phones from outside, you must often seek information internally. Did the drawings come? Are the spare parts in stock? How does the X-ray plate look? When is the car ready for delivery?

With only the telephone you must disconnect the caller while obtaining this information. Is this mutually inconvenient? Does it take time? What is your experience?

However, with an L M Ericsson station beside your telephone, you keep continuous contact with your caller, while at the same time tracking down the necessary information quickly and conveniently. As the system is loudspeaking, you may, if you want, let the caller listen in, so that you do not have to repeat the answer.



... look, no hands!

The loudspeaking call from an L M Ericsson Intercommunication station reaches every corner of the room. The busy executive does not have to rise from his conference table and go to his desk: he remains seated and answers. The laboratory assistant in the film processing room does not have to wash and dry his hands before answering a call. The store foreman does not have to climb down the ladder. The shop salesman does not have to leave his customers. Always free hands for the called party, with every loudspeaking L M Ericsson Intercommunication System.



Hands-free intercommunication

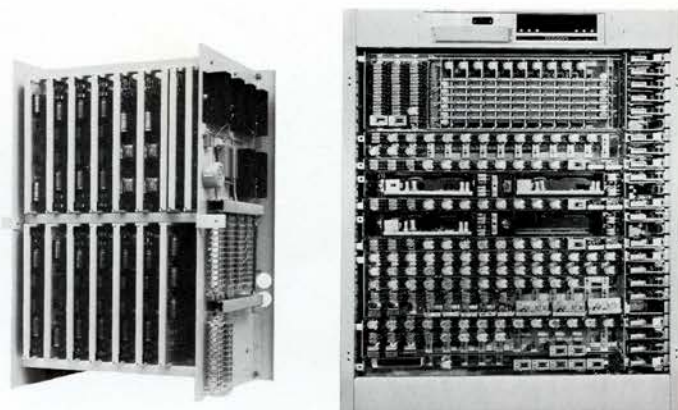


With a Duplex Intercommunication System from L M Ericsson both parties talk at a convenient distance from the stations without touching them. An electronic voice-switching device automatically switches between talk and listen.

While using your station, you can take notes, dictate a letter, or even walk about the room. Conversations are transmitted with natural voice reproduction and a striking similarity to a person-to-person visit is thus achieved.

The call goes through instantly—no delays, no waiting. **Both** parties are in direct two-way, completely hands-free communication. The called party is alerted by both tone and light signals on his station, thus affording ample privacy. For complete privacy every station also has its own automatic privacy button.

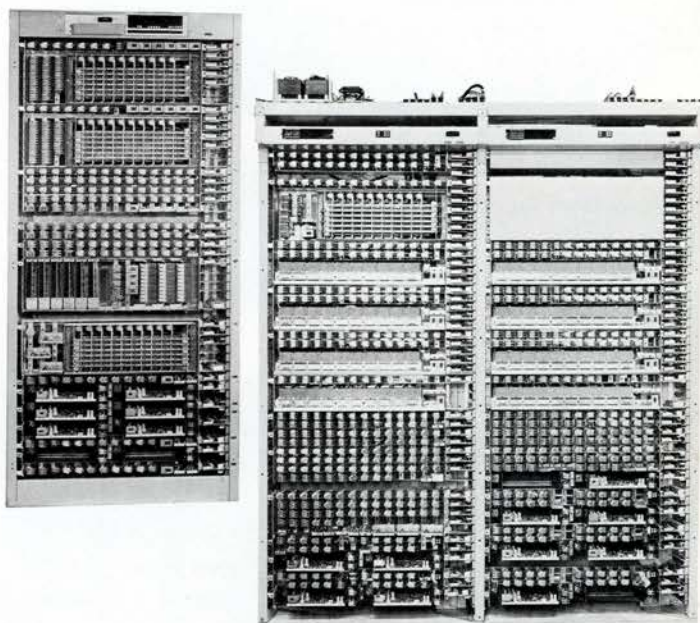
Automatic Duplex Exchange System AVF 404



Stations for System AVF 404

(please see enclosure)

1. Master stations
2. Master stations with handset
3. Flush-mounted master stations
4. Industrial master stations
5. Non-loudspeaking master stations
6. Wall-mounted sub stations
7. Flush-mounted sub stations



Exchanges

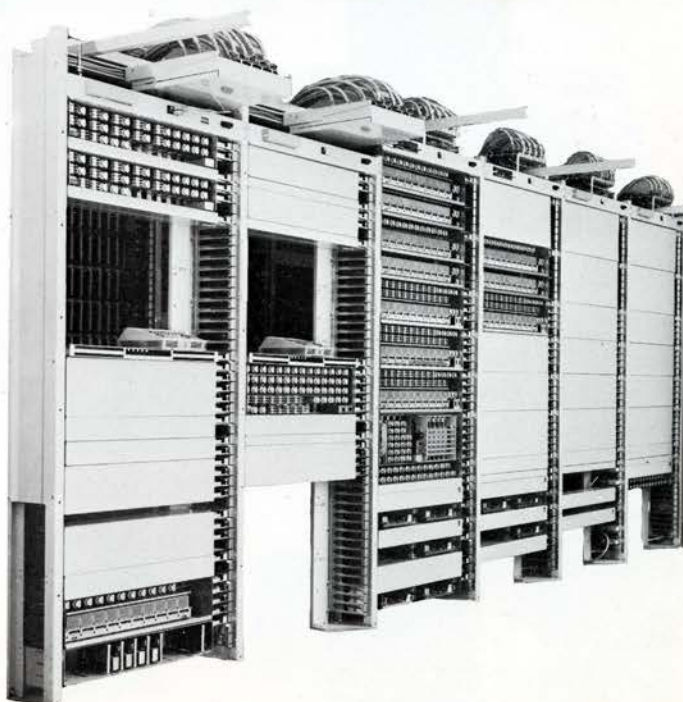
ASE 432 Automatic solid state (completely electronic) exchange with 1 or 2 connecting circuits for up to 20 extensions. Modular electronic cards for every 2 stations.

ARD 433 Automatic crossbar exchange with 2 or 3 connecting circuits for up to 40 extensions.

ARD 451 Automatic crossbar exchange with 5 connecting circuits for 50 or 100 extensions.

AKD 475 Automatic codeselector exchange with 30 connecting circuits for up to 900 extensions.

AKD 491 Automatic codeselector exchange for up to 5,400 extensions.





1



2



4



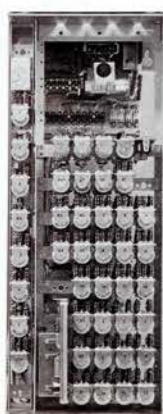
3



5



6



Automatic Simplex Exchange System AVF 204

With **this** Simplex system only the calling party need press-to-talk. The other party converses handsfree, while continuing to work. Calls are made by name-button, which instantly produces both a tone signal and a visual call signal. An outstanding feature is the small automatic exchange.

Stations are connected into the system with a slim four conductor cord which plugs into a wall terminal. Thus, types of stations can easily be changed and stations can be moved from location to location. Both master and sub stations provide busy and call signals, privacy control and pushbutton operation. A master station may call any other station in the system, while a sub station originates calls to one master only.

Stations for System AVF 204

1. Master station
2. Master station with handset
3. Master station, non-loudspeaking
4. Master station, weatherproof industrial type. Robust metal alloy cabinet with tightlocking door. Separate microphone/loudspeaker
5. Sub station, desk model with one call button and privacy button
6. Master station for flush mounting in a wall or desk etc. Aluminium front plate

Exchanges

AMD 628 Automatic exchange with built-in power supply has a fixed capacity for 12 stations. Group calling/paging to 6 predetermined stations from any master station.

AMD 436 Automatic exchange with built-in power supply has a basic capacity for 12 stations and can easily, by means of plug-in relay units be expanded to 14, 16, 18 or 20 extensions. Paging/public address to two groups each with 6 stations.

Intercom System Simplex T 8

The T8 system is ideal for the office, the workshop, the garage, the store, the home and any place requiring instant communication between two or more rooms.

7 master and/or sub stations may be called from a master station. A sub station can call one master station only.

Privacy Each master and sub station has a privacy button to prevent eavesdropping.

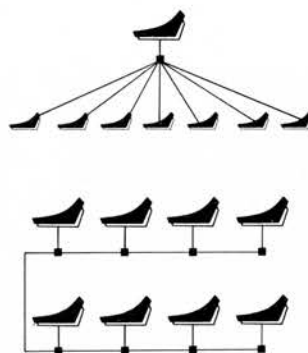
Busy indicator An amber lamp in all master stations indicates when the system is busy.

Mains or battery operation For a system comprising several master stations a power supply unit (GCT 1008) common to the entire system is to be used.

If the system has one master station only, a battery box (18.02.278) for six 1,5 V batteries may be used to supply the power.

MBA 1512 Master station for calling 7 other master and/or sub stations

MBA 1513 Sub station for calling one master station.



The T8 system may consist solely of master stations, or of one master station with sub stations, or of a combination of several master stations and sub stations.



ZS Intercommunication System for production supervision

This is a Simplex Intercommunication System for one or more master stations (control points) which individually or commonly control the different production areas in a factory, automobile workshop etc.

Independent of the noise level and for maximum comprehension, the microphone sensitivity at any sub station is individually controlled by the master station.

When a sub station calls, a lamp signal indicates the call at the master station until the call is answered. Public address and group calling facilities available with all ZS-systems. Master stations for calling 10, 20, 30, 40 or more sub stations—as desk models or for flush mounting.

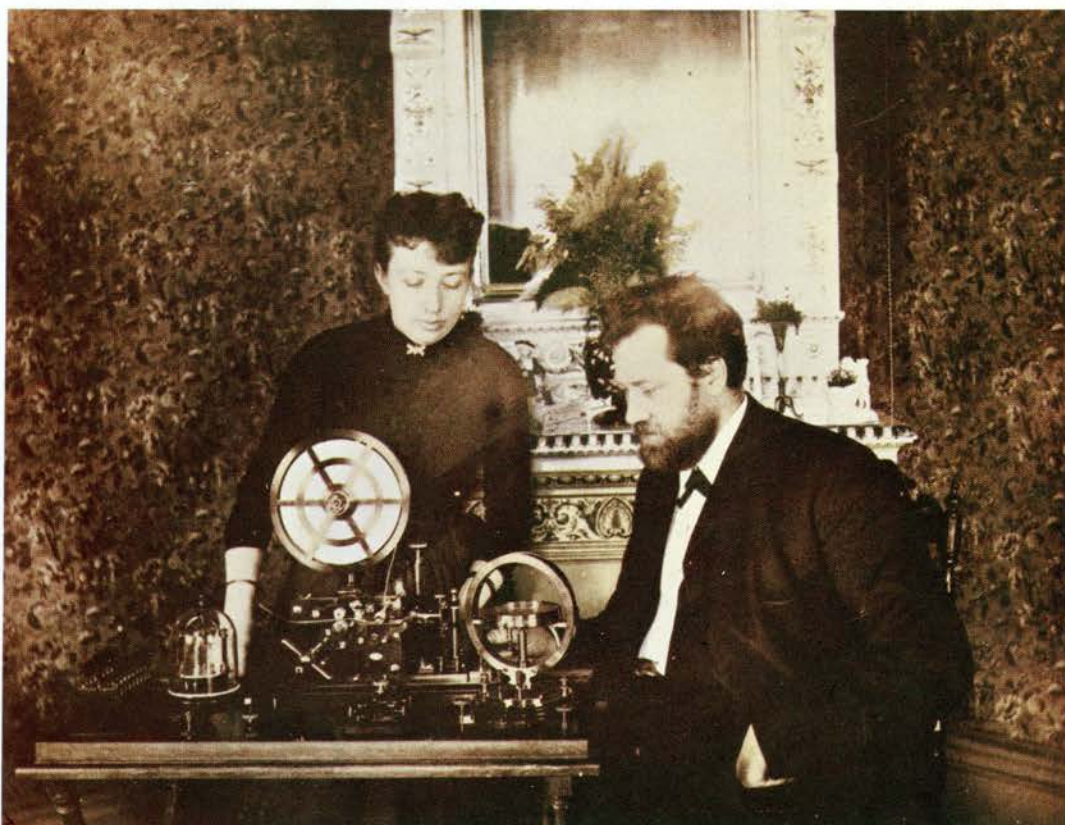
ZS-Master station for calling 20 other stations.

Sub-station for calling 1, 2 or 3 master stations.

Push button unit (waterproof) for calling 1 master station.

Compression horn microphone/loudspeaker to be used in connection with a separate push button unit.





Founded in 1876 L M Ericsson of Sweden is one of the world's leading telephone companies with 59,000 employees on all the five continents.

