



THE LEICH

900

MAGNETO TELEPHONE

LEICH SALES CORPORATION, 427 W. RANDOLPH ST., CHICAGO 6, ILL.

A New Standard of magneto service

- IT'S ACTUALLY A COMMON BATTERY TELEPHONE DESIGNED TO GIVE MAGNETO SERVICE
- REMOVE THE GENERATOR AND YOU HAVE A COMPLETE COMMON BATTERY TELEPHONE
- SAME TELEPHONE IS USED FOR WALL OR DESK MODEL
- EXCELLENT TRANSMISSION, RECEPTION AND RINGING FOR EVERY LINE CONNECTION

Here is the most practical magneto telephone you have ever seen!

Not only is it more glamorous, more attractive, less bulky — but it offers exclusive operating, service and engineering features never before available in one telephone instrument.

This Leich Magneto Telephone meets every installation requirement. With it, you can offer your subscribers their choice of wall or desk installation, for this one telephone works either way, *without any changes or additions whatsoever.*

The easy conversion to common battery service is another feature that makes this new Leich magneto telephone a sound investment. All that's necessary to convert it into a regular common battery telephone is to

remove the Alnico generator and generator face plate, add a dial blank and change a few wires. All the other parts, even including the case, remain the same.

If the magneto exchange is converted to dial, it's a simple matter to add a dial. And, both the common battery manual or dial telephones have the profitable, time and money saving feature of serving as wall or desk models.

New high standards of magneto service are yours with this Leich magneto handset. Excellent transmission and reception, reliable ringing even on long, heavily-loaded rural lines, a more conveniently located, easy to turn generator crank, dependable long-life service are operating advantages that will pay dividends.

Actually, this is a universal telephone . . . an investment that's *always* good.



ACTUAL SIZE COMPLETE EXCEPT FOR BATTERIES

YOU USE THE SAME TELEPHONE FOR DESK OR WALL INSTALLATION

There has always been the problem of some customers wanting their telephones on the wall, and others demanding desk telephones. With this new Leich magneto telephone you no longer have this problem.

Your installer simply asks the customer's preference and then either sets the Leich magneto handset on the desk or table or mounts it on the wall. He doesn't need to change or add a thing.

This remarkable advantage is obtained by having the hookswitch levers protrude from the corner of the saddle at a 45 degree angle, thus assuring positive action

of the hookswitch whether the telephone is set on a table, or mounted on a wall. This same hookswitch arrangement has been proved in operation on the Leich 600 common battery telephone, thousands of which are now in service.

So, you see, with this adaptable Leich magneto handset, you need stock only one telephone to meet every installation requirement. Saves time, money, inventory, space, work and worry. This is real dollars and cents practicability.



SAME CASE, SAME BASE,

SAME EVERYTHING . . .

NOTHING TO CHANGE,

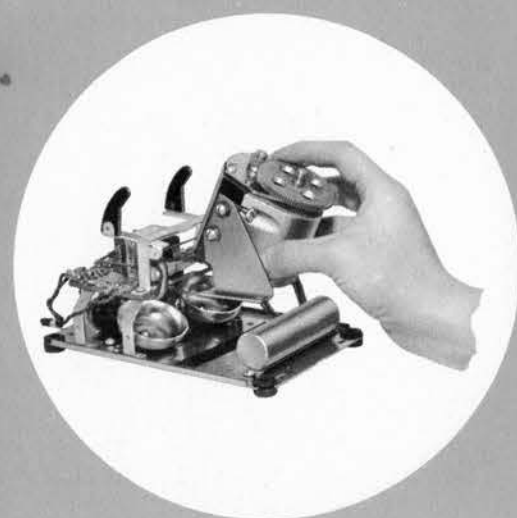
ADD OR BUY



REMOVE THE GENERATOR AND YOU HAVE A COMMON BATTERY TELEPHONE

FOR DIAL SERVICE . . . JUST ADD THE DIAL

1



If you should convert to common battery, this Leich magneto telephone can be changed over to common battery operation in about five minutes. This can be done at the subscriber's premises. First—remove the generator as shown. Four screws, three spade connectors.

2

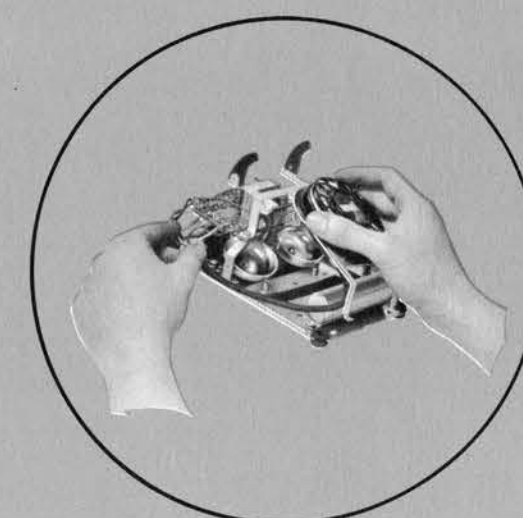


Next it is necessary to change a few wires. No soldering. This changes the circuit to common battery operation. Then remove the generator face plate as shown. Two screws.

3



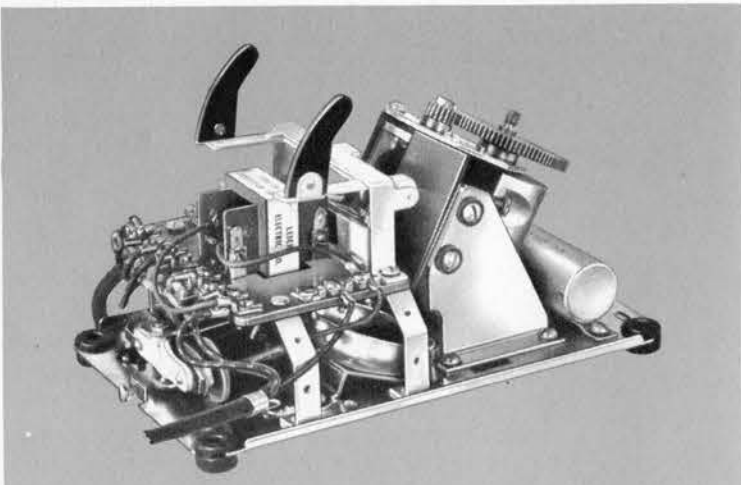
Add a dial blank. Two screws. You now have the equivalent of a Leich No. 600 Common Battery telephone. Simple, inexpensive, quick. This common battery handset can be used for desk or wall installations.



It's a simple matter to add a dial, in case your exchange is converted from magneto to dial service. The dial mounting bracket slips in place and the dial cords are attached to the convenient connector block.

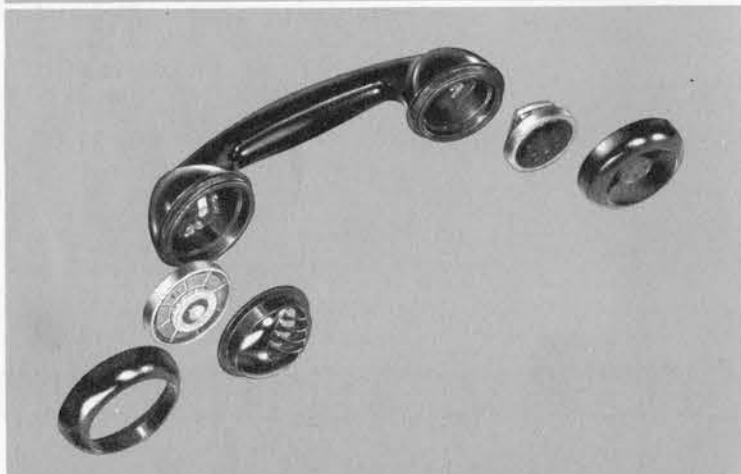
LEICH 900 MAGNETO TELEPHONE

DEPENDABLE OPERATION -
EXCELLENT TRANSMISSION
AND RECEPTION

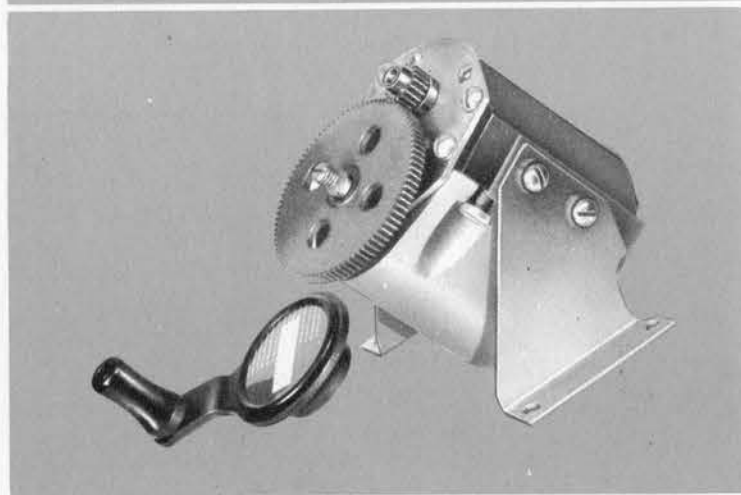


The Leich magneto telephone will operate dependably for long periods with a minimum of maintenance. The anti-side tone induction coil provides maximum talking efficiency for a wide range of line conditions. The two-toned ringer produces a loud clear ring, is easily adjusted.

The condenser is hermetically sealed, assures a minimum of leakage. All parts are readily accessible when the cover is removed.



The crisp, clear voice reproduction will assure you of satisfied subscribers. The capsule type transmitter provides faithful, high fidelity voice reproduction regardless of the position in which the handset is held. The capsule receiver reproduces voice frequencies with the utmost clarity.



The Alnico generator used in the Leich magneto telephone is powerful enough for heavily loaded rural lines. It is the same generator, with a few improvements, as is used in Leich's No. 86 magneto telephone, of which hundreds of thousands are now in service. It will give the same service as any old style 3-, 4- or 5-bar generator.

Here is real standardization for you

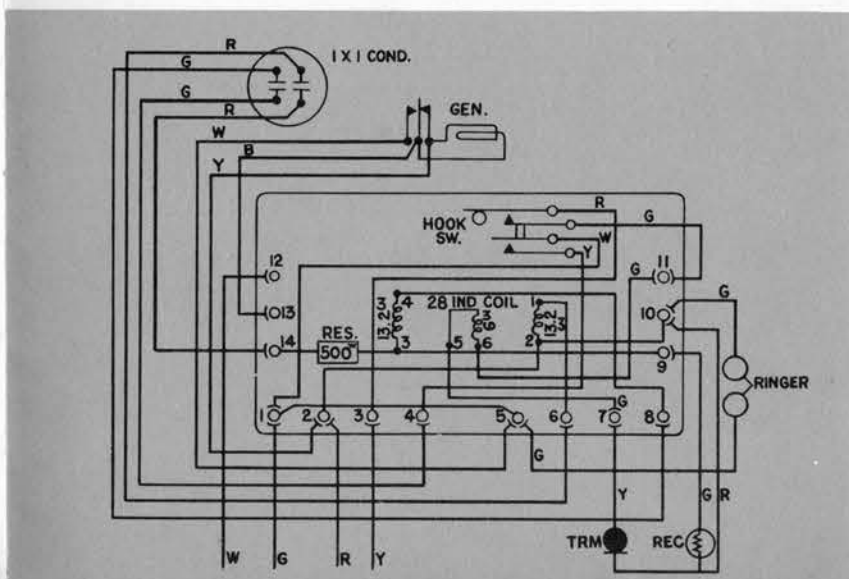


SAME

- CASE
- BASE
- INDUCTION COIL
- CONDENSER
- HOOKSWITCH
- MOUNTING PLATE
- TRANSMITTER
- RECEIVER

It's a wonderful feeling to know that you can invest in this one Leich magneto telephone, and that it will be of value no matter what happens. For here you have a wall or desk telephone, a telephone which will also serve for common battery manual or dial service, using the same case, same parts, with the exception of the generator. This is the kind of standardization that makes your investment always good. It assures your subscribers of the finest, most modern telephone service now and in the unseen future.

WIRING DIAGRAM LEICH 900 MAGNETO TELEPHONE



TO CHANGE THIS TELEPHONE TO COMMON BATTERY

To convert to common battery: disconnect gen. leads Y, W, B from 2, 5, 13 and remove generator. Install dial blank or dial. Remove gen. cover from tel. case. Change: induction coil leads (G) from 7 & 11 to 2 & 13; handset leads, red from 10 to 5, green from 9 to 4, yellow from 7 to 6; hookswitch lead, white 1 to 9; condenser leads green 4 & 8 to 1 & 7; strap 5 to 8. For metallic ringing, connect ringer to 7 & 3; for grounded ringing, connect ringer to 7 & 12. When dial is used, connect hookswitch green lead to 10. When dial is not used, connect hookswitch green lead to 11.

ORDERING INFORMATION

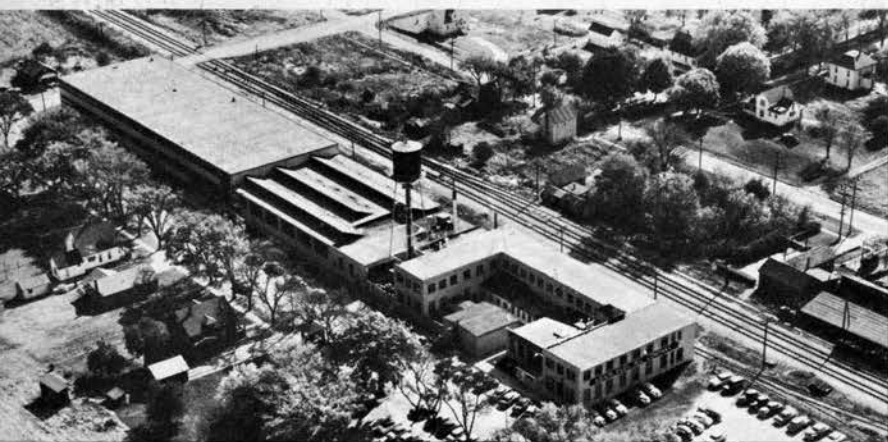
Leich 900 Series Magneto Telephones

CATALOG NO.	DESCRIPTION	RINGER
901-1000.....	Complete magneto telephone.....	1000 Ohm
901-1600.....	Complete magneto telephone.....	1600 Ohm
901-2500.....	Complete magneto telephone.....	2500 Ohm
<i>NOTE: All 900 magneto telephones are equipped with a sure-ring condenser</i>		
911-1000.....	Complete magneto telephone..... with hookswitch latch*	1000 Ohm
911-1600.....	Complete magneto telephone..... with hookswitch latch	1600 Ohm
911-2500.....	Complete magneto telephone..... with hookswitch latch	2500 Ohm

** The hookswitch latch is for monitoring on party lines—conserving batteries*

NOTE: It is not necessary to specify whether this Leich magneto telephone is wanted for wall or desk installation. It can be used

either way, without making any changes or additions.



LEICH—manufacturer
of telephones
since 1907

LEICH SALES CORPORATION - 427 W. RANDOLPH ST. - CHICAGO 6, ILL.

LEICH SALES CORPORATION

October 1, 1955

427 W. Randolph Street
Chicago 6, Illinois

PRICE LIST

Leich Magneto Telephones (900 Series)

<u>Catalog No.</u>	<u>Price Each</u>
901-1000	\$ 32.05
901-1600	32.25
901-2500	32.55
911-1000	32.90
911-1600	33.10
911-2500	33.40
For Ground Ringing Pushbutton	Add 1.10
For Coiled Kord	Add30

ALL PRICES F.O.B. GENOA, ILLINOIS

Prices are subject to change without notice.

NOTES:

All 900 Magneto Telephones are equipped with a sure-ring condenser.

911 models have a hookswitch latch for monitoring on party lines, conserving batteries.

It is not necessary to specify whether this telephone is for wall or desk installation. It can be used either way, without making any changes or additions.

PARTS PRICE LIST
900 TYPE TELEPHONE

October 1, 1955

<u>Part No.</u>		<u>Price</u>
12269	Case	\$ 2.75
12571	Case with pushbutton (for 911 and 901-D)	3.00
12410	Case less pushbutton (for 911 and 901-D)	2.75
	Generator Cover & Clamps55
8348	Retaining Ring09
8349	Cover Disc015
12285	Number Card015
11889	Rubber Foot03
11868	Monitor Pushbutton02
11871	Snap Ring02
11874	Latch Spring02
11891	Coil Spring02
12976	4-Conductor Base Cord, Neoprene95
11987	No. 28-Induction Coil	2.70
12675	6-A Hookswitch	2.35
12702	58-B Condenser	1.90
38A-1000	Ringer, 1000-ohm biased	4.25
38A-1600	Ringer, 1600-ohm biased	4.65
38A-2500	Ringer, 2500-ohm biased	4.90
13131	Connecting Block30
O-13318	Bakelite Base Plate95
7-F	Generator	11.60
12700	Generator Crank40
12637	Armature Wound & Assembled	4.15
12647	Shunt Spring Assembled90
1214	Gear Hub Collar17
1215	Shunt Piece17
13429	Gear Shaft Spring03
12628	Pinion60
13335	Gear Wheel & Hub Assembled	2.10
9952	Magnet	2.90
12626	Pole Piece	1.15
12638	End Plate Assembled, Gear End60
12639	End Plate Assembled, Spring End60
13305	Gear Wheel Shaft60
110	Hand Unit, with cord	8.65
12297	Transmitter, F-1 (1 to 49)	1.50
12297	Transmitter, F-1 (50 or more)	1.35
12298	Receiver, HA-1 (1 to 19)	2.50
12298	Receiver, HA-1 (20 or more)	2.25
12295	Hand Unit Shell	3.75
11751	Mouthpiece Clamping Ring50
11752	Mouthpiece70
11753	Receiver Cap60
11853-R	Hand Unit Cord, Neoprene63
5001-5	Koiled Kord90

Prices are F.O.B. Genoa, Illinois -- Prices are subject to change without notice

LEICH SALES CORPORATION - 427 W. Randolph St., Chicago 6, Ill.