

2.





**F**

F

S



•

- 1

1

•

1

100 Wm.

TABLE A

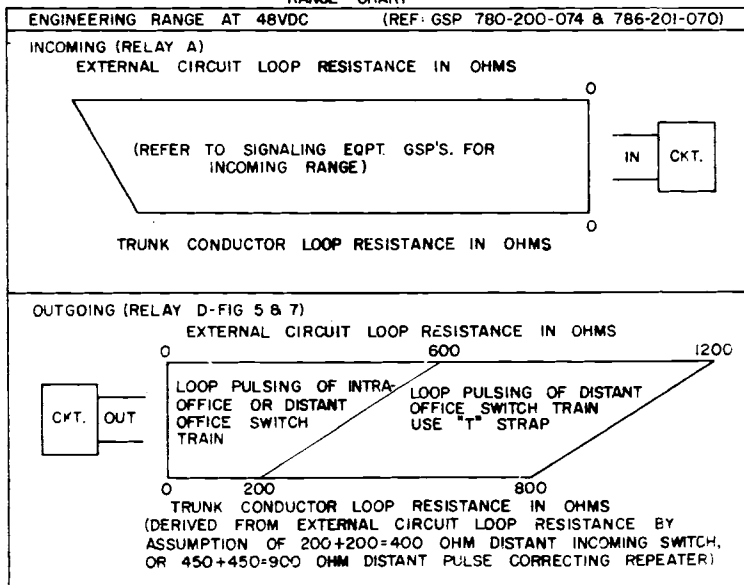
FIG.	MOUNTING		FIGURE OPTIONS			APPARATUS AND WIRING OPTIONS						REMARKS
	JACK IN	UNIT	DR DIGIT RESTRICTION	EC 4TH WIRE BUSY FLASH	OH BLOCK CKO SUPPLY SIG.	"C"	"D"	"M"	"N"	"R"		
1	*					*	*	*	*			
2	*			*		*	*	*	*			
3	*		*			*	*	*	*			
4	*				*	*	*	*	*			
5A	*					*	*	*	*			
6	*			*		*	*	*	*			
7A	*	*				*	*	*	*			
8A	*					*	*	*	*			
9A	*	*				*	*	*	*			

150019-H

OPTION TABLE

APP AND/OR WIRING	ISSUES		WAS PART OF	SUPERSEDED BY	WIRED BY	FIGURE OR SUFFIX	TABLE	NOTES
	FIRST USED	LAST USED						
A	1	2		B	*	1-4		17
	9	11		B	*	5A, 6, 7A		28
B	3			*		1-4		17
	12			*		5A, 6, 7A		28
C	1			*		1-3	A	18
D	4			*		4	A	18
E	1	6		*		1-4		21
F	9	15		I	*	5A, 6, 7A		
G	1	7		H	*	1-4		22
H	8			*		1-4		22
I	16			*		5A, 6, 7A		
J	1	5		K	*	1-4, EC, OH		20
K	6			*		1-4, EC, OH		20
L	9	10		P	*	5A, 6, 7A		26
M	1			*		1, 2, 4	A	15
N	2			*		3	A	15, 19
O								
P	11			*		5A, 6, 7A		26
Q								
R	6			*		1-4		20
S	1			*		1-7A		11
T	1			*		1-7A		13
U	1	8		W	*	1-4		24
V	22			*		7A		33
W	9			*		1-4		24
X	1	5		R	*	1-4		20
Y	6			*		1-7A, EC, OH		20
YY	9	11		K	*	1-4		27
	6	11		*		5A, 6, 7A		27
Z	6	11		*		1-7A		20
AA	1	20		AB	*	5A		
	1			*		6, 7A		
AB	21			*		5A		

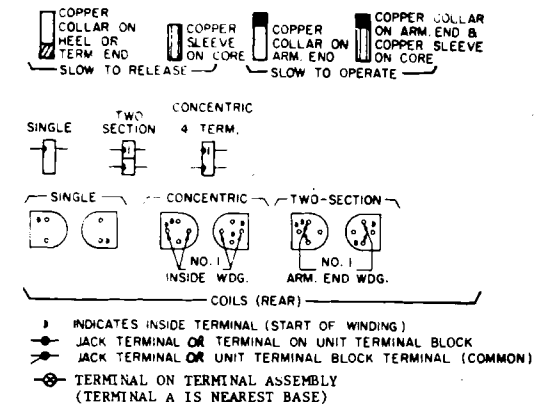
RANGE CHART



MANUFACTURING NOTES (CONT'D):

- 20-PRIOR TO ISSUE 6, WIRINGS "J" & "K" WERE PART OF CIRCUIT, AND "K" & "R" WIRING AND CAPACITOR C4 WERE NOT SHOWN. "K" WIRING SUPERSEDES "J" WIRING. "R" WIRING SUPERSEDES "K" WIRING. "Y" WIRING IS NORMALLY PROVIDED. INSTALLER SHALL REMOVE "Y" WIRING AND ADD "Z" WIRING WHEN THIS CIRCUIT IS USED WITH TYPE 33A OR EQUIVALENT CARRIER.
- 21-PRIOR TO ISSUE 7, "E" WIRING WAS PART OF CIRCUIT. BEGINNING WITH ISSUE 7, "E" WIRING IS NO LONGER SUPPLIED.
- 22-PRIOR TO ISSUE 8, WIRING "C" WAS PART OF CIRCUIT AND WIRING "H" WAS NOT SHOWN. WIRING "H" SUPERSEDES WIRING "C".
- 23-PRIOR TO ISSUE 8, RESISTOR B WAS 500 OHM.
- 24-PRIOR TO ISSUE 9, WIRING "U" WAS PART OF CIRCUIT. APPARATUS & WIRING "W" WERE NOT SHOWN. APPARATUS & WIRING "W" SUPERSEDE WIRING "U". (PULSE TEST KEY HAD 3 SPRINGS, WITH NUMBERS INSIDE PARENTHESES. FIVE SPRING KEY, WITH SPRING NUMBERS NOT IN PARENTHESES, BECOMES PART OF CIRCUIT). (FIGURES 1-4)
- 25-ISSUE 9 ADDED FIGURES 5 & 6 AND TABLE A.
- 26-ISSUES 9-10, WIRING "L" WAS PART OF FIGURES 5 AND 6. BEGINNING WITH ISSUE 11, WIRING "P" SUPERSEDES WIRING "L".
- 27-ISSUES 6-11, IN FIGURES 1-4, "YY" WIRING & APPARATUS WERE PART OF "K" WIRING & APPARATUS. RESISTOR A WAS RATED 2 WATTS. ISSUES 9-11, IN FIGURES 5-6 "YY" WIRING & APPARATUS WERE PART OF CIRCUIT. RESISTOR A WAS RATED 2 WATTS. BEGINNING WITH ISSUE 12, "YY" WIRING & APPARATUS ARE NO LONGER PROVIDED, AND RESISTORS A ARE RATED 5 WATTS.
- 28-ISSUES 9-11, IN FIGURES 5-6, "A" WIRING WAS PART OF CIRCUIT AND "B" WIRING & APPARATUS (DIODE CR1) WERE NOT SHOWN. BEGINNING WITH ISSUE 12, "B" WIRING AND APPARATUS SUPERSEDES "A" WIRING.
- 29-TERMINAL DESIGNATIONS OUTSIDE PARENTHESES ARE FOR JACK-IN MOUNTING FIGURES 5A & 6 AND THOSE INSIDE PARENTHESES () ARE FOR FIGURE 7A (UNIT MOUNTING).
- 30-PULSE REPEATING TEST: OPERATE PULSE TEST KEY. WITH TEST SET H-85398, OR EQUIVALENT, APPLY 12 PULSES PER SECOND 50% BREAK TO TEST JACK 3-4 ADJUST RELAY A TO PRODUCE 57%-61% BREAK PULSES, MEASURED AT TEST JACK 7-8.
- 31- IN FIGURE 5A, 6, 7A, 8A, OR 9A PULSE TEST KEY SPRING NUMBERS NOT IN BRACKETS ARE FOR BUSY KEY TYPE, AND THOSE IN BRACKETS ARE FOR TURN KEY TYPE.
- 32- FIGURES 8A AND 9A ARE NOT "GENERAL SYSTEM STANDARD" FOR GENERAL SYSTEM STANDARD APPLICATION SEE: GSP 300-070, TABLE 9C, NOTE 1.
- 33- PRIOR TO ISSUE 22, IN FIGURE 7A, RELAY B SPRINGS WERE NUMBERED AS SHOWN IN PARENTHESES (); BEGINNING WITH ISSUE 22, SPRINGS ARE NUMBERED AS SHOWN NOT IN PARENTHESES ().

SYMBOLS



MANUFACTURING NOTES:

- 10-USE FIGURE EC IF INCOMING SWITCHES PROVIDE 4TH WIRE FLASH BUSY (NOTE 15).
- 11-INSTALLER SHALL CUT STRAP "S" WHEN 900 OHM LINE TERMINATION IS REQUIRED.
- 12-WHEN THIS EQUIPMENT TERMINATES ON LINE CIRCUIT, INSTALLER OMTS CSW.
- 13-ADD "T" STRAP WHEN LOOP RESISTANCE OF ASSOCIATED TRUNK EXCEEDS 600 OHMS. RESISTANCE OF ASSOCIATED TRUNK SHOULD NOT EXCEED 1200 OHMS.
- 14-SHELF JACKS 9 AND 11 MAKE CONTACT WHEN SWITCH IS REMOVED.
- 15-PRIOR TO ISSUE 2, "M" WIRING WAS PART OF CIRCUIT, "N" WIRING AND FIGURE DR WERE NOT SHOWN. PROVIDE FIGURE DR AND "N" WIRING WHEN ACCESS DIGIT MUST BE RESTRICTED. OTHERWISE PROVIDE "M" WIRING. (THIS CIRCUIT IS ARRANGED TO PROVIDE EITHER 4TH WIRE FLASH BUSY (FIGURE EC) OR DIGIT RESTRICTION (FIGURE DR)).
- 16-CONTACTS "X" OPERATE FIRST.
- 17-PRIOR TO ISSUE 3, "A" WIRING WAS PART OF CIRCUIT AND "B" WIRING & APPARATUS WAS NOT SHOWN. BEGINNING WITH ISSUE 3, "B" WIRING & APPARATUS SUPERSEDES "A" WIRING.
- 18-PRIOR TO ISSUE 4, "C" WIRING WAS PART OF CIRCUIT AND "D" WIRING & FIGURES 4 AND OH WERE NOT SHOWN. PROVIDE FIGURE 4 WHEN ACCESSING CIRCUIT CANNOT ACCEPT SUPERVISORY SIGNALS FROM CKO OPERATOR.
- 19-PRIOR TO ISSUE 4, "N" APPARATUS WAS NOT SHOWN. BEGINNING WITH ISSUE 4, "N" APPARATUS BECOMES PART OF CIRCUIT WHEN "N" WIRING IS USED.

STOCKLIST J-610051-71 (FIG. 9A)
 STOCKLIST DH-610051-70 (FIG. 7A)
 STOCKLIST DH-610051-47 (FIG. 6)
 STOCKLIST DH-610051-46 (FIG. 5A)
 STOCKLIST DH-610051-45 (FIG. 5A)
 STOCKLIST DH-610051-44 (FIG. 3)
 STOCKLIST DH-610051-43 (FIG. 2)
 STOCKLIST DH-610051-42 (FIG. 4)
 STOCKLIST DH-610051-41 (FIG. 1)
 RUNNING LIST RDH-610051-40 (FIG. 3)
 RUNNING LIST RL-610051 (FIG. 1)
 JUMPER LIST JL-610051

GTE

CURRENT DRAIN DATA
HOLDING CURRENT AMPS.
0.30

ASSOCIATED DRAWINGS		
DRAWING NO.	ISS	DESCRIPTION
AH-610051	10	ADJUSTMENT
E-610051	6	EXPLANATION

DESIGNED L.L. SMITH
 APP'D. H.W. BALZER
 SCALE: DATE: 1/30/56
 DO NOT SCALE DRAWING

INCOMING REPEATER CKT.
CX DIALING

H-610051

AUTOMATIC ELECTRIC COMPANY
NORTHLAKE, ILL., U.S.A. GENOA, ILL., U.S.A. WAUKESHA, WISC., U.S.A.

FIG. 1 OR 2 (NAFM)
FIG. 3 (AFM) FIG. 4 (NAFM)

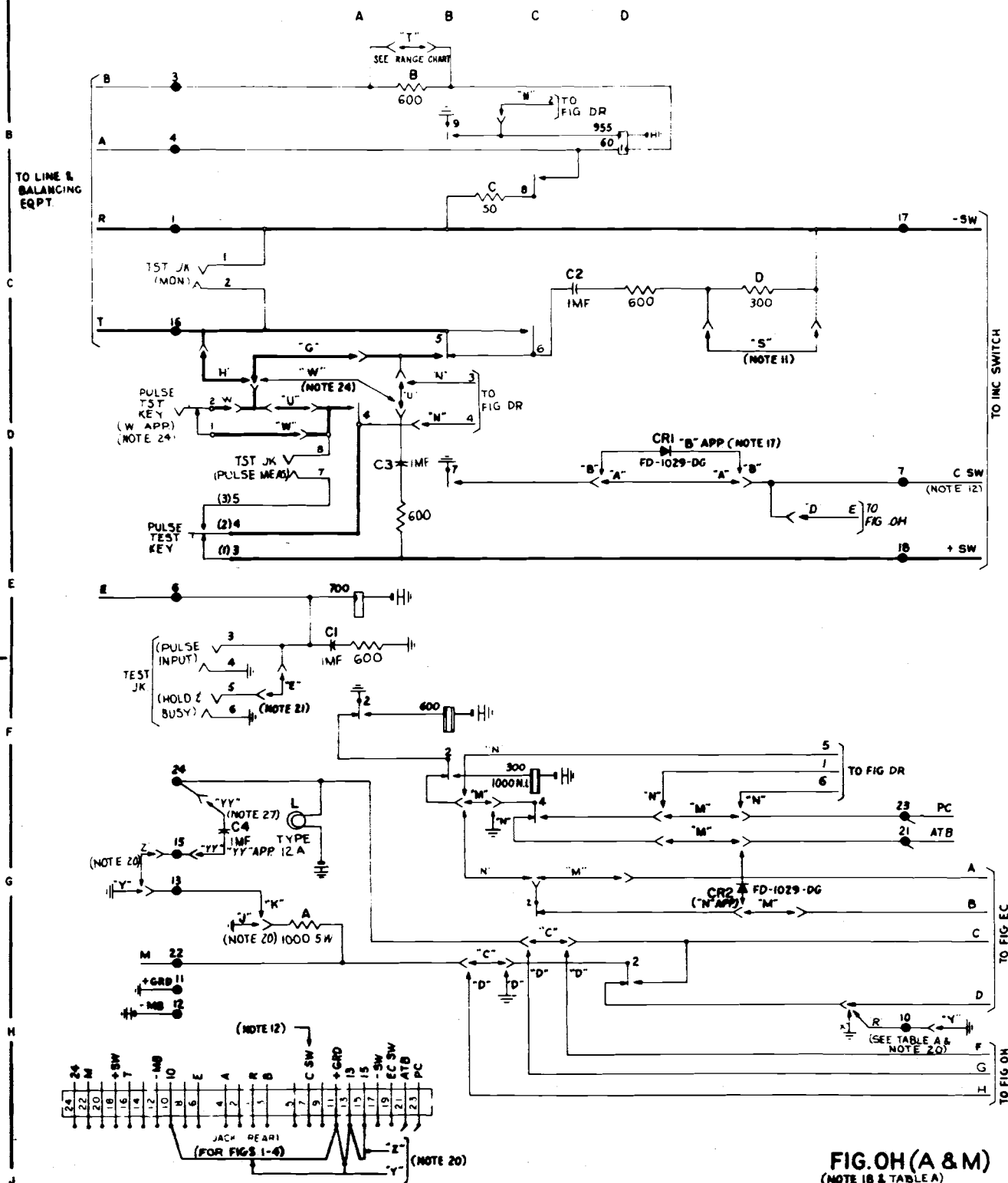


FIG. OH (A & M)
(NOTE 18 & TABLE A)

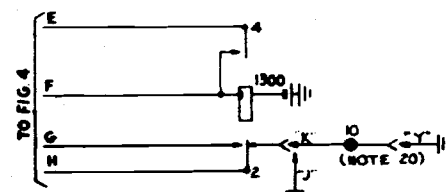


FIG. 5A OR 7A
FIG. 6

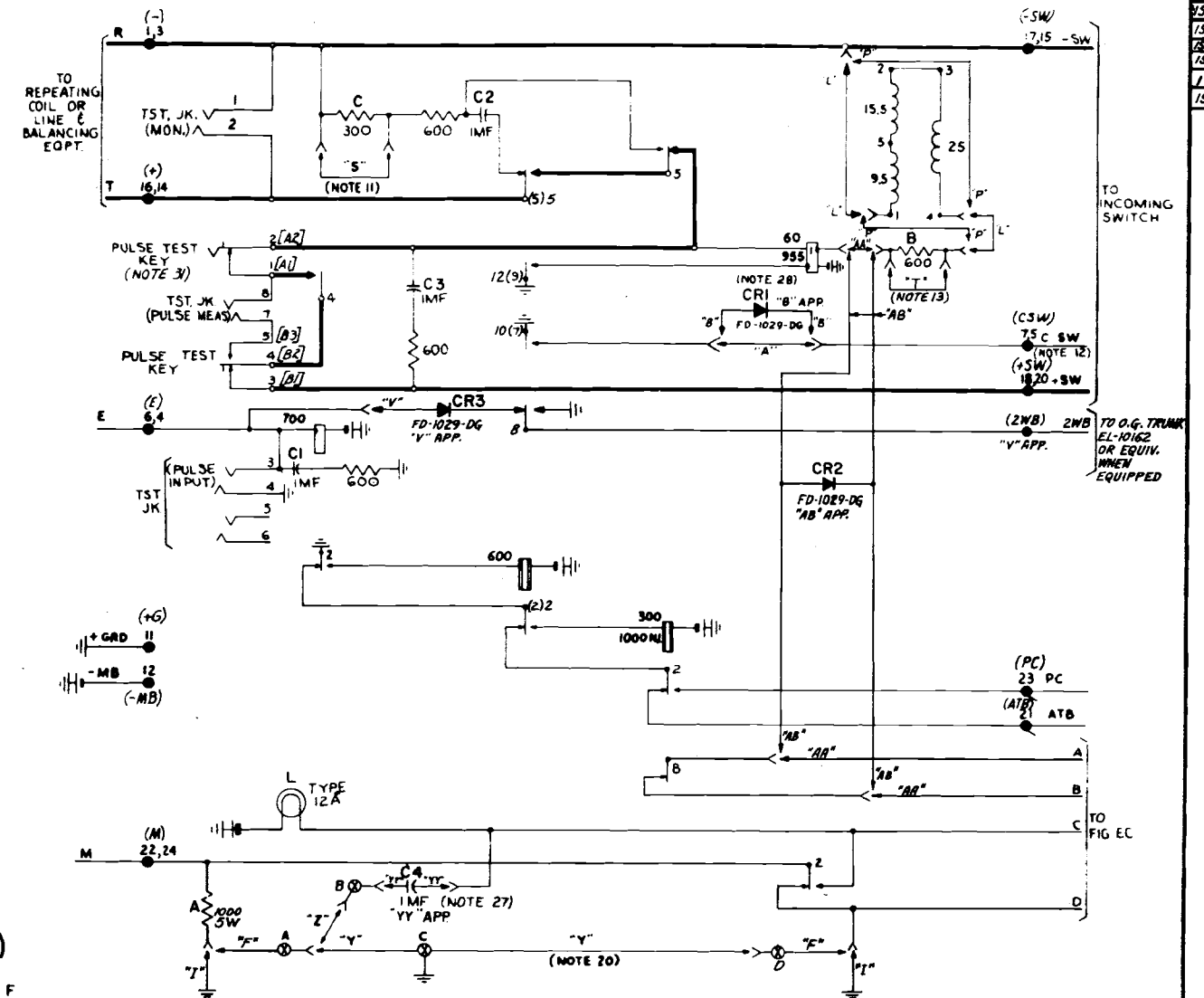


FIG. DR(A & M)
(NOTE 15 & TABLE A)

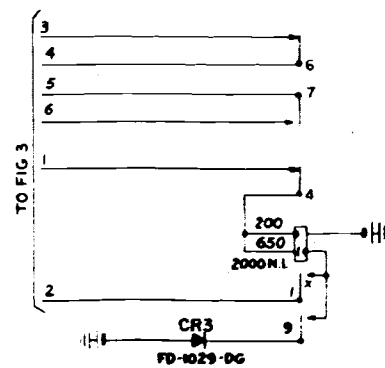
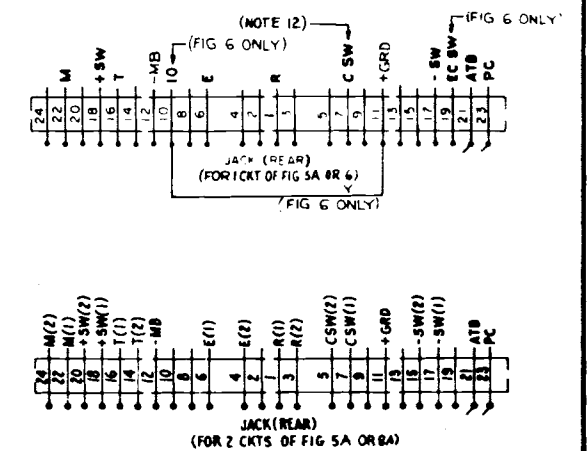
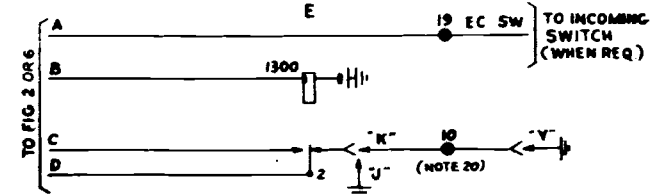


FIG. EC
(NOTE 10 & TABLE A)

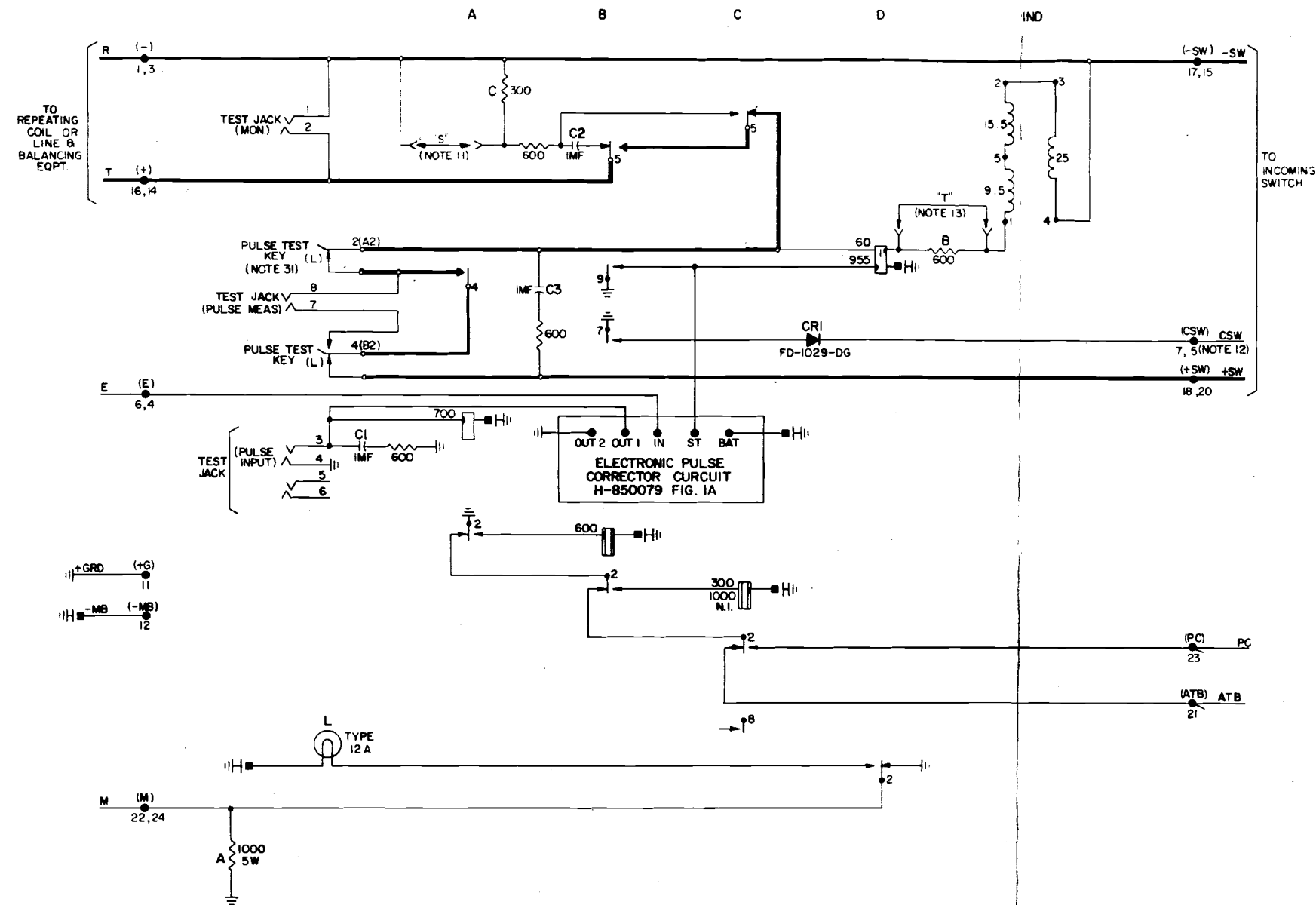


A & M FIG. 8A-JACK MOUNTED
(NOTE 32) FIG. 9A-UNIT MOUNTED

H-610051

SHEET 3 OF 3

ISSUE: 19
ISS: 20
ISS: 21
ISSUE: 22



H-610051

SHEET 3 OF 3

AUTOMATIC ELECTRIC COMPANY
NORTHLAKE, ILL., U.S.A. • GENOA, ILL., U.S.A. • WAUKESHA, WISC., U.S.A. •