

TELEPHONE SETS — 354A,C

COMMON BATTERY — CONNECTIONS

1.00 INTRODUCTION

1.01 This section covers the combination of apparatus, circuit diagrams, and connections for the 354A and C telephone sets.

1.02 These sets are used for the following services:

- Individual lines.
- 2-party flat rate.
- 2-party message rate.
- 2-party automatic ticketing.
- PBX stations.
- 2-party automatic message accounting and zone registration.
- 4-party semiselective.
- Multiparty divided code.
- Multiparty nonselective.



FIG. 1—354C TELEPHONE SET

TABLE A
 COMBINATION OF APPARATUS

Tel. Set Code	Use	Components						
		Handset	Dial	Apparatus Blank	Induction Coil	Ringer	Capacitor	Filter (Optional)
354A	Manual	F1	—	94A	101B	B1AL	195A	—
354C	Dial		5H or 6A	—		B2AL		61E*

* Either a 61E or 61G filter may be used with a 5-type dial in the 354-type set.

2.00 CONNECTIONS

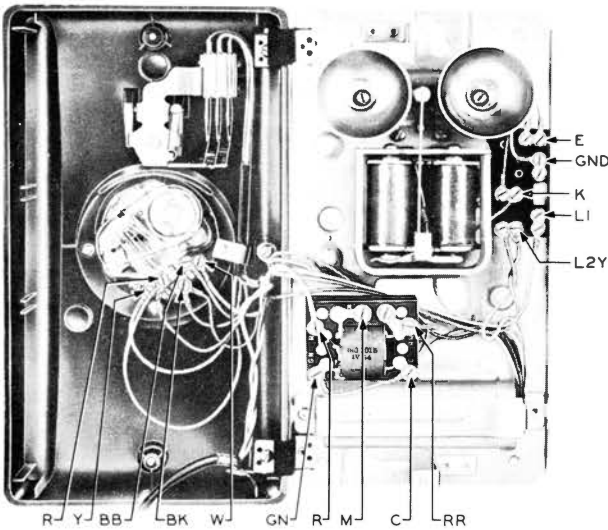


FIG. 2—354C TELEPHONE SET

TABLE B
LINE AND RINGER CONNECTIONS

Wire or Lead		Individual or Bridged	Ring Party	Tip Party	Tip Party—Position 2	
			Positions 1, 3, 5, 7, 9	Positions 2, 4, 6, 8, 10	Message Rate	SxS with AT
					Zone Registration	SxS with AMA
					X-bar with AMA	Mod X-bar with AMA
Inside Wire in Set	R	L1	L2	L1	L1	L1
	GN	L2	L1	L2	L2	L2
	Y	GND	GND	GND	GND	GND
Ringer Lead	R	L1	K	GND	K	M
	BK	K	GND	K	GND	RR
	SL	E	E	E	M	K
	SL-R	E	E	E	RR	GND

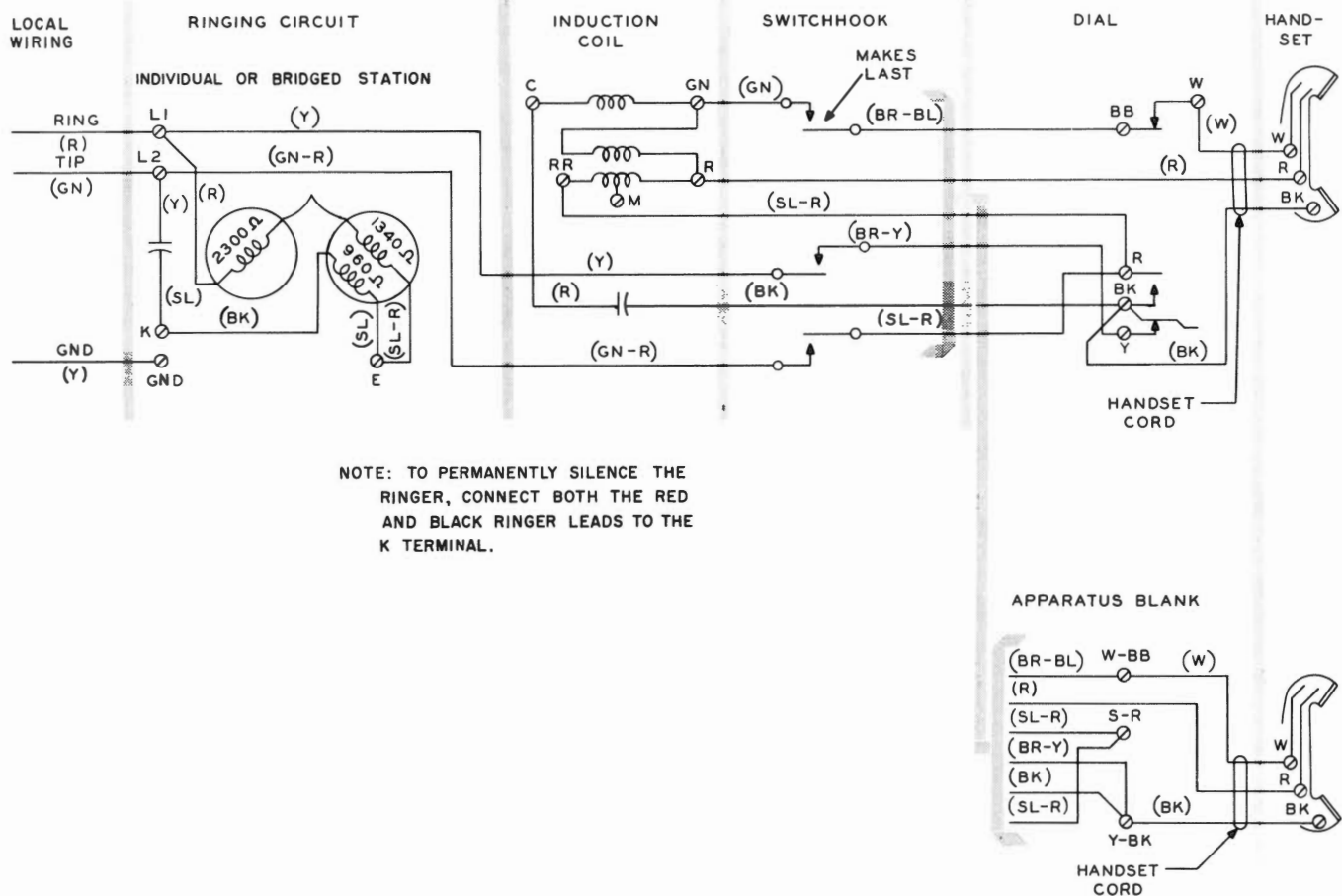


FIG. 3—354A,C CIRCUIT DIAGRAM
(INDIVIDUAL OR BRIDGED STATION)

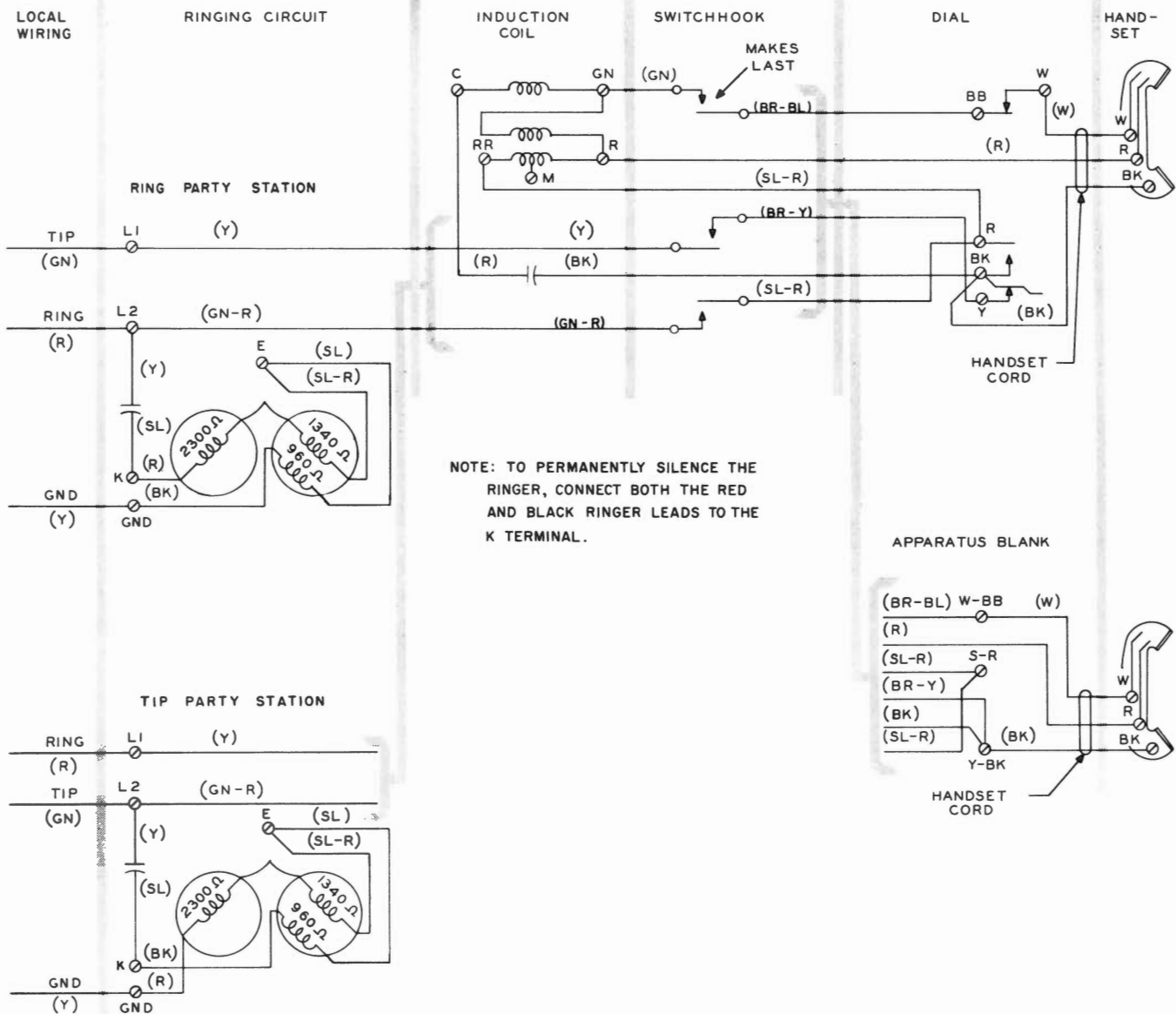


FIG. 4—354A,C CIRCUIT DIAGRAM
(RING AND TIP PARTY—FLAT RATE)

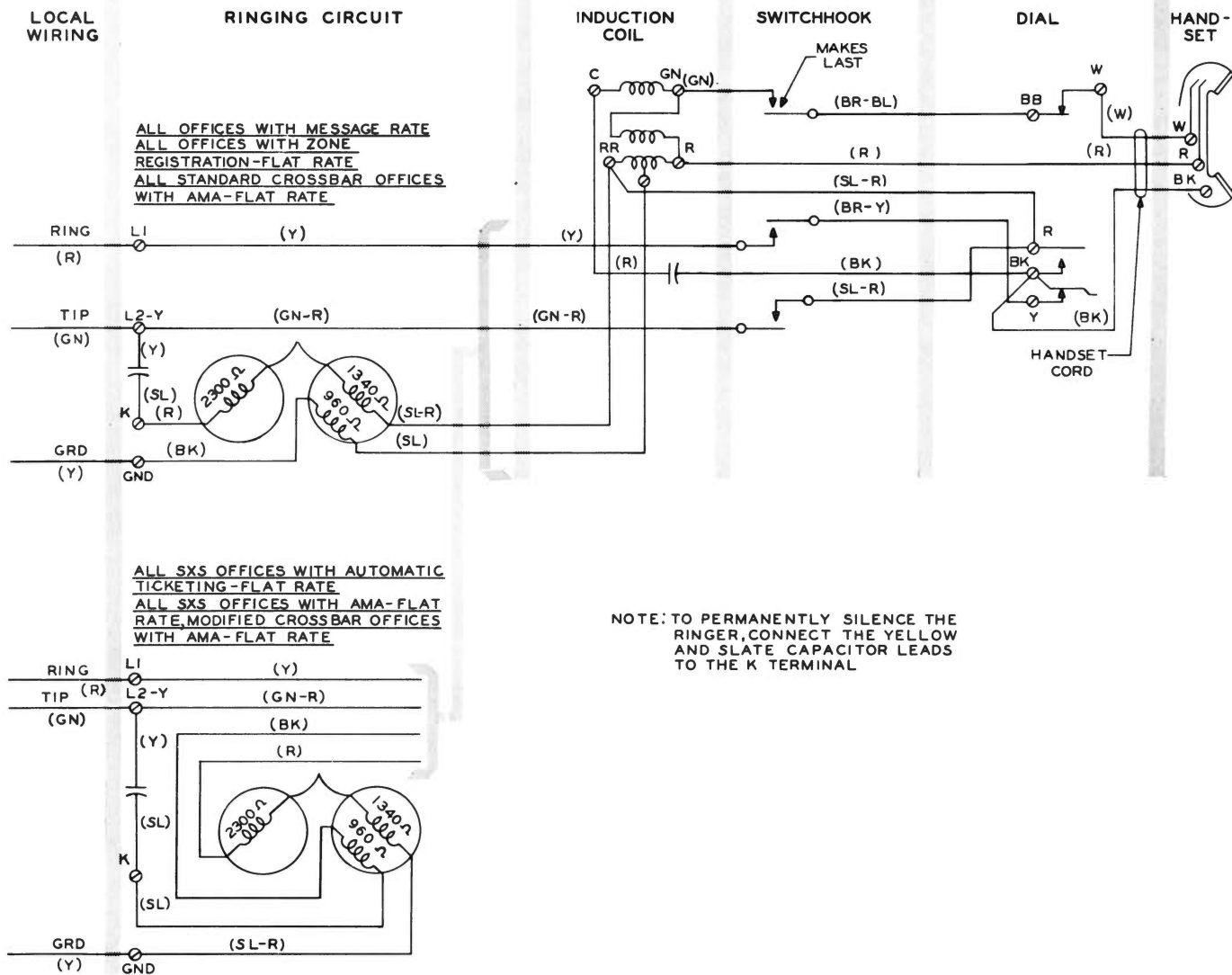


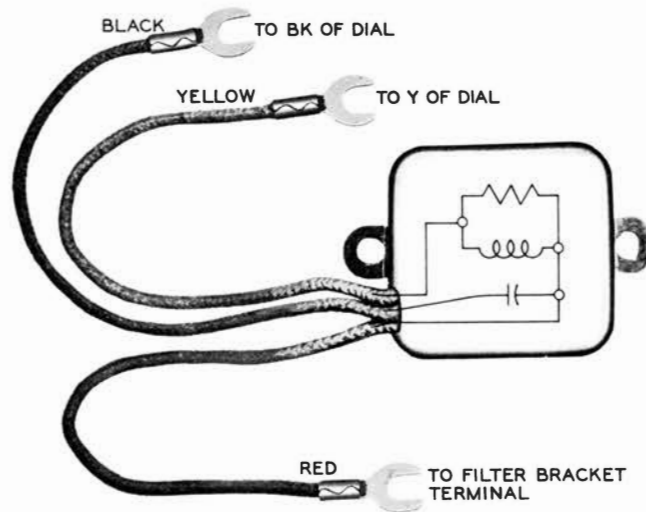
FIG. 5—354C CIRCUIT DIAGRAM
(MESSAGE RATE OR TIP PARTY IDENTIFICATION FEATURE)

3.00 FILTER CONNECTIONS

When a radio-frequency suppression filter is used in the 354C set, make connections as shown in Fig. 6.

4.00 RINGERS

The ringers in these sets are of the high-impedance type. For information on the number and type of ringing bridges permitted on each line, reference should be made to the C Section covering ringer limitations.



Note: Remove brown-yellow lead from Y of the dial and terminate it on the filter bracket terminal.

FIG. 6—61E OR G FILTER (WITHOUT BRACKET)