

## COIN COLLECTORS

200C, D; 210G, H; 212G, H; 220, 221, 222, 223C, D, G, H

### COMMON BATTERY - CONNECTIONS

#### 1.00 INTRODUCTION

To fulfill the demand for coin collectors with the transmission equivalent of the 500-type telephone set and to provide additional security features for prepay types, a new series of coin collectors has been produced. Information covering significant changes, and the connections for these sets, is contained herein. This practice is provided on an interim basis and will be cancelled when the regular practices are issued.

#### 2.00 GENERAL

2.01 The new coin collectors are of the following types:

200C, D	- Manual Postpay
210G, H	- 10-cent Dial Postpay (CDO)
212G, H	- 10-cent Dial Postpay (CDO) Equipped with Washer Reject

220C, D, G, H	- 10-cent Prepay
221C, D, G, H	- 10-cent Prepay Equipped with Pull Bucket
222C, D, G, H	- 10-cent Prepay Equipped with Washer Reject
223C, D, G, H	- 10-cent Prepay Equipped with Pull Bucket and Washer Reject

2.02 The 221 and 222 types will be made by conversion of older types only. The other coin collectors will be made by new manufacture and conversion.

2.03 Table A lists the new coin collectors, old codes replaced, and the significant changes.

2.04 The new series of coin collectors is designed to operate with the 425B network in an external subscriber set.

2.05 Spring-type handset cords are standard for these new coin collectors.

TABLE A

200 SERIES COIN COLLECTORS

New Coin Collector	Old Codes Replaced	Significant Changes
200C, D	182C, D	1. Replaced F-type handset with G-type. 2. Removed induction coin and added a terminal plate. 3. L terminal added to backplate; BKX terminal removed from transfer spring assembly.
210G, H 212G, H	193G, H 198G, H	1. Replaced F-type handset with G-type. 2. Removed induction coil and added a terminal plate. 3. L terminal added to backplate; BKX terminal removed from transfer spring assembly.
220C, D, G, H 221C, D, G, H* 222C, D, G, H* 223C, D, G, H	191C, D, G, H 195C, D, G, H 196C, D, G, H 197C, D, G, H	1. Replaced F-type handset with G-type. 2. Removed induction coil and added a terminal plate. 3. L terminal added to backplate. 4. Replaced 2-spring coin relay with 4-spring dial shorting coin relay (P-10E202).

\*Made by conversion of older types only.

When straight handset cords are required the suffix Y will be added to the code of the coin collector of this new series on the shipping carton only.

2.06 Though designed for 10-cent operation, these coin collectors can be

modified for use in 5-cent areas by using a cutover clip as in the older-type sets.

### 3.00 CONNECTIONS

3.01 Connections for the coin collectors described in this section are shown in the following tables:

TABLE B

#### CONNECTION FOR 200C, D COIN COLLECTORS WITH 685A SUBSCRIBER SET

Inside Wire from Protector or Line	685A Subset Terminals	Inside Wire from Subset to Coin Collector (Quad + Pair)	Coin Collector Terminals
Ring —R→	L1		
Tip —GN→	L2		
	R	←R→	TR
	GN	←GN→	BBX
	L1	←Y→	Y (Switchhook)
	B	←BK→	T
	RR	←R→	R

TABLE C

#### CONNECTION FOR 210G, H AND 212G, H COIN COLLECTORS WITH 685A SUBSCRIBER SET

Inside Wire from Protector or Line	685A Subset Terminals	Inside Wire from Subset to Coin Collector (Quad + Pair)	Coin Collector Terminals
Ring —R→	L1		
Tip —GN→	L2		
	R	←R→	TR
	GN	←GN→	W
	L1	←Y→	Y (Switchhook)
	B	←BK→	T
	RR	←R→	R

TABLE D

CONNECTIONS FOR 220C, D, G, H; 221C, D, G, H; 222C, D, G, H;  
AND 223C, D, G, H COIN COLLECTORS WITH 685A SUBSCRIBER SET

Inside Wire from Protector or Line	Coin Collector Terminals	Inside Wire from Coin Collector to Subset (Quad + Triple)	685A Subset Terminals
Ring —R→	Y (Switchhook)		
Tip —GN→	L		
Ground —Y→	Grd of Coin Relay		
	TR	←R→	R
	W	←GN→	GN
	R	←Y→	RR
	T	←BK→	B
	Y (Switchhook)	←R→	L1
	L	←GN→	L2

TABLE E

CONNECTIONS FOR 220C, D, G, H; 221C, D, G, H; 222C, D, G, H;  
AND 223C, D, G, H COIN COLLECTORS WITH 685B SUBSCRIBER SET

Inside Wire from Protector or Line	Coin Collector Terminals	Inside Wire from Coin Collector to Subset (Quad + Triple)	685B Subset Terminals
Ring —R→	Y (Switchhook)		
Tip —GN→	L		
Ground —Y→	Grd of Coin Relay		
	TR	←R→	R
	W	←GN→	GN
	R	←Y→	RR
	T	←BK→	B
	Y (Switchhook)	←R→	L1
	L	←GN→	L2
	Y (Coin Relay)	←Y→	K (S-36 Relay)

3.02 Connections for ringer leads in all  
sets are as follows:

Ringer Lead	Terminal
R	L2
BK	L1
SL	K
SL-R	1

#### 4.00 CIRCUIT DIAGRAMS

Circuit diagrams described in this  
section are illustrated in the following  
figures:

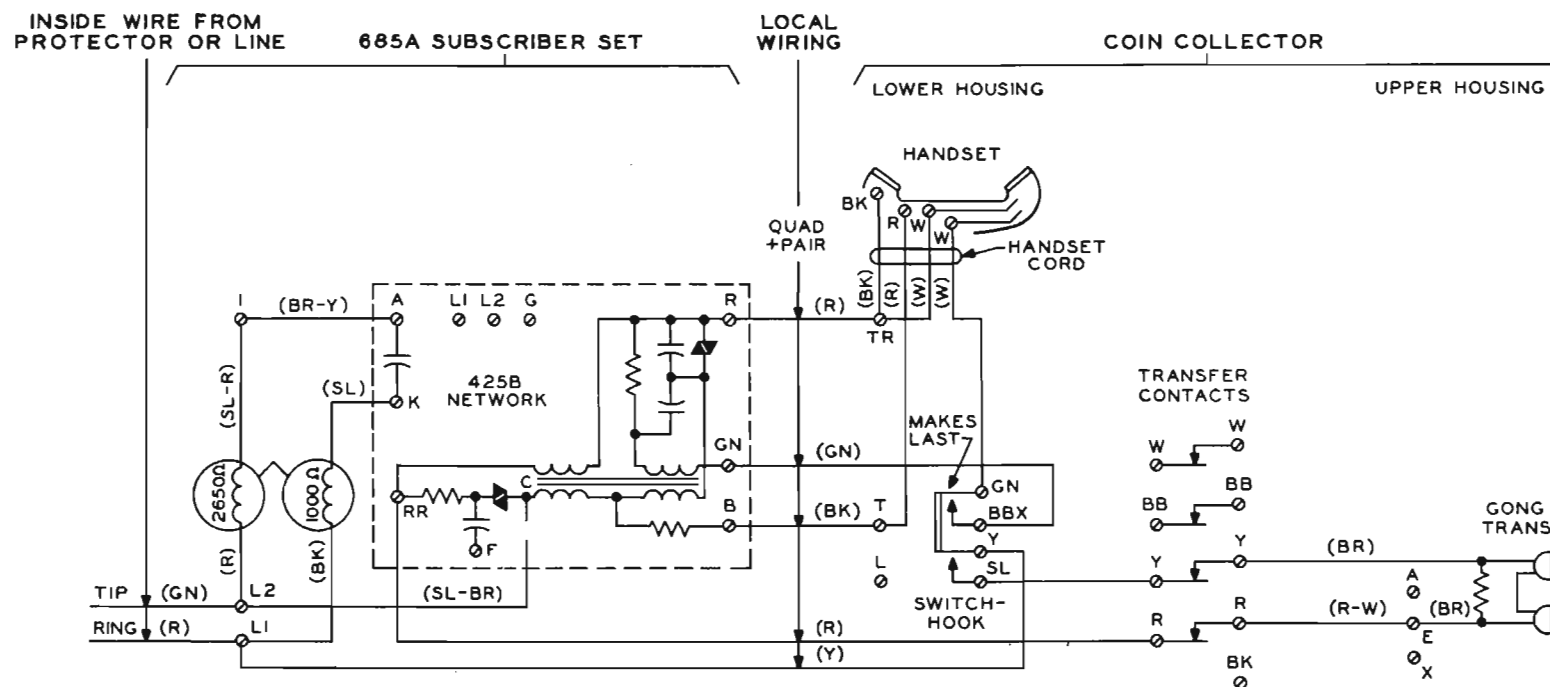


FIG. 1 - CIRCUIT DIAGRAM - 200C OR D COIN COLLECTOR WITH 685A SUBSCRIBER SET

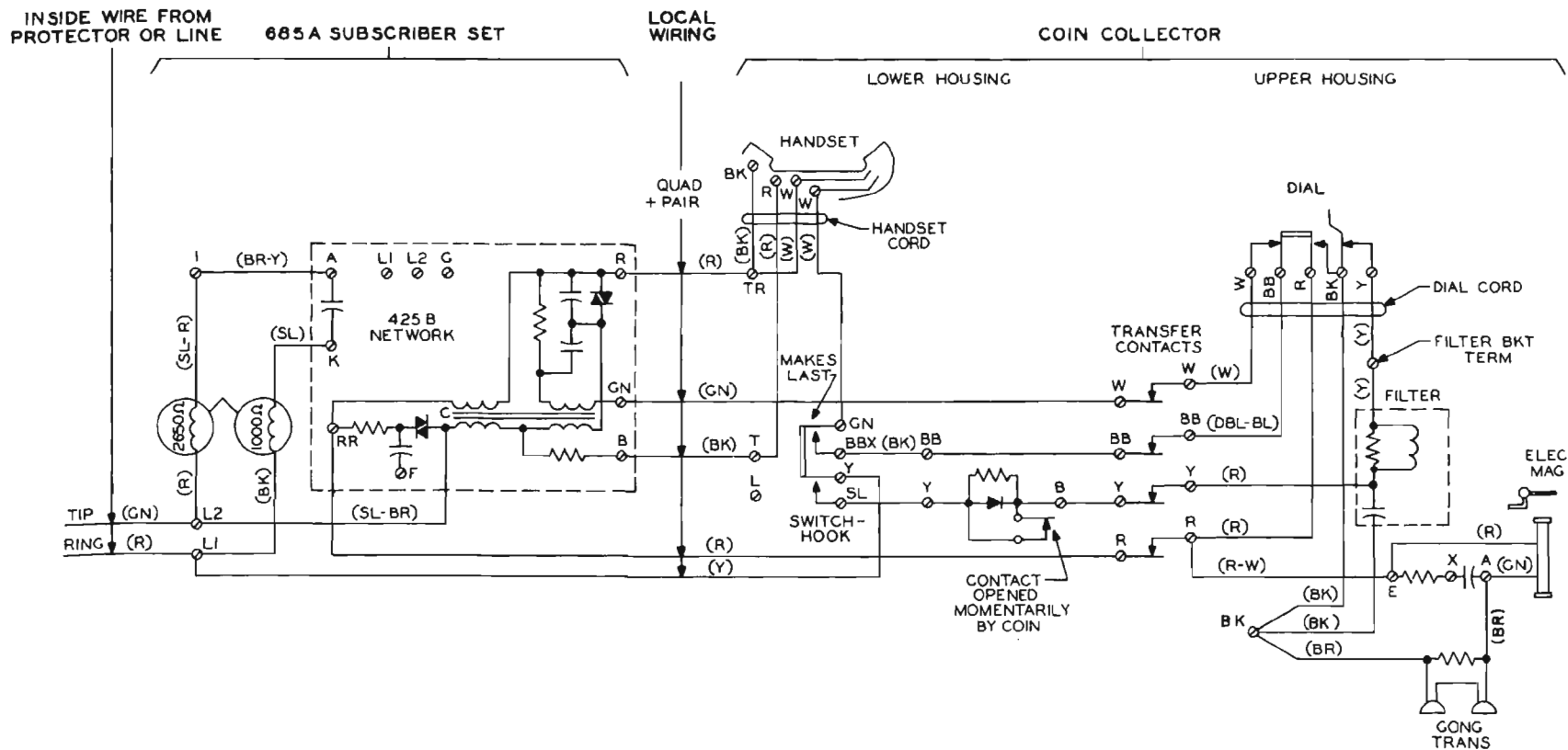


FIG. 2 - CIRCUIT DIAGRAM - 210- OR 212-TYPE COIN COLLECTOR  
WITH 685A SUBSCRIBER SET

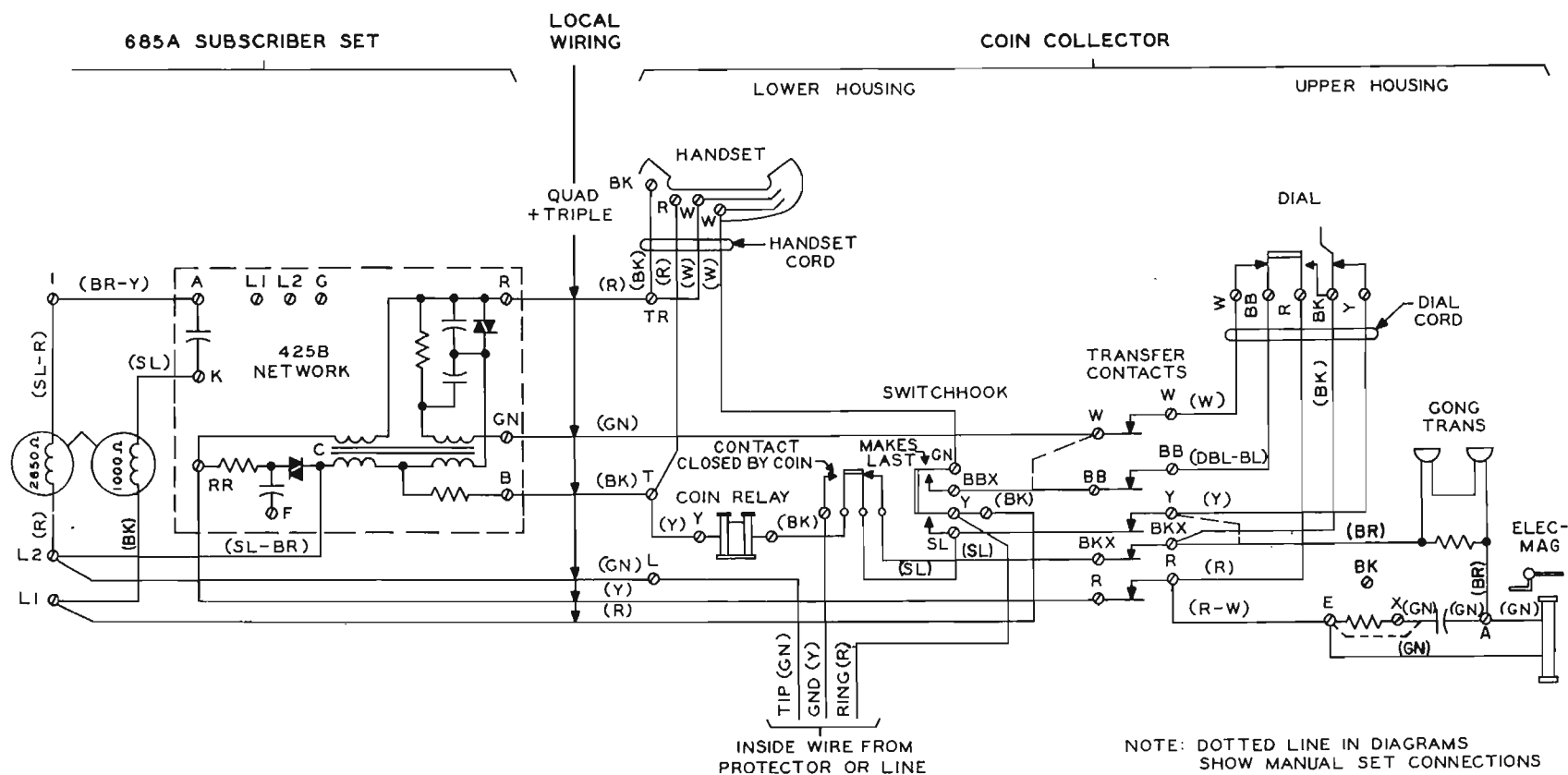


FIG. 3 - CIRCUIT DIAGRAM - 220-, 221-, 222-, 223-TYPE COIN COLLECTORS WITH 685A SUBSCRIBER SET