

TELEPHONE SETS
1702B-TYPE
CONNECTIONS

1. GENERAL

1.01 This section is reissued to:

- Revise connection information for tip party identification
- Include connection modifications which will prevent false billing due to incomplete hangup
- Provide polarity guard connections

Since this reissue covers a general revision, arrows ordinarily used to indicate changes have been omitted.

2. CONNECTION INDEX

Table A — Line Connections For Bridged and Ring Party Service

Table B — Line and Ringer Connections For Tip Party Service

Table C — Polarity Guard Connections For Nonkey Telephone Systems (D-180229 Kit of Parts)

Table D — Modification For 1A1 or 1A2 Key Telephone System

Fig. 1 — 1702B Telephone Set (Current Production) Using 25P4 Dial and 4010D Network

Fig. 2 — 1702B Telephone Set (Early Production) Using 25H4 Dial and 4010B Network

Fig. 3 — 1702B Telephone Set Modified For 2650-Ohm Tip Party Identification — Prevention of False Billing Due to Incomplete Hangup

Fig. 4 — 1702B Telephone Set, Wired For 1A1 or 1A2 Key Telephone System

Note: To silence ringer for all classes of service remove (R) ringer lead from **K** of network; insulate and store.

TABLE A

LINE CONNECTIONS FOR BRIDGED AND RING PARTY SERVICE

WIRE OR LEAD		COLOR	INDIVIDUAL OR BRIDGED	RING PARTY
D5AK Mtg. Cord at Conn. Block		(R)	R	R
		(G)	G	G
		(Y)	G	Y
		(BK)	B	B
		(W)	Y	Y
Inside Wire at Conn. Block	Ring	(R)	R	R
	Tip	(G)	G	G
	Grd.	(Y)	Y	Y
Conn. For Dial Light Trnsf at Conn. Block			Y	Y
			B	B

Note: Sets are shop wired for ring party or bridged service. See Table B for modification of set for tip party service.

TABLE B

LINE AND RINGER CONNECTIONS FOR TIP PARTY SERVICE

WIRE OR LEAD	COLOR	NO. IDENT GROUND	IDENT GROUND	
			1000 OHM	2650 OHM
Ringer at Net.	(S-R)	*	*	L1
	(S)	*	L1	*
Line Switch at Net.	(BR) [S-BR]	F	F	F
	(W) [S-W]	C	B	B
D5AK Cord at Net.	(G)	L1	C	C
D5AK Cord at Conn. Block	(R)	G	G	G
	(G)	R	R	R
	(Y)	Y	Y	Y
	(BK)	B	B	B
	(W)	Y	Y	Y

* Insulated and stored

() Current color code

[] JMD color code

Notes: 1. See Table A for inside wiring and dial light transformer lead connections at connecting block.

2. If (BK) strap is present between network terms. H and A remove from A; insulate and store.

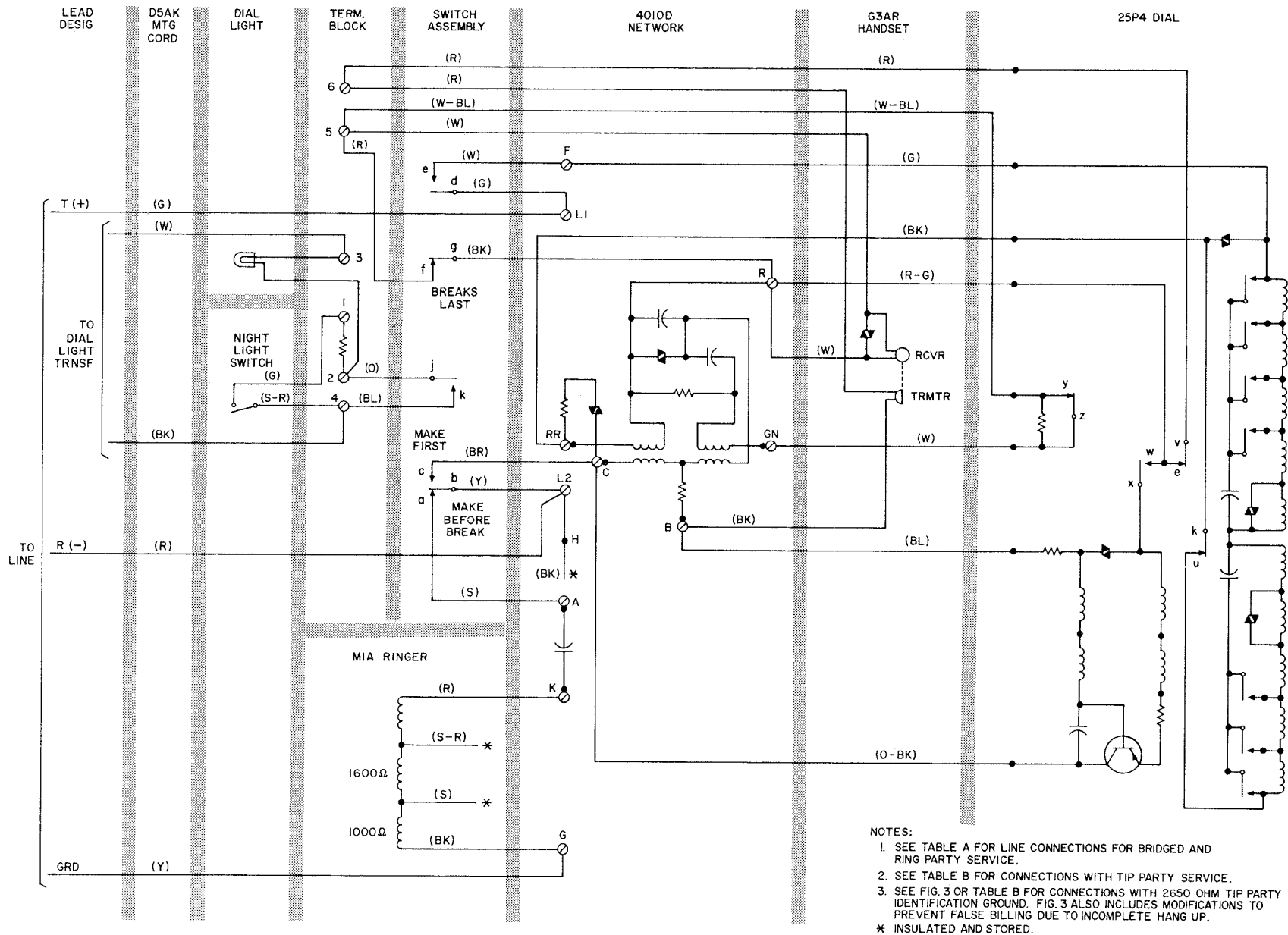


Fig. 1 — 1702B Telephone Set (Current Production) Using 25P4 Dial and 4010D Network

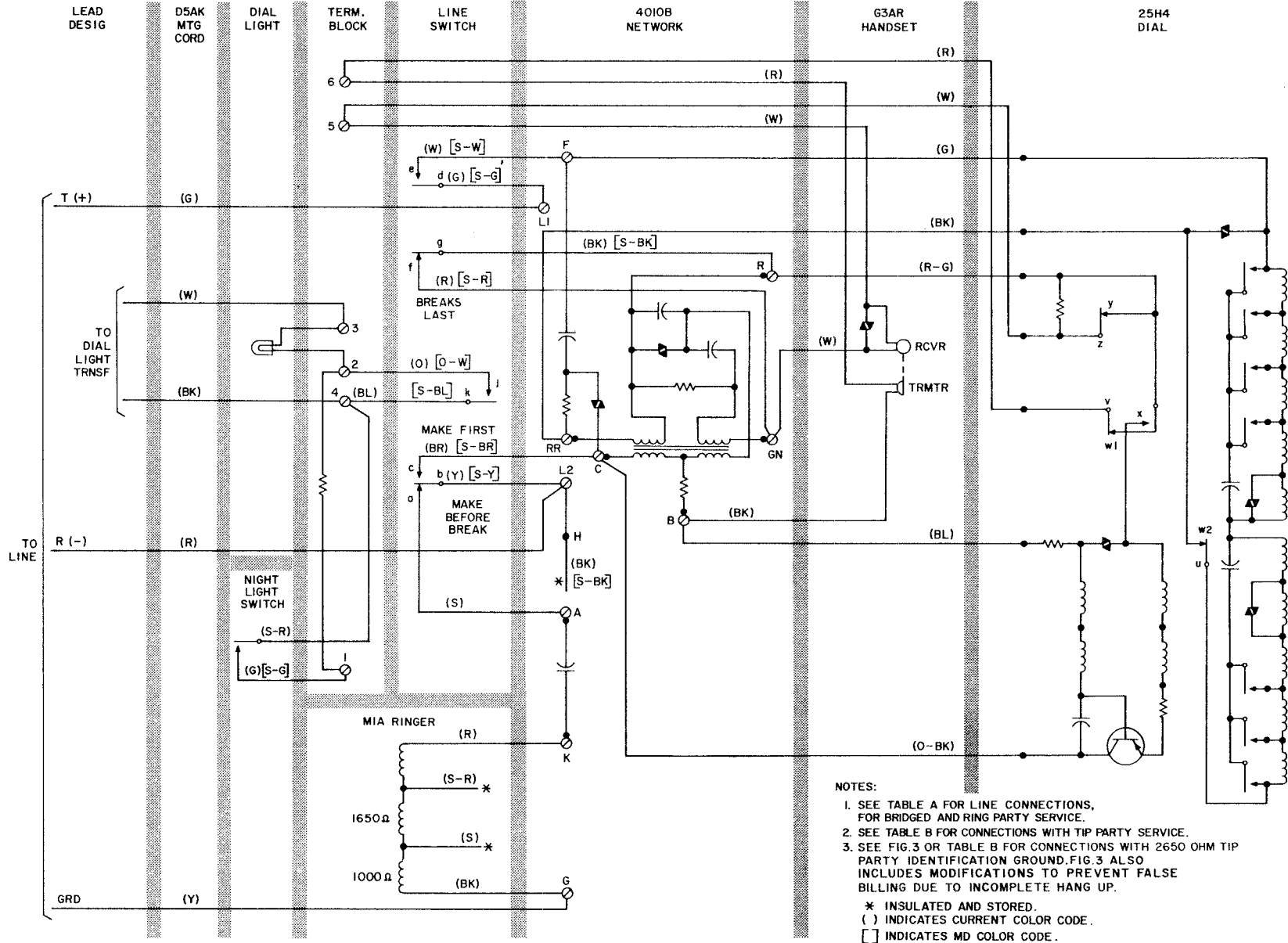


Fig. 2 — 1702B Telephone Set (Early Production) Using 25H4 Dial and 4010B Network

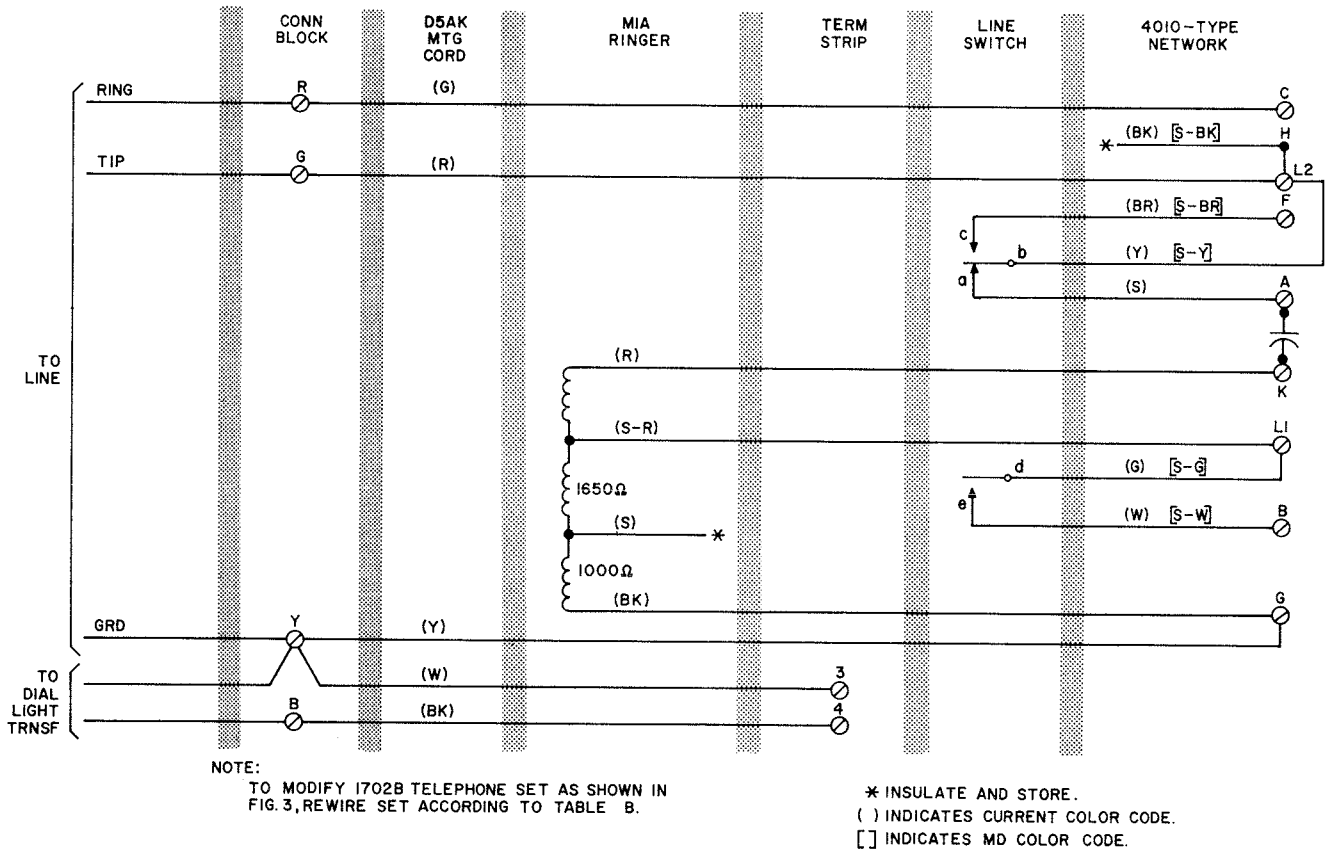


Fig. 3 — 1702B Telephone Set, Wired Line For 2650 ohm Tip Party Identification Ground

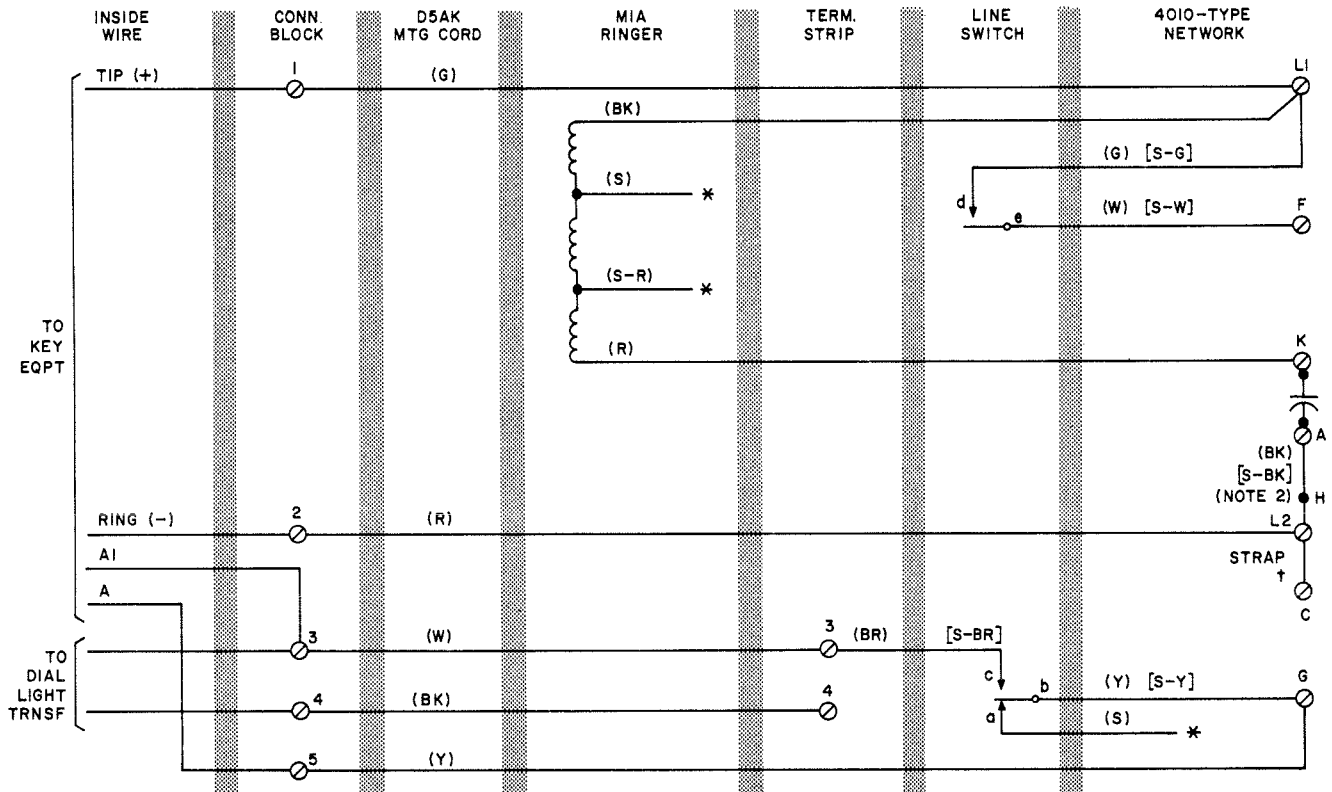
TABLE C
POLARITY GUARD CONNECTIONS FOR NONKEY TELEPHONE SYSTEMS
(D-180229 KIT OF PARTS)

WIRE OR LEAD	COLOR	REMOVE FROM NETWORK	CONNECT TO	
			NETWORK	TERM BOARD*
Dial	BK	RR		3
Line Switch	(BR) [S-BR] ①	C		4
	(W) [S-W] ②			
D5AK Cord	(G) ③			
D-180229 Polarity Guard	(R)			3
	(BK)			4
	(G)		RR	
	(W)		C	

* Component of polarity guard assembly
 ① If wired for ring or bridged service
 ② If wired for tip party (no identification ground)
 ③ If wired for tip party (with identification ground)

() Current color code
 [] MD color code
 Note: Install polarity guard assembly only when specified by local instructions for end-to-end signaling.

SECTION 502-710-433



NOTE:

1. TO MODIFY 1702B TELEPHONE SET AS SHOWN IN FIG. 4, REWIRE SET ACCORDING TO TABLE D.
2. CHECK THAT (BK) [S-BK] STRAP IS TERMINATED ON (A) OF NETWORK, SETS OF LATER MANUFACTURE HAVE THIS LEAD INSULATED AND STORED.

- * INSULATED AND STORED
- † USE MIW CORD OR EQUIVALENT
- () INDICATES CURRENT COLOR CODE
- [] INDICATES MD COLOR CODE

Fig. 4 — 1702B Telephone Set, Wired for 1A1 or 1A2 Key Telephone System

TABLE D
MODIFICATION FOR 1A1 OR 1A2 KEY TELEPHONE SYSTEM

WIRE OR LEAD	COLOR	REMOVE FROM NET.	CONNECT TO	
			NET.	TERM STRIP
Line Switch	(Y) [S-Y]	L2	G	
	(BR) [S-BR]	C		3
	(S)	A	Insulate and store	
Ringer	(BK)	G	L1	
Strap	*		C ↔ L2	
Network Strap	(BK)	Stored Location	A	

* MIW cord or equivalent. Do not use strap if polarity guard is to be installed.

() Current color code

[] MD color code



To prevent false holding condition when handset is restored; switch contacts de must break before cb break.

Note: Install polarity guard (D-180229 Kit of Parts) only if specified by local instructions for end-to-end signaling.

Polarity Guard Lead Connections

- (BK) to L2 on network (G) to RR on network
- (W) to C on network (R) to 3 of polarity guard term. strip

Remove (BK) dial lead from RR on network and connect to 3 of polarity guard term. strip.