

SERVICE

2500M AND 2500MM TELEPHONE SETS

CONNECTIONS

1. GENERAL

1.01 This section contains information on the 2500M (MD) and 2500MM telephone sets (Fig. 1 and 2).

1.02 Reissued to:

- Revise Fig. 1 and 2
- Revise Table A
- Add information on common audible ringing and polarity guard

- Show 2500M telephone set MD.

1.03 ♦ An optional common audible ringing feature is available with these sets. When this feature is desired, two additional line conductors are required. Refer to Table A for connection information.

1.04 When polarity guard is required in these sets connect guard assembly as shown in Table B.♦

♦ TABLE A ♦

LINE AND RINGER CONNECTIONS
FOR COMMON AUDIBLE RING WITH 1A1 OR 1A2 KTS

LINE WIRE LEAD DESIGNATION AT CONNECTING BLOCK (NOTE 1)						CONNECTIONS IN SET							
						6-CONDUCTOR MOUNTING CORD OR 6-CONDUCTOR JACK LEADS (NOTE 2)						C48 RINGER LEADS	
(G)	(R)	(BK)	(Y)	(BL)	(W)	(G)	(R)	(BK)	(Y)	(BL)	(W)	(BK)	(R)
Tip	Ring	A	A1	B1	R1	F	A	L1	G	L2	Note 3	L2	Note 3

Note 1: Sets are furnished wired for 1A1 or 1A2 KTS with bridged ringing.

Note 2: If set is equipped with a 4-conductor mounting cord (Fig. 1 and 2) replace with a 6-conductor mounting cord.

Note 3: Use D-161488 connector to connect the (R) ringer lead to the (W) mounting cord or jack lead.

NOTICE

Not for use or disclosure outside the
Bell System except under written agreement

TABLE B

POLARITY GUARD CONNECTIONS
[819040528 (P-90D052) GUARD ASSEMBLY]

LEAD	COLOR	REMOVE FROM NET.	CONNECT TO	
			POLARITY GUARD	NET
Line Switch	W	C	S	
Dial	BK	RR	T	
Polarity Guard	W			C
	G			RR

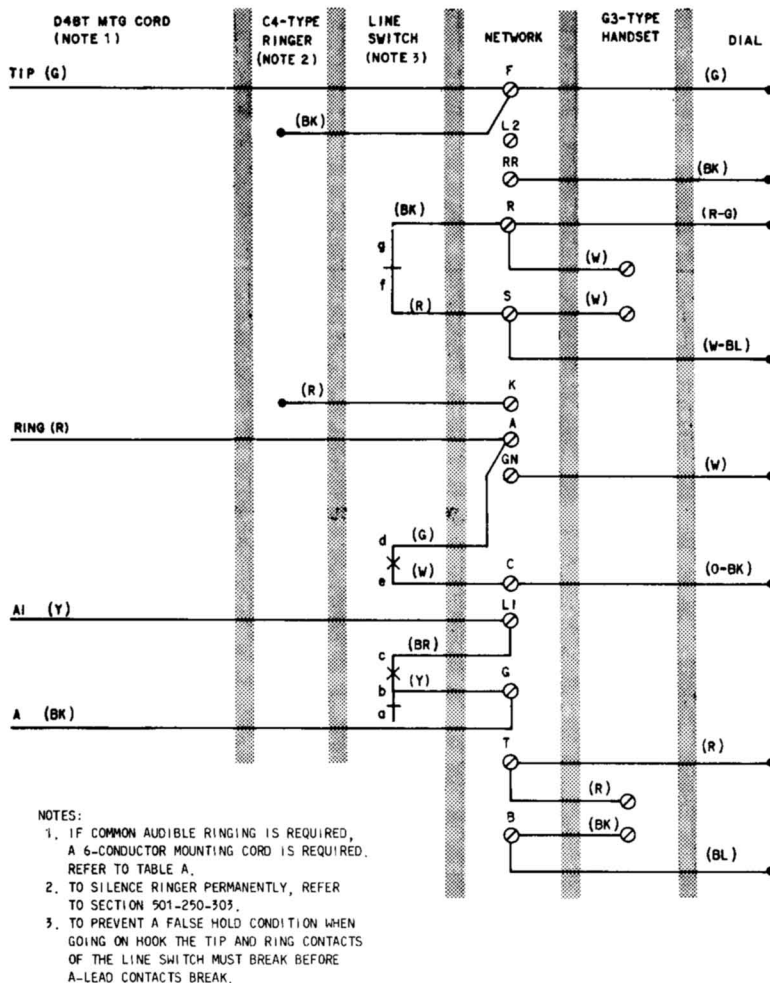


Fig. 1—2500M (MD) Telephone Set, Connections

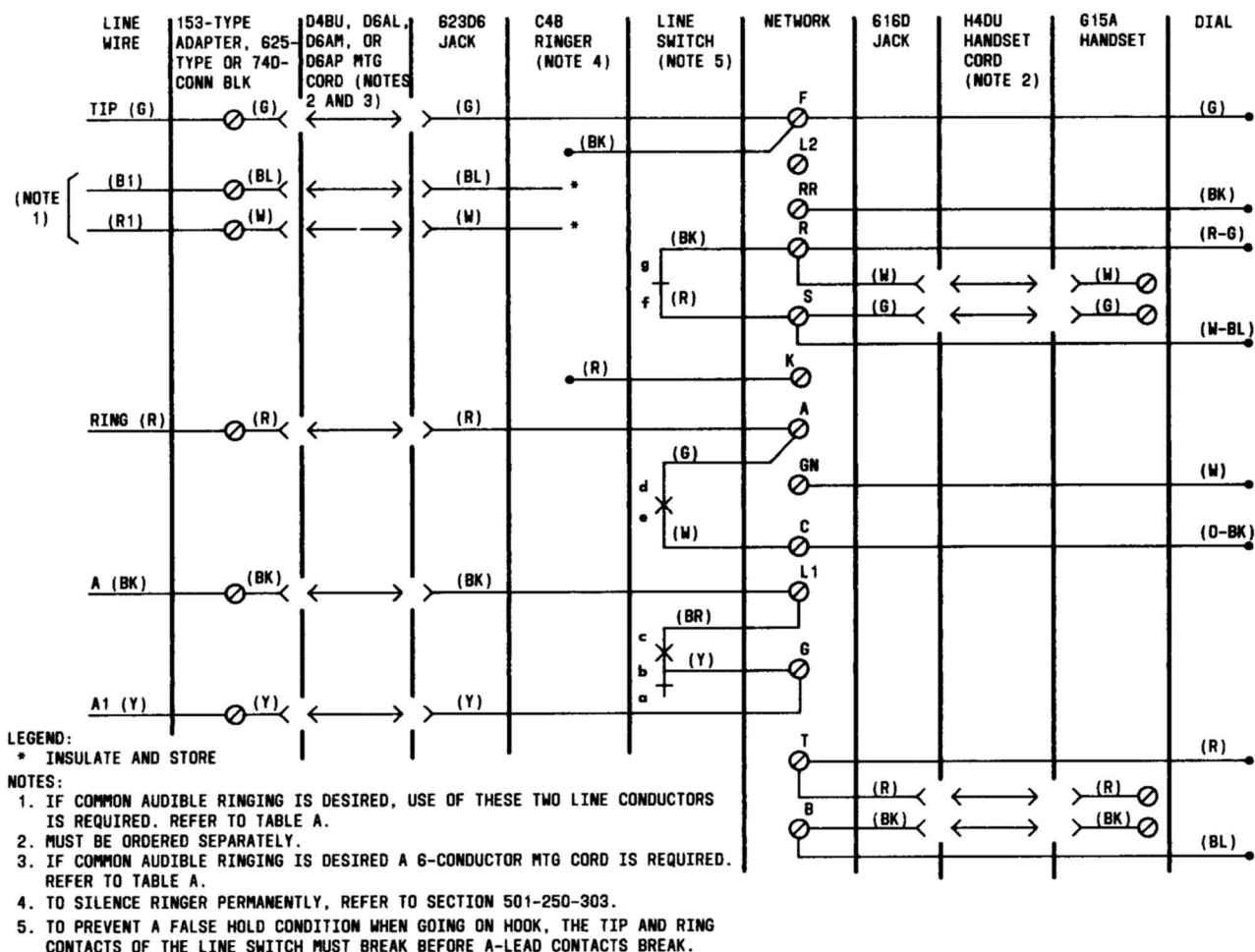


Fig. 2—2500MM Telephone Set, Connections