

## KS-19261

### LIGHT CONTROLS

### IDENTIFICATION, INSTALLATION, AND MAINTENANCE

#### 1. GENERAL

1.01 This section is reissued to:

- Change signs from TELEPHONE to phone
- Change wiring diagram on KS-19261, List 3 light control unit

#### 2. IDENTIFICATION

2.01 The KS-19261 light control units are used to control the lights in outdoor telephone booths and mountings.

2.02 The light control units are designed to operate the lamp(s) when exposed to a light level of not less than three-foot candles; the lamp(s) will be extinguished at a light level of 10 or more foot candles.



*The unit will not control fixtures exceeding 500 watts.*

2.03 The KS-19261, List 1 light control unit (Fig. 1) is used in outdoor booths equipped with a KS-19207 light and blower unit.

2.04 The KS-19261, List 2 light control unit (Fig. 2) is used in outdoor booths equipped with light units other than a KS-19207 light and blower unit.

2.05 The KS-19261, List 3 light control unit (Fig. 3) is used in the KS-19426 walk-up, drive-up mounting.



*Prior to beginning Installation procedures, personnel responsible should familiarize themselves with the following outline. The outline provides a comprehensive view of the numerous arrangements and the paragraph sequence in which they appear.*

#### PARAGRAPH

#### TEXT CONTENT

3	INSTALLATION (SINGLE BOOTH)
3.01	List 1 unit in KS-16797 booth
3.02	List 1 unit in KS-14611 booth
3.03	List 1 unit in KS-19425 or KS-19580 booth
3.04	List 2 unit in KS-16797 booth
3.05	List 2 unit in KS-14611 booth
3.06	List 3 unit in KS-19426 mounting
4	INSTALLATION (MULTIPLE BOOTHS)
4.01 — 4.06	List 1 unit in booths without blowers
4.07 — 4.12	List 1 unit in booths with blowers
4.13 — 4.15	List 2 unit in KS-14611 or KS-16797 booths
4.16 — 4.18	List 3 unit in KS-19426 mounting

#### 3. INSTALLATION (SINGLE BOOTH)

##### LIST 1 UNIT

3.01 Install List 1 unit in KS-16797 universal booth, equipped with KS-19207 light and blower unit, as follows:



*Use eye protection for the following operations.*

- (a) Remove power cord from receptacle.
- (b) Lower the dome as shown in Fig. 4 and remove lamp(s).
- (c) Release roof fasteners and remove roof from booth.
- (d) Remove knockout from side of light fixture (Fig. 5) and install control unit as shown.

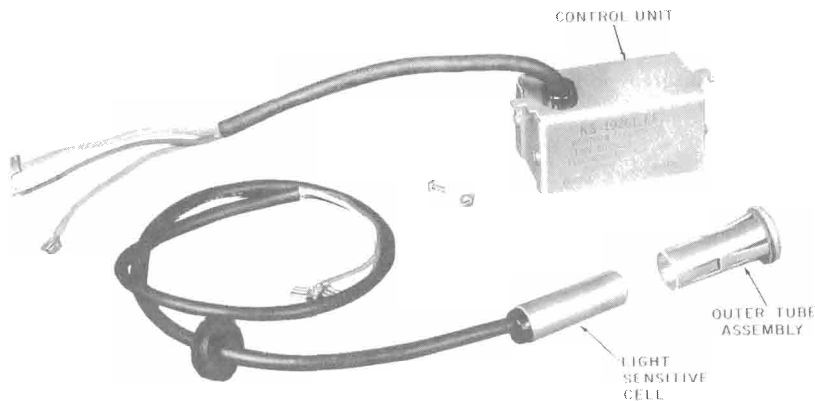


*The light cell is mounted in the right-front corner of the roof. Some booths have a plug or knockout for this purpose. If a plug or knockout does not exist, drill one 11/16-inch diameter hole in the roof as shown in Fig. 6. A Greenlee knockout punch should be used if available.*

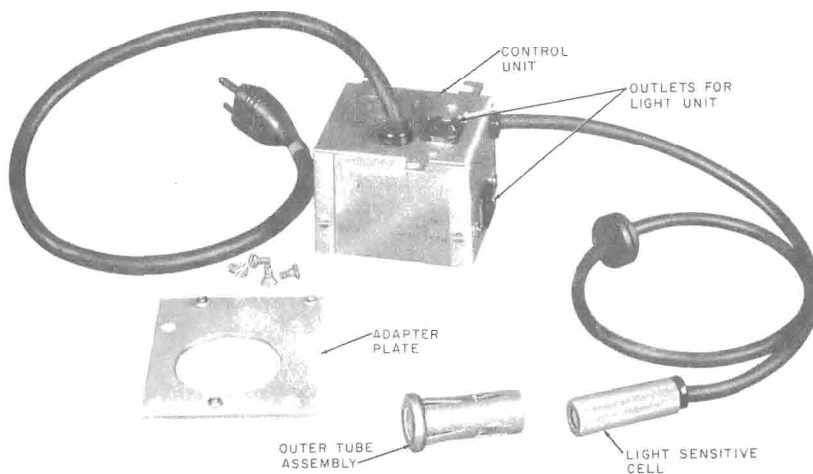
- (e) Insert outer tube assembly (Fig. 1) through 11/16-inch hole in roof from outside until tabs lock behind edge of hole (Fig. 7).

- (f) Remove terminal board cover and connect control unit wiring to terminals as follows:

Wire Color	Connect to Terminal
W	9
R	4
BK	1



**Fig. 1—KS-19261, List 1 Light Control Unit**



**Fig. 2—KS-19261, List 2 Light Control Unit**

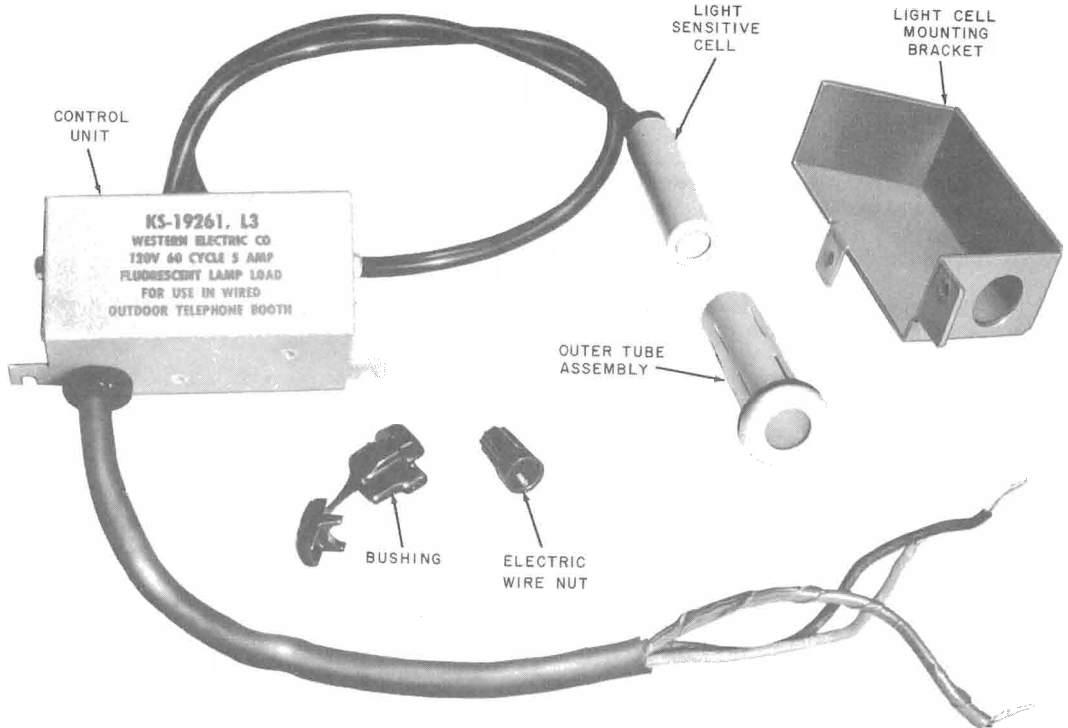


Fig. 3—KS-19261, List 3 Light Control Unit



Fig. 4—Dome in Lowered Position (KS-14611 or KS-16797 Booth)↓

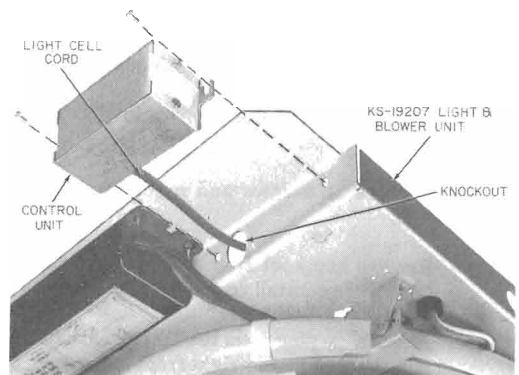


Fig. 5—Installation of List 1 Light Control Unit on Light Fixture

- (g) Connect light cell wiring to terminals as follows:

Wire Color	Connect to Terminal
WH	13
BK	9

- (h) Remove strap wire from between terminals 1 and 4 of terminal strip.
- (i) Install terminal board cover.
- (j) Place roof on booth and insert light sensitive cell fully into outer shell.
- (k) Secure roof to booth.
- (l) Install lamp(s) and fasten dome.
- (m) Connect power cord to receptacle.

(n) Cover light cell to exclude light. Lamps should light within two minutes. If lamps do not light, check wiring and refer to Part 5.

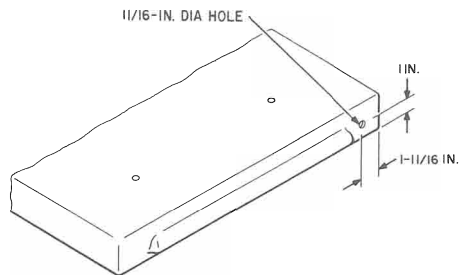
**3.02** Install List 1 unit in KS-14611 outdoor booth, equipped with KS-19207 light unit, as follows:

- (a) Perform the operations outlined in 3.01 except when an 11/16-inch diameter hole has to be drilled in the roof for the light cell, use the locating dimensions shown in Fig. 8.

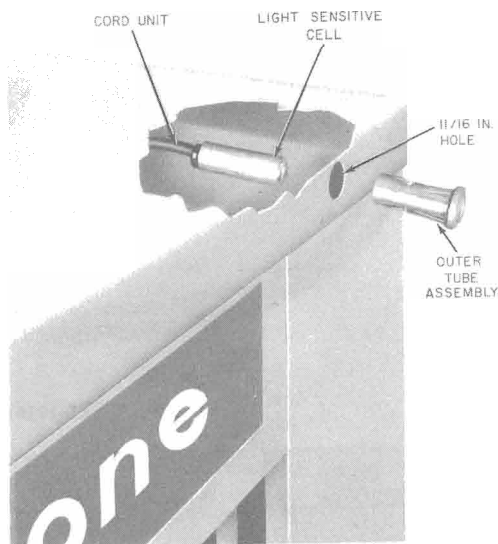
**3.03** Install List 1 unit in KS-19425 or KS-19580 telephone booth as follows:

**THINK** Use eye protection for the following operations.

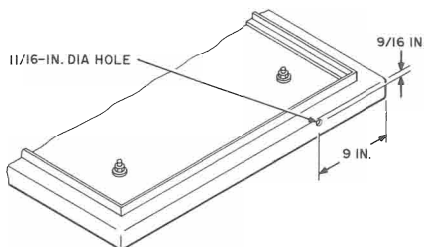
- (a) Remove power cord from receptacle.
- (b) Remove the dome as shown in Fig. 9 and remove lamps.
- (c) Remove 12 screws and move roof to one side.
- (d) Remove knockout from rear of light fixture (Fig. 5) and install control unit as shown.
- (e) Remove the plug from the 11/16-inch diameter hole located in the right-front-top corner of the booth.
- (f) Perform operations outlined in 3.01(e) through (n).



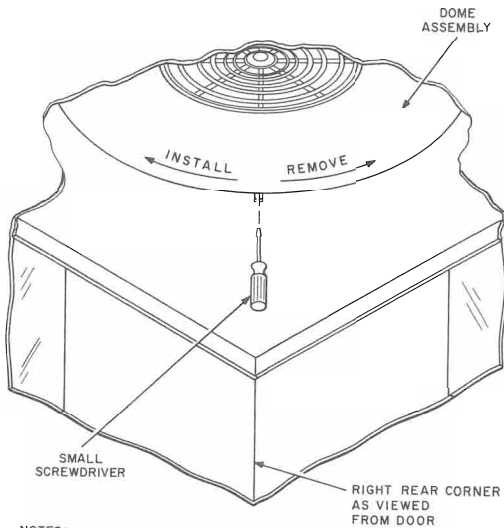
**Fig. 6—Locating Hole in Roof of KS-16797 Booth for Light Cell**



**Fig. 7—Method of Installing Light Cell**



**Fig. 8—Locating Hole in Roof of KS-14611 Booth for Light Cell**



## NOTES:

1. FOR REMOVAL, INSERT SMALL SCREWDRIVER THROUGH SLOT IN CEILING, DEPRESS DETENT SPRING, AND TURN DOME ASSEMBLY COUNTERCLOCKWISE.
2. FOR INSTALLATION, PLACE DOME ASSEMBLY IN CEILING AND TURN IT CLOCKWISE UNTIL DETENT SPRING ENGAGES AND LOCKS DOME.

**Fig. 9—Method of Removing Dome Assembly**

## LIST 2 UNIT

**3.04** Install List 2 unit in KS-16797 universal booth equipped with B-185379 light fixture as follows:



*Use eye protection for the following operations.*

- (a) Remove power cord from receptacle.
- (b) Lower the dome as shown in Fig. 4, unplug light fixture, and remove lamps.
- (c) Remove roof retaining nuts and cord plate.
- (d) Remove light fixture and cord mounting plate and set it aside.
- (e) Remove roof from booth.



*The light cell is mounted in the right-front corner of the roof. Some booths have a plug or knockout for this purpose. If a plug or knockout does not exist, drill one 11/16-inch-diameter hole in the roof as shown in Fig. 6. A Greenlee knockout punch should be used if available.*

- (f) Secure light control adapter plate on ceiling where cord plate was removed (Fig. 10). This adapter plate must be placed with the two control unit mounting bolts toward the left rear corner of booth.
- (g) Locate and drill one 11/16-inch diameter hole in the ceiling as shown in Fig. 10.
- (h) Push light cell and cord through hole drilled in ceiling and secure grommet. Push the power cord through 2-inch hole and attach control unit to adapter plate (Fig. 11).
- (i) Place outer tube assembly (Fig. 2) through roof hole from outside until the tabs lock behind edge of hole (Fig. 7).
- (j) Place control unit power cord plug near receptacle so that it may be reached from inside of booth.
- (k) Place light cell into shell and put roof into position.
- (l) Bend light unit cord plate and wedge under ballast (Fig. 12).
- (m) Hold light fixture near ceiling and plug light cord into ceiling unit. Position light fixture so that ballast lies along the diagonal from left to rear right booth (starters toward left rear of booth).
- (n) Secure light assembly and roof, replace lamps, and plug control unit into receptacle.
- (o) Secure dome and plug power cord into receptacle.
- (p) Cover light cell to exclude light. Lamps should light within two minutes.

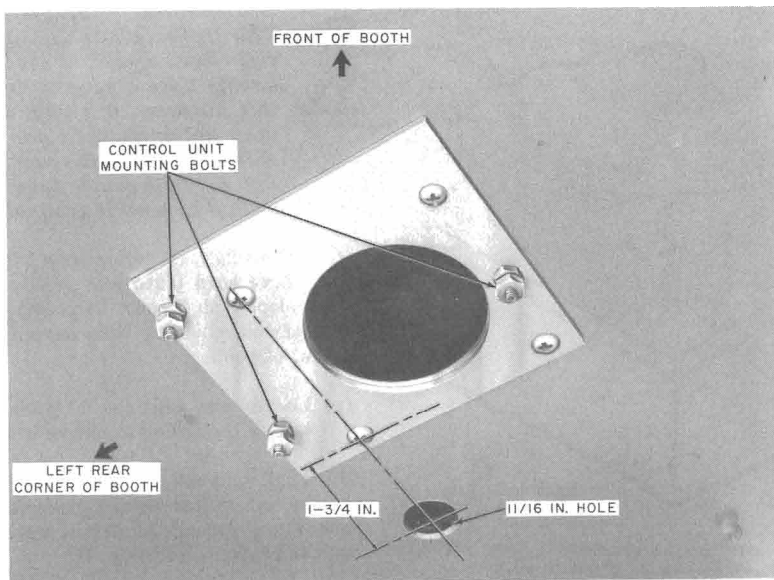


Fig. 10—Installation of Adapter Plate to Ceiling of KS-16797 Booth

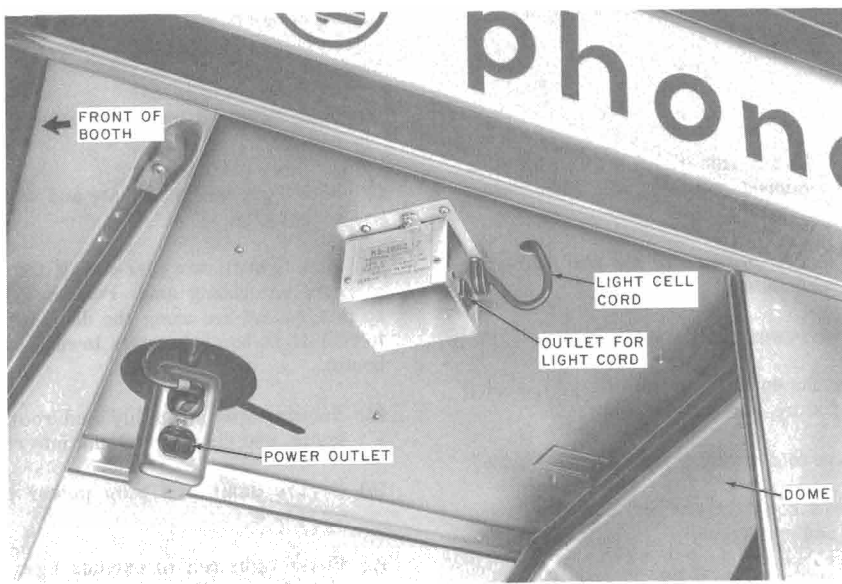


Fig. 11—Position of Light Control on Ceiling of KS-16797 Booth

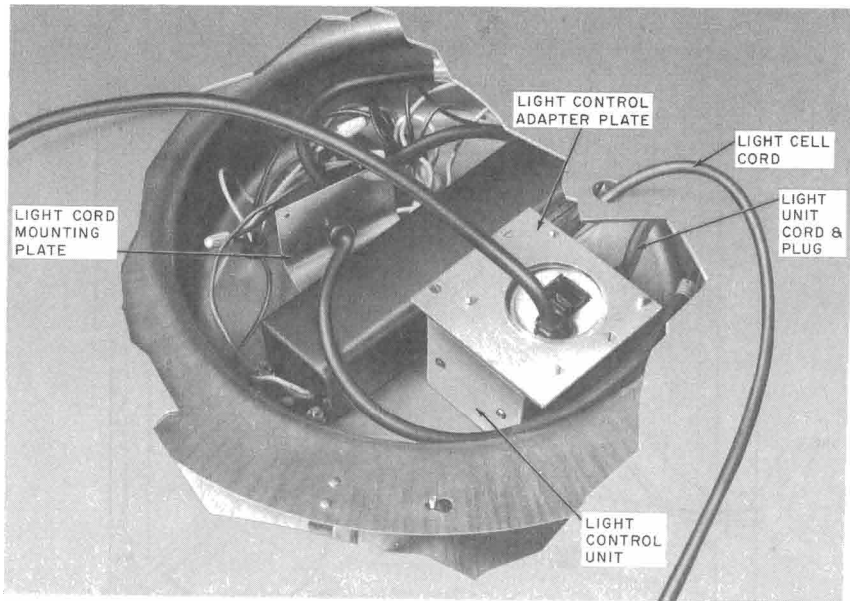


Fig. 12—Position of Light Control in Light Fixture

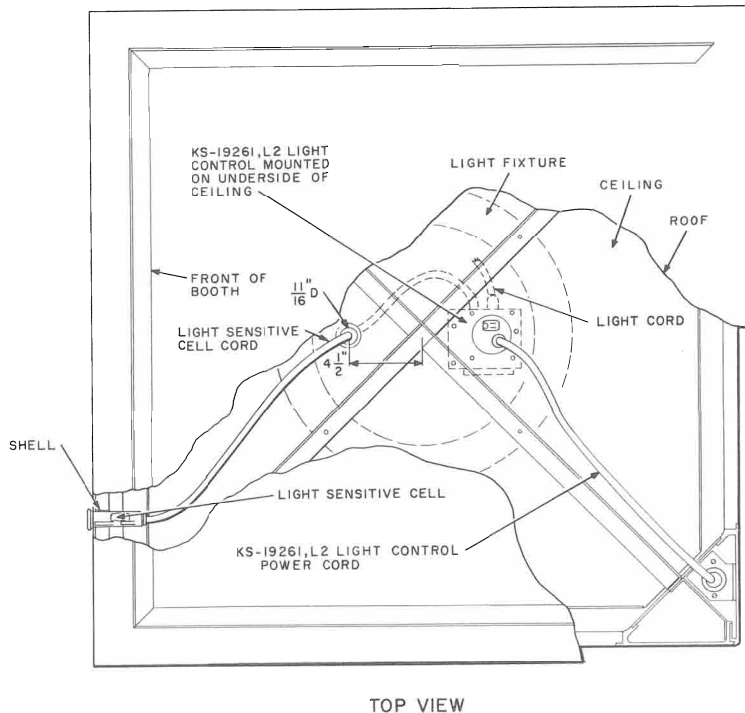
**3.05** Install List 2 unit in KS-14611 outdoor booth, equipped with B-185379 light fixture as follows:

**THINK** Use eye protection for the following operations.

- (a) Remove power cord from receptacle.
- (b) Lower the dome as shown in Fig. 4, unplug light fixture, and remove lamps.
- (c) Remove top access plate located in right-rear inside corner, and remove light plug from receptacle.
- (d) Remove roof retaining nuts.
- (e) Remove light fixture and light fixture cord mounting plate.
- (f) Remove roof from booth.
- (g) Drill an 11/16-inch diameter hole down through ceiling 4-1/2 inches toward front of booth from center of cross braces (Fig. 13).
- (h) Attach light cell adapter plate to inside of ceiling so that the pair of light control unit mounting bolts are toward the front of booth (Fig. 14).
- (i) Place light control cord up through large hole and secure light control unit to adapter plate.



*The light cell is mounted in the right-front corner of the roof. Some booths have a plug or knockout for this purpose. If a plug or knockout does not exist, drill one 11/16-inch diameter hole in the roof as shown in Fig. 8. A Greenlee knockout punch should be used if available.*



**Fig. 13—Ceiling Layout of KS-14611 Booth (Top View)**

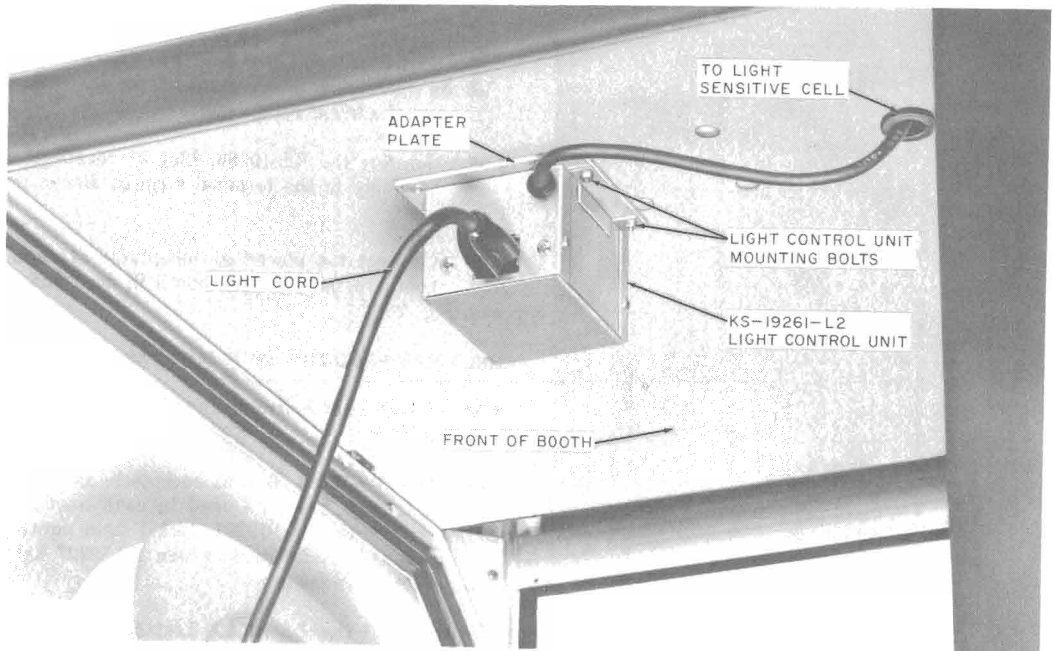
- (j) Place light cell up through previously drilled hole and insert grommet.
- (k) From top of booth, place light control unit cord plug into area of power receptacle.
- (l) Place outer tube assembly through roof hole from outside until tabs lock behind edge of hole (Fig. 7).
- (m) Place light cell into shell and put roof into position.
- (n) Bend light cord mounting plate and wedge it under ballast (Fig. 12).
- (o) Plug light cord into control unit (Fig. 14).
- (p) Replace lamps and roof retaining nuts.
- (q) Plug light control unit cord into receptacle and replace access plate.
- (r) Secure dome and plug the power cord into receptacle.
- (s) Cover light cell to exclude light. Lamps should light within two minutes. ♦If lamps do not light, check wiring and refer to Part 5.♦

#### **LIST 3 UNIT**

**3.06** Install List 3 unit in KS-19426 walk-up, drive-up mounting as follows:

- (a) Using KS-19192, List 1 wrench, remove four tamper proof screws, retainer bar, and the light shield from housing.
- (b) Remove coin telephone from housing.





**Fig. 14—Position of List 2 Light Control Unit on Ceiling of KS-14611 Booth**

- (c) Remove wire channel (Fig. 15) from right side of housing.
- (d) Install control unit in the upper portion of the housing on the bracket provided.
- (e) Connect control unit wires to electrical receptacle as shown in Fig. 16.
- (f) Run the light cell cable down the channel to the underside of the housing.
- (g) Install the wire channel, removed in (c), in its original position.
- (h) Install the light cell in the light cell mounting bracket as shown in Fig. 17.
- (i) Secure the bracket to the bottom of the housing as shown in Fig. 18.
- (j) Install the coin telephone.
- (k) Install light shield as follows:
  - (1) Slide light shield over the panel retaining channels and verify that shield is seated properly against gasket. Ensure that back edge of shield is engaged in KS-19426, List 34 top assembly, or B-564418 subset cover assembly (whichever is applicable).
  - (2) Install shield retainer bar across top of housing using four No. 10-24 by 1/2 tamper proof screws, and KS-19192, List 1 wrench.
  - (l) Cover light cell to exclude light. Lamps should light within two minutes. If lamps do not light, check wiring and refer to Part 5.

#### **4. INSTALLATION (MULTIPLE BOOTHS)**

**4.01** A KS-19261 light control unit may be used to control the lights in multiple installations of five or less booths.

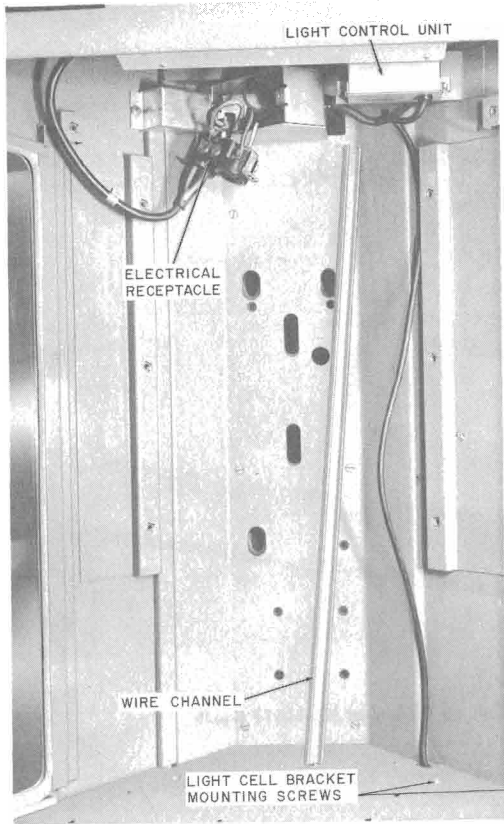


Fig. 15—Installation of List 3 Light Control Unit

#### LIST 1 UNIT IN BOOTHS WITHOUT BLOWERS

- 4.02 Install light control in first booth as directed in Part 3.
- 4.03 One KS-19580, List 51 receptacle assembly (Fig. 19), must be used in conjunction with a KS-19261, List 1 light control unit in multiple installations where KS-19207 light units without blowers are used.
- 4.04 Install the KS-19580, List 51 receptacle assembly above the ceiling area in first booth.



*The KS-19580 booth has a bracket provided for the receptacle assembly. In other type booths, install the assembly in any convenient area near electrical receptacle.*

- 4.05 Connect the KS-19580, List 51 receptacle assembly to the terminal strip as shown in Fig. 20.

- 4.06 Connect the electrical receptacle of each booth to the previous booth in accordance with Fig. 20.

#### LIST 1 UNIT IN BOOTHS WITH BLOWERS

- 4.07 Install light control in first booth as directed in Part 3.
- 4.08 One KS-19580, List 51 receptacle assembly (Fig. 19), must be used in each booth in conjunction with a KS-19261, List 1 light control unit in multiple installations where KS-19207 light and blower units are used.
- 4.09 Install the KS-19580, List 51 receptacle assembly above the ceiling area in each booth.



*The KS-19580 booth has a bracket provided for the receptacle assembly. In other type booths, install the assembly in any convenient area near electrical receptacle.*

- 4.10 Connect the KS-19580, List 51 receptacle assemblies to the terminal strips as shown in Fig. 21.

- 4.11 Connect the List 51 receptacle assembly of the second, third, fourth, and fifth booth to the List 51 receptacle assembly of the previous booth in accordance with Fig. 21.

- 4.12 Connect the electrical receptacle of the second, third, fourth, and fifth booth to the electrical receptacle of the previous booth in accordance with Fig. 21.

#### LIST 2 UNIT IN KS-14611 OR KS-16797 BOOTH

- 4.13 Install light control in first booth as directed in Part 3.

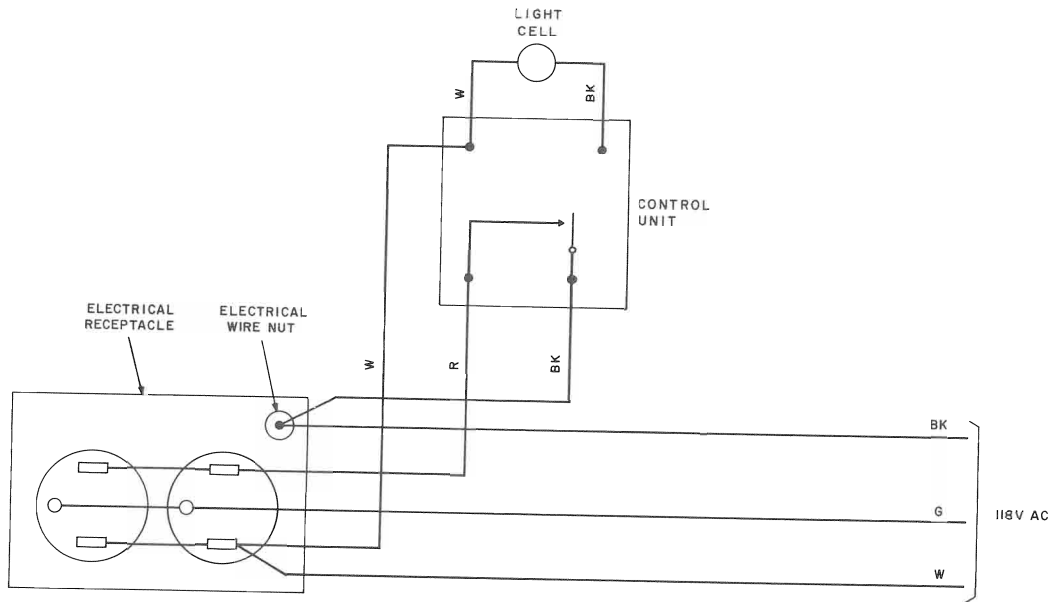


Fig. 16—Wiring Diagram of KS-19261, List 3 Light Control Unit

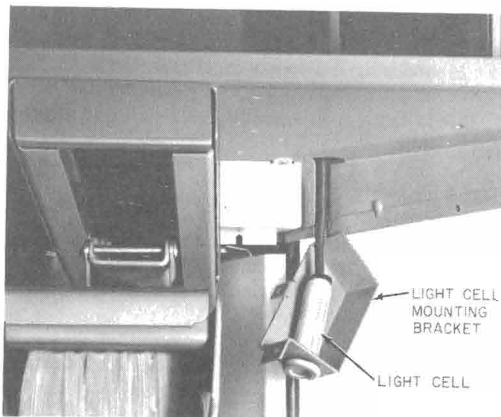


Fig. 17—Installation of Light Cell in Mounting Bracket

4.14 Plug power cord from electrical receptacle of second booth into extra outlet in light control unit of first booth.

4.15 Plug power cord from electrical receptacle of third, fourth, and fifth booth into electrical receptacle of previous booth.

#### LIST 3 UNIT IN KS-19426 MOUNTING

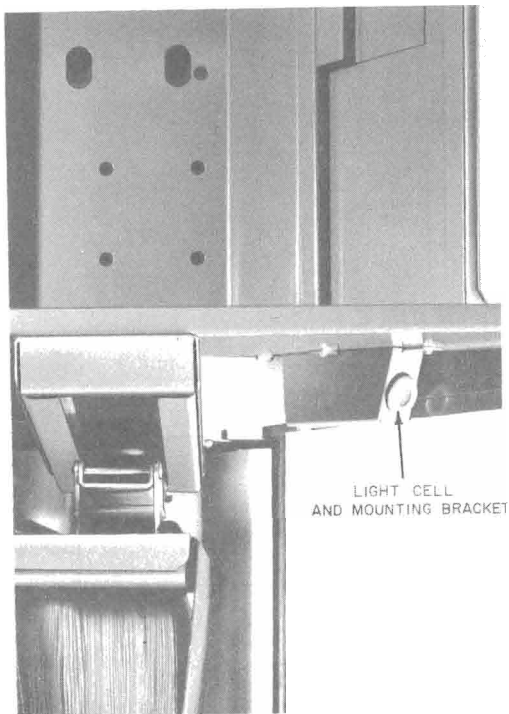
4.16 Install light control in first mounting as directed in Part 3.

4.17 Connect wires of control unit to electrical receptacle of prime mounting as shown in Fig. 16.



*The prime mounting is the one into which the outside power wiring is connected.*

4.18 Connect the electrical receptacle of each succeeding mounting to the electrical receptacle of previous mounting with approved No. 14 gauge wire.



**Fig. 18—Installation of Light Cell Mounting Bracket on KS-19426 Mounting**

## 5. MAINTENANCE

**5.01** Cover light cell to exclude light. If lamp(s) does not illuminate within two minutes, proceed as follows:

### LIST 1

- (a) Place a strap between terminals 1 and 4 in first mounting.



**Fig. 19—KS-19580, List 51 Receptacle Assembly**

- (b) If lamp(s) illuminates, remove strap and replace existing light control unit with a new light control unit.

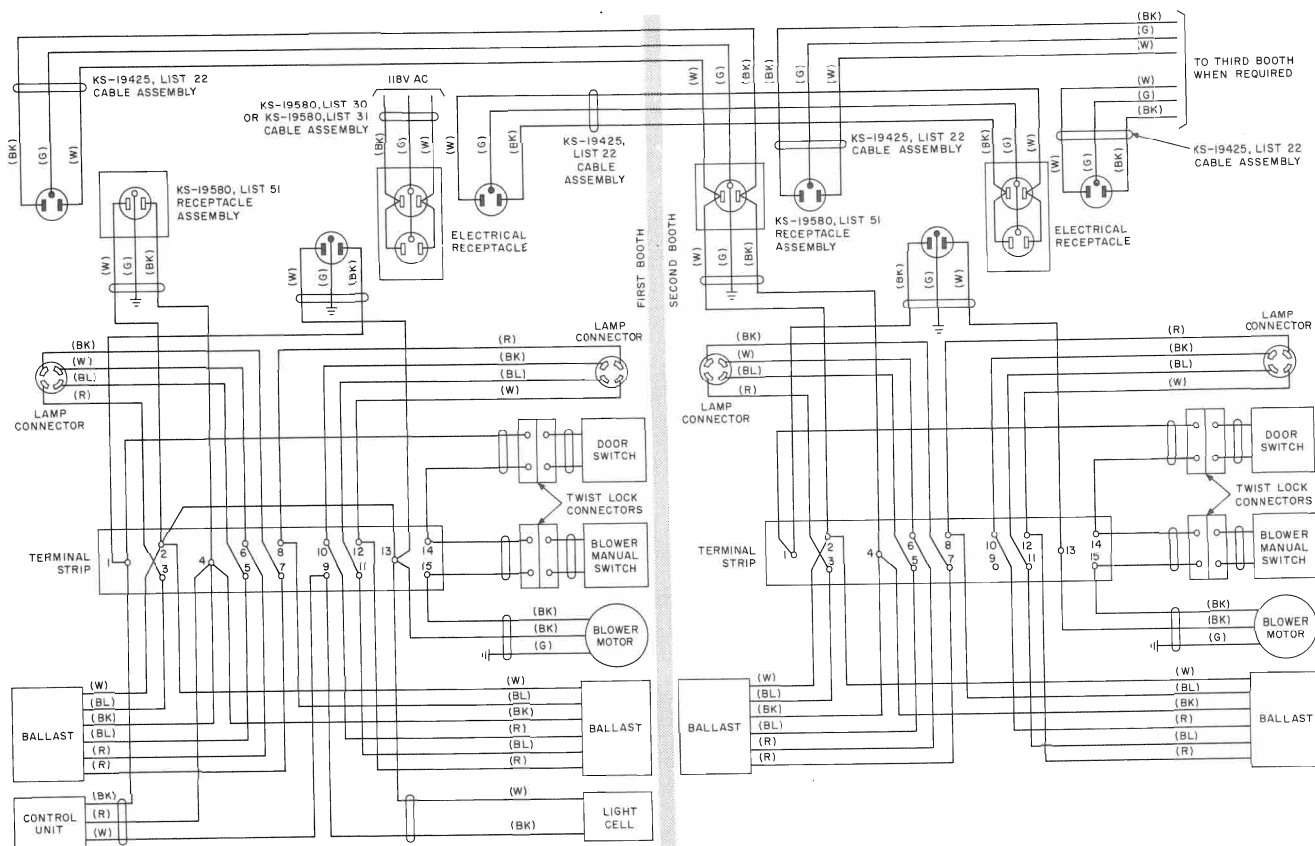
### LIST 2

- (a) Remove light plug from light control unit and plug it into electrical receptacle.
- (b) If lamp(s) illuminates, replace light control unit.

### LIST 3

- (a) Remove electric wire nut (Fig. 16) from black wires. Connect black wire from ac power source to electrical receptacle on terminal opposite white wire.
- (b) If lamp illuminates, replace light control unit.





NOTE:

FOR MULTIPLE INSTALLATIONS USING KS-19207 LIST 3 LIGHT AND BLOWER UNITS, AND USING A KS-19261 LIGHT CONTROL UNIT (MAXIMUM OF FIVE BOOTHS FOR EACH CONTROL UNIT), REMOVE THE STRAP WIRE FROM TERMINAL STRIP TERMINALS 1 AND 4 IN ALL BOOTHS. REMOVE THE STRAP WIRE FROM TERMINALS 2 AND 13 IN ALL BOOTHS EXCEPT FIRST BOOTH. INSTALL A KS-19580, LIST 51 RECEPTACLE ASSEMBLY IN EACH BOOTH. CONNECT LIST 51 RECEPTACLE OF SECOND, THIRD, FOURTH AND FIFTH BOOTHS TO LIST 51 RECEPTACLE OF PREVIOUS BOOTH USING KS-19425, LIST 22 CABLE ASSEMBLY. CONNECT ELECTRICAL RECEPTACLES IN SAME MANNER.

Fig. 21—Wiring Diagram of KS-19261 Light Control Unit Used In Multiple Installation with Blowers