

WALK-UP, DRIVE-UP PUBLIC TELEPHONES KS-19426 MOUNTING

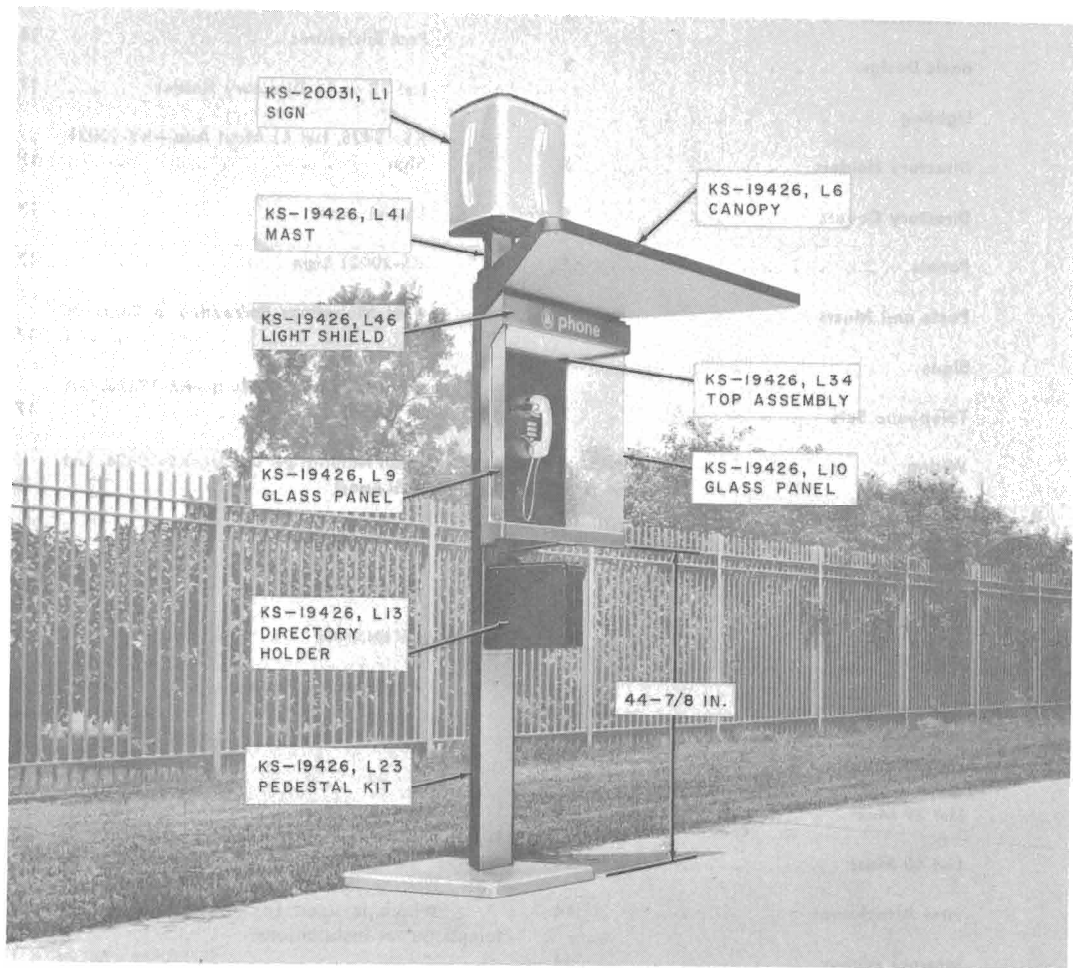


Fig. 1—KS-19426 Mounting for Walk-Up Outdoor Service with List 41 Mast and KS-20031 Illuminated Sign

CONTENTS	PAGE	CONTENTS	PAGE
1. GENERAL	2	Light Shield	16
2. IDENTIFICATION	2	List 32 and 33 Base Covers	16
Basic Design	3	Post Enclosures	16
Lighting	4	List 13 or 14 Directory Holder	17
Directory Holders	5	KS-19426, List 41 Mast And—KS-20031 Sign	17
Directory Covers	5	List 41 Mast	17
Panels	7	KS-20031 Sign	17
Posts and Masts	7	Post Mountings Embedded in Concrete	17
Signs	7	Wall Mountings, Using—KS-19426, List 4 Support	17
Telephone Sets	7	Wall Mountings, Using—KS-19426, List 4 Support	18
Wiring	8	Telephone Wiring	19
3. INSTALLATION	10	Electric Wiring	19
Pedestal Mounting	10	4. MAINTENANCE	20
Base	10	Replacement Parts	23
Post	10		
List 1 Housing	13	1. GENERAL	
List 6 Canopy	13	1.01 This section describes the KS-19426 mounting which is used for walk-up, drive-up coin telephone set installations.	
List 39 Mast	14	1.02 Information contained in this section was formerly found in Sections 508-470-100 and 508-470-200 which are hereby canceled.	
List 40 Mast	14	2. IDENTIFICATION	
First Attachment	14	2.01 Table A describes the list numbers and parts available for the KS-19426 mounting. Use the appropriate list number for ordering information. Table B describes post and pedestal requirements.	
Internal Wiring	14		
Side Panels	14		
List 34 Top Assembly	15		
List 7 Installation Kit	15		
List 8 Installation Kit	15		
List 18 Cardholder	16		

Basic Design

2.02 The KS-19426 mounting consists of a 90-degree wedge-shaped housing for post- or wall-mounting of coin telephone sets (Fig. 1 through 5).



Fig. 2—KS-19426 Mounting for Walk-Up Outdoor Service with List 39 Mast

2.03 Post mountings (Fig. 1 through 3) may be installed singly or in multiple combinations as shown in Fig. 6.

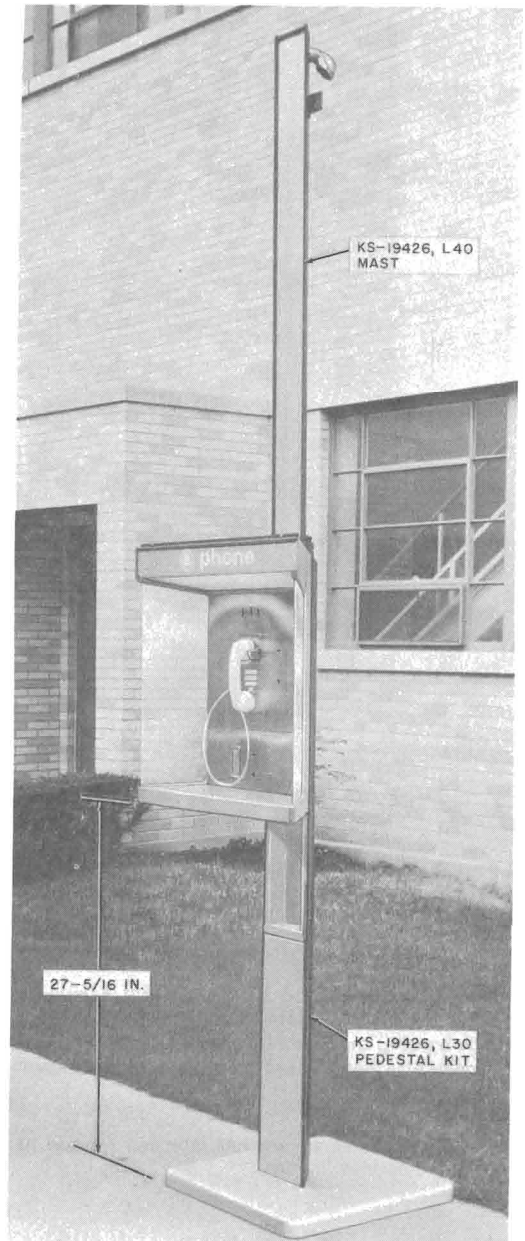


Fig. 3—KS-19426 Mounting for Drive-Up Service with List 40 Mast

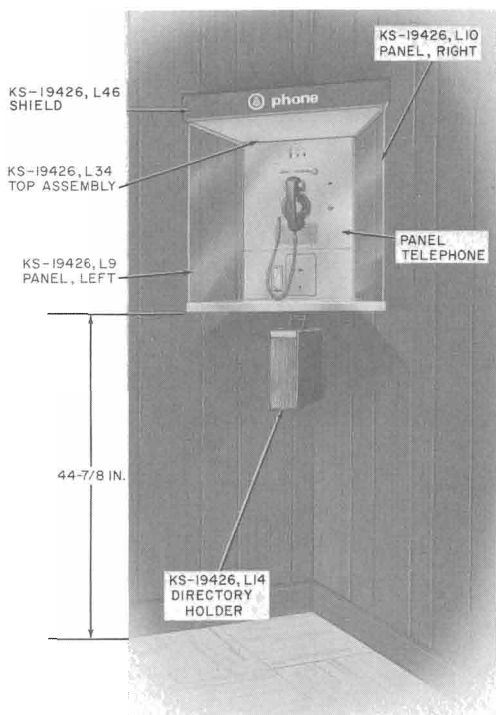


Fig. 4—KS-19426 Mounting in Corner

2.04 Wall mountings (Fig. 4 and 5) may be installed on a flat wall, in a corner, or around a corner in various multiple combinations as shown in Fig. 7.

2.05 A wedge-shaped KS-19426, List 6 canopy (Fig. 1) is available for installation above a single housing to protect the user from the weather. Canopies also may be used in multiple arrangements.

Note: Canopies are not intended for use at drive-up installations.

2.06 The basic KS-19426, List 1 housing (Fig. 8) consist of a top section containing a light fixture and light shield, side cutouts for replaceable panels, a backboard for mounting the coin telephone set, and a stainless steel writing shelf.

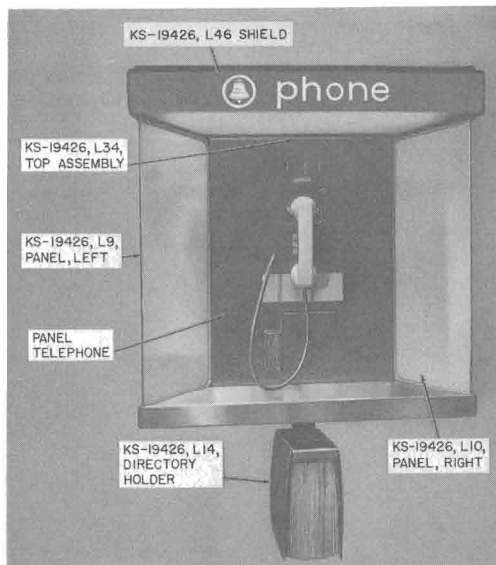


Fig. 5—KS-19426 Mounting on Flat Surface

2.07 The rear of the housing is provided with holes for attaching to post or support.

Lighting

2.08 The light shield (Fig. 10) is a translucent panel which illuminates the coin telephone set, writing shelf, and surrounding area. The light shield is available in various options as follows:

- White background with a Bell System emblem and word "phone" printed in blue letters (KS-19426, List 45)
- Blue background with a Bell System emblem and word "phone" printed in white letters (KS-19426, List 46)
- White background with no letters (KS-19426, List 47)



Unless otherwise specified KS-19426, List 1 housing will be furnished with List 46 light shield.

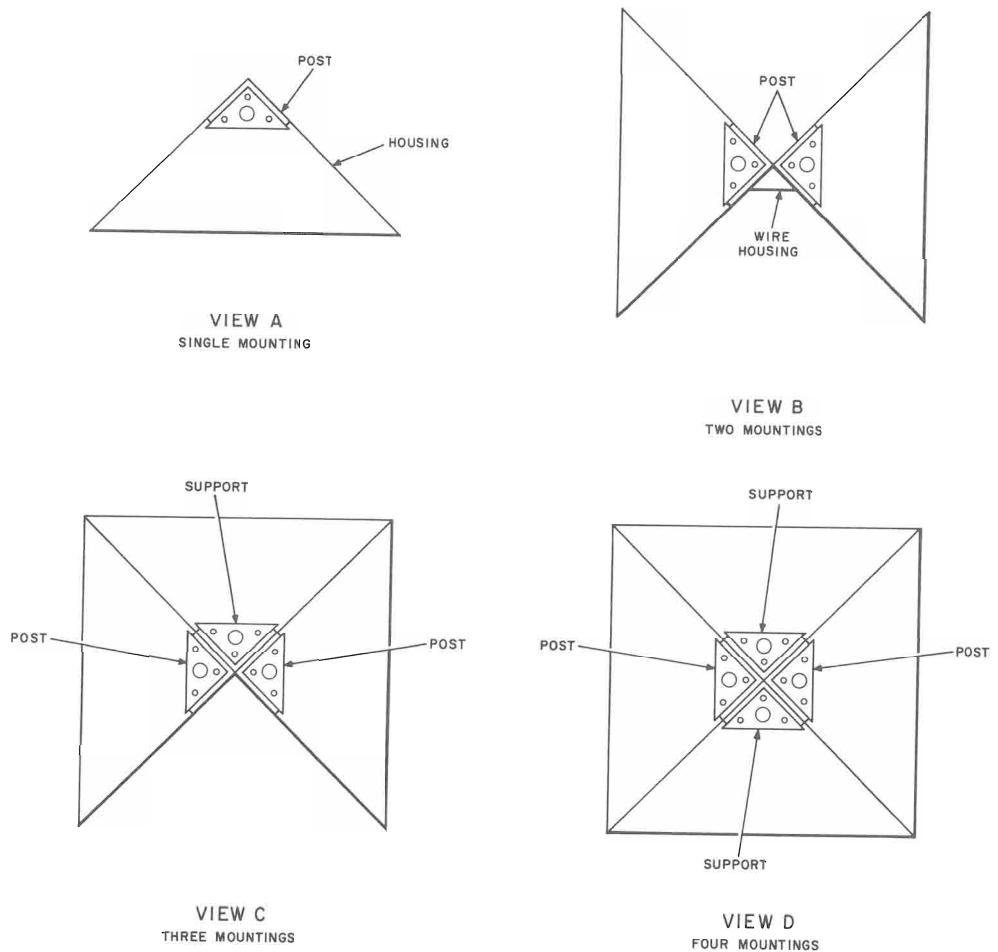


Fig. 6—Various Arrangements for Post Mountings

2.09 The 24-inch lamp (F-20-T12-CW or equivalent) is not furnished with housing and must be ordered separately.

Directory Holders

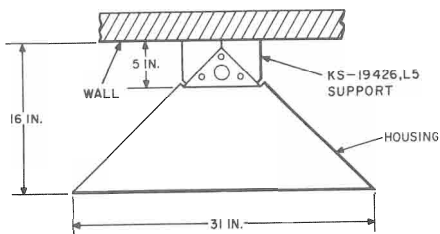
2.10 Two directory holders are available for attachment beneath the basic housing.

- (a) List 13 directory holder (Fig. 1) for outdoor use, walk-up installations.

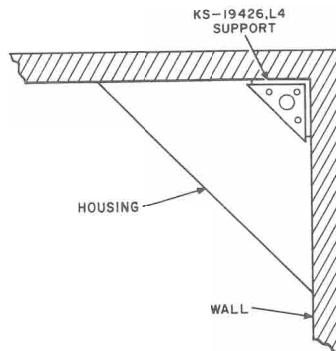
- (b) List 14 directory holder (Fig. 4 and 5) for indoor use.

Directory Covers

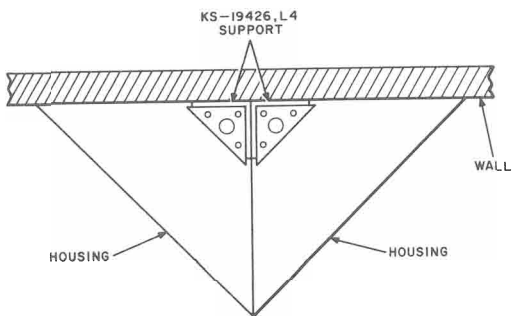
2.11 Replacement covers for the List 13 and List 14 directory holders are available for field replacement. The List 42 closed end cover is used with List 13 holder and List 43 open end cover with List 14 holder.



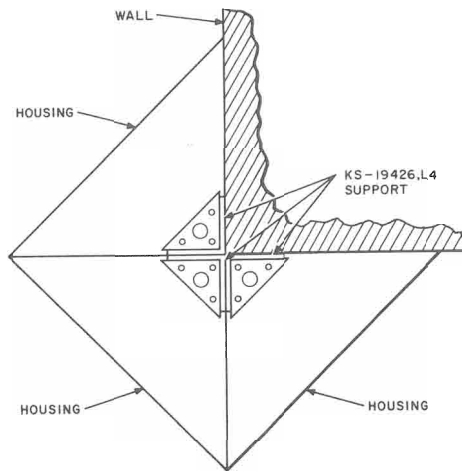
VIEW A
SINGLE MOUNTING
FLAT SURFACE



VIEW B
SINGLE MOUNTING, CORNER



VIEW C
TWO WALL MOUNTINGS
AT RIGHT ANGLES



VIEW D
THREE MOUNTINGS
AROUND CORNER

Fig. 7—Various Arrangements for Wall Mountings

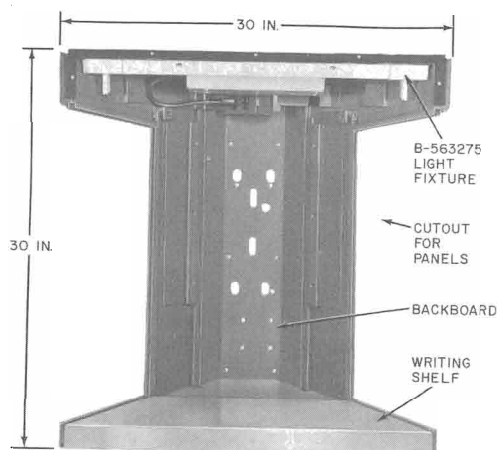


Fig. 8—KS-19426, List 1 Housing Less Light Shield

Panels

2.12 The housing side panels are available in two widths: 8-1/16 inches and 17-9/16 inches. These panels extend outward on each side to provide privacy. Acoustic material and clear tempered glass panels are available.

Posts and Masts

2.13 A black angular steel post, with an aluminum cover on the flat front face, is available for walk-up or drive-up service (Fig. 9).

2.14 Two masts are available for bringing overhead power and telephone wires into an outdoor installation.

- (a) List 39 mast (Fig. 2) for use on outdoor mounting with canopy.
- (b) List 40 mast (Fig. 3) for use on outdoor mounting without canopy.

Signs

2.15 A KS-20031, List 1 sign, illuminated with a special 100-watt mercury lamp, is available for use with the mounting. If a List 39 or List 40 mast is not used, a List 41 mast must be ordered for mounting the sign (Fig. 1). See Section 508-810-202 for additional information on the sign.

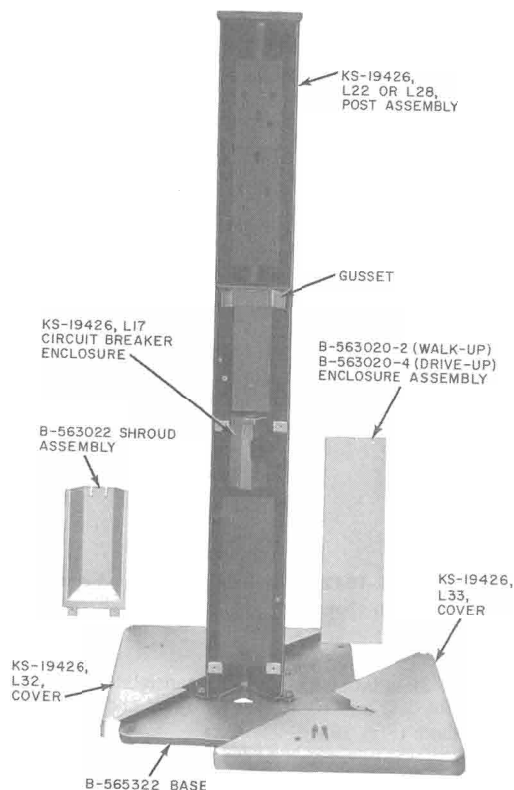


Fig. 9—Typical Pedestal Kit

Caution: Do not expose eyes or skin to ultra violet rays of a burning mercury arc if the outer glass envelope is broken.

Telephone Sets

2.16 The KS-19426 mounting is designed primarily for panel-type coin telephone sets. These sets fill the space between the light shield and shelf.



A List 34 top assembly must be installed with a panel-type coin telephone set.

2.17 The 1-type coin telephone set may be used with the KS-19426 mounting but requires a



Fig. 10—KS-19426 Mounting Using 1-Type Coin Telephone Set

List 7 installation kit. This kit consists of mounting screws, left and right side shrouds, and associated brackets (Fig. 10).

2.18 The 200-type coin collector, plus 685-type subscriber set, also may be used with KS-19426 mounting but requires a List 8 installation kit. This kit consists of mounting screws, 685-type subscriber set adapter, left and right side shrouds, bottom plate, and subscriber set coverplate (Fig. 11).

Note: Handsets equipped with 6-foot H4CY armored cords for drive-up coin telephones must be ordered separately. Use G3AD or G3AF (moisture proof) handset for single slot sets and G3AE or G3AG (moisture proof) handset for multislot sets.

Wiring

2.19 Electric power and telephone line wire entrance may be at the top or bottom of mounting post or through mast opening. For wall mountings, the entrance shall be behind the KS-19426 housing.

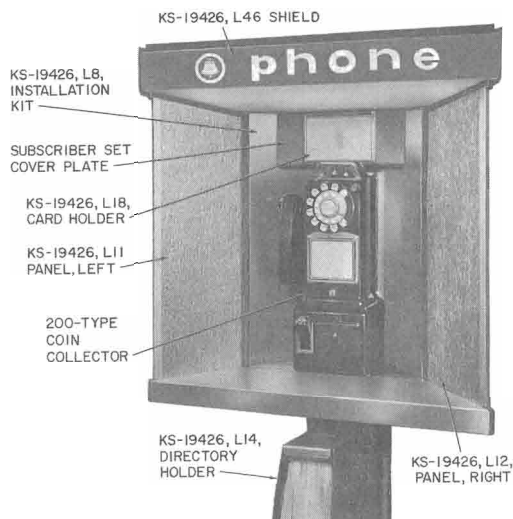


Fig. 11—KS-19426 Mounting Using 200-Type Coin Collector

2.20 Connections to the power outlet box and telephone station protector unit are in the cavity behind the light shield. Removal of the light shield allows access to connections.

2.21 The housing is prewired from the power receptacle to a terminal strip located in a junction box on the housing under the writing shelf (Fig. 17 or 18).

2.22 A KS-19426, List 17 circuit breaker enclosure (Fig. 12), for mounting a Heineman Electric Co. No. 0912, 15 amp Cat #91-106-1 single pole circuit breaker (obtained locally) mounts in the lower section of the post when housings are post-mounted. Access is by removing the post cover assembly.

2.23 A List 16 wire housing (Fig. 13) provides a channel through which interconnecting wires are to be run when mountings are installed back-to-back on posts.

2.24 A KS-19261, List 3 light control may be used to switch the light on at darkness and off at daylight. A bracket for mounting the relay box is welded onto the upper portion of the housing

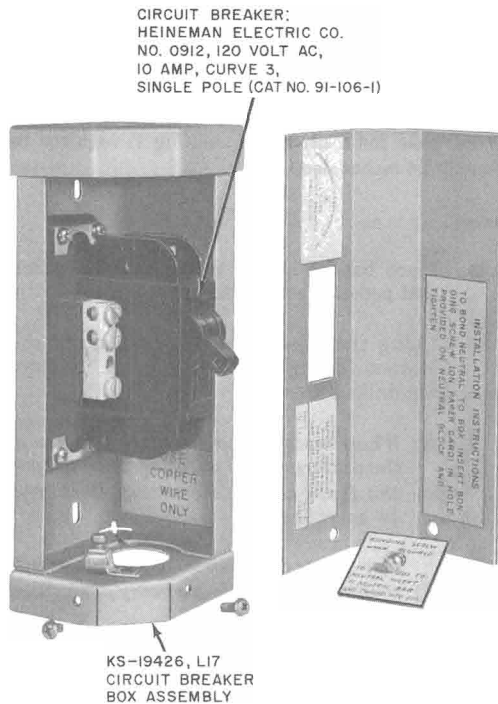


Fig. 12—Circuit Breaker Box with Circuit Breaker Installed

on the right-hand side. The wire channel for the light cell cord is attached to this side and permits the cell, or sensing element, to be located in a metal box below the shelf in a protected location. See Section 508-825-100 for additional information on the light control.

Ordering Examples (See Table A and B)

(a) For pedestal-mounted, single unit, 1-type coin telephone sets, for walk-up outdoor service with a canopy, narrow glass panels, illuminated sign, and a mast for overhead power and telephone line:

- 1—Pedestal Kit, KS-19426, L23
- 1—Housing, KS-19426, L1
- 1—Mast, KS-19426, L39
- 1—Canopy, KS-19426, L6
- 1—Installation Kit, KS-19426, L7

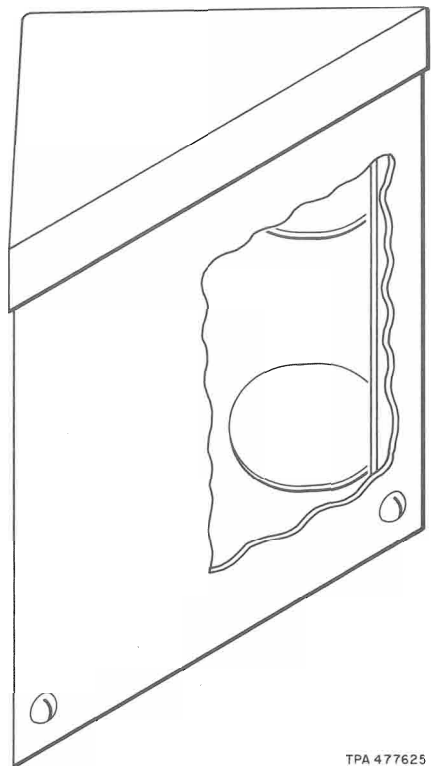
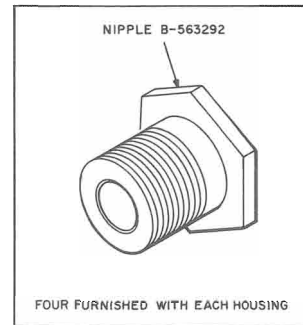


Fig. 13—KS-19426, List 16 Wire Housing

- 1—Panel, Left, KS-19426, L9
- 1—Panel, Right, KS-19426, L10
- 1—Directory Holder, KS-19426, L13
- 1—Sign, KS-20031, L1

(b) For two wall-mounted units at right angles, without canopies, with wide acoustic panels, for use with the 200-type coin collectors:

- 2—Housings, KS-19426, L1
- 2—Supports, KS-19426, L8
- 2—Panels, Left, KS-19426, L26 (see note)
- 1—Panel, Right, KS-19426, L27 (see note)
- 1—Multiplying Strip, Right, KS-19426, L25 (see note)
- 2—Directory Holders, KS-19426, L14 (L13 if outside and other than Drive-Up location)

Note: Two right panels, one left panel, and one KS-19426, List 24 left multiplying strip, may be used.

(c) For pedestal-mounted, back-to-back, for drive-up service with panel telephone sets, narrow glass panels; to be installed with underground power and telephone line:

- 1—Pedestal Kit, KS-19426, L31
- 2—Directory Holders, KS-19426, L13
- 2—Housing, KS-19426, L1
- 2—Panels, Left, KS-19426, L9
- 2—Panels, Right, KS-19426, L10
- 1—Wire Housing, KS-19426, L16
- 2—Top Assemblies, KS-19426, L34
- 1—Circuit Breaker Box, KS-19426, L17

3. INSTALLATION

Pedestal Mounting (Fig. 1, 2, and 3)

3.01 Pedestal kit KS-19426, List 23 may be installed on concrete or wooden surfaces. When the surface is asphalt, a concrete base 24 inches square and 36 inches deep is required. Wooden surfaces must have a minimum thickness of 2 inches.

3.02 The concrete base for walk-up installations shall be flush with ground level and 6 inches above road level for drive-up installations.

3.03 Where a curb does not exist to protect drive-up mountings, a concrete base 48 inches long, 24 inches wide, and 36 inches deep shall be embedded in the ground with the 24-inch dimension

paralleling the road and 6 inches extending above ground level.

3.04 Where a curb already exists the concrete base for a drive-up mounting is required to be only 24 inches deep.

Base

3.05 Place base (Fig. 14) in the exact position that pedestal will be mounted.

3.06 Using the base as a template, mark the location for eight mounting holes. Remove base from drilling area.



When installation requires the use of the underground wire entrance cutout, the front-center mounting hole may be sacrificed.



Eye protection shall be worn while drilling operations are being performed.

3.07 The base is secured to a masonry surface with 1/2-inch by 3-inch machine bolts. Select the proper size machine bolt anchors to accommodate bolts and drill holes to accept anchors.

3.08 The base is secured to a wooden surface with 5/8-inch by 3-inch lag screws. Drill 1/2-inch holes 2 inches deep for these screws.

3.09 Secure base to mounting surface using hardware describe in 3.07 or 3.08.

Note: The baseplate must be level to ensure proper operation of coin collector or telephone set. Use shimming washers as necessary to ensure base is level.

Post

3.10 Loosen the tamperproof screws and remove shroud from the post(s) (Fig. 9).

3.11 Remove enclosure assembly (Fig. 9) from the post(s) by removing two 10-24 by 3/8-inch Phillips FHMS.

3.12 Install the post to the base over the underground wire entrance hole using four 5/8-11 by 1-1/2 inch hex head bolts. Do not tighten bolts. See Fig. 17 or 18 for installation requirements.

TABLE A
SUMMARY OF LIST NUMBERS

KS-19426 LIST NO.	DESCRIPTION		REMARKS	
1 ✓	Housing, Fig. 8		Includes KS-19426, List 46 light shield unless List 45 or 47 is specified	
2	Post		Embedded in concrete for walk-up service	
3			Embedded in concrete for drive-up service	
4	Support, Fig. 14 and 15		For mounting List 1 housing in a corner, at right angle on a wall, or between back-to-back housings on post when housings are installed in multiples of three and four	
5			For mounting List 1 housing on flat surface	
6			Canopy* Fig. 1	
7 ✓	Installation Kit, Fig. 10 and 11		Weather protection for outdoor, walk-up installations	
8			For use with 1A/1C/1E-type coin telephone set For use with 200-type coin telephone set	
9	Glass Panel, Fig. 1		Left side, 8-1/16 inches wide	Consists of B-564436 glazing strip and B-563014 glass panel
10			Right side, 8-1/16 inches wide	
11 ✓	Acoustic Panel, Fig. 10 and 11		Left side, 8-1/16 inches wide	
12 ✓			Right side, 8-1/16 inches wide	
13	Directory Holder, Fig. 1 through 5		For outdoor use, Walk-Up Installation	
14			For indoor use	
16	Wire Housing, Fig. 13		Enclosure for wiring between back-to-back housings	
17	Circuit Breaker Enclosure, Fig. 12		For wire connection in post or for circuit breaker. Use Heineman Electric Co. No. 0912, 15 amp cat #91-106-1.	
18	Cardholder Fig. 11		For use with 200-type coin collector	
20	Glass Panel*		Left side, 17-9/16 inches wide	Consists of B-564436 and B-564437 glazing strips
21			Right side, 17-9/16 inches wide	
22	Post, Fig. 9		For pedestal mounting, walk-up service (used as repair part or for extending single installation to multiple installation). Component of List 23 and List 29.	
23	Pedestal Kit, Fig. 9 (typical)		For walk-up service with single housing (includes List 22 post, base, and List 32 and List 33).	
24	Multiplying Strip	Left Side	Used in place of one side panel when housings are installed adjacent to each other. Includes B-565319 multiplying strip	
25		Right Side		
26	Acoustic Panel*		Left side, 17-9/16 inches wide	
27			Right side, 17-9/16 inches wide	
28	Post, Fig. 9		For pedestal mounting, drive-up service (used as repair part or for extending single installation to multiple installation). Component of List 30 and List 31.	
29	Pedestal Kit, Fig. 9 (typical)		For walk-up service, back-to-back installation (includes 2 List 22 posts, base, and 2 List 33 covers)	
30			For drive-up service with single housing (includes List 28 post, base, and List 32 and List 33 covers)	
31			For drive-up service, back-to-back installation (includes 2 List 28 posts, base, and 2 List 33 covers)	

TABLE A (Cont)
SUMMARY OF LIST NUMBERS

KS-19426 LIST NO.	DESCRIPTION	REMARKS	
32	Cover, Fig. 10	No cutout	Used as repair part. Component of List 23 and List 30.
33		Cutout for post	Used as repair part. Component of List 23, 29, 30, and 31.
34	Top Assembly	Use with all panel telephone sets to support rear edge of sign shield	
39	Mast, Fig. 1, 2, and 3	For overhead power and/or KS-20031, List 1 sign where canopy exists — Walk-Up Installations	
40		For overhead power and/or KS-20031, List 1 sign where canopy does not exist — Drive-Up Installations	
41		For mounting KS-20031, List 1 sign on canopy — Walk-Up Installations	
42	Directory Cover Assembly	Used on List 13	
43		Used on List 14	
45	Light Shield	White background — blue letters	
46	Light Shield	Blue background — white letters Furnished with List 1 housing unless otherwise specified	
47	Light Shield	White background — no letters	

*Do not use canopies nor wide panels on drive-up mountings.

TABLE B
POST AND PEDESTAL APPLICATIONS

ARRANGEMENT	NUMBER OF HOUSINGS	TYPE OF INSTALLATION	REQUIRED COMPONENTS
Single	1	Walk-up	1 Pedestal Kit, KS-19426, L23 or 1 Post, KS-19426, L2 (embedded)
		Drive-up	1 Pedestal Kit, KS-19426, L30 or 1 Post, KS-19426, L3 (embedded)
Back- to- Back	2	Walk-up	1 Pedestal Kit, KS-19426, L29 or 2 Posts, KS-19426, L2 (embedded) plus 1 Wire Housing, KS-19426, L16
		Drive-up	1 Pedestal Kit, KS-19426, L31 or 2 Posts, KS-19426, L3 (embedded) plus 1 Wire Housing, KS-19426, L16
Cluster of Three	3	Walk-up	1 Pedestal Kit, KS-19426, L29 or 2 Posts, KS-19426, L2 (embedded) plus 1 Support, KS-19426, L4
Cluster of Four	4	Walk-up	1 Pedestal Kit, KS-19426, L29 or 2 Posts, KS-19426, L2 (embedded) plus 2 Supports, KS-19426, L4

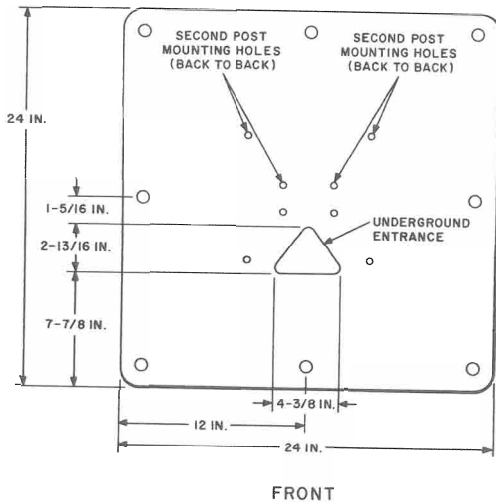


Fig. 14—B-565322 Base

- 3.13** For back-to-back installations, secure the second post to the base in the position provided using bolts as described in 3.12. Do not tighten bolts.



When assembling posts back-to-back with wire housing or supports, do not tighten bolts securely until all parts have been mounted. This allows for final alignment before tightening bolts.

- 3.14** For back-to-back installations (View B, Fig. 6), install KS-19426, List 16 wire housing (Fig. 13) between the two posts using the four nipples supplied with wire housing. Install wire housing with the lip flush with top of posts.
- 3.15** For cluster mounting installations (Views C and D, Fig. 6) install KS-19426, List 4 supports between the posts using (6) 1/4-20 by 1/2-inch hex head bolts for each support.
- 3.16** Ensure that post(s) are plumb and tighten mounting bolts.
- 3.17** If this installation is to have underground wiring, install telephone set wiring at this time using the right-hand hole in the gusset (Fig. 9).

List 1 Housing

- 3.18** Remove two screws and remove light fixture from housing.
- 3.19** Install KS-19426, List 1 housing on post(s) and/or support(s) using six No. 8-32 by 3/8-inch flathead screws and three No. 8-32 by 3/8-inch round head screws. Install round head screws at the top.



Ensure that the neoprene gasket (furnished with housing) is installed between housing and post(s) and/or support(s) across the top.

- 3.20** For multiple installations, tie the housings together using 1/4-20 by 1/2-inch machine bolts. Ensure that front edges of housing are even.

Note: One knockout is located behind the light fixture on each side of the housing where a machine bolt is to be installed.

- 3.21** Install light fixture, removed in 3.18, using two No. 8-32 by 1/4-inch round head screws. Ensure that back edge engages bracket on inside-top of housing.

List 6 Canopy

- 3.22** Install KS-19426, List 6 canopy (Fig. 1), if required, as follows:



If a mast for overhead wiring is used, install B-564433 fitting inside canopy into threaded hole in post. This will separate the telephone and power wires. See 3.23 for installation of mast.

- Remove and discard three machine bolts from the top of posts(s) and/or support(s).
- Place canopy on post or support.
- Place B-563018 plate and neoprene gasket on top of canopy at the apex.
- Secure canopy to post and/or support using one 3/8-16 by 6-3/4 inch hex head bolt (at apex) and two 3/8-16 by 6-1/2 inch hex head bolts which are furnished with canopy.

- (e) Unless a mast is used plug up the two wiring holes in B-563018 plate using the pipe plugs furnished.
- (f) For multiple installations, tie the canopies together, 4 inches from the front corners using No. 12-24 by 3/4 inch machine bolts and 12-24 hex nuts.

List 39 Mast

3.23 If a canopy is used, install KS-19426, List 39 mast, if required, as follows:

- (a) Install B-696200 adapter with neoprene gasket on top of canopy using two 3/8-16 by 7 inch hex socket head cap screws. Leave hole at apex open.
- (b) Insert power wires through opening in adapter and canopy (with B-564433 fitting) and install mast on adapter. Secure mast to adapter using two 3/8-16 by 1-1/2 inch hex head bolts. Further secure mast at apex by inserting 3/8-16 by 8-1/2 inch hex head bolt through mast, adapter, canopy, and into post.

List 40 Mast

3.24 If a canopy is not used, install KS-19426, List 40 mast, if required, as follows:

- (a) Remove and discard three bolts from top of post.
- (b) Install B-696201 adapter with neoprene gasket on top of post using two 3/8-16 by 1-1/4 inch hex socket head cap screws. Leave hole at apex open.
- (c) Insert power wires through opening in adapter and install mast on adapter. Secure mast to adapter using two 3/8-16 by 1-1/2 inch hex head bolts. Further secure mast at apex by inserting 3/8-16 by 2-1/2 inch hex head bolt through mast, adapter, and into post.

First Attachment

3.25 If a mast is used make the first attachment for telephone entrance.



Observe local regulations for minimum wire clearance. Bottom entrance head

on mast is for telephone wire entrance. A drop wire hook or first attachment bracket is fastened by a 1/4-inch bolt under entrance head. The slit rubber grommet may be used and the entrance head omitted if conditions permit.

Internal Wiring

3.26 Install telephone set wiring as outlined in 3.57 through 3.60 and install electric wiring as outlined in 3.61 through 3.67.

Side Panels

3.27 Install panels as follows (Fig. 19).

Note: For ease of installation, screws under shelf may be loosened and shelf moved forward.

- (a) Slide left panel into position.
- (b) Secure bottom of panel to housing using three 8-32 by 5/16-inch round head screws, inserted from under shelf.
- (c) Secure top rear portion of panel to housing using B-564411 slotted retainer and one No. 8-32 by 5/16-inch round head screw.



In the acoustic panels, the slotted retainer must be tapered in order for it to slide down in the panel.

- (d) **FOR NARROW PANEL, INSTALL B-563247 TOP RETAINER WITH LIP TOWARD INSIDE USING ONE NO. 8-32 BY 3/16-INCH FLATHEAD SCREW.**
- (e) **FOR NARROW PANEL, INSTALL B-563234-2 BOTTOM RETAINER, WITH LIP TOWARD OUTSIDE USING ONE NO. 8-32 BY 5/8-INCH ROUND HEAD SCREW.**
- (f) **FOR WIDE PANEL, INSTALL B-563234-1 BOTTOM RETAINER WITH LIP TOWARD OUTSIDE, USING ONE NO. 8-32 BY 5/8-INCH ROUND HEAD SCREW.**
- (g) If an acoustic panel is used, secure top of panel to housing using No. 8 self-tapping screw.
- (h) Slide right panel into position.

- (i) Perform operations outlined in (b) and (c).
- (j) **FOR NARROW PANEL, INSTALL B-563248 TOP RETAINER, WITH LIP TOWARD INSIDE, USING ONE NO. 8-32 BY 3/16 FLATHEAD SCREW.**
- (k) **FOR NARROW PANEL, INSTALL B-563235-2 BOTTOM RETAINER, WITH LIP TOWARD OUTSIDE USING ONE NO. 8-32 BY 5/8-INCH ROUND HEAD SCREW.**
- (l) **FOR WIDE PANEL, INSTALL B-563235-1 BOTTOM RETAINER, WITH LIP TOWARD OUTSIDE USING ONE NO. 8-32 BY 5/8-INCH ROUND HEAD SCREW.**



When two housings are mounted side-by-side in multiple installations, and glass panels are used, a filler multiplying strip (List 24 or List 25) is used in place of one of the panels. Do not use wide panels on drive-up mountings.

List 34 Top Assembly

- 3.28** If a 235- or 1235-type coin collector or a 2A/2C-type coin telephone set is used, install KS-19426, List 34 top assembly on the coin telephone set using two screws furnished with top assembly.
- 3.29** Install the coin collector or coin telephone set with top assembly attached, at this point. Use security studs with KS-19426 mounting, see Sections 506-410-400, 506-411-401, or 506-412-402 for stud selection.

List 7 Installation Kit

- 3.30** If 1-type coin telephone set is used, install KS-19426 List 7 installation kit (Fig. 20) as follows:
 - (a) Ensure that studs and insert in backboard are tight.
 - (b) Install backboard in housing using six 1/4-20 by 5/8-inch round head screws.
 - (c) Install B-564432 bracket on bottom of housing using two No. 8-32 by 1/4-inch round head screws.

- (d) Install B-563229 bracket on the top of backboard using two No. 8-32 by 1/4-inch flathead screws.
- (e) Remove protective paper from edges only of B-563227 left shroud assembly. Install shroud assembly in the housing using 1/4-20 by 1/2-inch round head screw at top.
- (f) Secure left shroud assembly to B-564432 bracket, installed in (c) using one No. 8-32 by 1/4-inch round head screw.
- (g) Remove protective paper from edges only of B-563228 right shroud assembly. Install shroud assembly in the housing using one 1/4-20 by 1/2-inch round head screw at top.
- (h) Secure right shroud assembly to B-564432 bracket, installed in step (c) using one No. 8-32 by 1/4-inch round head screw.

- (i) Install coin telephone set using security studs, 3.29.
- (j) Install B-564435 strip assembly above coin telephone set using two No. 8-32 by 1/4-inch tamper proof screws and KS-19192, List 1 wrench.
- (k) Remove protective paper completely from shrouds after installation is complete.

List 8 Installation Kit

- 3.31** If a 200-type coin collector is used, install KS-19426, List 8 installation kit (Fig. 21) as follows:
 - (a) Ensure that studs and insert in adapter backboard are tight.
 - (b) Place B-563284 back shelf in bottom rear of housing. Secure by inserting two No. 8-32 by 1/4-inch round head machine screws from the underside of the housing. Do not tighten.
 - (c) Install backboard in housing using six 1/4-20 by 5/8-inch round head screws.
 - (d) Install B-563229 bracket on top of backboard using two No. 8-32 by 1/4-inch flathead screws. Do not tighten.

(e) Remove protective paper from edges only of B-563289 left shroud assembly. Insert bottom of shroud into slots of back shelf, installed in (b) and secure shroud to housing using one 1/4-20 by 1/2-inch round head screw at top. Do not tighten.

(f) Remove protective paper from edges only of B-563290 right shroud assembly. Insert bottom of shroud into slots of back shelf installed in (b) and secure shroud to housing using one 1/4-20 by 1/2-inch round head screw at top. Do not tighten.

(g) Align back shelf, shrouds, and bracket. Tighten all screws.

(h) Install 200-type coin collector. Use P-12E793 security studs with KS-19426 mounting.

(i) Install appropriate subscriber set on top of adapter backboard and on B-563229 bracket using four No. 8-32 by 1/4-inch round head screws.

Note: Do not attach plastic subscriber set cover.

(j) Install B-564418 subscriber set cover assembly on B-563229 bracket using two No. 10-24 by 1/2-inch tamper proof screws and KS-19192, List 1 wrench.

(k) Remove protector paper completely from shrouds after installation is complete.

List 18 Cardholder

3.32 If a List 18 cardholder is required for the 200-type coin collector, install as follows (Fig. 11):

(a) Loosen two No. 8-32 by 1/4-inch round head screws located on bottom of subscriber set cover assembly.

(b) Insert appropriate card into cardholder frame.

(c) Slide notched clip of cardholder under the two loose screws.

(d) Insert tab at top of cardholder into notch of subscriber set cover.

(e) Tighten the two screws.

Light Shield

3.33 Insert fluorescent lamp in light fixture and install light shield as follows:

(a) Slide light shield over the panel retaining channels and verify that shield is seated properly against gasket. Ensure that back edge of shield is engaged in KS-19426, List 34 top assembly or B-564418 subset cover assembly (whichever is applicable).

(b) Install shield retainer bar across top of housing using four No. 10-24 by 1/2-inch tamperproof screws and KS-19192, List 1 wrench.

List 32 and 33 Base Covers

3.34 Install KS-19426, List 32 and List 33 base covers or two KS-19426, List 33 base covers as follows (Fig. 9):

Note: KS-19426, List 33 has a cutout for post. If two posts are back-to-back, two List 33 covers are used.

(a) Slide List 32 cover over base from rear as shown, being careful to get bottom angles under base between base standoffs.

(b) Slide List 33 cover over base from front, being careful to get bottom angles under base. Apply KS-19094 antiseize compound to the threads of two 1/4-20 by 1-1/4 inch hex head self-tapping screws. Secure cover to post using these screws.

(c) Apply KS-19094 antiseize compound to the threads of two No. 8-32 by 3/8-inch flathead self-tapping screws. Secure the interlocking portion of the two covers together using these screws.

Post Enclosures

3.35 Install enclosure assembly removed in 3.11 (Fig. 9) on the lower portion of the post by engaging the clips of the enclosure with the corresponding brackets on the post and sliding down flush against the base cover.

- 3.36** Install shroud removed in 3.10 on the upper portion of the post by engaging the bottom of the assembly with the top of the previously installed enclosure assembly and using two tamperproof screws and KS-19192, List 1 wrench.

List 13 or 14 Directory Holder

- 3.37** Install KS-19426, List 13 or List 14 directory holder, if required, as outlined below.

Note: KS-19426, List 13 is used for outdoor walk-up service; KS-19426, List 14 is used for indoor service.

- (a) Install slide mechanism under shelf of housing using six No. 8-32 by 1/2-inch round head screws.
- (b) Fasten the book holder to the slide mechanism by inserting the hinge pin through the hinge arm and securing with No. 10-32 by 3/8 phillips head nylock screw. Refer to Section 508-710-102 for additional information on directory holders.

KS-19426, List 41 Mast and KS-20031 Sign (Fig. 1)



The KS-20031, List 1 sign can be installed on top of KS-19426, List 39 or 40 mast. If neither of these masts is used and a sign is desired, it will be necessary to install a KS-19426, List 41 mast. The List 41 mast cannot be installed on mountings without canopies.

List 41 Mast

- 3.38** Install KS-19426, List 41 mast on canopy as follows:

- (a) Install adapter with neoprene gasket (both furnished with mast) on top of canopy using two 3/8-16 by 7-inch hex socket-head cap screws. Leave hole at apex open.
- (b) Secure List 41 mast to adapter using two 3/8-16 by 1-1/2 inch hex head bolts. Secure mast at apex by inserting 3/8-16 by 8-1/2 inch hex head bolt through mast, adapter, canopy, and into post.

KS-20031 Sign

- 3.39** Install KS-20031, List 1 sign as follows:

Note: The KS-20031, List 1 sign may be mounted with a flat side of the lens facing forward or it may be rotated 180 degrees to provide a corner in the forward position. Change mounting positions by removing four cap nuts from the bottom, rotating the lens 180 degrees, and securing it again with the cap nuts. For complete information on the sign refer to Section 508-810-202.

- (a) Mount the sign on the mast and secure sign with four 1/4-20 by 1/2-inch FH screws.
- (b) KS-20031, List 1 sign lamps shall be wired to junction box below housing with No. 14 AWG wire. Connections should conform to connections of the housing fluorescent lamp.

Caution: *Do not expose eyes or skin to ultra violet rays of a burning mercury arc if the outer glass envelope is broken.*

Post Mountings Embedded in Concrete

Note: Refer to 3.01, 3.02, 3.03, or 3.04 for concrete thickness requirements when installing post mountings.

- 3.40** Embed KS-19426, List 2 post(s), for walk-up mountings, or KS-19426, List 3 post(s), for drive-up mountings, in the center of the base to concur with the dimensions shown in Fig. 17 or 18.

- 3.41** Determine that the post(s) is perfectly plumb to ensure proper operation of the coin telephone set.

- 3.42** Perform the operations outlined in 3.14, 3.15, 3.17 through 3.33, and 3.35 through 3.39.

Wall Mountings, Using KS-19426, List 4 Support

Note: KS-19426, List 4 support may be installed in a corner (View B, Fig. 7), at right angles (View C, Fig. 7), or around a corner (View D, Fig. 7).

- 3.43** Place support on the wall 45-1/8 inches from ground or floor. See Fig. 22 for installation requirements.

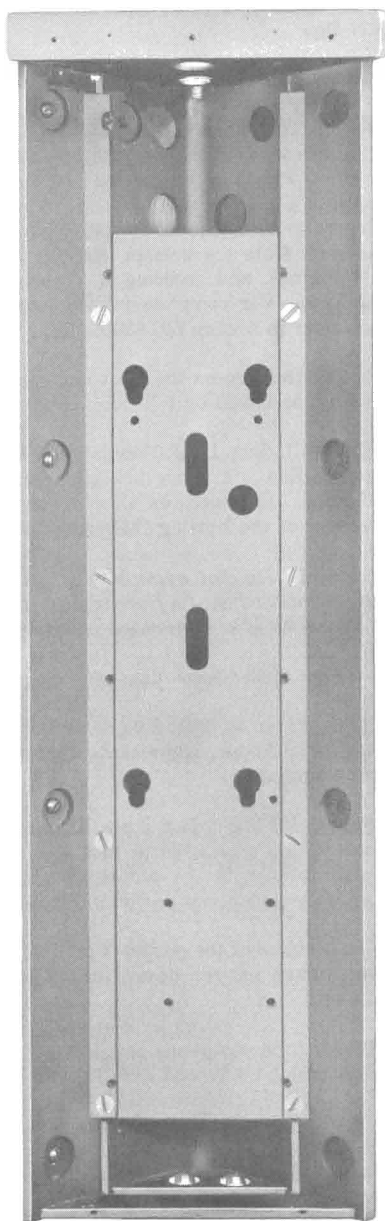


Fig. 15—KS-19426, List 4 Support

3.44 Remove sliding backboard to expose mounting holes.

3.45 Using the support as a template, mark for the drilling of eight holes in wall.

3.46 Drill anchor holes in masonry or lead holes in wood and use fasteners as indicated in Table C to fasten support to surface.

THINK *Eye protection shall be worn while drilling operations are being performed.*

3.47 Install sliding backboard in support.

3.48 When installing two mountings adjacent to each other (View C, Fig. 7), secure two supports together using six 1/4-20 by 1/2-inch hex head bolts.

3.49 To install a mounting around a corner (View D, Fig. 7), secure the center support to the adjacent supports using twelve 1/4-20 by 1/2-inch hex head bolts.

3.50 Perform operations outlined in 3.18 through 3.22, 3.26 through 3.33, and 3.37.

Wall Mountings, Using KS-19426, List 5 Support

Note: KS-19426, List 5 support is used to install a wall mounting on a flat surface (View A, Fig. 7).

3.51 Place support on the wall 45-1/8 inches from ground or floor. See Fig. 22 for installation requirements.

3.52 Remove sliding backboard to expose mounting holes.

3.53 Using the support as a template, mark for the drilling of eight holes in wall.

3.54 Drill anchor holes in masonry or lead holes in wood and use fasteners indicated in Table C to fasten support to surface.

THINK *Eye protection shall be worn while drilling operations are being performed.*

3.55 Install sliding backboard in support.

TABLE C
FASTENERS FOR WALL MOUNTINGS

FASTENER	DRILL SIZE	MOUNTING SURFACES			
		SOFT WOOD	HARD WOOD	MASONRY (CONCRETE, BRICK)	CINDER BLOCK, HOLLOW TILE
1-1/4 inch No. 14 tapping screw	3/32		•		
5/16 by 2-inch hex or RH machine screw and 5/16-inch expansion shield	5/8			•	
1/4 by 4-inch RH toggle bolt	3/4	•			•

- 3.56** Perform operations outlined in 3.18, 3.19, 3.21, 3.22, 3.26 through 3.33, and 3.37.

Telephone Wiring

- 3.57** The wiring for a post mounting may enter from the ground or from a mast (Fig. 17, or 18).

- 3.58** The wiring for a wall mounting may enter from the bottom of the housing, top of housing, or from the back of the housing through the wall (Fig. 22).

- 3.59** If station protection is required, install 123A1A protector on the bracket provided in the rear of the housing (Fig. 19) and terminate station wiring on protector.

- 3.60** If 123A1A protector is not used, install a fused-type protector at a convenient location and connect to telephone ground rod. Install a 42-type connecting block on the housing bracket and terminate station wiring on this block.



When station wiring is installed for single mountings, consideration should be given for future requirements (back-to-back or clustered mountings). The 44A-type connecting block may be substituted to terminate a 6-pair cable.

- 3.61** Ground for the station protector is usually provided by the power system ground. See

Section 508-100-100 for complete grounding information.

Electric Wiring

- 3.62** Install 110-volt wiring to conform with current requirement of the National Electrical Code, Governmental Agencies, and company standards.

- 3.63** Observe the following safety rules.



Under no circumstances shall any makeshift or temporary electrical connections be made on lighting equipment. Before making any repairs or replacements in electrical equipment, operate the electric switch and make sure that the circuit is dead. Verification can be made by using an electric wire tester or other approved testing devices. Wear eye protection when handling fluorescent lamps.

- 3.64** Use the 3-wire arrangement between the power service equipment and the housing. It is recommended that this 3-wire arrangement to the service equipment or to a circuit breaker enclosure be used at all installations.

- 3.65** Use Fig. 23 as a guide for internal wiring.

- 3.66** When a service entrance box is used in post mounted installations, interconnect the service entrance box and the circuit breaker enclosure, Heineman Electric Co. No. 0912, 15 amp Cat

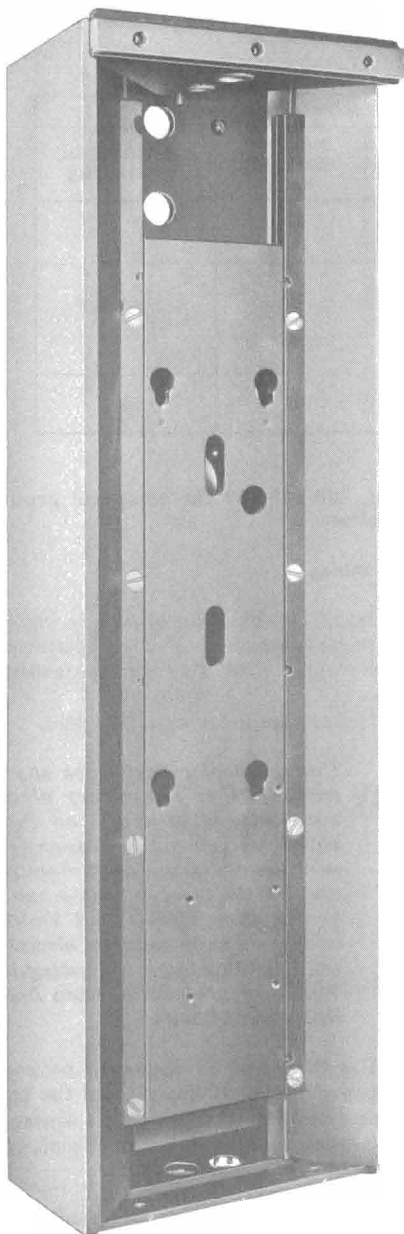


Fig. 16—KS-19426, List 5 Support

#91-106-1 circuit breaker (obtained locally) terminal block under the housing with B-564428 cable assembly.

Note: Install cable with long end fitting at top.

3.67 Interconnect power receptacles in back-to-back or cluster mountings using No. 14, 3-wire armored cable and fittings. Feed cable *through* top side hole of post and housings or supports (2.23).

3.68 A KS-19261, List 3 light control is available to switch the light on at darkness and off at daylight; install in accordance with Section 508-825-100.

4. MAINTENANCE

4.01 The local telephone company shall establish appearance standards of all exposed surfaces.

4.02 The local telephone company shall establish safety standards for all mountings.

4.03 Inspect the approach to the mounting and ensure it is free of all safety hazards.

4.04 Clean these mountings in accordance with Section 508-100-101.

THINK *Wear eye protection when removing light shield or replacing lamps. Turn power off before working on lighting equipment or electrical wiring.*

4.05 Replace light shields and lamps which do not meet company standards. Replace broken or damaged KS-20031, List 2 lens assembly as follows:

- (1) Remove four cap nuts from bottom of assembly and remove old lens.
- (2) Install new lens using reverse procedure.

Caution: *Do not expose eyes or skin to ultra violet rays of a burning mercury arc if the outer glass envelope is broken.*

4.06 To replace broken or damaged side panels (3.27).

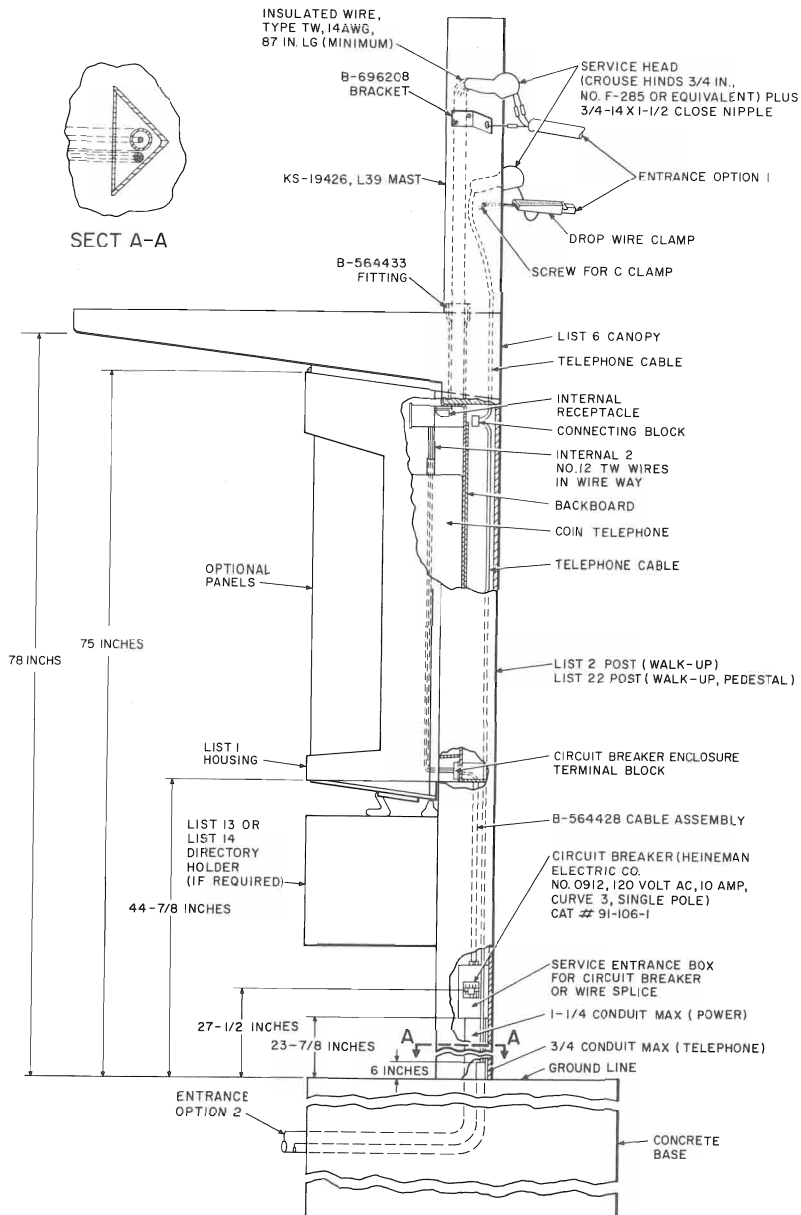


Fig. 17—Installation Requirements for Post or Pedestal Mounting, Walk-Up Location

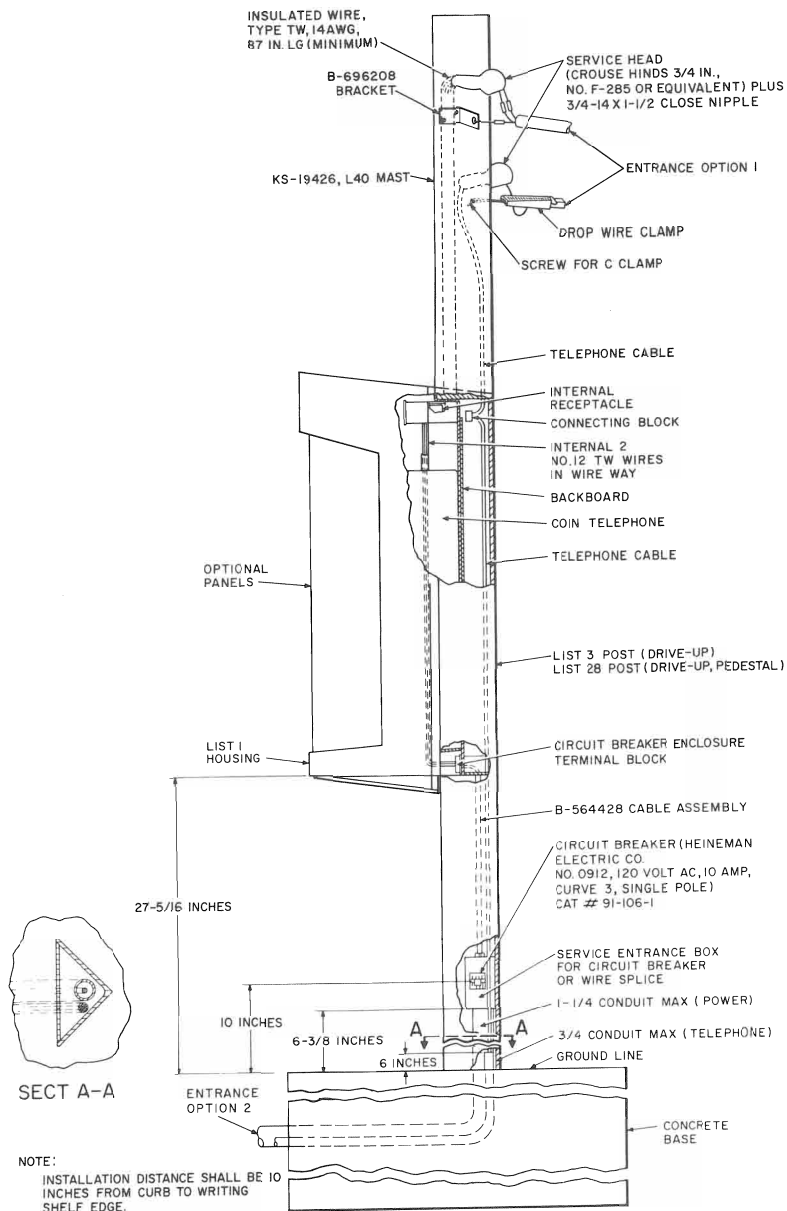


Fig. 18—Installation Requirements for Post or Pedestal Mounting, Drive-Up Location

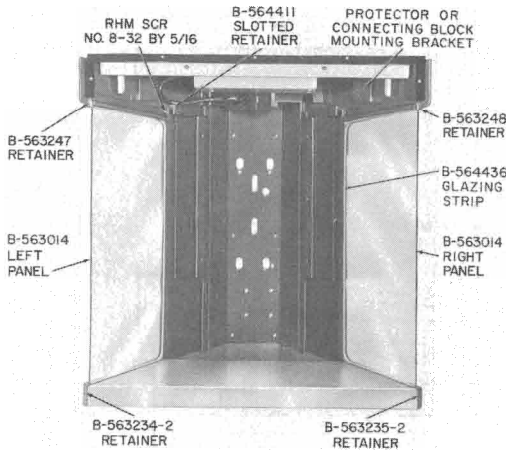


Fig. 19—KS-19426, List 1 Housing Showing Installation of Panels

Caution: After replacing side panels, ensure that all retainers on panels are in place.

- 4.07** In pedestal or post mountings, replace post covers or pedestal covers which are damaged (3.34 through 3.36).

Note: Repair kits for installing new type covers on damaged old type post assemblies are available as follows:

- SI-378—Used on KS-19426 List 2 walk-up embedded post
- SI-379—Used on KS-19426 List 3 drive-up embedded post
- SI-380—Used on KS-19426 List 22 walk-up surface mounted post
- SI-381—Used on KS-19426 List 28 drive-up surface mounted post

- 4.08** Ensure that mounting bolts for canopy and mast (if provided) are tight.
- 4.09** In pedestal mountings, ensure that the mounting bolts in the base are tight.
- 4.10** Replace telephone directories, holders, and covers which show signs of excessive wear or damage by removing screw and hinge pin which secures cover to hanger assembly.

Replacement Parts

- 4.11** For replacement parts other than those previously illustrated or listed in Table A, refer to Table D.

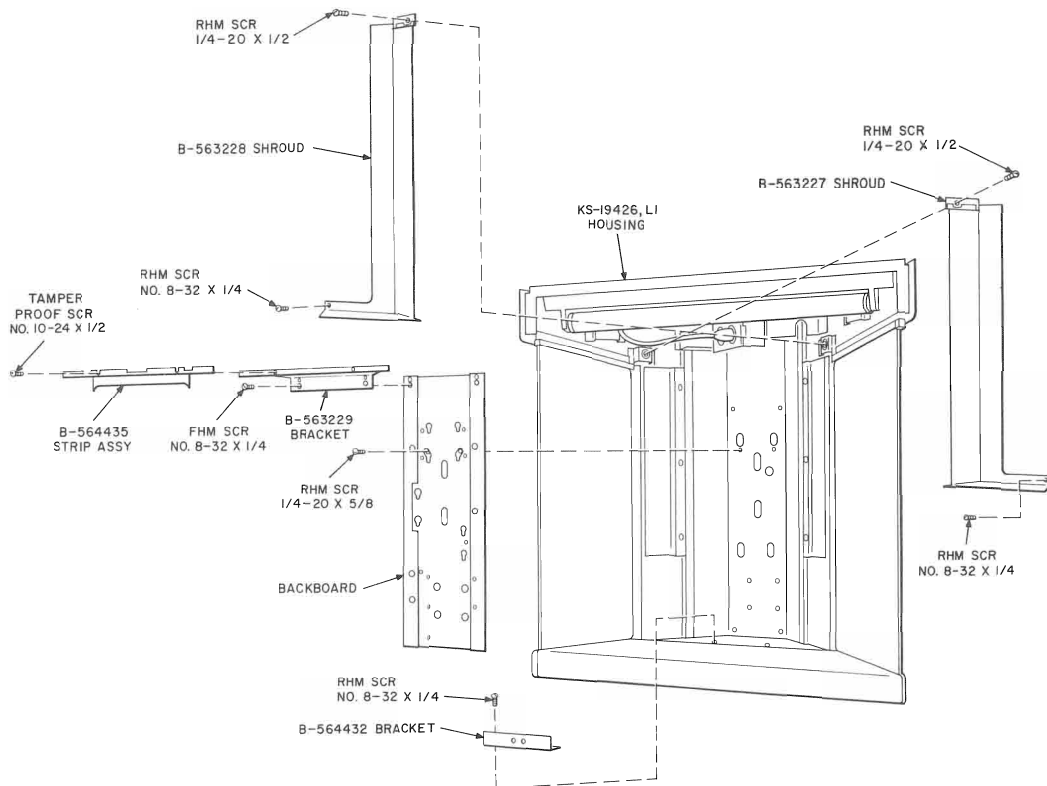


Fig. 20—KS-19426, List 7 Installation Kit

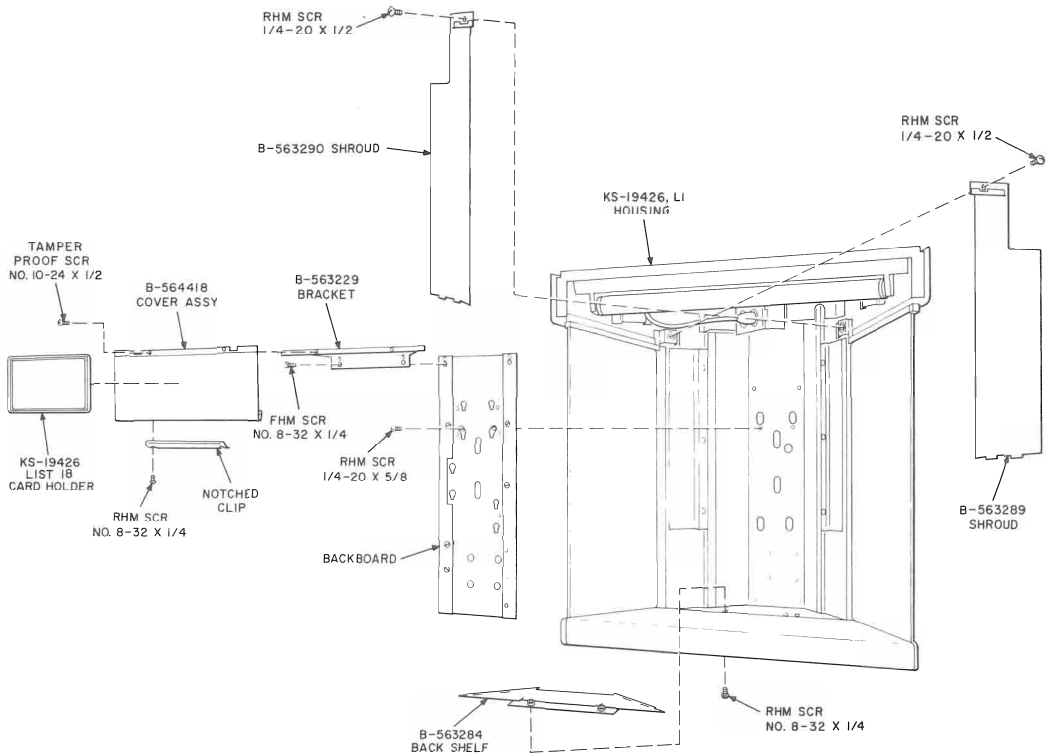


Fig. 21—KS-19426, List 8 Installation Kit

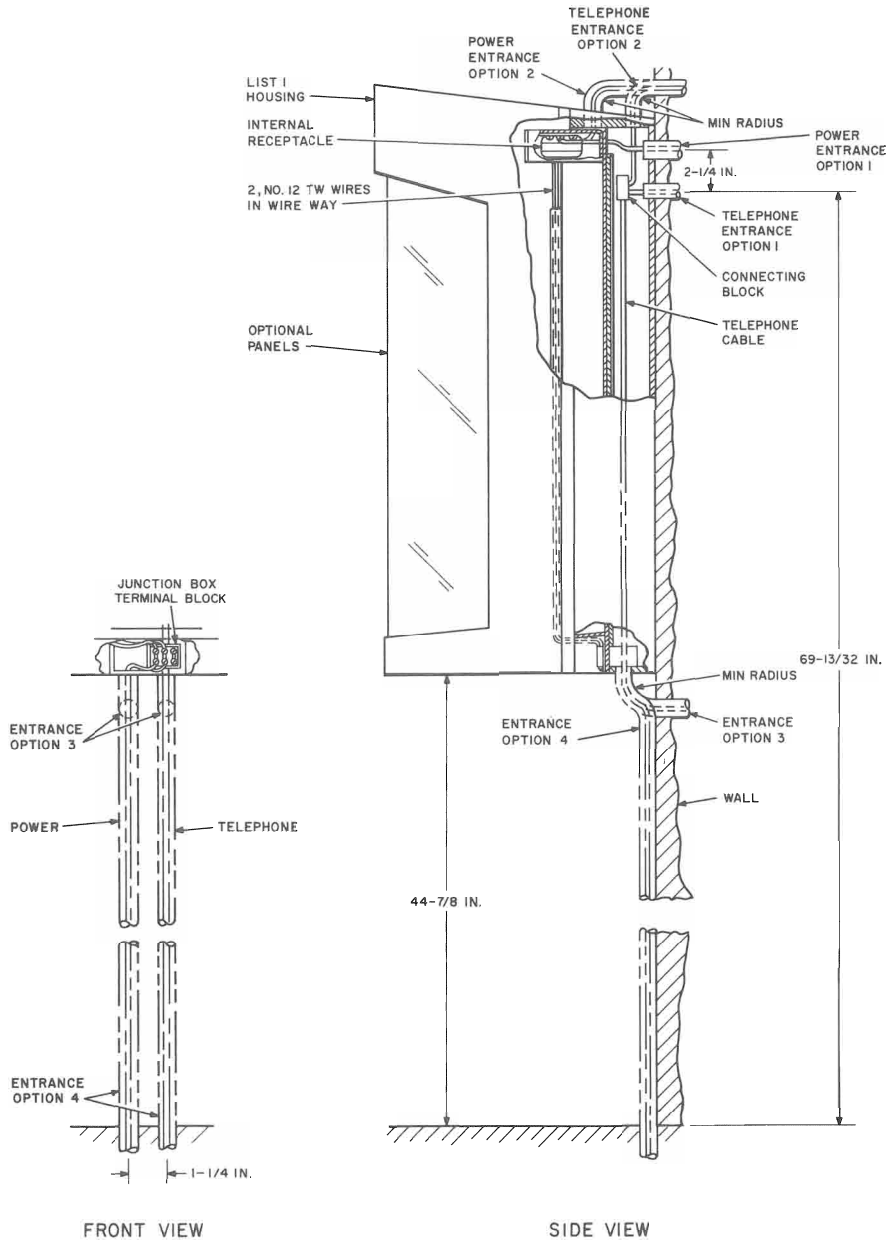
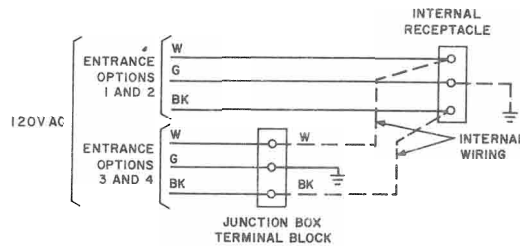
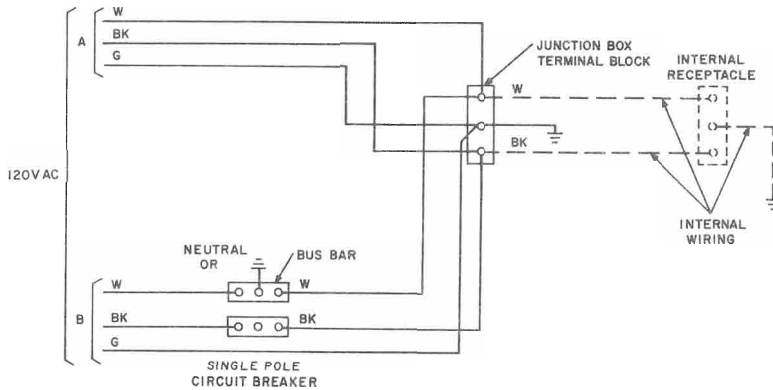


Fig. 22—Installation Requirements for Wall Mountings

WALL MOUNTING



WALK-UP, DRIVE-UP MOUNTING



- STANDARD WIRING
 A—NO CIRCUIT BREAKER
 OPTIONAL WIRING
 B—SINGLE POLE CIRCUIT BREAKER. (HEINEMAN ELECTRIC CO NO. 0912,
 120 VOLT AC, 10 AMP, CURVE 3)

Fig. 23—Wiring Diagram

TABLE D
REPLACEMENT PARTS

NAME	PART NO. OR DESCRIPTION	REMARKS	
Ballast	G. E. Co. No. 6G3744 or equivalent	Component of B-563275 light fixture	
Cable Assembly	B-564428	Power cable in post — Connects between circuit breaker box and L1 housing	
Cord Assembly	B-563276	Component of B-563275 light fixture	
Shroud Assembly		Shown on Fig. 9	Front of all list number posts
Enclosure Assembly	B-563020-1		Front of List 2 Post
	B-563020-2		Front of List 22 Post
	B-563020-3		Front of List 3 Post
	B-563020-4		Front of List 28 Post
Glass Panel	B-563013	Component of List 20 and List 21	
	B-563014	Component of List 9 and List 10	
Glazing Strip	B-564436	Rear strip on Lists 9, 10, 20, and 21	
	B-564437	Front strip on List 20 and 21	
Grommet	B-696207	Used at wire entrance hole on L39 and L40 masts	
Retainer	B-563234-1	Bottom retainer of wide panel when panel is used on left side of housing	
	B-563234-2	Bottom retainer of narrow panel or multiplying strip when panel or strip is used on left side of housing	
	B-563235-1	Bottom retainer of wide panel when panel is used on right side of housing	
	B-563235-2	Bottom retainer of narrow panel or multiplying strip when panel or strip is used on right side of housing	
	B-563247	Top retainer of narrow panel or multiplying strip when panel or strip is used on left side of housing	
	B-563248	Top retainer of narrow panel on multiplying strip when panel or strip is used on right side of housing	
	B-564411	Top rear retainer on all glass panels and multiplying strips	
Pipe Plug	Graybar Co. No. 15 or equivalent	Threaded plug used to plug telephone wire entrance hole in top of post or support	
	Graybar Co. No. 25 or equivalent	Threaded plug used to plug power wire entrance hole in top of post or support	
Post	List 22	Component of List 23 and List 29	
	List 28	Component of List 30 and List 31	
Cover	List 32	Component of List 23 and List 30	
	List 33	Component of List 23, 29, 30, and 31	
Directory Cover	List 42	Component of List 13	
	List 43	Component of List 14	