

MESSAGE WAITING CONSOLES USED WITH 1A, 1A1, OR 1A2 KEY TELEPHONE SYSTEMS

1. GENERAL

1.001 This addendum supplements Section 518-010-111, Issue 2. Place this pink sheet ahead of Page 1 of the section.

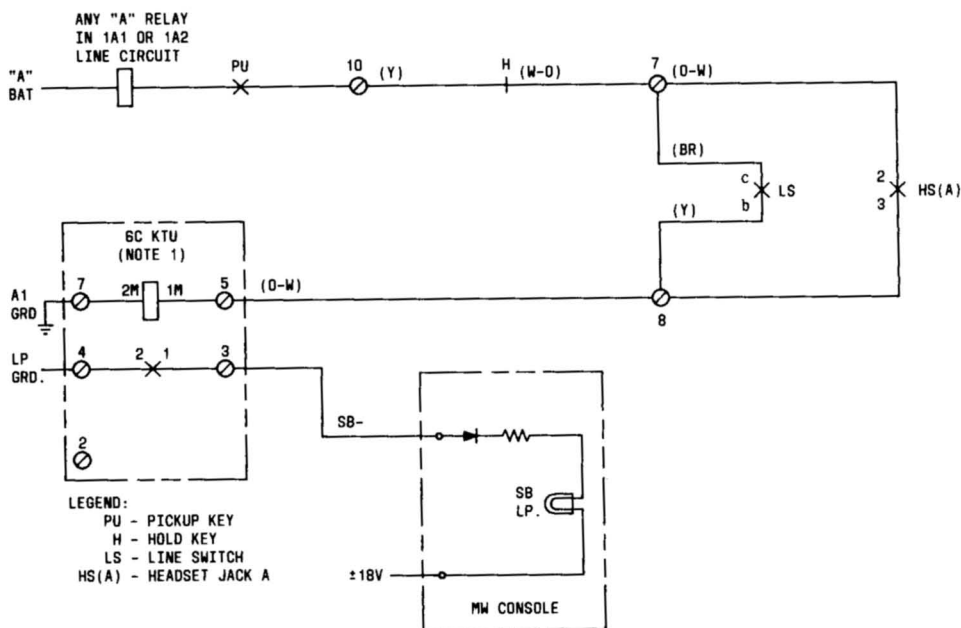
1.002 This addendum is issued to add information on providing station-busy lamp feature to headset equipped CALL DIRECTOR® telephone sets.

2. CHANGES TO SECTION

2.001 Add headset equipped CALL DIRECTOR telephone set to Table A.

2.002 Delete Table B, Page 9.

2.003 Add Fig. 1.1.



NOTE:

1. WHEN USING 6C KTU, THE STATION CABLE LOOP MUST BE LIMITED TO 25Ω OR 500 FEET OF 24 GA. WIRE.

Fig. 1.1—Busy Lamp Control Circuit for Headset Equipped CALL DIRECTOR Telephone Sets

NOTICE

Not for use or disclosure outside the
Bell System except under written agreement

TABLE A

**TELEPHONE SET TERMINATIONS FOR PROVIDING MESSAGE
WAITING AND/OR STATION BUSY IN 1A, 1A1, OR 1A2 KTS
(NOTE 1)**

TELEPHONE SET	MOUNTING CORD LEADS							
	BL LEAD		L LEAD			LG LEAD		
	COLOR	SET TERMINAL	COLOR	MOVE		COLOR	MOVE	
				FROM	TO		FROM	TO
564HK/HL	Y-BR	1	O-Y	5	LH	Y-O	6	LG
565HD		L2	G-Y		HL	Y-G		HG
565GK (Note 2)		L2	S-W		1	G-R		2
2565GK (Note 2)		1	S-W		5	G-R		2
565HK		L2	O-Y	3	LH	Y-O	4	LG
2565HK		1	O-Y	3	LH	Y-O	4	LG
565LK		L2	G-BK	1	LH	BK-G	2	LG
2565LK		1	G-BK	2	LH	BK-G	2	LG
630/631A, B, C, D		6 or 12	Note 3			Note 3		
2630, 2631D		6						
630/631DA		L2	Note 4			Note 4		
2630/2631DA								
634/635D 2634/2635D	Connect to Terminal 39 of 235- or 236-Type KTU (Note 7)		R-G		LG	G-R		5
634/635DA 2634DA/DAM 2635DA/DAM			Note 8			Y-G		22
636, 637A, B, C, D 2636C, 2637D	Fig. 1.1		Note 3			Note 3		
636, 2636CA 637, 2637DA			Note 9			Note 9		
830/2830C 831/2831C	Y-O	22	O-Y	12	20	Note 5		
851/2851B	Y-BR	L2	G-Y		21 (Note 6)	Y-G		12 (Note 6)

Note 1: Telephone set must be wired for station busy feature. Refer to service section in 502 Division for telephone set involved.

Note 2: These sets do not have a hold key. Either connect any unused line key lamp or use spare leads shown and connect to external lamp indicator using spare terminals or D-161488 connectors.

Note 3: Connect hold lamp leads (S-V, V-S) to spare mounting cord leads (G-Y, Y-G) in 1st module using spare terminals or D-161488 connectors.

Note 4: Connect hold lamp leads (G-Y, Y-G) to spare mounting cord leads (G-Y, Y-G) in 1st module.

Note 5: Move Y-G hold lamp lead from 21 to 4.

Note 6: Disconnect, insulate, and store BL leads.

Note 7: The 235- and 236-type KTU station line concentrators must be optioned for the station busy feature per Table B, Section 518-310-405.

Note 8: Connect G-Y from lamp 6 to R-G of mounting cord using a spare terminal or D-161488 connector.

Note 9: Connect hold lamp leads (G-Y, Y-G) to spare mounting cord leads (G-Y, Y-G) in 1st module using spare terminals or D-161488 connectors.