

## TRANSMITTERS 635A

### 1. GENERAL

1.01 This section gives general information relative to the 635A transmitter which may be used on coin collectors, wall sets and desk stands when specified on the service order or other local instructions. It is reissued to delete transmitter battery supply requirements which are now included in the section covering transmission zoning.

### 2. DESCRIPTION

2.01 The 635A transmitter unit consists of the mouthpiece, clamping plate assembly and F1 transmitter unit shown in Fig. 1.

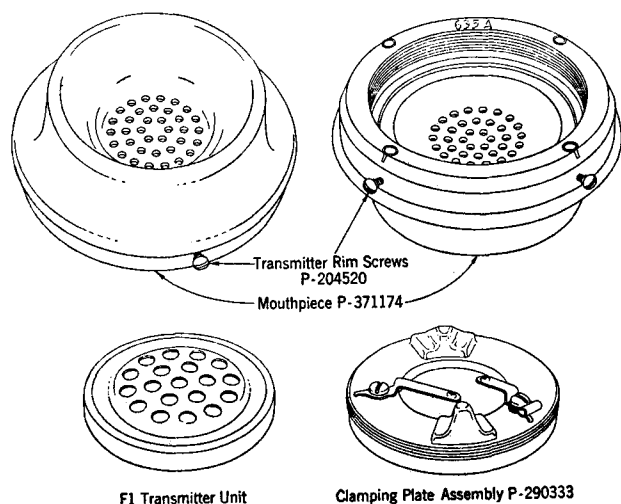


Fig. 1—Parts of 635A Transmitter Unit

### 3. INSTALLATION

3.01 The 635A transmitter unit comes fully assembled and may be installed in existing transmitter bells in place of 323, 337 and similar type transmitter units. If the transmitter bell is not arranged to take P-204520 transmitter rim screws furnished with the 635A transmitter unit it will be necessary to use P-99649 transmitter rim screws instead.

### 4. MAINTENANCE

4.01 If the F1 transmitter unit becomes defective it may be replaced by screwing the clamping plate assembly out of the mouthpiece. The two lugs on the assembly form a grip for the fingers. If the clamping plate assembly cannot be removed with the fingers lay a screwdriver flat across the clamping plate assembly so as to engage the lugs and assist in turning it out of the mouthpiece. Facing the clamping plate assembly, turn it counter-clockwise to remove it from the mouthpiece.

4.02 The contact springs are silver plated and shall not be burnished.

### 5. CONNECTIONS

5.01 The connections for the 635A transmitter unit are the same as for other similar transmitter units and the same precautions should be followed to avoid grounding cord tips on the transmitter bell.