

HAND TELEPHONE SETS—212L TYPE HANG-UP TYPE — COMMON BATTERY — CONNECTIONS WITH NETWORK-TYPE SUBSCRIBER SETS

1.00 INTRODUCTION

1.01 This section covers the combination of apparatus, circuit diagrams, and connections for the 212L hang-up type hand telephone set when used with network-type subscriber sets for either manual or dial common battery service.

1.02 This section is reissued to correct information on the handset mounting.

2.00 GENERAL

2.01 The 212L set may be used for all classes of service including stations of 2-party service when a message rate or tip party identification feature is required.

2.02 The 212L has the standard dial number plate with black letters and red numerals.



Fig. 1 — 212 Type

TABLE A
COMBINATION OF APPARATUS

Hand Tel Set Code	Components				
	Handset	Handset Mounting	Dial or Apparatus Blank	Dial Mounting	Handset Cord
212L-3 (Modified)	G1A-3	G7-3	Number Card Holder	—	H-4
212L-3 (Modified)	F4A-3				H-3
212L-3 (Modified)	F1A-3 F1G-3				H-3
212L-3 (As furnished)	G1A-3		6A	43A-3	H-4
212L-3 (Modified)	F4A-3				H-3
212L-3 (Modified)	F1A-3 F1G-3				H-3

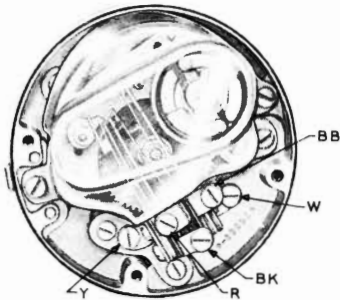


Fig. 2 — 6A-Type Dial

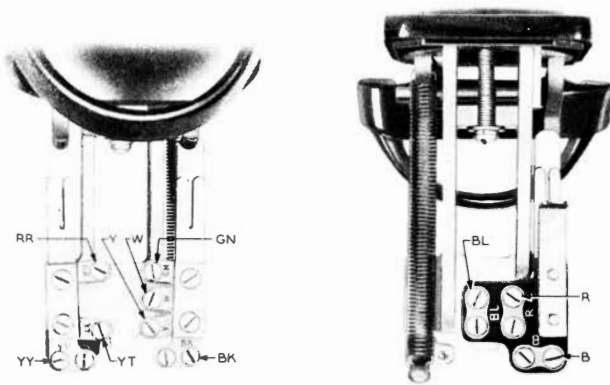
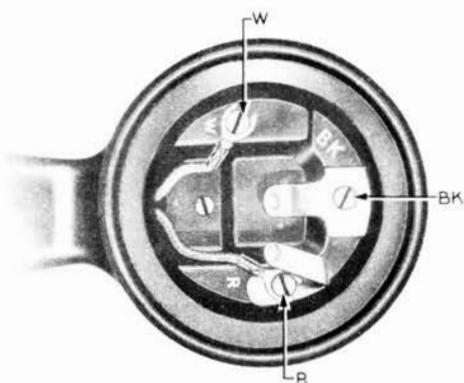
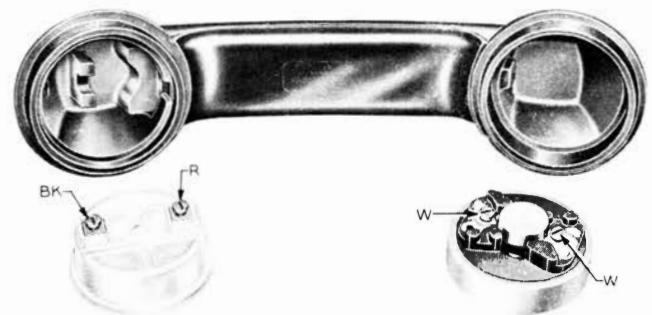


Fig. 3 — G7-Type Handset Mounting



F1 and F4 Type



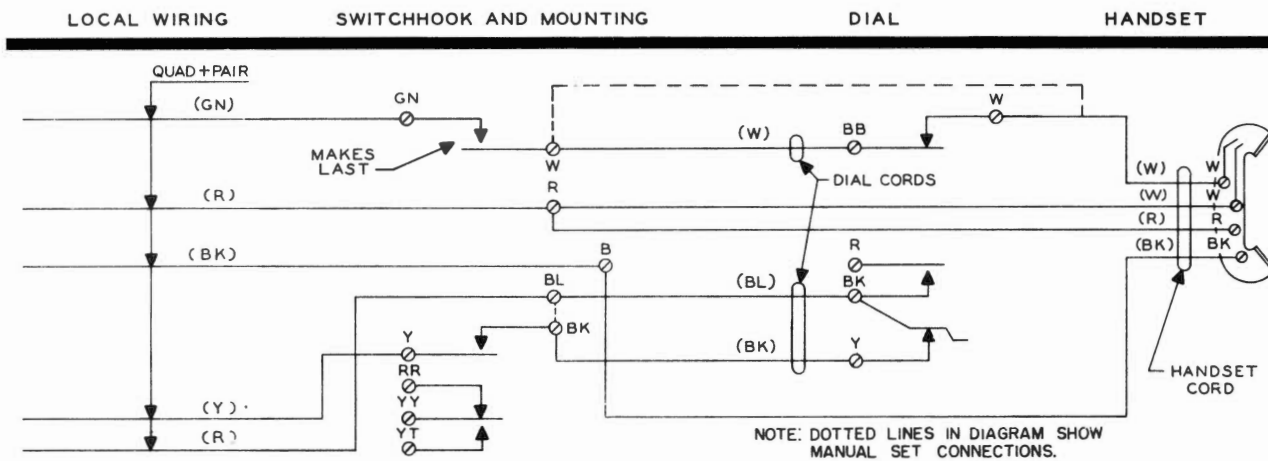
G1 Type

ASSOCIATED APPARATUS

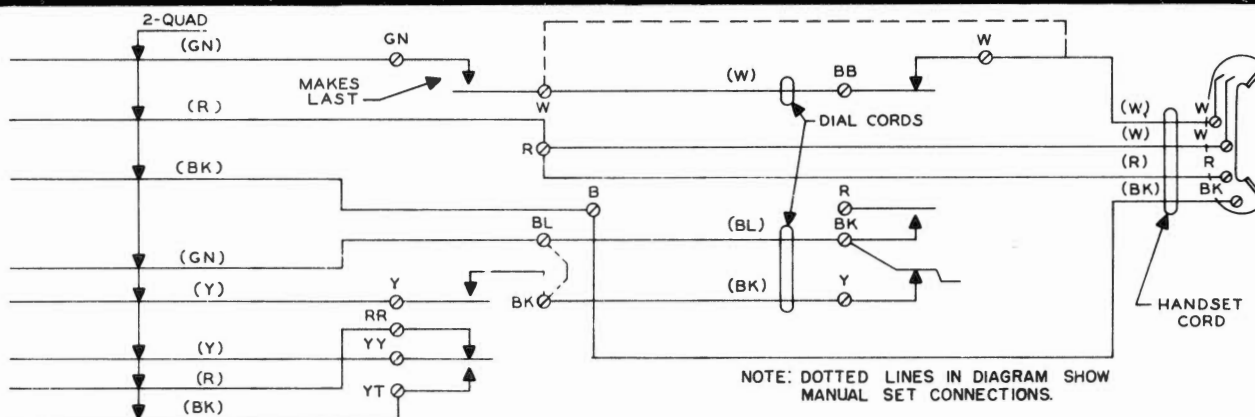
	Class of Service	Sub. Set
TABLE B	Individual Lines 2-Party Flate Rate* 2-Party Message Rate (Manual and Dial Ring Party Only)* 4-Party Semiselective Multiparty Divided Code Regular PBX Stations 750A and 755A Keyless Stations	685A
	4-Party Full Selective 8-Party Semiselective	686A
	*No message rate or tip party identification can be provided for party-on-tip stations.	
TABLE C	2-Party Flate Rate 2-Party Message Rate Where message rate or tip party identification is required for party-on-tip stations both 1000- and 2640-ohm tip-to-ground resistance can be provided, ie, MR —All offices AMA—Mod. X-bar ZR —All offices AMA—SxS AMA—Std. X-bar AT —SxS	685A
	May also be used for these classes of service: Individual Lines 4-Party Semiselective Multiparty Divided Code Regular PBX Stations 750A and 755A Keyless Stations	

Fig. 4 — Handsets

3.00 CIRCUIT DIAGRAMS



212L (WIRED AS FURNISHED)



212L (WIRED AS FURNISHED)

3.01 The 212-Type set is arranged for, but not equipped with, a 61M filter for radio frequency suppression. When this filter is required, remove the dial cord between Y of the dial and BK of the switchhook and connect filter as shown in Fig. 5.

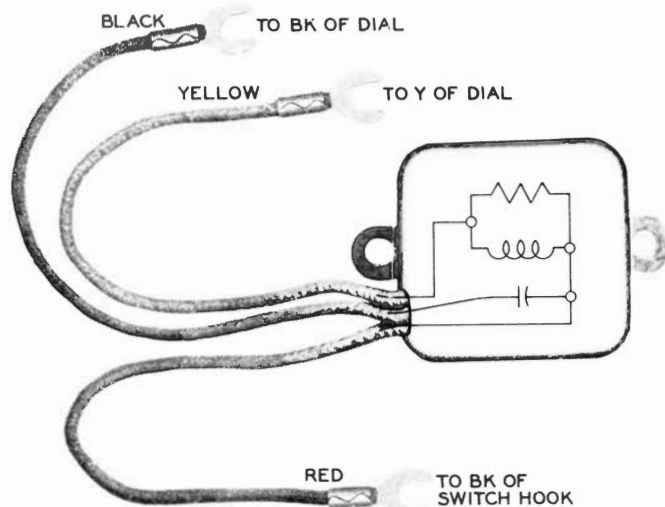


Fig. 5 — 61M Filter Connections