

BURNS, J. G. 3
DIVINS, G. C. 0
JACKSON, G. C. 5
KLAISS, M. J. 5
PERKINS, A. B. 1

1B AND 1BA TELEPHONE ANSWERING SETS

CONNECTIONS

1. GENERAL

1.01 This section provides connection information for the 1B and 1BA telephone answering sets. It is reissued to show connections to key equipment.

1.02 Telephone sets associated with 1B and 1BA telephone answering sets should have an antisidetone circuit, a high-impedance ringer, and should be equipped with an F- or G-type hand set. Connection information for the 700-type PRINCESS telephone set using E1A ringer is provided.

1.03 The 1BA telephone answering set may be modified for use with 532-type telephone sets for customers with impaired hearing. However, it must be specified when ordering answering set, "To be used with 532-type telephone," and may be identified as such by the letters VC stamped in 1/4-inch red characters adjacent to the nameplate.

1.04 For consideration of ringing bridge limitations, 1B and 1BA telephone answering sets are equivalent to the following number of ringing bridges (see Table A).

TABLE A

Service	Equivalent High-Impedance Ringing Bridges	Fig.
Individual Line (Bridged Ringing)	3*	1
	2†	2
All Other Classes of Service	3	3 through 10

* Without 531C subscriber set.

† With 531C subscriber set.

1.05 Connect the 1B and 1BA telephone answering sets as shown in Table B.

TABLE B

Service	Fig.
Key Equipment	9 or 10
Individual Line (Bridged Ringing)	1 or 2
2 Party*	3, 4, 5, 6, 7, or 8
4 Party*	3 or 4

* Selective flat or message rate, manual, or dial.

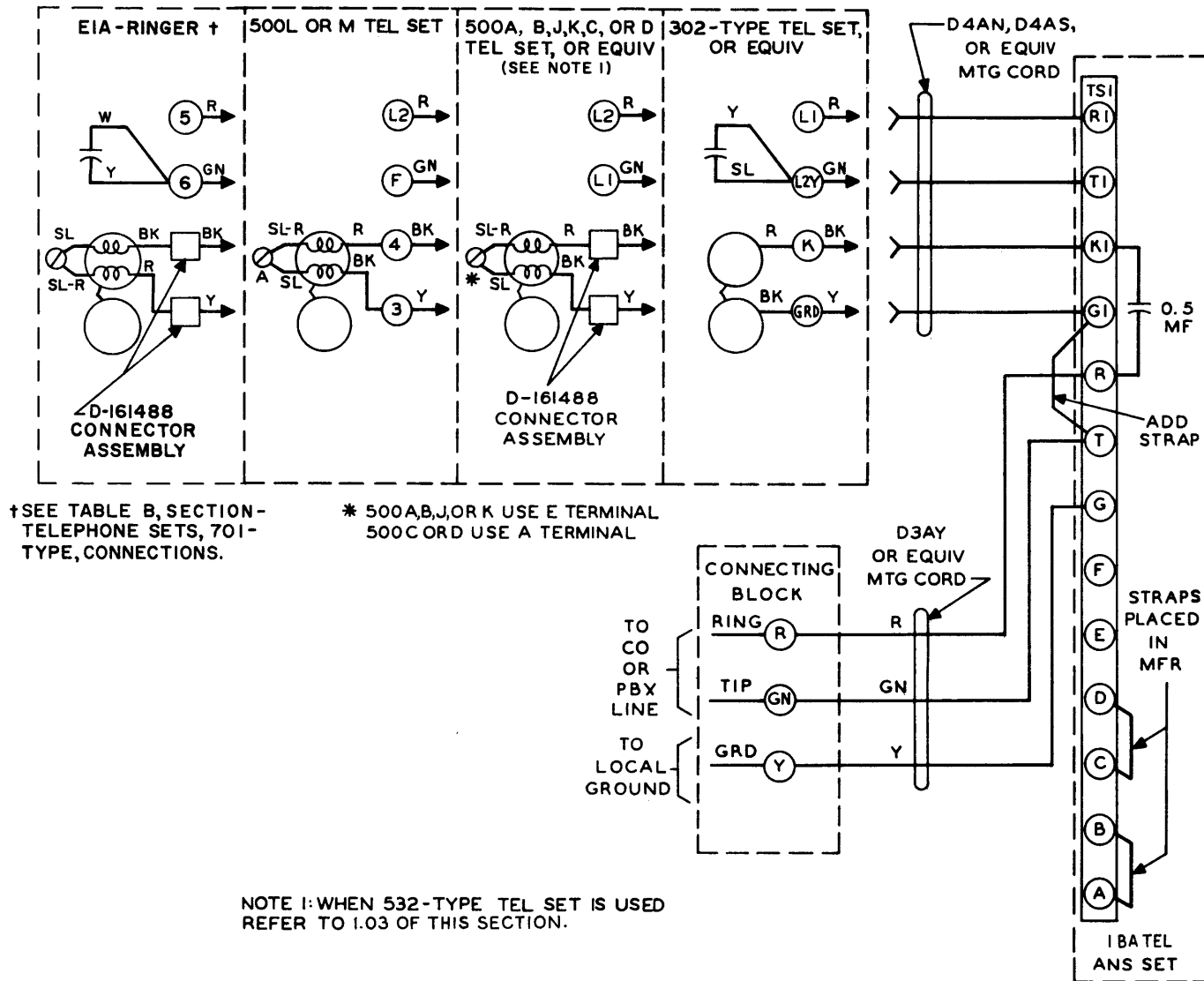


Fig. 1 — 1B and 1BA Telephone Answering Sets, Bridged Ringing

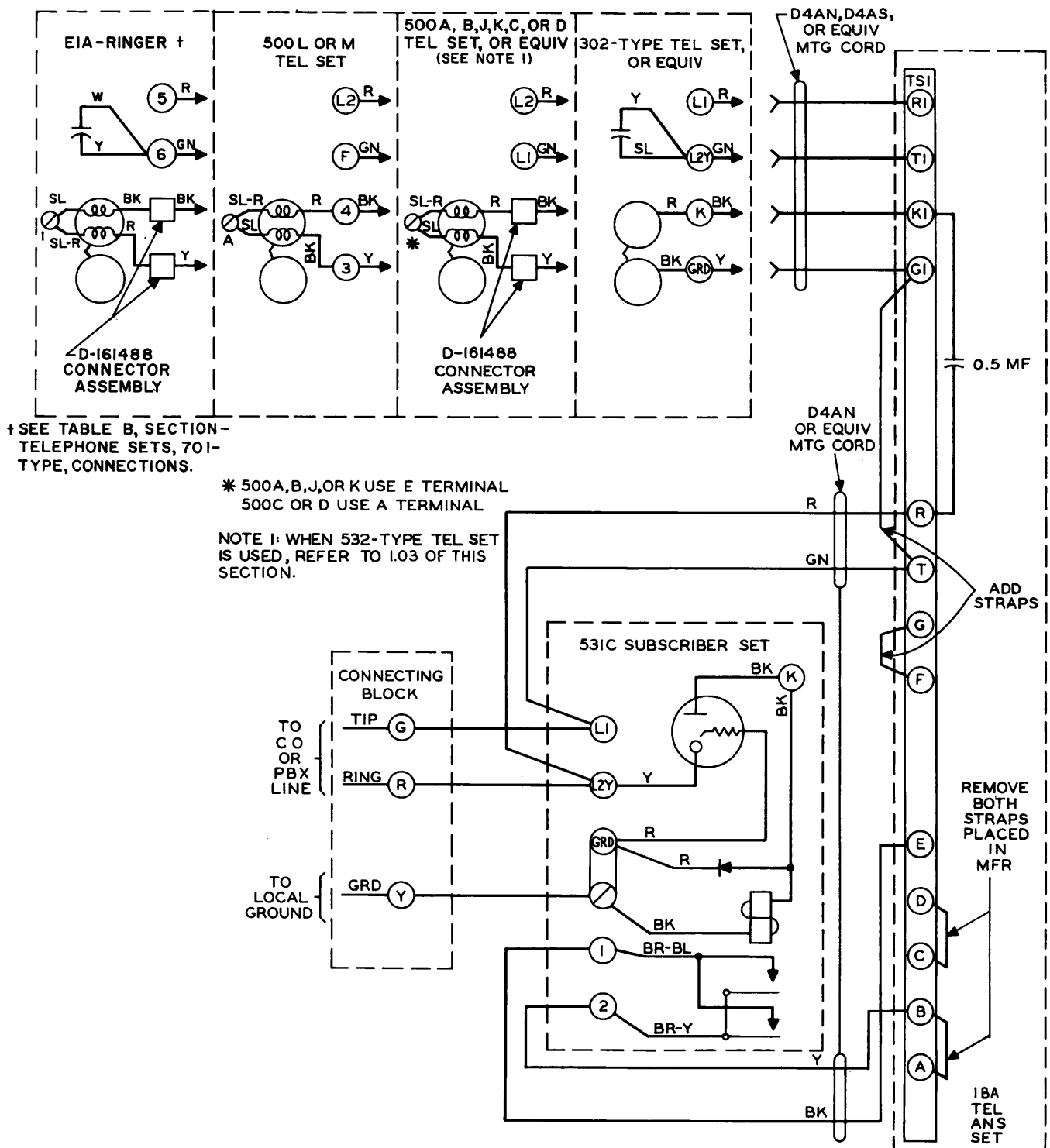
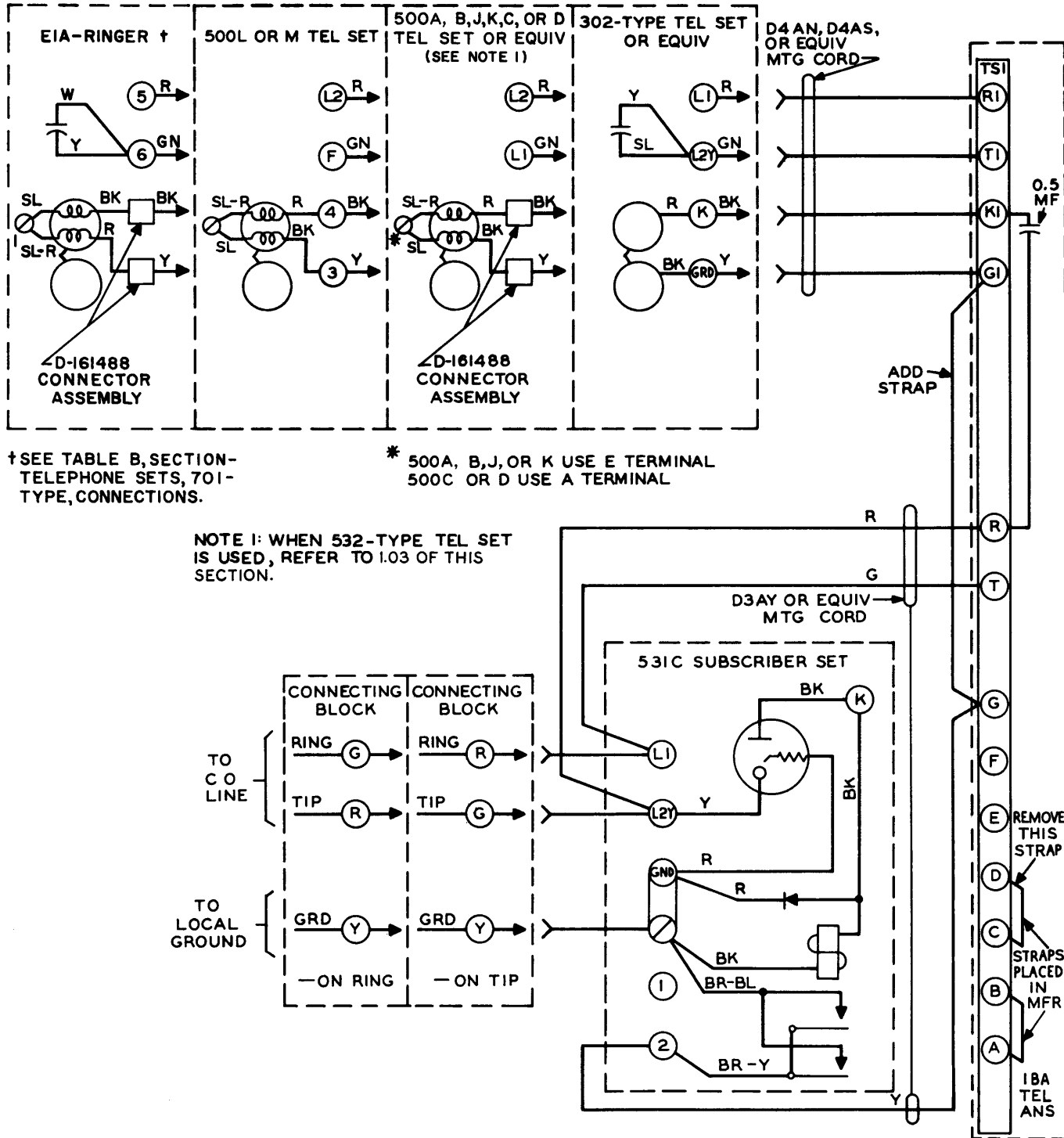


Fig. 2 — 1B and 1BA Telephone Answering Sets Station Connections for Bridged Ringing



**Fig. 3 — 1B and 1BA Telephone Answering Sets Station Connections for:
2-Party Selective Flat and Message, Manual 2-Party Selective Flat,
Dial 4-Party Selective Flat and Message, Manual and Dial —
Parties on Ring and Tip**

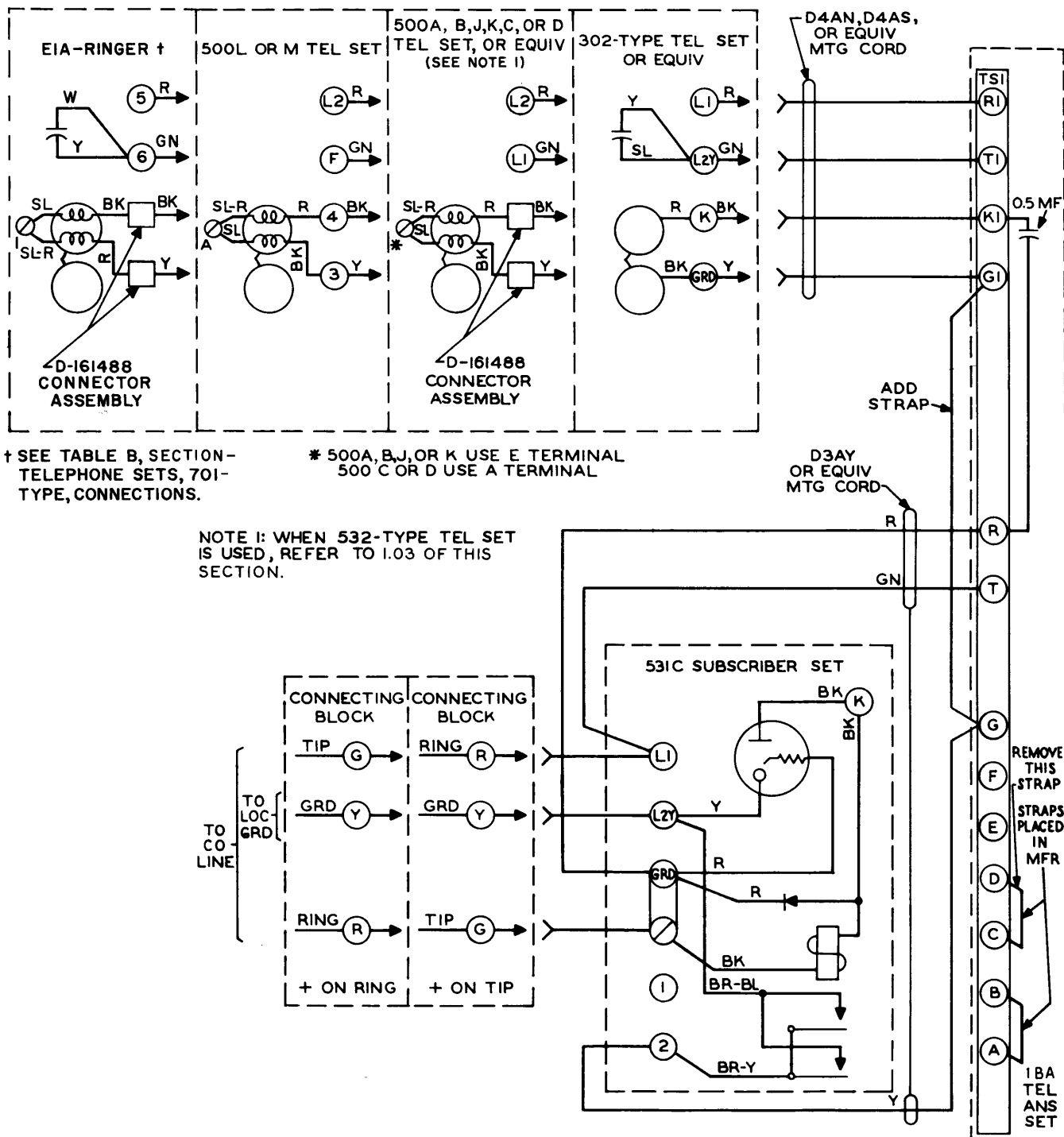


Fig. 4 — 1B and 1BA Telephone Answering Sets Station Connections for: 2-Party Selective Flat and Message, Manual 2-Party Selective Flat, Dial 4-Party Selective Flat and Message, Manual and Dial — Parties on Ring and Tip

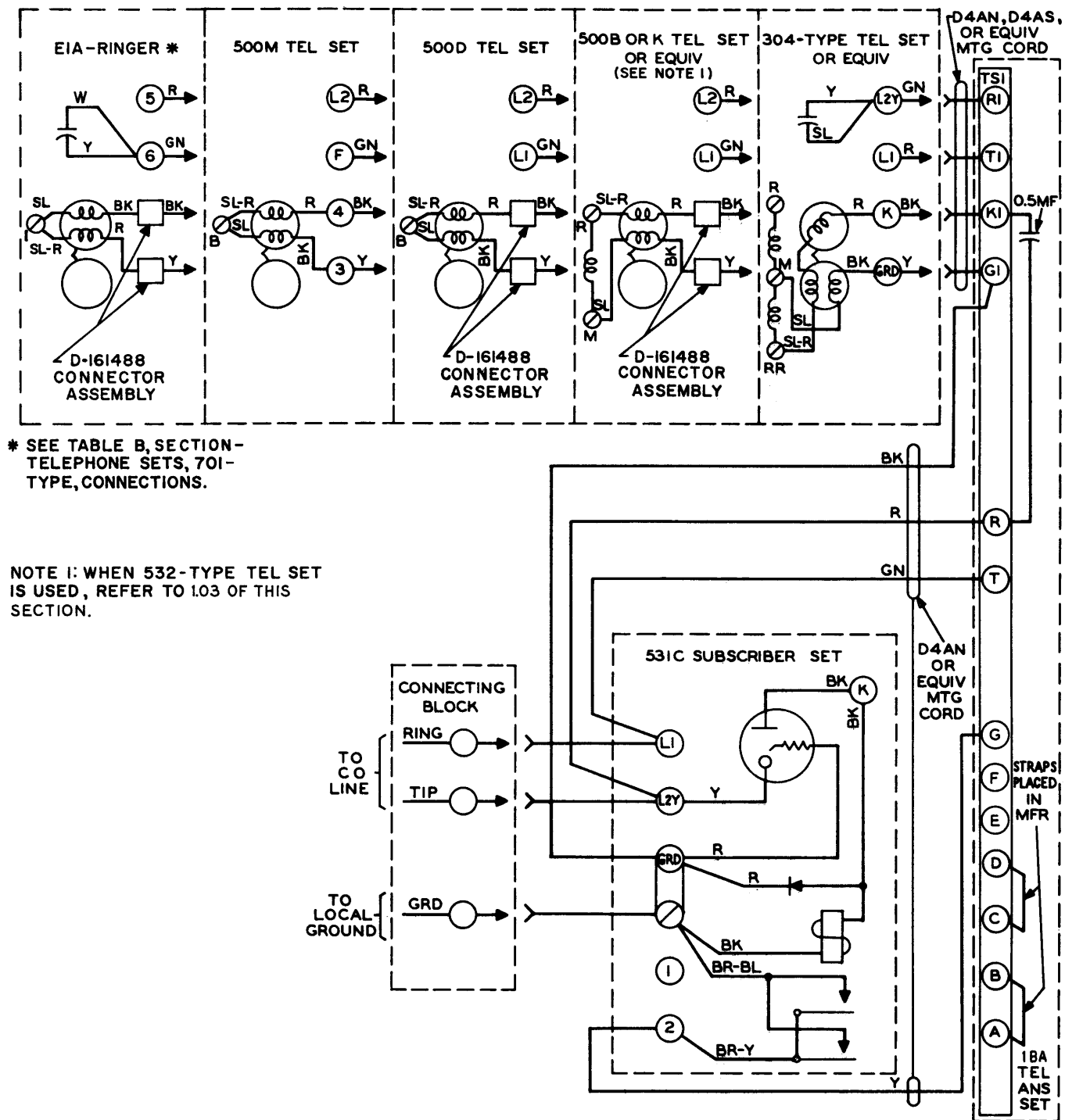


Fig. 5 — 1B and 1BA Telephone Answering Sets Station Connections for: 2-Party Selective Flat and Message, Dial—Tip Party in AMA, Zone, or Multiple Registration and—Tip Party Message Rate in Automatic Ticketing Areas

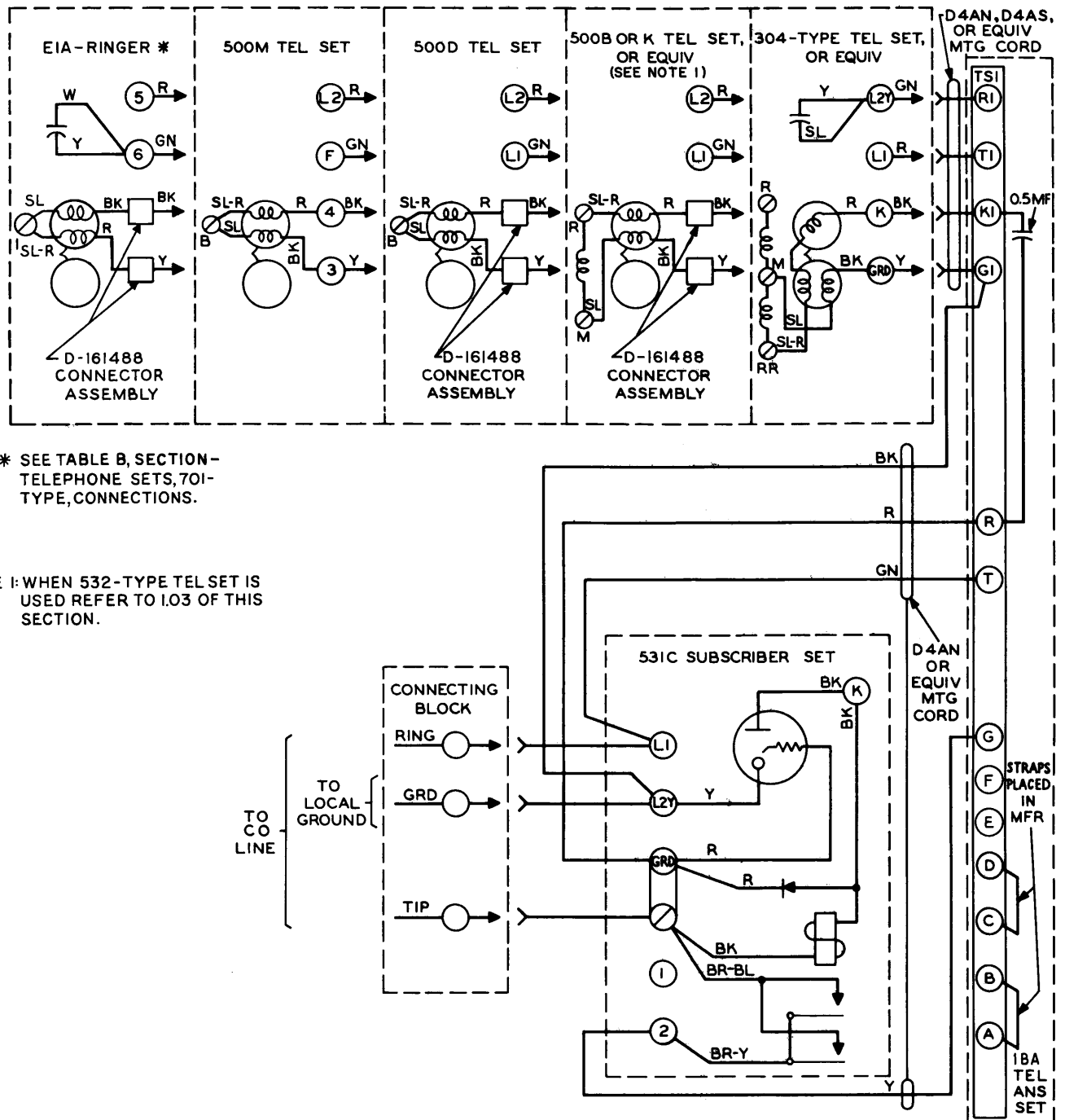


Fig. 6 — 1B and 1BA Telephone Answering Sets Station Connections for: 2-Party Selective Flat and Message, Dial—Tip Party in AMA, Zone, or Multiple Registration and—Tip Party Message in Automatic Ticketing Areas

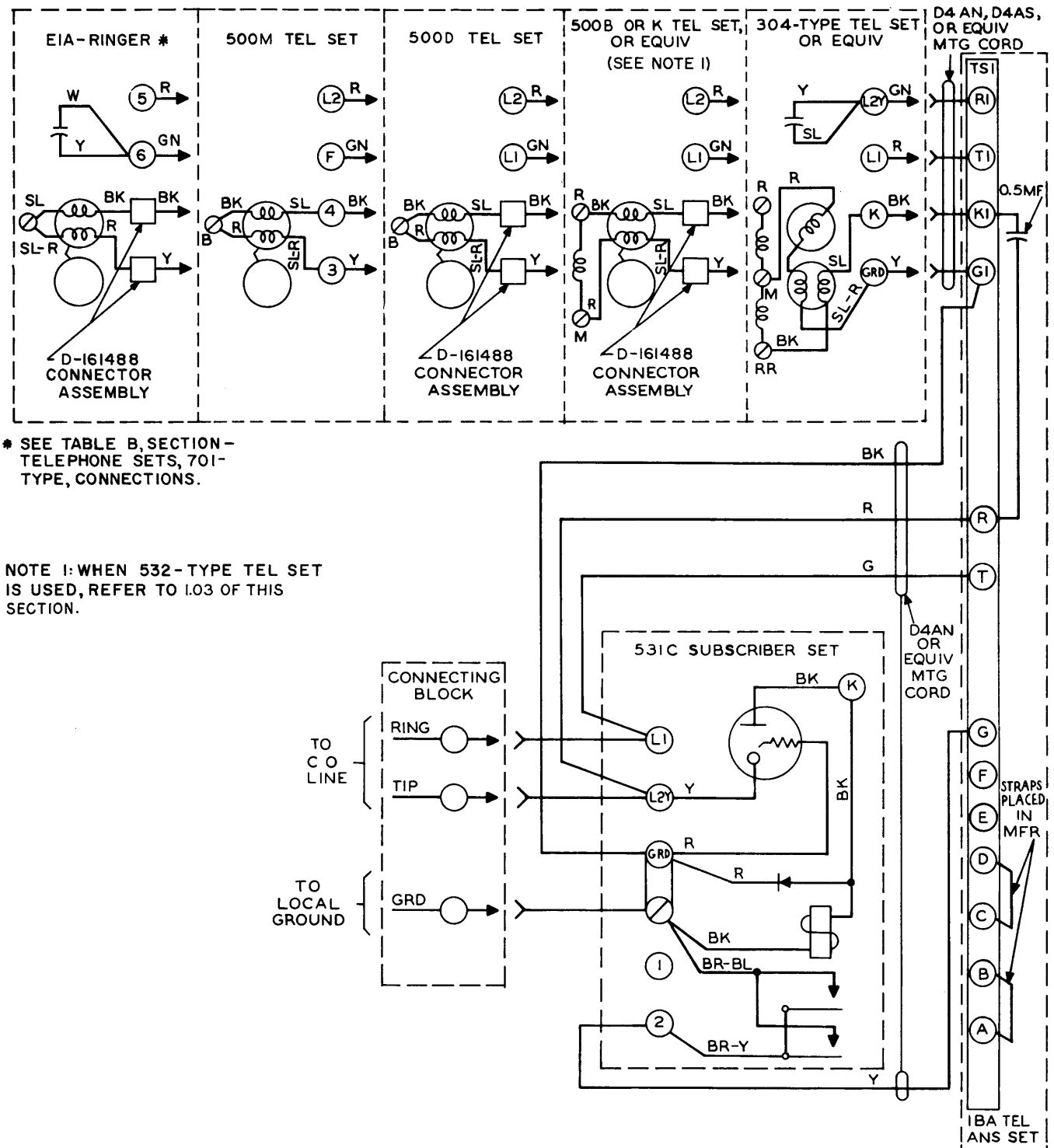
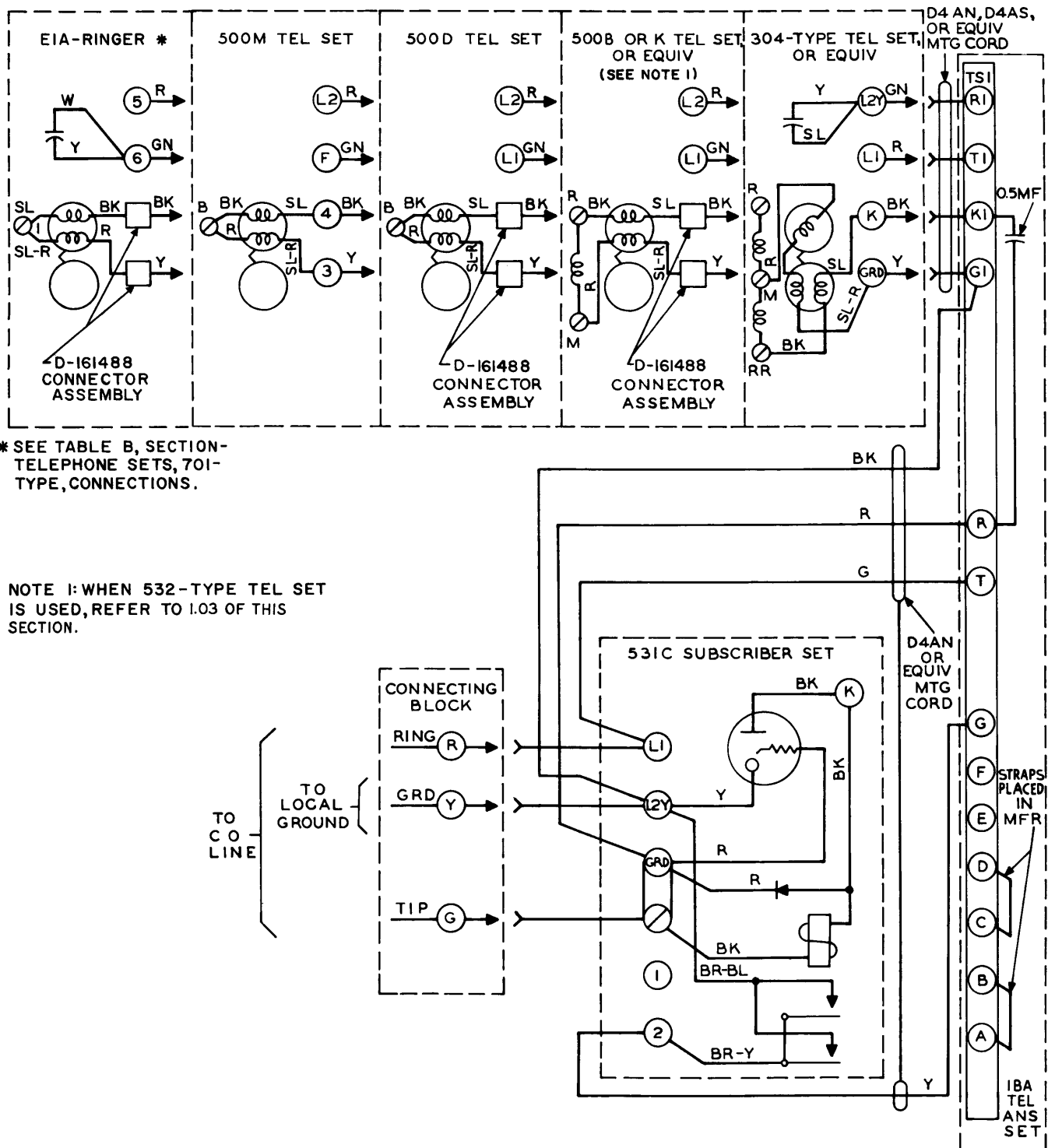
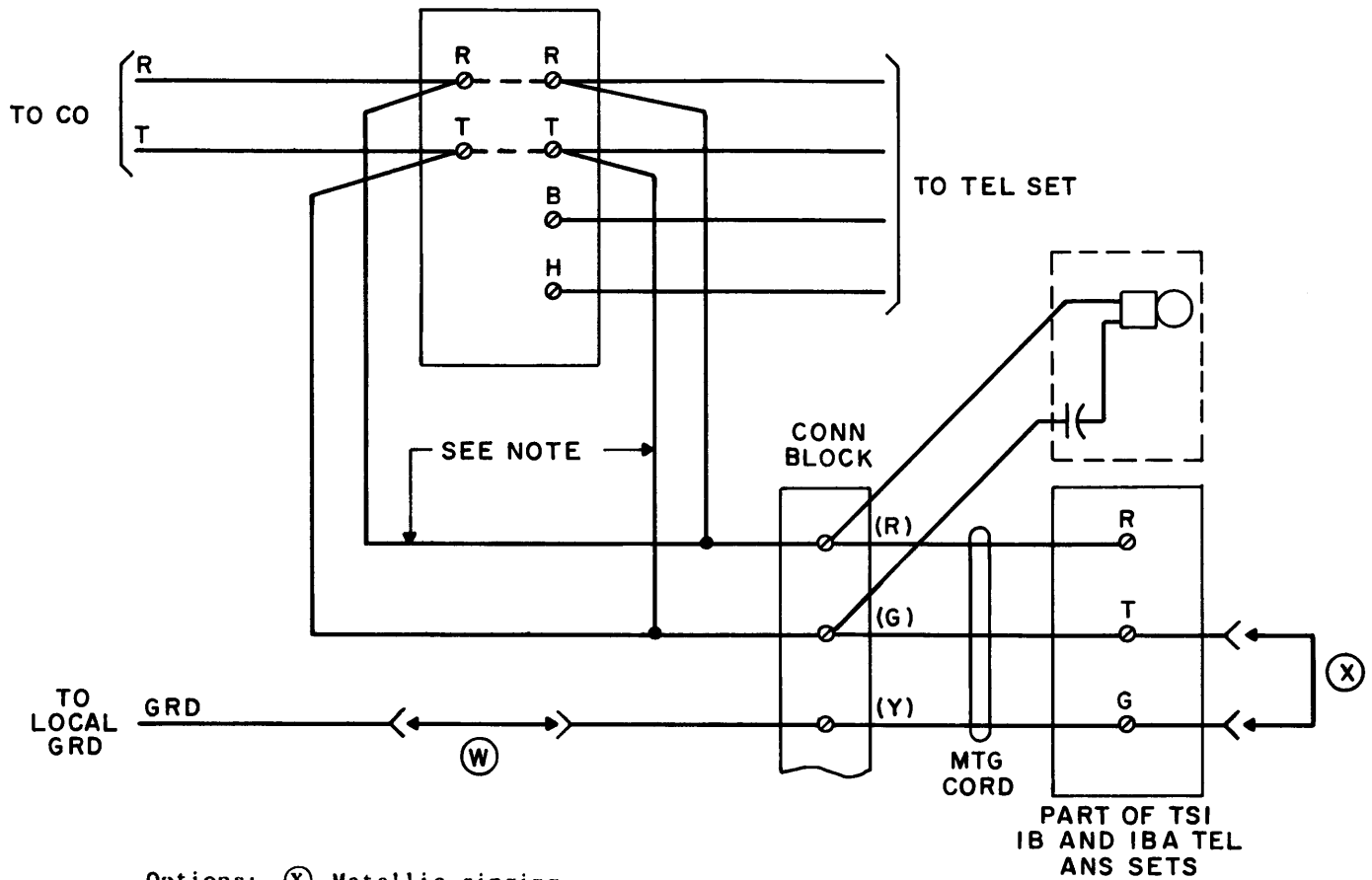


Fig. 7 - 1B and 1BA Telephone Answering Set Station Connections for:
2-Party Selective - Tip Party, Flat Rate, Automatic Ticketing



**Fig. 8 — 1B and 1BA Telephone Answering Sets Station Connections for:
2-Party Selective — Tip Party, Flat Rate, Automatic Ticketing**



Options: (X) Metallic ringing.

(W) Grounded ringing.

Note: Ans set may be connected on either side of KTU.

Fig. 9 — 1B and 1BA Telephone Answering Set Connections to 1A or 100 Key Telephone Systems

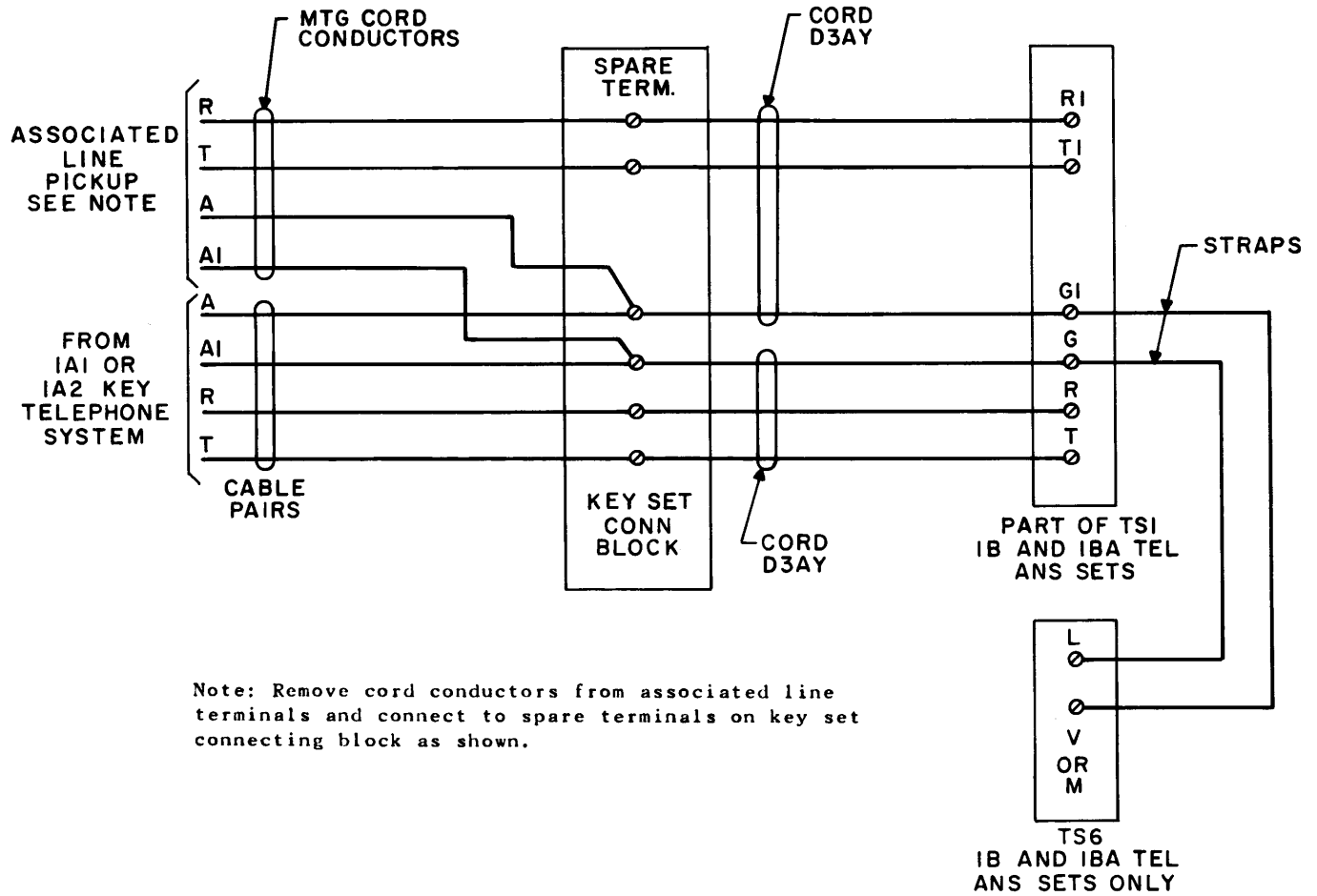


Fig. 10 — 1B and 1BA Telephone Answering Set Connections to 1A1 or 1A2 Key Telephone Systems

BELL SYSTEM PRACTICES
Plant Series

PLEASE NOTE AND RETURN:

BURNS, J. G. 3
DIVINS, G. C. 1
JACKSON, G. C. 4
KLAISS, M. J. 6
MORRIN, A. B. 7 1B and 1BA

ADDENDUM 514-120-400 Pa.
Issue A, May, 1961
Bell Telephone Co. of Pa.
PHILADELPHIA AREA

TELEPHONE ANSWERING SETS
CONNECTIONS

1. GENERAL

1.01 This addendum is issued to describe a method of connecting a 1B or 1BA answering set to a cordless switchboard.

1.02 The circuit described in this section is designed to perform the following functions:

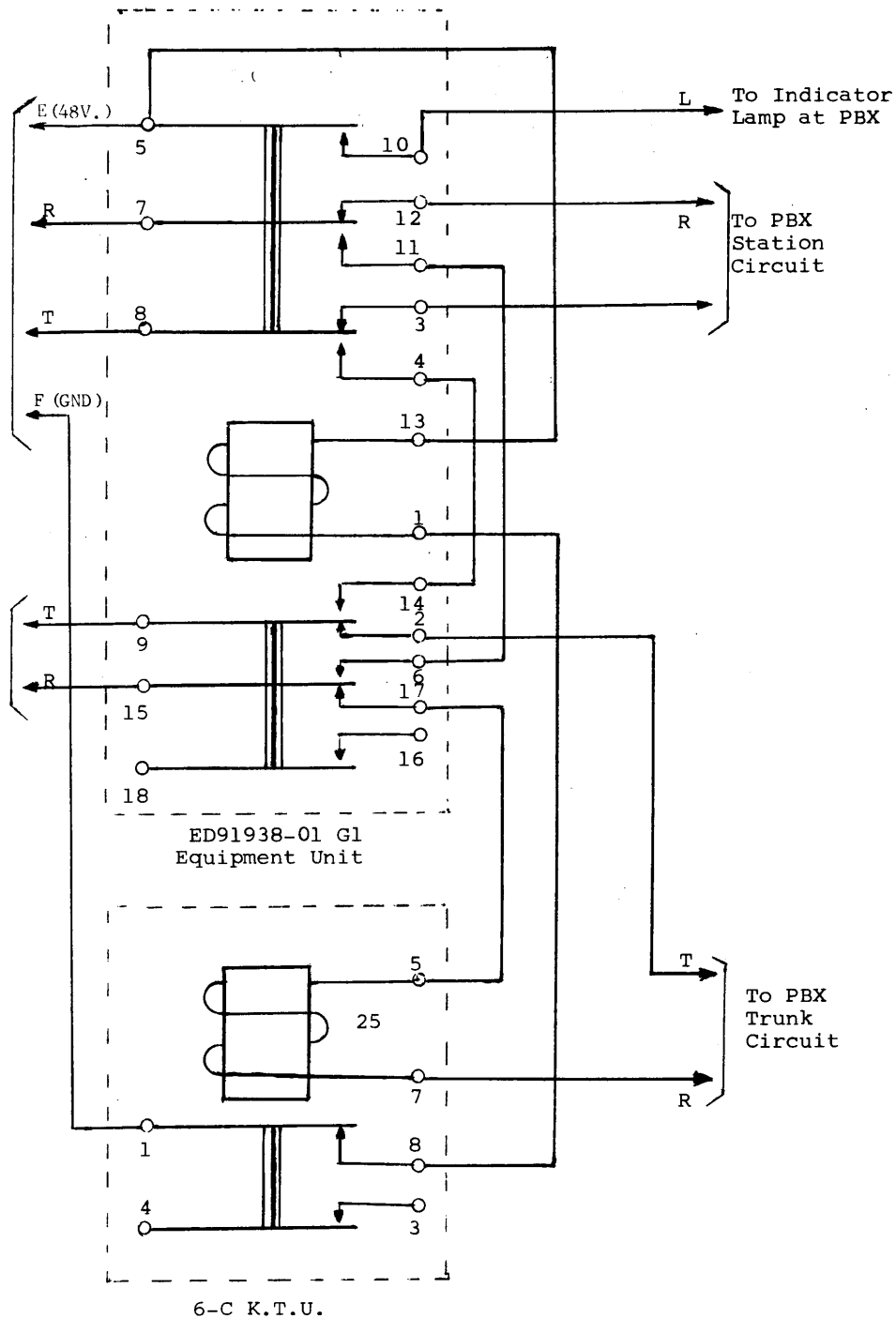
- 1 - With the answering set OFF-ON switch in the OFF position; --
 - A - The answering set is connected directly to the PBX station circuit.
 - B - The C.O. trunk is connected directly to the PBX trunk circuit.
- 2 - When the answering set OFF-ON switch is turned "ON" (during a period when the C.O. trunk is idle); --
 - A - Power is provided from the answering set to operate a relay which transfers the answering set from the station circuit to a specific C.O. trunk circuit.
 - B - The C.O. trunk is disconnected from the PBX trunk circuit.
 - C - Power is provided to an external lamp at the PBX to indicate that the answering set is turned on and all incoming calls on that particular trunk will be answered by the answering set.
- 3 - A guard circuit is provided to prevent the transfer circuit from operating during the period that the trunk is busy through the PBX. However, as soon as the trunk releases, the transfer will be completed, and subsequent incoming calls will connect to the answering set.

2. EQUIPMENT

2.01 The equipment shown in Figure 1 can be mounted conveniently in a 105-A or B apparatus box. This equipment is readily available through normal supply channels.

To
1 Type
Answering
Set and
Station
Equipment

To C.O.
Trunk



Transfer circuit for use when connecting a 1B or
a 1BA Type answering set to a cordless switchboard.

FIGURE 1