

STATION SETS — MAGNETO
WESTERN ELECTRIC COMPANY

IDENTIFICATION AND ASSEMBLY OF PARTS

PLEASE NOTE AND RETURN:
BURNS, J. G.
DINS, G. C.
JACKSON, G. C.
KLAISS, M. J.
PERRIN, A. B.

1.00 INTRODUCTION

This section covers the identification and assembly of parts of magneto sets manufactured by the Western Electric Company. The sets covered by this section are the 299, 300, 303, 315, 317, 400, 415, 417, and D-176680 types.

2.00 IDENTIFICATION

2.01 Figs. 1 to 4 show external views of typical magneto sets.

2.02 The SP417-type set, per D-157314 (handset type), consists of the same apparatus and parts as the corresponding hand-receiver type, except that the receiver, receiver cord, transmitter, transmitter bracket, and transmitter cord are replaced by the F1A handset; and the 143Y switchhook is replaced by SP143Y per D-157313.

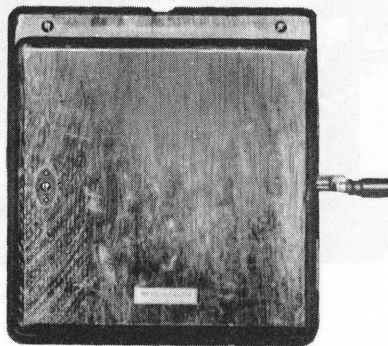


FIG. 1—299-TYPE MAGNETO SET

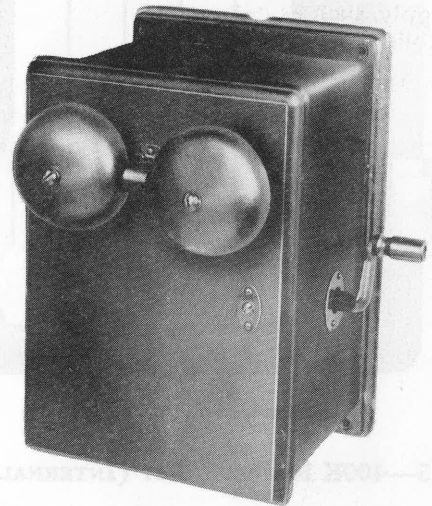


FIG. 3—400K MAGNETO SET

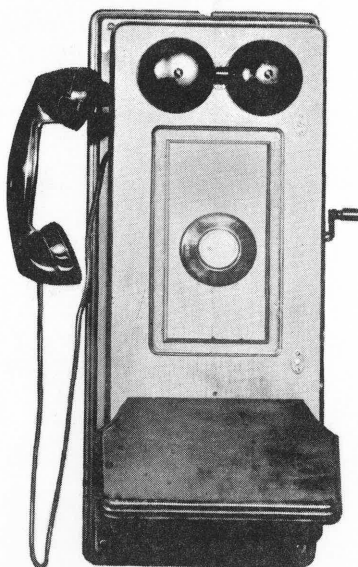


FIG. 2—SP417-TYPE SET PER D-157314

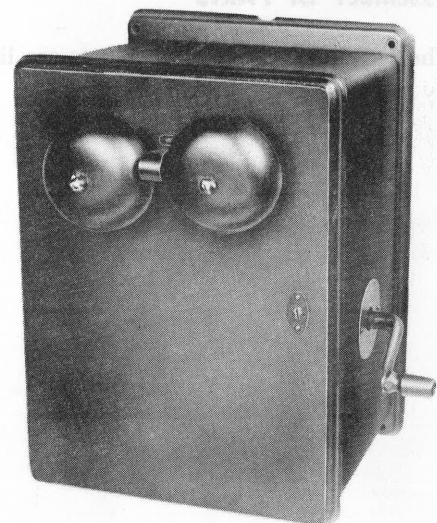


FIG. 4—315H MAGNETO SET

SECTION 510-310-100

2.03 Figs. 5 and 6 show internal views of the 400K and 415H sets.

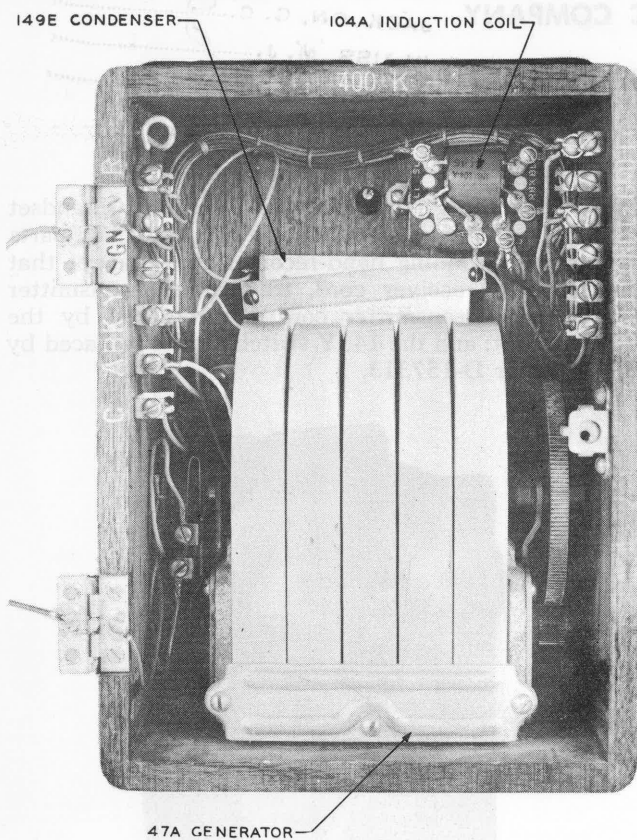


FIG. 5—400K MAGNETO SET (INTERNAL VIEW)

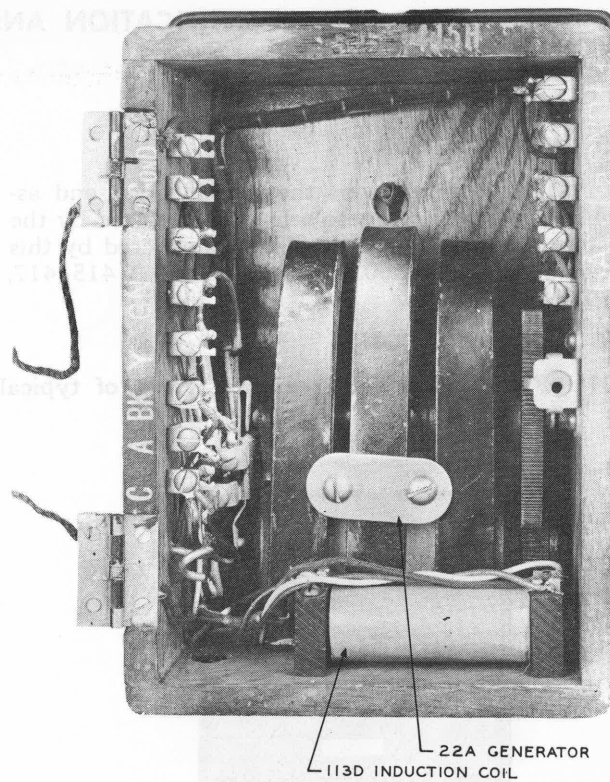


FIG. 6—415H MAGNETO SET (INTERNAL VIEW)

3.00 ASSEMBLY OF PARTS

The parts used in the above sets are listed in Table A.

TABLE A
SUBSCRIBER SETS — MAGNETO TYPE

Capacitor	Induction Coil	Ringer	Gongs	Generator	Switchhook	Receiver	Receiver Cord	Transmitter	Transmitter Bracket	Transmitter Cord	Station Number Plate	Miscellaneous
				47A								
				47B								
				48A								
				48B								
, 149E, or 449E when ified in the order	13	2B, 51A, 38B, or B1F with P-161282 clapper guard, or equivalent	Two 1, 25A or 29A (or 31A, 32A, 33A when specified in the order) with 2B or 51A ringer. Two 26A with 38B or B1F ringer.	47A or 48A								
e as 300A	13	51B, 38B, or B1F with P-161282 clapper guard, or equivalent	Two 1, 25 or 29A (or 31A, 32A, 33A when specified in the order) with 51B ringer. Two 26A with 38B or B1F ringer.	48A								
				22A								
	13	52A or B5A	Two 1, 25A or 29A (or 31A, 32A, 33A when specified in the order).	22E								
	13	51A, 38B, or B1F with P-161282 clapper guard, or equivalent	Same as 300A	22A								
e as 300A	13	85F	Two 17, 20, or 26A	48A	143Y	144	R2A, R2EM, or R2DW	323 or 337	8A	Two T1A or TIC	128B	
e as 300A	13	38B or B1F	Same as 317N	48A	143Y	144	R2A, R2EM, or R2DW	323 or 337	8A	Two T1A or TIC	128B	
, 149E, or 449E	13	38F	Same as 317N	48A	143Y	144	R2A, R2EM, or R2DW	323 or 337	8A	Two T1A or TIC	128B	
e as 317R	13	38B or B1F	Same as 317N	48A	143Y	144	R2A, R2EM, or R2DW	323 or 337	8A	Two T1A or TIC	128B	
e as 300A	13	38A, 38B, or B1F with P-161282 clapper guard, or equivalent	Same as 317N	22A	143Y	144	R2A, R2EM, or R2DW	323 or 337	8A	Two T1A or TIC	128B	
e as 300A	13	47B	Same as 317N	48B	143Y	144	R2A, R2EM, or R2DW	323 or 337	8A	Two T1A or TIC	128B	
e as 300A	13	55A or 55B	Two 1, 25A or 29A (or 31A, 32A, 33A when specified in the order).	22D	143Y	144	R2A, R2EM, or R2DW	323 or 337	8A	Two T1A or TIC	128B	
e as 300A	13	38B or B1F	Same as 317N	48A	143Y	144	R2A, R2EM, or R2DW	323 or 337	8A	Two T1A or TIC	128B	1006A Push Button
e as 300A	13	52A or B5A	Same as 315E	22E	143Y	144	R2A, R2EM, or R2DW	323 or 337	8A	Two T1A or TIC	128B	

TABLE A
SUBSCRIBER SETS — MAGNETO TYPE

Subs. Set	Capacitor	Induction Coil	Ringer	Gongs	Generator	Switchhook	Receiver	Receiver Cord	Transmitter	Transmitter Bracket	Transmitter Cord	Station Number Pl
299A					47A							
299E					47B							
299F					48A							
299G					48B							
300A	21W, 149E, or 449E when specified in the order	13	2B, 51A, 38B, or B1F with P-161282 clapper guard, or equivalent	Two 1, 25A or 29A (or 31A, 32A, 33A when specified in the order) with 2B or 51A ringer. Two 26A with 38B or B1F ringer.	47A or 48A							
300K	Same as 300A	13	51B, 38B, or B1F with P-161282 clapper guard, or equivalent	Two 1, 25 or 29A (or 31A, 32A, 33A when specified in the order) with 51B ringer. Two 26A with 38B or B1F ringer.	48A							
303A					22A							
315E		13	52A or B5A	Two 1, 25A or 29A (or 31A, 32A, 33A when specified in the order).	22E							
315H		13	51A, 38B, or B1F with P-161282 clapper guard, or equivalent	Same as 300A	22A							
317N	Same as 300A	13	85F	Two 17, 20, or 26A	48A	143Y	144	R2A, R2EM, or R2DW	323 or 337	8A	Two T1A or T1C	128B
317P	Same as 300A	13	38B or B1F	Same as 317N	48A	143Y	144	R2A, R2EM, or R2DW	323 or 337	8A	Two T1A or T1C	128B
317R	21W, 149E, or 449E	13	38F	Same as 317N	48A	143Y	144	R2A, R2EM, or R2DW	323 or 337	8A	Two T1A or T1C	128B
317S	Same as 317R	13	38B or B1F	Same as 317N	48A	143Y	144	R2A, R2EM, or R2DW	323 or 337	8A	Two T1A or T1C	128B
317AH	Same as 300A	13	38A, 38B, or B1F with P-161282 clapper guard, or equivalent	Same as 317N	22A	143Y	144	R2A, R2EM, or R2DW	323 or 337	8A	Two T1A or T1C	128B
317AK	Same as 300A	13	47B	Same as 317N	48B	143Y	144	R2A, R2EM, or R2DW	323 or 337	8A	Two T1A or T1C	128B
317AU	Same as 300A	13	55A or 55B	Two 1, 25A or 29A (or 31A, 32A, 33A when specified in the order).	22D	143Y	144	R2A, R2EM, or R2DW	323 or 337	8A	Two T1A or T1C	128B
317BB	Same as 300A	13	38B or B1F	Same as 317N	48A	143Y	144	R2A, R2EM, or R2DW	323 or 337	8A	Two T1A or T1C	128B
317BS	Same as 300A	13	52A or B5A	Same as 315E	22E	143Y	144	R2A, R2EM, or R2DW	323 or 337	8A	Two T1A or T1C	128B

TABLE A (Contd)

Capacitor	Induction Coil	Ringer	Gongs	Generator	Switchhook	Receiver	Receiver Cord	Transmitter	Transmitter Bracket	Transmitter Cord	Station Number Plate	Miscellaneous
1W, 149E, or 449E when pecified in the order; 149F, 49F , 1149B, or 449H with 04A coil and only when pecified in the order with 13D coil	113D or 104A	2B, 51B, 38B, or B1F with P-161282 clapper guard, or equivalent	Same as 300A	47A								When specified in the order, KS-13492, L2 (390 ohms) resistor with 104A coil or KS-13490, L2 (300 ohms) resistor with 113D coil
ame as 400A	113D or 104A	Same as 300K	Same as 300K	48A								Same as 400A
ame as 400A	113D or 104A	66JA or B1E	Same as 317N	22A or 48A with 63P (1000-ohm resistor)								Same as 400A
49F, 449F , 1149B, or 49H with 104A coil; only hen specified in the order ith 113D coil	113D or 104A	52A or B5A	Same as 315E	22E								Same as 400A
ame as 415E	113D or 104A	Same as 315H	Same as 300A	22A								Same as 400A
ame as 415E	113D or 104A	6JA or B1D	Same as 315E	22A								Same as 400A
ame as 400A	113D or 104A	38F	Same as 317N	48A	143Y	144 or 706A	R2A, R2B, or R2DW	323, 337, or 635A	8A	Two T1A or T1C	128B or 50H	Same as 400A
ame as 400A	113D or 104A	38B or B1F	Same as 317N	48A	143Y	144 or 706A	R2A, R2B, or R2DW	323, 337, or 635A	8A	Two T1A or T1C	128B or 50H	Same as 400A
1W, 149E, or 449E with 04A or 113D coil; 149F, 49F , 1149B, or 449H with 04A coil and only when pecified in the order with 13D coil	113D or 104A	38F	Same as 317N	48A	143Y	144 or 706A	R2A, R2B, or R2DW	323, 337, or 635A	8A	Two T1A or T1C	128B or 50H	Same as 400A
1W, 149E, or 449E with 04A or 113D coil; 149F, 49F , 1149B, or 449H with 04A coil; only when speci- ed in the order with 113D il	113D or 104A	38B or B1F	Same as 317N	48A	143Y	144 or 706A	R2A, R2B, or R2DW	323, 337, or 635A	8A	Two T1A or T1C	128B or 50H	Same as 400A
ame as 400A	113D or 104A	Same as 317AH	Same as 317AH	22A	143Y	144 or 706A	R2A, R2B, or R2DW	323, 337, or 635A	8A	Two T1A or T1C	128B or 50H	Same as 400A
ame as 400A	113D or 104A	47B	Same as 317AK	48B	143Y	144 or 706A	R2A, R2B, or R2DW	323, 337, or 635A	8A	Two T1A or T1C	128B or 50H	Same as 400A
ame as 400A	113D or 104A	55A or 55B	Same as 317AU	22D	143Y	144 or 706A	R2A, R2B, or R2DW	323, 337, or 635A	8A	Two T1A or T1C	128B or 50H	Same as 400A
ame as 400A	113D or 104A	38B or B1E	Same as 317N	48A	143Y	144 or 706A	R2A, R2B, or R2DW	323, 337, or 635A	8A	Two T1A or T1C	128B or 50H	1006A push button and re- sistor, same as 400A
ame as 400A	113D or 104A	52A or B5A	Same as 315E	22E	143Y	144 or 706A	R2A, R2B, or R2DW	323, 337, or 635A	8A	Two T1A or T1C	128B or 50H	Same as 400A
ame as 400A	113D or 104A	66JA or B1E	Same as 317N	Same as 400CD	143Y	144 or 706A	R2A, R2B, or R2DW	323, 337, or 635A	8A	Two T1A or T1C	128B or 50H	Same as 400A
				D-176681								

ded parts are listed, those in bold-face type should be ordered.
nger is needed as a replacement for the 37F ringer in the 317N, 317R, 417N, or 417R set, that set
17S, 417P, or 417S set, respectively.
300A and 400A sets with the 38B or B1F ringer should be drilled for the clapper guard P-161282,
or as the covers of the 315H and 415H sets equipped with clapper guard P-124709.

TABLE A (Contd)

Subs. Set	Capacitor	Induction Coil	Ringer	Gongs	Generator	Switchhook	Receiver	Receiver Cord	Transmitter	Transmitter Bracket	Transmitter Cord	Station Number Plate	
400A	21W, 149E, or 449E when specified in the order; 149F, 449F , 1149B, or 449H with 104A coil and only when specified in the order with 113D coil	113D or 104A	2B, 51B, 38B, or B1F with P-161282 clapper guard, or equivalent	Same as 300A	47A								W K K
400K	Same as 400A	113D or 104A	Same as 300K	Same as 300K	48A								S
400CD	Same as 400A	113D or 104A	66JA or B1E	Same as 317N	22A or 48A with 63P (1000-ohm resistor)								S
415E	149F, 449F , 1149B, or 449H with 104A coil; only when specified in the order with 113D coil	113D or 104A	52A or B5A	Same as 315E	22E								S
415H	Same as 415E	113D or 104A	Same as 315H	Same as 300A	22A								S
415CD	Same as 415E	113D or 104A	6JA or B1D	Same as 315E	22A								S
417N	Same as 400A	113D or 104A	38F	Same as 317N	48A	143Y	144 or 706A	R2A, R2B, or R2DW	323, 337, or 635A	8A	Two T1A or TIC	128B or 50H	S
417P	Same as 400A	113D or 104A	38B or B1F	Same as 317N	48A	143Y	144 or 706A	R2A, R2B, or R2DW	323, 337, or 635A	8A	Two T1A or TIC	128B or 50H	S
417R	21W, 149E, or 449E with 104A or 113D coil; 149F, 449F , 1149B, or 449H with 104A coil and only when specified in the order with 113D coil	113D or 104A	38F	Same as 317N	48A	143Y	144 or 706A	R2A, R2B, or R2DW	323, 337, or 635A	8A	Two T1A or TIC	128B or 50H	S
417S	21W, 149E, or 449E with 104A or 113D coil; 149F, 449F , 1149B, or 449H with 104A coil; only when specified in the order with 113D coil	113D or 104A	38B or B1F	Same as 317N	48A	143Y	144 or 706A	R2A, R2B, or R2DW	323, 337, or 635A	8A	Two T1A or TIC	128B or 50H	S
417AH	Same as 400A	113D or 104A	Same as 317AH	Same as 317AH	22A	143Y	144 or 706A	R2A, R2B, or R2DW	323, 337, or 635A	8A	Two T1A or TIC	128B or 50H	S
417AK	Same as 400A	113D or 104A	47B	Same as 317AK	48B	143Y	144 or 706A	R2A, R2B, or R2DW	323, 337, or 635A	8A	Two T1A or TIC	128B or 50H	S
417AU	Same as 400A	113D or 104A	55A or 55B	Same as 317AU	22D	143Y	144 or 706A	R2A, R2B, or R2DW	323, 337, or 635A	8A	Two T1A or TIC	128B or 50H	S
417BB	Same as 400A	113D or 104A	38B or B1E	Same as 317N	48A	143Y	144 or 706A	R2A, R2B, or R2DW	323, 337, or 635A	8A	Two T1A or TIC	128B or 50H	1 s
417BS	Same as 400A	113D or 104A	52A or B5A	Same as 315E	22E	143Y	144 or 706A	R2A, R2B, or R2DW	323, 337, or 635A	8A	Two T1A or TIC	128B or 50H	S
417CD	Same as 400A	113D or 104A	66JA or B1E	Same as 317N	Same as 400CD	143Y	144 or 706A	R2A, R2B, or R2DW	323, 337, or 635A	8A	Two T1A or TIC	128B or 50H	S
D-176680					D-176681								

NOTES

- Where alternate coded parts are listed, those in bold-face type should be ordered.
- If a 38B or B1F ringer is needed as a replacement for the 37F ringer in the 317N, 317R, 417N, or 417R set, that set becomes a 317P, 317S, 417P, or 417S set, respectively.
- The covers of the 300A and 400A sets with the 38B or B1F ringer should be drilled for the clapper guard P-161282, in the same manner as the covers of the 315H and 415H sets equipped with clapper guard P-124709.