

BOOTHS — INDOOR

5, 6, 10, AND 11 TYPES

IDENTIFICATION

1.00 INTRODUCTION

1.01 This section identifies the 5-, 6-, 10-, and 11-type booths; 18-type shelves; 2-, 3-, and 4-type light fixtures; and presents diagrams of power cables for booths.

2.00 GENERAL

2.01 The 10- and 11-type booths supersede the 5- and 6-type, respectively, for all general purposes.

2.02 The 5- and 6-type booths may be equipped with a KS-8164 fan, if required.

2.03 When ordering a 10- or 11-type booth, specify whether a KS-14125, List 5 (ac) or List 6 (dc) blower is required; otherwise, an apparatus blank will be provided.

2.04 Booths are furnished with light fixtures, lead-ins, or interconnecting cables when specified on the order. To avoid damage in transportation, directory lights are frequently added in the field.

2.05 Back panels, end panels, and separators are not included under booth codes and must be ordered separately. When ordering end panels drilled for directory lights, specify right or left side as required.

2.06 Where it is necessary for the customer to gain access to space behind booths, install a 5- or 10-type booth with a 53T back panel finished in the same color as other panels. Installation of these panels should not be attempted on the customer's premises; they should be ordered with the booth.

2.07 When a booth with a seat is required at a location having a 5- or 10-type already in service, consider replacing the booth with a 6- or 11-type. The work of installing a seat and lowering the shelf and backboard in a 5- or 10-type booth is extensive, and it is recommended that it not be done on the customer's premises.

2.08 When ordering a booth, specify whether a card frame with glass or plastic window is required, and where it is to be installed within the booth. Following is a list of the combinations which can be ordered:

KS-14123 Card Frame

List 1 — Frame only

List 2 — Glass Window

List 3 — Plastic Window

List 4 — Frame with Glass Window

List 5 — Frame with Plastic Window

3.00 5- AND 6-TYPE BOOTHS

3.01 The 5- and 6-type booths are similar except that the 6-type is equipped with a seat (Fig. 1). The shelf and backboard, therefore, are mounted lower in the 6-type than they are in the 5-type booth.

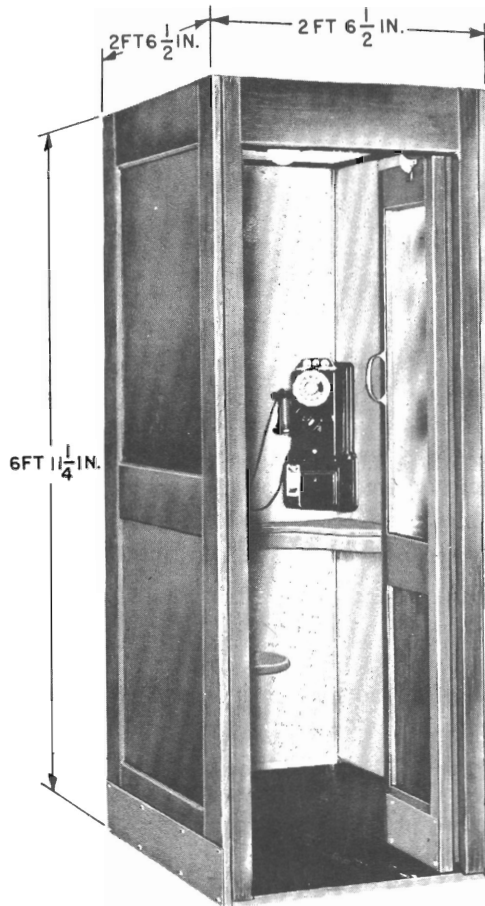


Fig. 1 — 6-type Booth

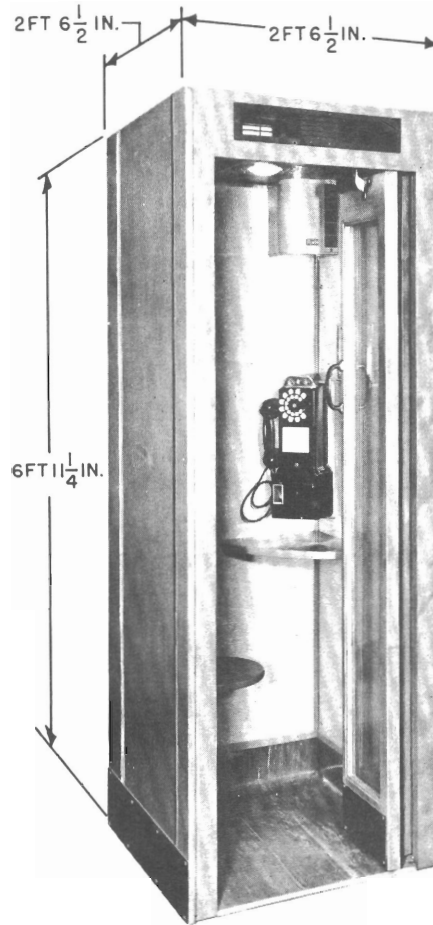


Fig. 2 — 11-type Booth

3.02 These booths are furnished with an 18-type shelf and a 167A-3 backboard. In addition, the 6-type is furnished with a 101T seat.

3.03 The doors in all 5- and 6-type booths have glass panels in the upper half only.

3.04 See Table A for a list of coded 5- and 6-type booths.

4.00 10- AND 11-TYPE BOOTHS

4.01 The 10- and 11-type booths are similar except that the 11-type is equipped with a seat (Fig. 2). The shelf and backboard, therefore, are mounted lower in the 11-type than they are in the 10-type booth.

4.02 The 10- and 11-type booths are furnished with a 167A-32 backboard and an 18-type shelf, both having a beige porcelain-enamel finish to harmonize with the lining of the booth. In addition, the 11-type is furnished with a 101U seat. The wooden portion of the seat is russet in color, and the bracket is finished in beige enamel to match the finish of the booth lining.

4.03 The doors in all 10- and 11-type booths are furnished with full-length glass panels. The grille in the header serves as an intake and exhaust path for the air circulated by the blower.

4.04 See Table B for a list of coded 10- and 11-type booths.

TABLE A
5- AND 6-TYPE BOOTHS

Booth Code		Finish	Material of Front	Panels*		Separator*
				End	Back	
5B	6B	Medium Mahogany	Birch	61B	62B	1A
5D	6D	Medium Oak	Oak	61D	62D	1C
5F	6F	Dark Mahogany	Birch	61F	62F	1E
5H	6H	Walnut		61H	62H	1G
5K	6K		Walnut	61H		1T
5M	6M	Unfinished	Birch	61T	62T	
5P	6P					1T
5S	6S					
5T	6T					
5U	6U	Medium Oak		61U	62U	1U

* See 2.05.

TABLE B
10- AND 11-TYPE BOOTHS

Booth Code		Finish	Material of Front	Panels*		Separator*
				End	Back	
10B	11B	Medium Mahogany	Birch	61B	62B	1A
10D	11D	Oak	Oak	61D	62D	1C
10F	11F	Dark Mahogany	Birch	61F	62F	1E
10H	11H	Walnut		61H	62H	1G
10P	11P	Unfinished	Oak	61P	62P	1N
10T	11T		Birch	61T	62T	1T
10U	11U	Oak		61U	62U	1U
10W	11W	Natural Birch		61W	62W	1W
10AA	11AA	Red†	Birch	61AA	62AA	1AA
10AB	11AB	Green†		61AB	62AB	1AB
10AC	11AC	Tan†		61AC	62AC	1AC

* See 2.05.

† Multicolored lacquer.

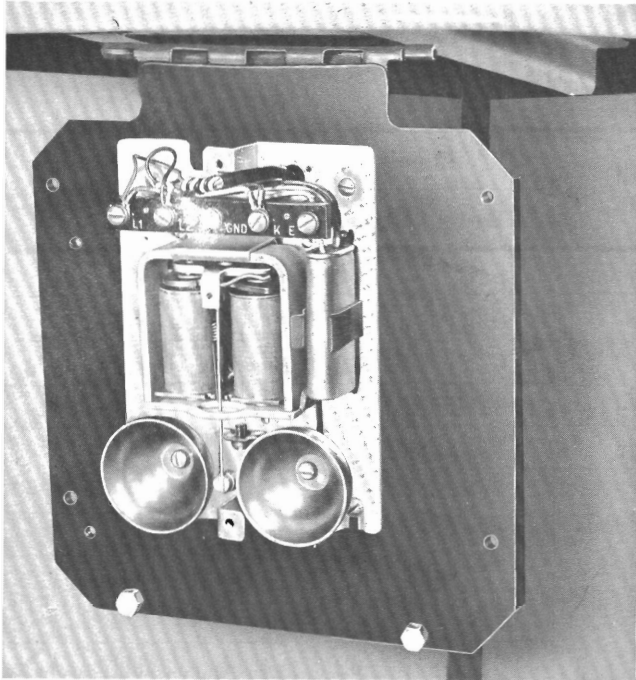


Fig. 3 — Hinged Mounting Plate on 18-type Shelf

5.00 18-TYPE SHELF

5.01 The 18-type shelf is a metal shelf with beige porcelain-enamel finish. It is intended for use as a corner writing shelf and arm rest in 9-, 10-, and 11-type booths.

5.02 It is equipped on the underside with a hinged mounting plate which is arranged for mounting a 531-, 634-, 684-, or 685-type subscriber set or E1A ringer (Fig. 3).

6.00 LIGHT FIXTURES

6.01 A 544A key is used to gain access to lamps, wire connections, and the light switch. The 544A key and the lamps must be ordered separately.

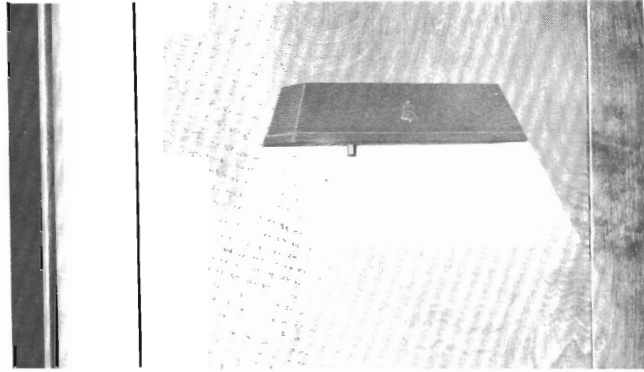


Fig. 4 — 2-type Light Fixture

2-type Light Fixture

6.02 The 2-type light fixture consists of a metal shade provided with a pull-chain lamp socket (Fig. 4).

6.03 This fixture is used as a directory light on end panels when these panels are equipped with directory shelves.

6.04 The fixture coded 2B comes without cable assembly P-385425 which must be ordered separately. The fixture coded 2D comes equipped with cable assembly P-385425 already attached.

3-type Light Fixture

6.05 The 3-type light fixture, used in 5-, 6-, and 9-type booths, has a white lens mounted in a flush-type metal plate with ventilating slots. The fixture has an outlet box containing a lamp receptacle and a light switch enclosed by a hinged cover. Also, it has a vertical and a horizontal rod for operating the light switch from the booth door (Fig. 5).

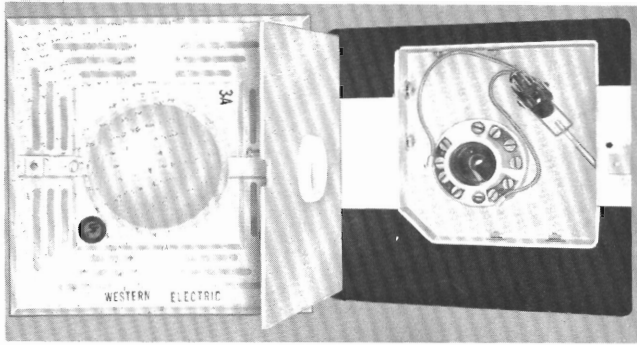


Fig. 5 — 3-type Light Fixture

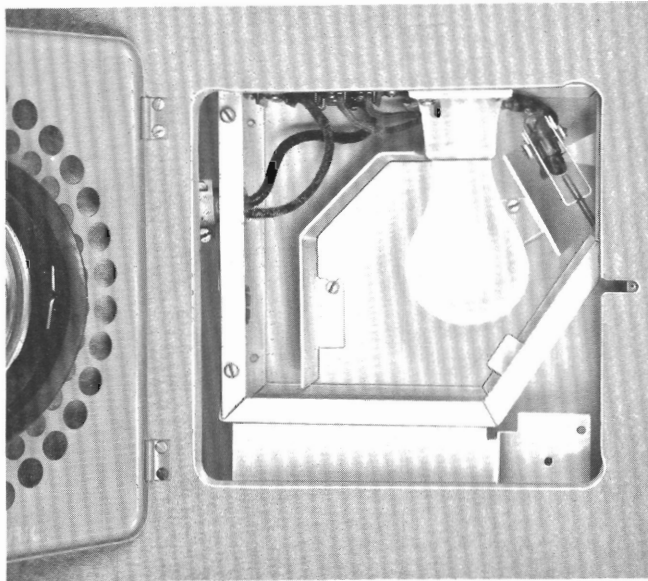


Fig. 6 — 4A Light Fixture

4A Light Fixture

6.06 The 4A light fixture is used in the 9-, 10-, and 11-type booths and serves as a junction point for supplying power to a blower, directory light, telephone sign, and adjacent booths (Fig. 6).

6.07 The 4A light fixture has a clear lens mounted in a hinged, beige-finished, metal cover having ventilating holes. It has a 42A connecting block for telephone wiring, and an outlet box containing a lamp socket, a switch, and a terminal strip for connection to the power supply. It is also equipped with a rod connected to the booth door and a switch which operates the lamp and blower when the booth door is closed.

6.08 Access to the lamp is made from inside the booth by loosening a captive screw in the metal cover.

7.00 GROUNDING WIRE ASSEMBLY

7.01 The grounding wire assembly prevents the customers from being exposed to electrical shock from defective current-carrying ventilator, blower, or coin collector mounted in a booth.

7.02 The P-12C414 grounding wire assembly consists of an insulated copper wire equipped with a station ground clamp at one end, a flanged-spade terminal 15 inches from the clamp end, and a second flanged-spade terminal at the other end (Fig. 7). The intermediate flange-spade terminal is provided for attachment to KS-8164 ventilator or KS-14125 blower.

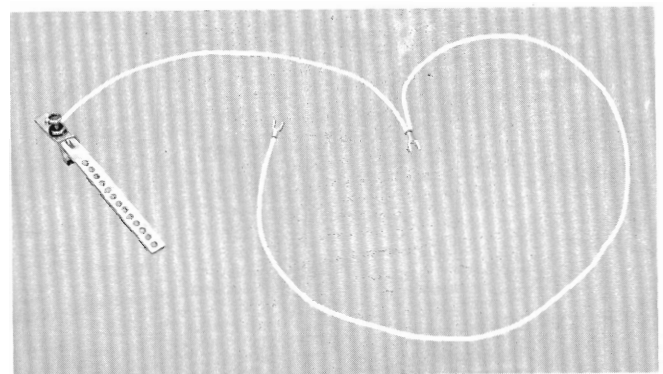
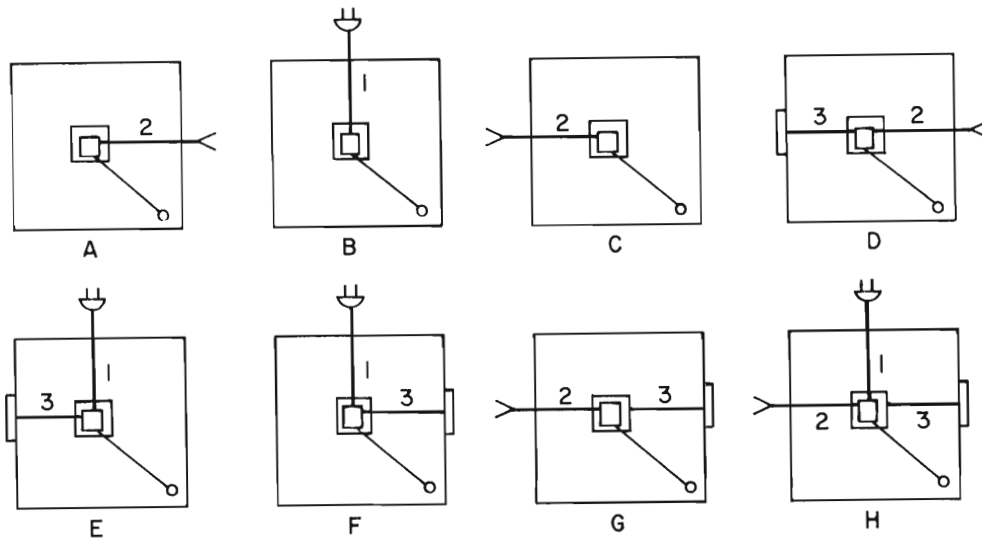


Fig. 7 — Grounding Wire Assembly

8.00 POWER CABLE ARRANGEMENTS THAT MAY BE ORDERED WITH BOOTHS



- A — Interconnecting cable 2 on right.
- B — Power cable 1.
- C — Interconnecting cable 2 on left.
- D — Interconnecting cable 2 on right, directory light and cable 3 on left.
- E — Power cable 1 with directory light and cable 3 on left.
- F — Power cable 1 with directory light and cable 3 on right.
- G — Interconnecting cable 2 on left, directory light and cable 3 on right.
- H — Power cable 1 interconnecting cable 2 on left, directory light and cable 3 on right.

Fig. 8 — Diagrams of Power Cables for Booths