

**CIVIL DEFENSE WARNING SYSTEM**  
**(CDW)**  
**BELL AND LIGHTS**  
**STATION EQUIPMENT—CONNECTIONS**

**1. GENERAL**

**1.01** This section shows how to connect station equipment at civil defense control points and warning stations.

**1.02** This section is reissued to:

- Revise Part 2
- Revise Fig. 1
- Change subscriber set 531A-3 (MD) to 687A-49 in, Fig. 2
- Revise 4.01 and 4.03.



*Because of the important function of the CDW system, no work of any kind shall be done on the apparatus and equipment described in this section without proper authorization.*

**2. 7F-3 DIAL**

**2.01** Fig. 1 shows the method of terminating inside wire on the 7F-3 dial.

**Note:** The 7F-3 dial is made from a modified 7C or 7D dial.

**3. STATION SIGNAL INDICATOR**

**3.01** Connections for audible and visual signals are shown in Fig. 2.



*No rewiring of the station signal indicator is ever required. Restrictions on warning signals to be received at warning stations are controlled at the central office.*

**3.02** Provide a signaling ground wire between each station indicator and the connecting block, protector, cable terminal, or other grounding point (except as indicated in 3.04).

**3.03** Tag signaling ground wire at the station signal indicator to give location of the ground connection.

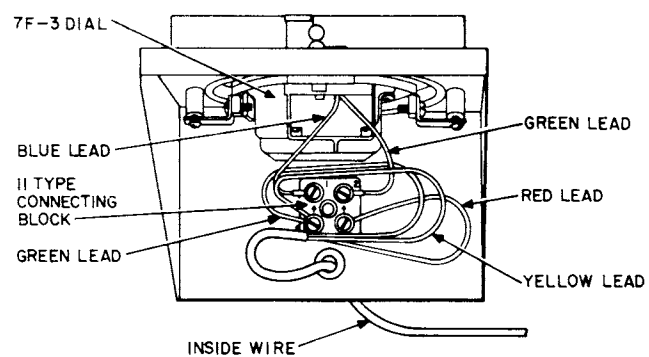
**3.04** Where the station signal indicator is controlled by a single-line or 5-line capacity unit at the central office, two cable pairs are assigned, one pair being used as a single conductor. In such cases, local signaling ground is not required.

**4. PUBLIC SIGNAL CONTROL CIRCUIT (SIRENS)**

**4.01** The KS-16626, L13 power relay set connects to a line shown in Fig. 3.

**4.02** Do not use the KS-16626, L1 power relay set since false signals may result due to the breakdown of the capacitor used in this set.

**4.03** At stations where the line is to be placed under continuous test, connect a KS-8512, L6A resistor across the line (Fig. 3). Insulate exposed leads of the resistor with tape or tubular insulation.



**Fig. 1—Terminating Inside Wire**

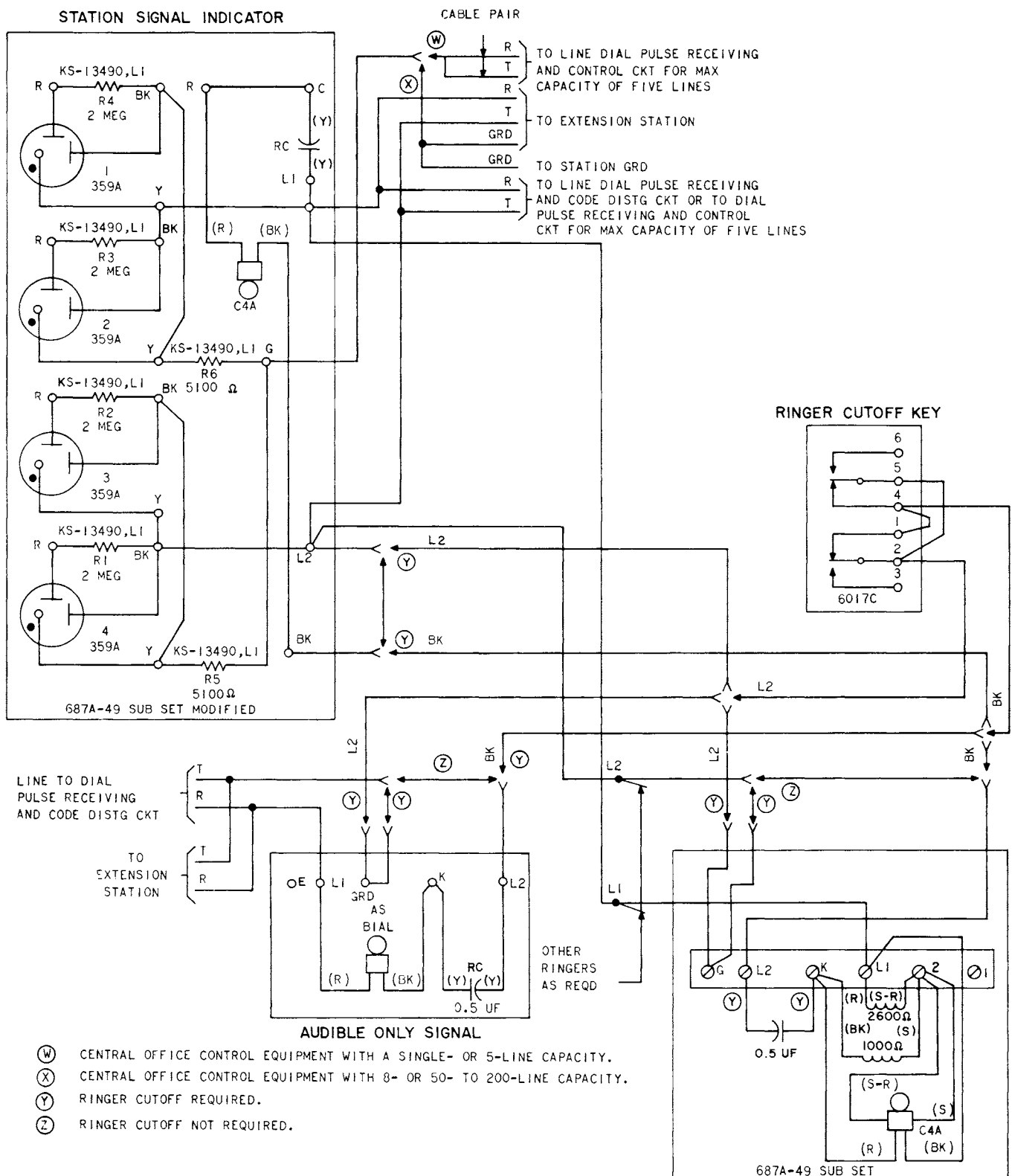
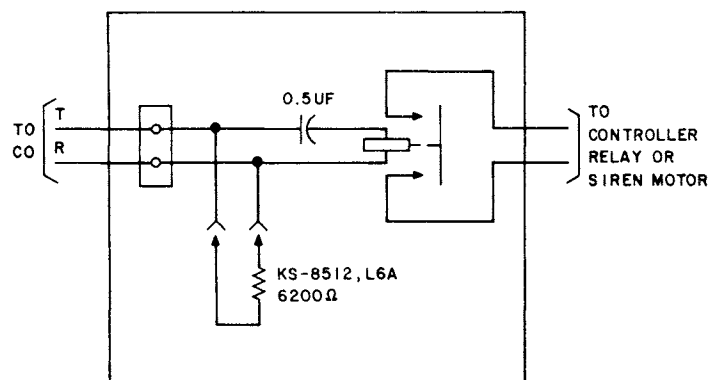


Fig. 2—Civil Defense Warning System, Connection



**Fig. 3—Modification of KS-16626,L13 Power Relay Set**