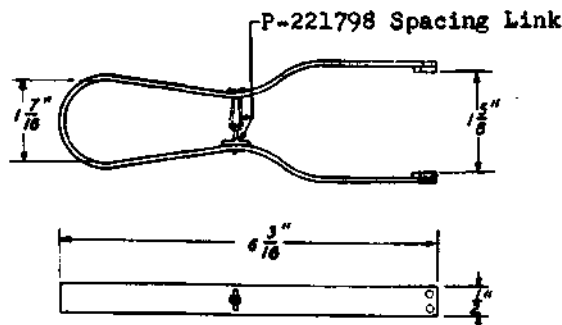


# CODED TOOLS NO. 87 TO 130 DESCRIPTION

TOOL, 87 Manufacture Discontinued.  
Replaced by the No. 319B tool.

TOOL, 90



Cap remover.

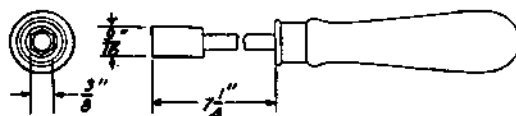
For use on 5, 12 and 14 type line and traf-  
fic registers.

TOOL, 91 Manufacture Discontinued.

TOOL, 92 Manufacture Discontinued.  
Replaced by the No. 276 tool.

TOOL, 93 Manufacture Discontinued.  
Replaced by the Nos. 410A and 410B tools.

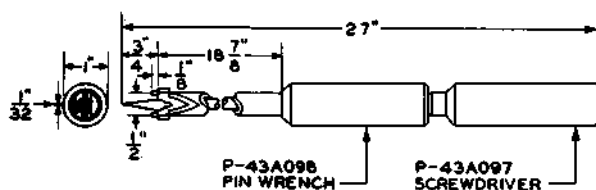
TOOL, 102



3/8" Hex. single end socket wrench.

For general use.

→ TOOL, 103



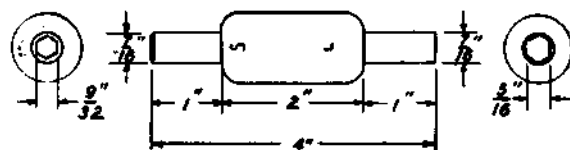
Combination pinwrench and screwdriver.

For use on power driven rotary selectors  
and 16 type jack fasteners.

TOOL, 105 Manufacture Discontinued.  
Replaced by the No. 303 tool.

TOOL, 109 Manufacture Discontinued.  
Replaced by Screwdriver, Cord Repair, per  
KS-2348

TOOL, 110



9/32" and 5/16" Hex. double end socket  
wrench.

For use on duplex motors.

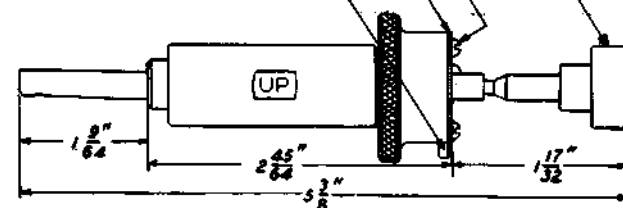
TOOL, 111

P-108215 Button

P-108221 R.H.M. Screw

P-108216 Cover

P-108224 Pawl



Jack spring cleaner. This tool has a rough-  
ened steel ribbon which can be inserted  
between the jack contacts without crossing  
the springs or sleeve.

For use on 122 type jacks.

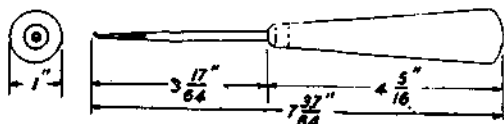
TOOL, 112 Manufacture Discontinued.  
Replaced by the No. 319B tool.

TOOL, 113      Manufacture Discontinued.  
Replaced by the No. 113B tool.

TOOL, 113B      Manufacture Discontinued.  
Replaced by the No. 490A tool.

TOOL, 116      Manufacture Discontinued.  
Replaced by the No. 553A tool.

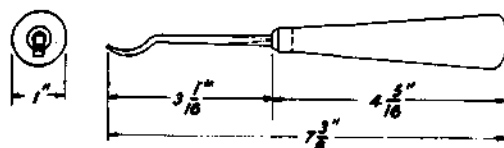
TOOL, 117



Jack tip and ring spring adjuster.

For use on 49, 92 and 292 type jacks.

TOOL, 118

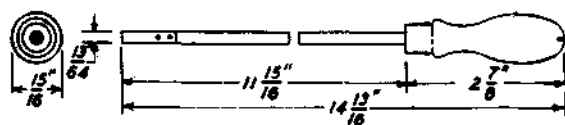


Jack ring spring adjuster.

**For use on 92 and 292 type jacks.**

TOOL, 123 Manufacture Discontinued  
Replaced by the No. 407A tool.

TOOL, 124

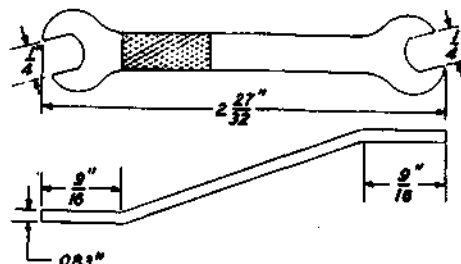


Sleeve terminal locking tool.

For use on 49 type jacks to twist the sleeve terminal to lock the sleeve in position.

TOOL, 125      Manufacture Discontinued.  
Replaced by the No. 319B tool.

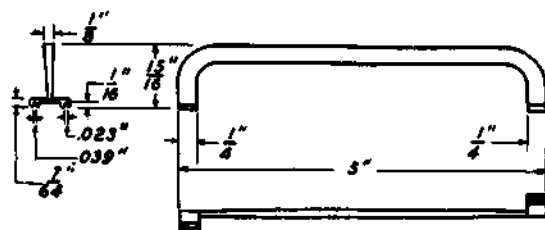
TOOL, 129B



1/4" Hex. open double end offset wrench.

For use on ringers and transmission twist controller.

TOOL, 130



Spring adjuster.

For use on round type relays.