

INSTALLATION OF 8A BUZZER 550C, 551 AND 552 TYPE P.B.X.'s

1. GENERAL

1.01 This section outlines the procedure for installing the 8A adjustable volume A-C. buzzers on 550C, 551A, 551B and 552 type P.B.X. switchboards.

1.02 The installation of this buzzer on existing switchboards is only suitable for use where A-C. source of supply is available and should generally be limited to those cases where repeated visits are required for the purpose of making buzzer tone adjustments.

1.03 The 8A buzzer, which is arranged to permit the P.B.X. attendant to regulate the volume of the tone, is equipped with an adjusting knob for regulation purposes and is mounted in such a manner that the knob projects from the switchboard in a location convenient for its operation. The existing buzzer control ON and OFF Key should be retained as the 8A volume control knob is not equipped with a cut-out switch for this purpose.

1.04 Reference should be made to Section 028-113-701 for the adjustment requirements and maintenance of 8 type buzzers.

2. TOOLS

- 2.01 The tools required for adjustment of the 8A buzzer are listed in B438.008.
- 2.02 No. 6 (6/16") Auger Bit, for cutting 3/8" hole through wood facing.
- 2.03 3/8" x 5-7/8" Morse 390 Bit Stock Twist Drill, for cutting 3/8" hole through fiber facing.

3. INSTALLATION

3.01 As shown in Figs. 1 to 4, inclusive, the location of the 3/8" hole for the buzzer shaft and the position for mounting the 8A buzzer is indicated for each of the various P.B.X.'s.

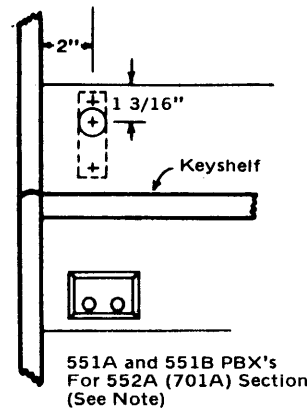


Fig. 1

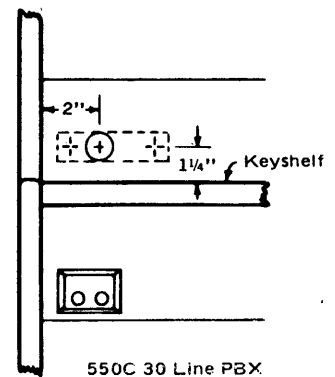


Fig. 2

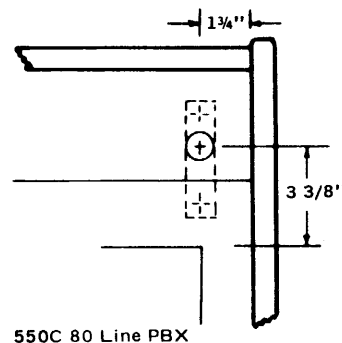


Fig. 3

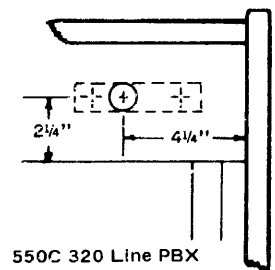


Fig. 4

Note: Same dimensions apply except that 8A buzzer is located at right hand end of face plate.

3.02 The present leads of the existing 4 type buzzer may be extended to the location of the replacing buzzer or the old leads may be cut "dead" in the form and new leads superimposed on the local cable may be run for connection of the new buzzer.

3.03 At very quiet locations a special mounting arrangement can be employed to eliminate the sounding board effect of the surface upon which the buzzer is mounted. This consists of re-drilling the mounting holes in the frame of the buzzer with a 3/8" drill and mounting the buzzer on rubber grommets such as those used to support

the ringer mounting in combined sets. In this case it is, of course, necessary to make sure that the grommets separate the buzzer frame from the mounting surface and from the mounting screws and that the volume control knob and its shaft do not touch the board.

3.04 A 2B apparatus blank may be used where the switchboard is drilled for but not equipped with an 8A buzzer.

3.05 For special applications the buzzer may be mounted on a vertical surface with the adjusting knob toward the top. Two .138"-32 tapped holes are provided and two 5/16" No. 6-32 RH machine screws are furnished for this purpose.

4. DRAWINGS

4.01 The following is a list of equipment and apparatus drawings for reference purposes:

550C	30 line P.B.X.	ES-296929
550C	80 line P.B.X.	ES-296930
550C	320 line P.B.X.	ES-296934
*550C	P.B.X.	SD-66123-01
551A	P.B.X.	ED-65067-01
551B	P.B.X.	ED-65066-01
*551A and B	P.B.X.	SD-66183-01
552A (701A)	P.B.X.	ED-65327-01

*Revised auxiliary signal circuit drawings including the 8A buzzer and 4C foot switch.