

**BSRS- 353.261**

## Replacing

BSP D353.261

## STATION PLUGS

## 274 AND 283 TYPE

Page 1

CORDING

This index lists the information that forms a part of, or supplements this specification; and indicates the authorized issues thereof. In cases where the BSRS Supplementary Specifications have not been issued, the D Series of Bell System Practices of the same number shall be used.

[illegible]

c - Information in accordance with that currently authorized.

**E-7551 (7-53)**



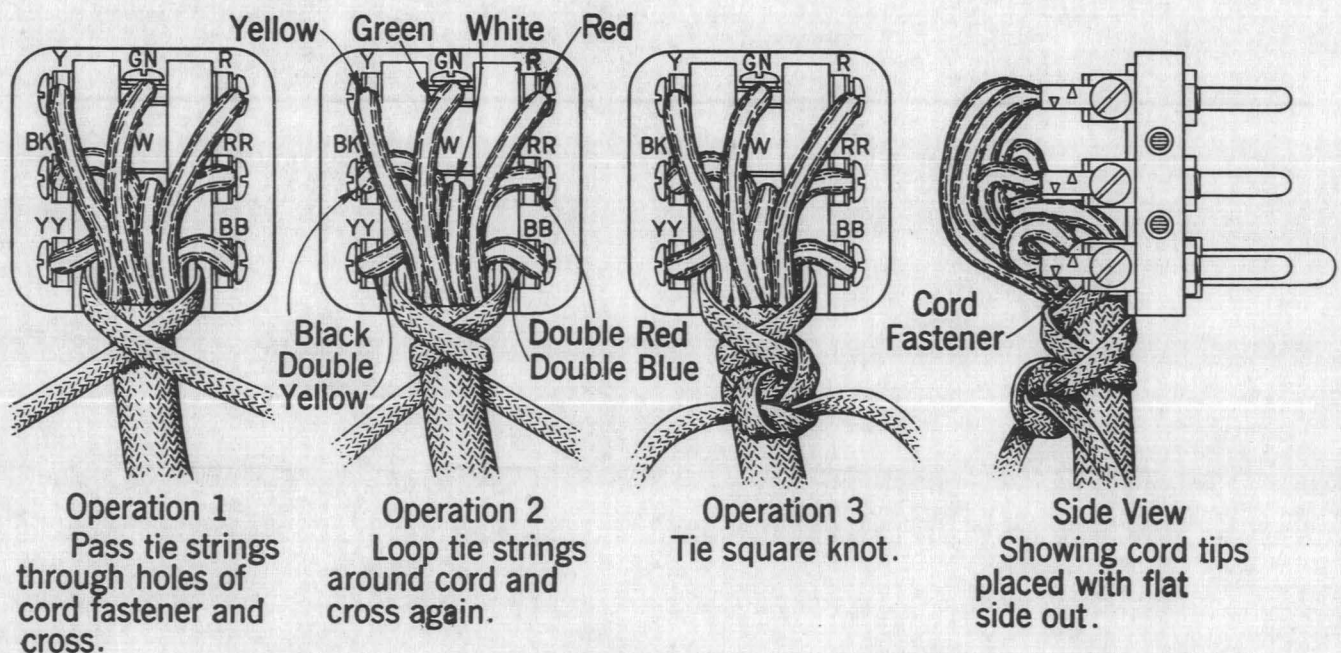
## 1. GENERAL

- 1.01 This section covers the cording of plugs of the types used in connection with portable station telephone sets, etc.
- 1.02 When connecting cords to plugs, connections shall be made as indicated by the color designations located adjacent to the terminals of the plugs except when a 283-type plug is used in connection with a 304-type telephone set. See 2.01.

## 2. CORDING

- 2.01 Cording of plugs used in connection with portable station telephone sets shall be as shown in the figures below with the following exception. When a 283-type plug is used in connection with a 304-type telephone set, the three conductors of the telephone set mounting cord shall be corded as follows: Red and yellow conductors positioned as shown on B-900264, green conductor positioned as shown for the black conductor on B-900264.
- 2.02 When cords are assembled per B-900264 View "A", one wing of wingband shall be inserted in the small hole in plug base and the other wing in slot in plug cover. The stay cord hook self-tapping screw shall be omitted.
- 2.03 When cords are assembled per B-900264 View "B", the stay cord hook shall be fastened to plug base with the self-tapping screw.
- 2.04 The cord tips shall be bent sufficiently to avoid contact with cover of plug and assemble per B-900264 View "C".
- 2.05 Cords such as D8J and M8C shall be assembled to the base of the 274-type plug as shown on BL-209422.





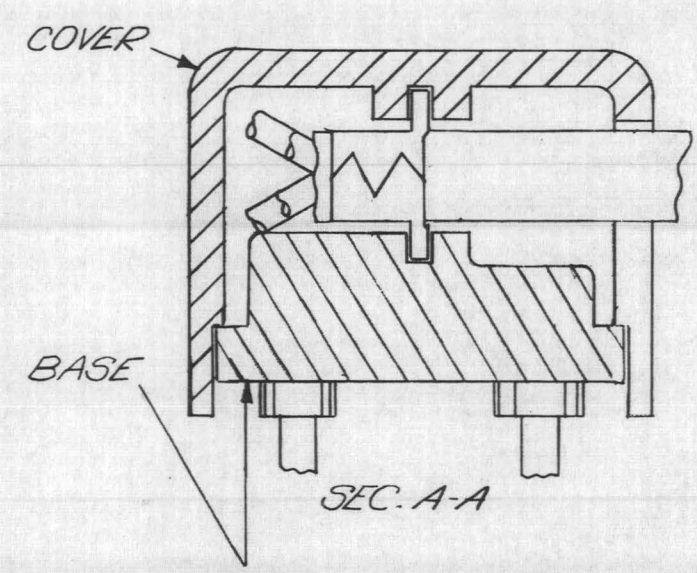
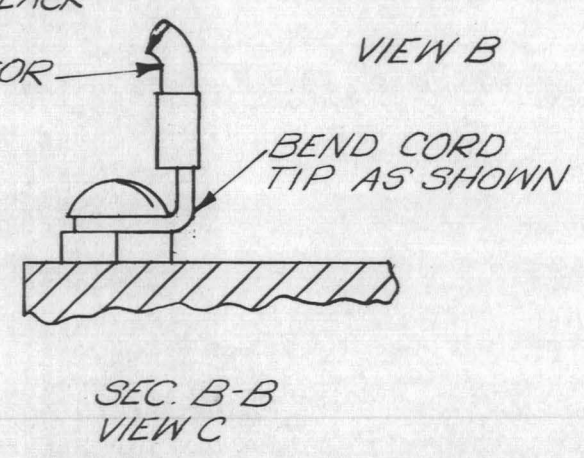
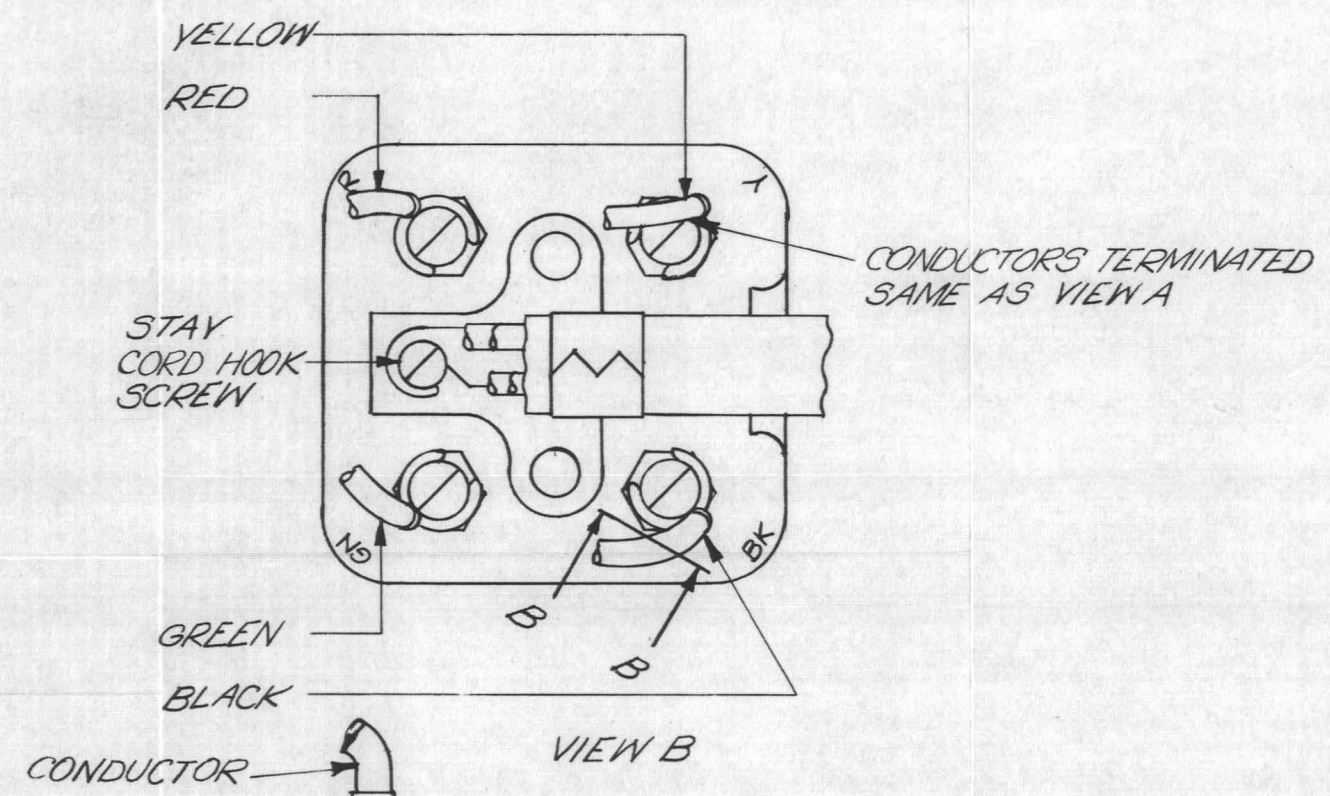
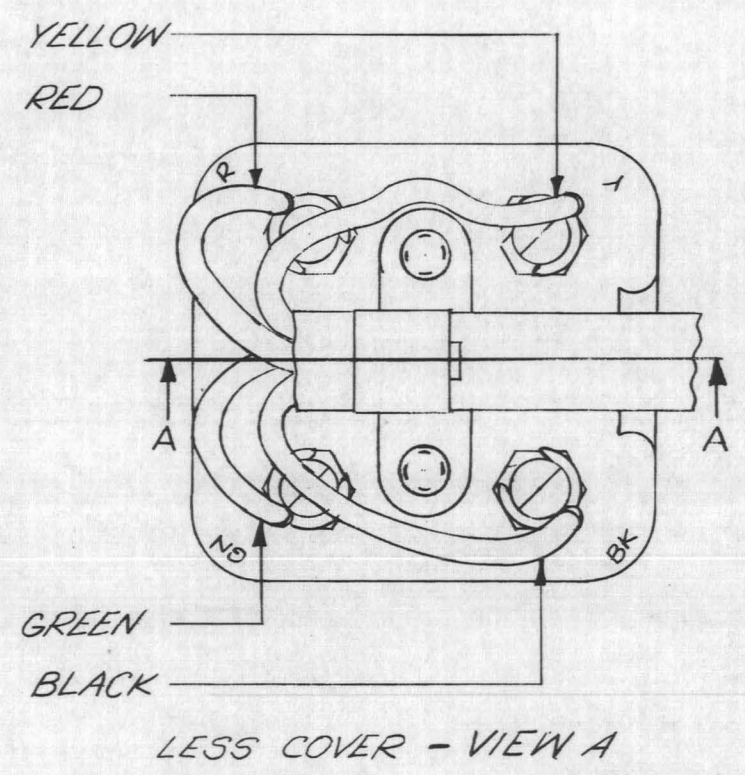
# CORDING CONNECTIONS FOR 274 TYPE PLUG

BL-209422  
 ISSUE 2 2/3/47  
 ISSUE 3 11/5/53





|       |               |         |     |
|-------|---------------|---------|-----|
| ENGR  | J.S. CLARK    |         |     |
| DRAWN | V.G. LUCCHESI |         | JSC |
| ISSUE | 1             | 9-17-53 | NAK |



CORDING  
CONNECTIONS  
FOR 283 TYPE  
PLUG

SCALE ~

WESTERN ELECTRIC CO., INC  
ENGINEER OF MANUFACTURE  
CENTRAL OFFICE EQUIPMENT

BELL TELEPHONE  
LABORATORIES, INC

| MATERIAL   | FINISH |
|--|--------|
| DIMENSIONS UP TO AND INCLUDING 72 INCHES EXPRESSED IN INCHES.<br>NON-LIMITED DIMENSIONS, OTHER THAN SIZE OF RAW MATERIAL, SHALL<br>BE HELD WITHIN FRACTIONAL DECIMAL |        |
| DWG SIZE<br>2S   |        |

B-900264