

TELEPHONE SETS — 440, 460 TYPES

IDENTIFICATION AND ASSEMBLY OF PARTS

1.00 GENERAL

1.01 440- and 460-type telephones are 4- and 6-button key telephone sets used on multiline installations, and with 1A and 1A1 key telephone systems.

1.02 The handsets, dials, and ringers, etc, which are common to other station telephone sets, are covered in the sections dealing with these various apparatus items.

2.00 IDENTIFICATION

2.01 440- and 460-type telephone sets may be identified by their numerals. For example: in the 441-type set the first figure (4) indicates 400 Series, the second figure (4) indicates the number of buttons, and the third figure (1) indicates a nonilluminated set with exclusion key. The third figure of the code is the key to the desired feature. For example, 440 is a nonilluminated set, 441 is a nonilluminated set with exclusion key, 444 is an illuminated set, and 445 is an illuminated set with exclusion key.

2.02 All 440- and 460-type sets are similar in outward appearance. Various features are obtained by different type keys and methods of connections for the various coded sets.

2.03 Early type nonilluminated sets were equipped with black buttons. As these sets are returned from the field and pass through Western Electric Company repair shops, they are equipped with clear plastic buttons if specified by the telephone company. Therefore, sets with clear plastic buttons may be nonilluminated. Refer to Table A for complete list of sets.

2.04 440-type telephone sets are 4-button key sets arranged for hold, pickup, signal, or cutoff. Variations of the above features may be obtained to meet the customer's requirements.

2.05 441-type telephone sets are 4-button sets arranged for hold, pickup, and exclusion. The exclusion key (right-hand plunger) is added in the switchhook section of the mounting. This key when operated (pulled up) permits the user to exclude other stations which have access to the same line. It is automatically restored to normal when the handset is returned to on-hook position. This prevents station from being excluded from the line following the termination of a private conversation. Sets with the exclusion feature are wired at the factory for exclusion on the first line but may be moved to other lines by the installer if required.

TABLE A
COMPLETE LIST OF SETS

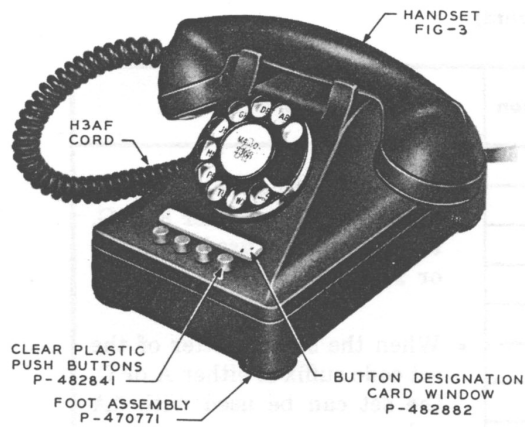
Code		Features	Exclusion	Remarks
Manual	Dial			
440AA	440AC	PPPP		<ul style="list-style-type: none"> When the second letter of the set code suffix is either E or G, the set can be used with 1A or 1A1.
440BA	440BC	PPPS		
440EA	440EC	HPPP		
440EE	440EG	HPPP		
440FA	440FC	HPPS		<ul style="list-style-type: none"> When the second letter of the set code suffix is either A or C, the set can be used with 1A only.
440FE	440FG	HPPS		
440GA	440GC	HPPC		
440GE	440GG	HPPC		
441EA	441EC	HPPP	X	<ul style="list-style-type: none"> Features H = Hold (nonlocking) P = Pickup (locking) S = Signal (nonlocking) C = Cutoff (turn button)
444AA	444AC	PPPP		
444EA	444EC	HPPP		
444EE	444EG	HPPP		
444FA	444FC	HPPS		<ul style="list-style-type: none"> All sets in this section are manufacture discontinued.
444FE	444FG	HPPS		
445AA	445AC	PPPP	X	
445BA	445BC	PPPS	X	
445CA	445CC	PPPC	X	<ul style="list-style-type: none"> Cords See section entitled Station Cords.
445DA	445DC	PPSC	X	
445EA	445EC	HPPP	X	
445EE	445EG	HPPP	X	
445FA	445FC	HPPS	X	
445GA	445GC	HPPC	X	
460AA	460AC	PPPPPP		
460GA	460GC	HPPPPP		
460GE	460GG	HPPPPP		
460HA	460HC	HPPPPS		
460HE	460HG	HPPPPS		
460KA	460KC	HPPPPC		
460LA	460LC	HPPPSC		
460MA	460MC	HPPPSS		
460ME	460MG	HPPPSS		

TABLE A (contd)

Code		Features	Exclusion	Remarks
Manual	Dial			
461HA	461HC	HPPPPS	X	<ul style="list-style-type: none"> When the second letter of the set code suffix is either E or G, the set can be used with 1A or 1A1. When the second letter of the set code suffix is either A or C, the set can be used with 1A only. Features <ul style="list-style-type: none"> H = Hold (nonlocking) P = Pickup (locking) S = Signal (nonlocking) C = Cutoff (turn button) All sets in this section are manufacture discontinued. Cords <ul style="list-style-type: none"> See section entitled Station Cords.
462AC*		HPPPPL*		
	462BC†	HPPPPL		
464GA	464GC	HPPPPP		
464GE	464GG	HPPPPP		
464HA	464HC	HPPPPS		
464HE	464HG	HPPPPS		
464MA	464MC	HPPPSS		
464ME	464MG	HPPPSS		
465GA	465GC	HPPPPP	X	
465GE	465GG	HPPPPP	X	
465HA	465HC	HPPPPS	X	
465HE	465HG	HPPPPS	X	
465JA	465JC	HPPPPS	X	
465KA	465KC	HPPPPC	X	
465KE	465KG	HPPPPC	X	
465LA	465LC	HPPPSC	X	
465LE	465LG	HPPPSC	X	
465MA	465MC	HPPPSS	X	
465ME	465MG	HPPPSS	X	
465NA	465NC	HPPSSS	X	
465NE	465NG	HPPSSS	X	
	466AC*	HPPPPL		

* For use with the 755A PBX

† For use with the 750A PBX



2.06 444-type telephone sets are 4-button illuminated sets which can be arranged for pickup, signal, and hold (see Fig. 1 and 2). When illuminated, the buttons serve as line and busy lamps.

Fig. 1 — 444-type Telephone Set (External)

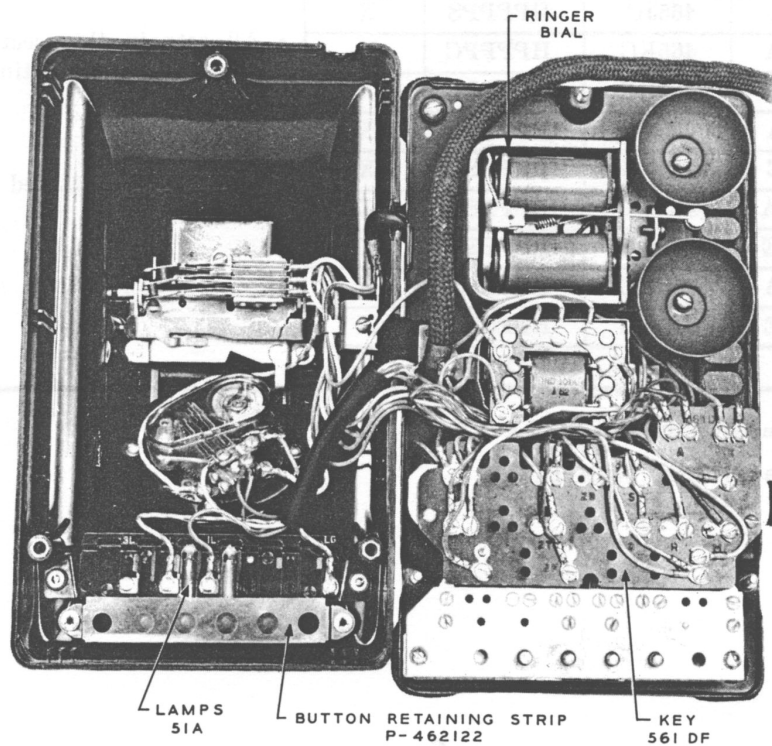


Fig. 2 — 444-type Telephone Set (Internal)

2.07 445-type telephone sets are 4-button illuminated key sets which can be arranged for exclusion, pickup, signal, and hold (see Fig. 3 and 4). In addition, certain codes are equipped with a cutoff key that is a turn-button type key which can be wired to any one line in the set. It is used for disconnecting an extension station or an extension ringer, or may be used to control the ringer in the set or to disconnect a listening-in set.

Fig. 3 — 445-type Telephone Set (External)

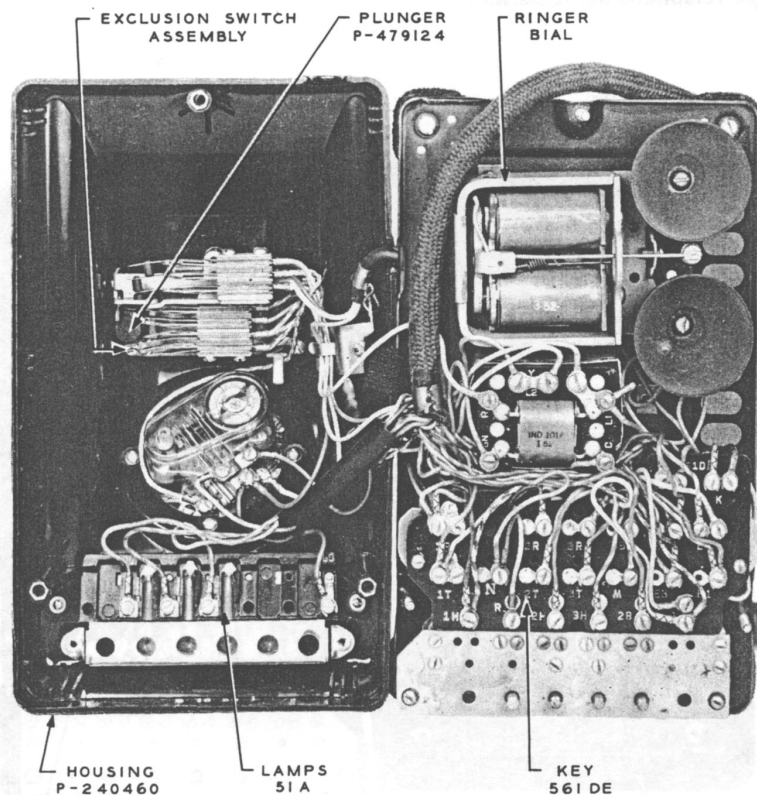
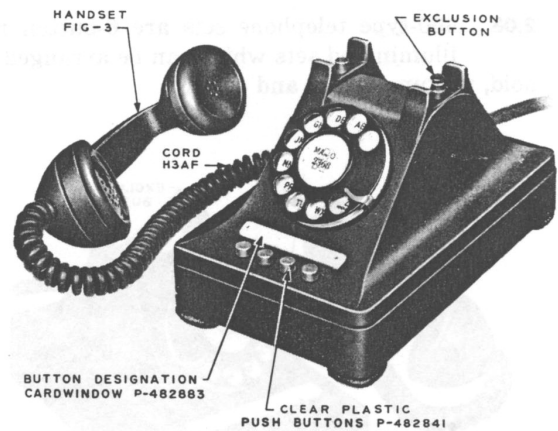


Fig. 4 — 445-type Telephone Set (Internal)

2.08 460-type telephone sets are 6-button non-illuminated sets which can be arranged for hold, pickup, signal, and cutoff.

2.09 461-type telephone sets are 6-button non-illuminated sets arranged for hold, pickup, signal, and exclusion.

2.10 464-type telephone sets are 6-button illuminated key sets which can be arranged for pickup, signal, and hold.

2.11 465-type telephone sets are 6-button illuminated key sets which can be arranged for hold, pickup, signal, cutoff, and exclusion (see Fig. 5 and 6).

2.12 440- and 460-type sets are arranged for, but not equipped with, 61P filters. If a filter is required, refer to material catalog for proper code.

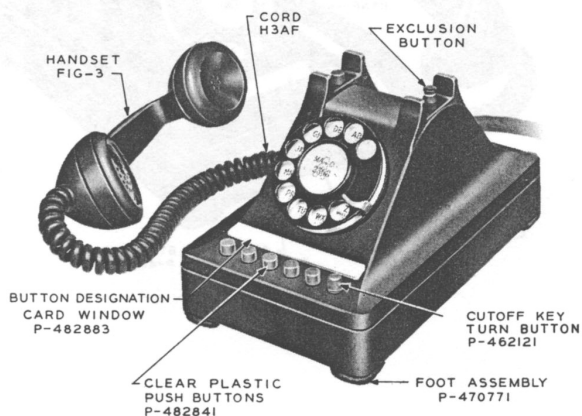


Fig. 5 — 465-type Telephone Set (External)

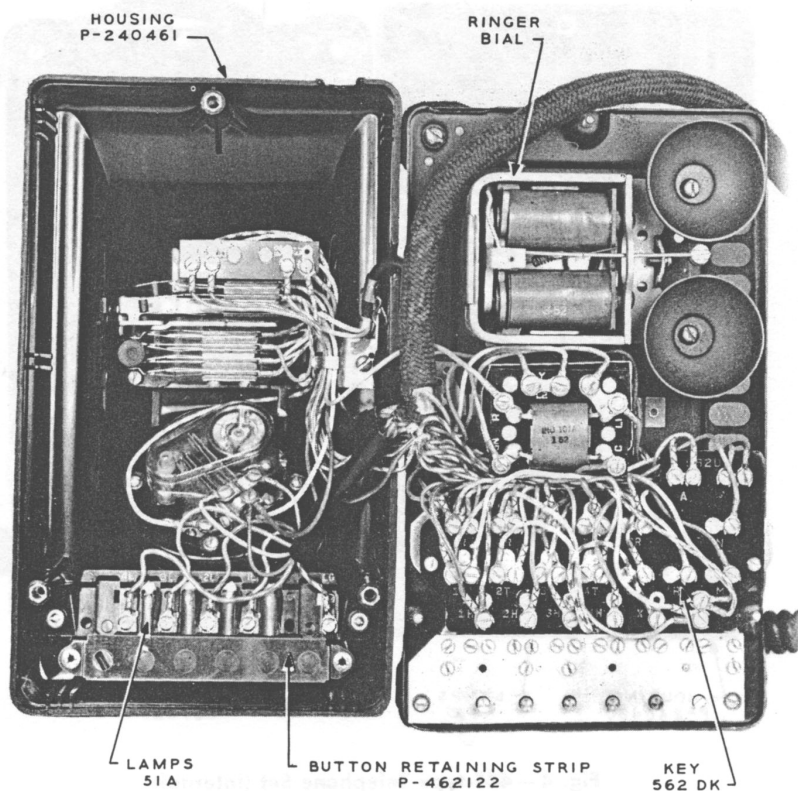


Fig. 6 — 465-type Telephone Set (Internal)

3.00 ASSEMBLY OF PARTS

3.01 Table B lists the commonly used piece parts.

3.02 Table C lists the parts that are common to both illuminated and nonilluminated sets.

TABLE B
COMMONLY USED PIECE PARTS

Item	No.
Push Button	P-482841
Turn Button	P-462121
Card Window, 4-Button Set	P-482882
Card Window, 6-Button Set	P-482883
Foot Assembly	P-470771
Eyelet	P-482846

3.03 When specified by the telephone company, sets having codes ending with A or C will be converted in the Western Electric Company repair shop to sets having codes ending with E/G. This conversion changes the key and switch assembly and makes the sets available for 1A or 1A1 installations. Converted sets will be dial equipped, and manual sets will be obtained by replacing the dial with apparatus blanks and making certain connection changes.

3.04 The 51A lamp is held in place between the spring contact members of the lamp mounting. When a lamp is replaced, it should be slipped as near as possible toward its associated buttons to obtain maximum illumination.

TABLE C

**PARTS COMMON TO ILLUMINATED
AND NONILLUMINATED SETS**

Part	Code
Handset	F1G-3
Dial	6A or 5H
Dial Adapter*	59A
Apparatus Blank	94A-3 or 82A-3
Induction Coil	101A
Filter† (optional)	61P or 61L

Notes

* New style 59A dial adapters are required for use with 6-type dials. Either new or old style adapters may be used with 5-type dials. New style adapters have a segment omitted from the circular outline.

† 61P filter used with 6-type dials.

3.05 Fig. 7 and 8 show views of the 561- and 562-type keys. This key assembly is secured to the base of the set by two hexagonal head screws in the bottom of the set mounting.

3.06 The clear plastic designation card window is held in place by friction grip on the designation window pins when inserted in the two small holes in the housing. These pins also are designed to retain the designation card in place above the buttons. The designation card (Form E-2804) is available for use with 440- and 460-type sets. This form is printed in the 6-button set size but, when used with 4-button sets, is trimmed as needed to fit the window strip.

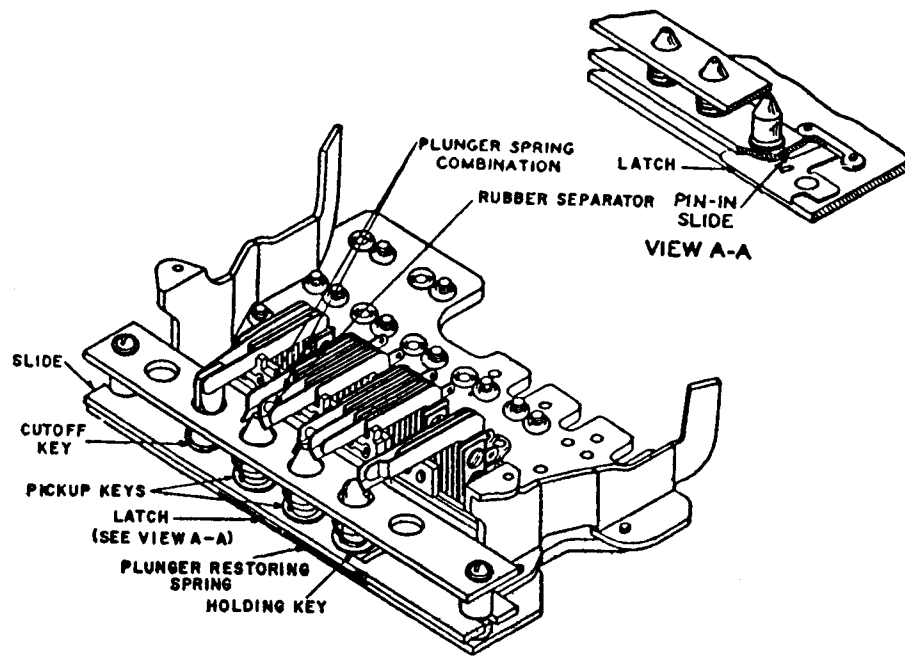


Fig. 7 — 561-type Key

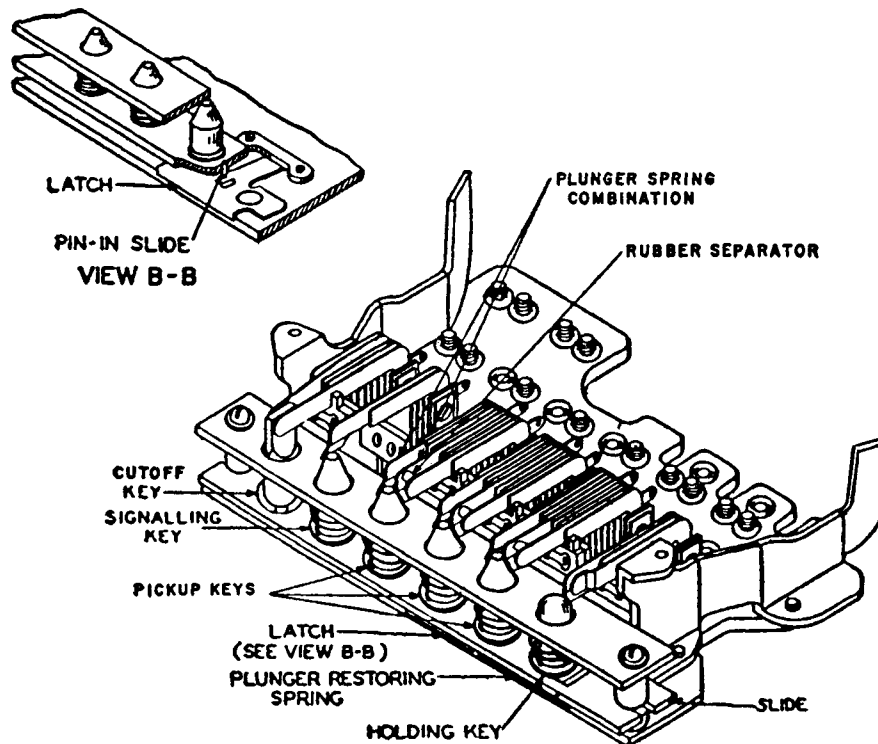


Fig. 8 — 562-type Key