

5A AND 5B KEY EQUIPMENTS CONNECTIONS

1.00 GENERAL

1.01 This section is reissued to:

- Include connection information for 106- and 107-type loudspeaker sets using 6017 AM and AN keys.
- Remove information on 200-type telephone sets.

1.02 The 100-type loudspeaker sets and associated keys 6017K and L are rated Mfr Disc. ↗

1.03 It is recommended that a 500-type telephone set be used with 5A or 5B key equipment on all installations. ↘

1.04 Connections for 5A and 5B key equipments are covered on the following circuit drawings.



For 106- or 107-type loudspeaker installations, use Fig. 1 or 2. ←

Fig.

Title

1 — 5A Key Equipment Arranged for One-Way Loudspeaker Conference Service, Connections to 500L or M Telephone Set or Equivalently Equipped Sets ↗

2 — 5B Key Equipment Arranged for One- or Two-Way Loudspeaker Conference Service, Connections to 500L or M Telephone Set or Equivalently Equipped Sets ↘

Fig.

Title

3 — 5A Key Equipment, Connections to 500C or D Telephone Set

4 — 5A Key Equipment, Connections to 440- or 460-Type Telephone Set Used with 1A or 1A1 Key Telephone System

5 — 5A Key Equipment, Connections to 540- or 560-Type Telephone Set Used with 1A or 1A1 Key Telephone System

6 — 5B Key Equipment, Connections to 500C or D Telephone Set

7 — 5B Key Equipment Using Alternate Circuit, Connections to 500C or D Telephone Set* ↗

8 — 5B Key Equipment, Connections to 440- or 460-Type Telephone Set Used with 1A or 1A1 Key Telephone System

9 — 5B Key Equipment Using Alternate Circuit, Connections to 440- or 460-Type Telephone Set* ↗

10 — 5B Key Equipment, Connections to 540- or 560-Type Telephone Set Used with 1A or 1A1 Key Telephone System

11 — 5B Key Equipment Using Alternate Circuit, Connections to 540- or 560-Type Telephone Set Used with 1A or 1A1 Key Telephone System* ↗

* In 5B key equipments where difference in gain between key positions is objectionable, alternate circuits may be installed as per Fig. 7, 9, and 11. ↘

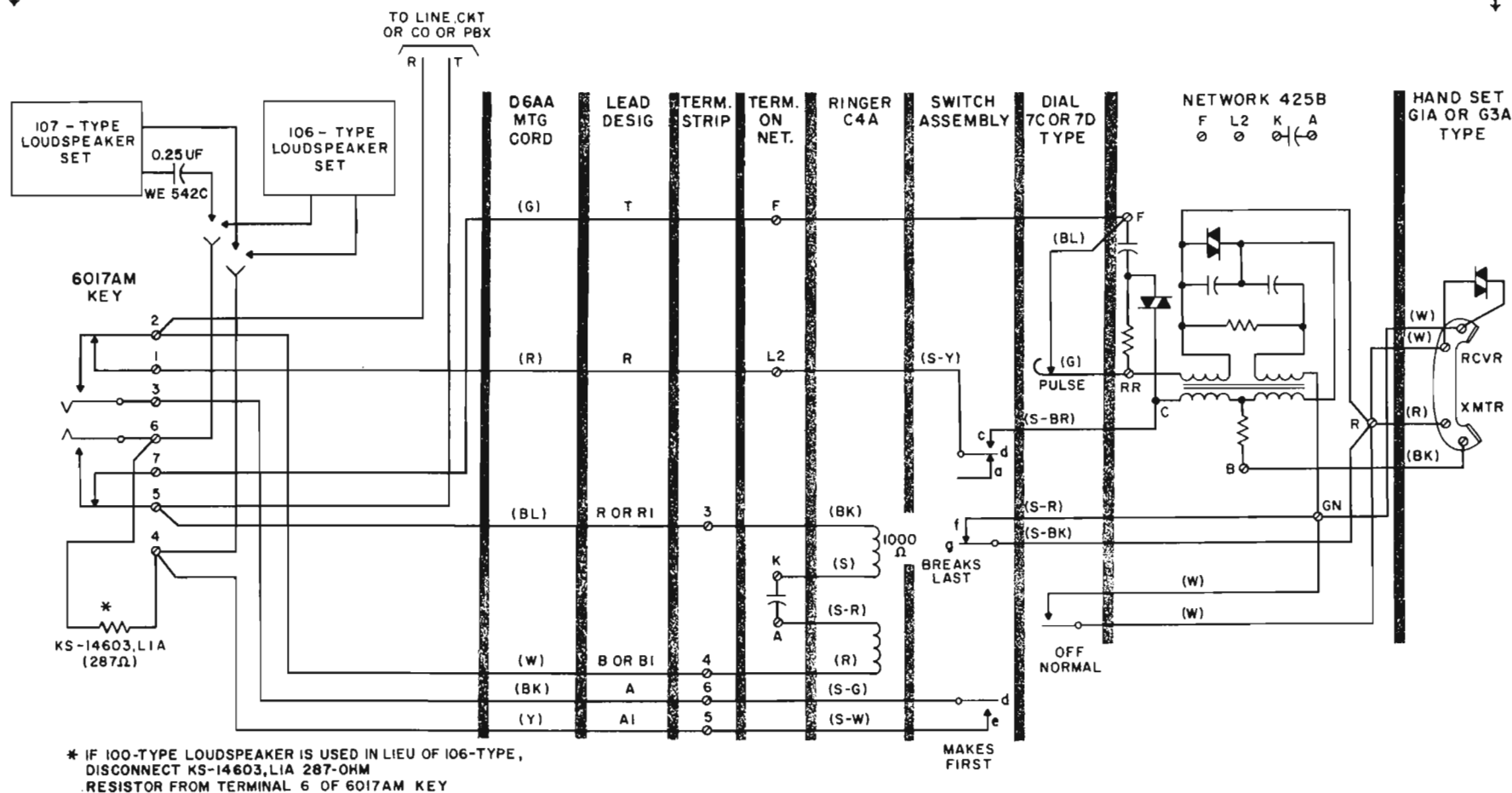


Fig. 1 — 5A Key Equipment Arranged for One-Way Loudspeaker Conference Service, Connections to 500L or M Telephone Set or Equivalently Equipped Sets

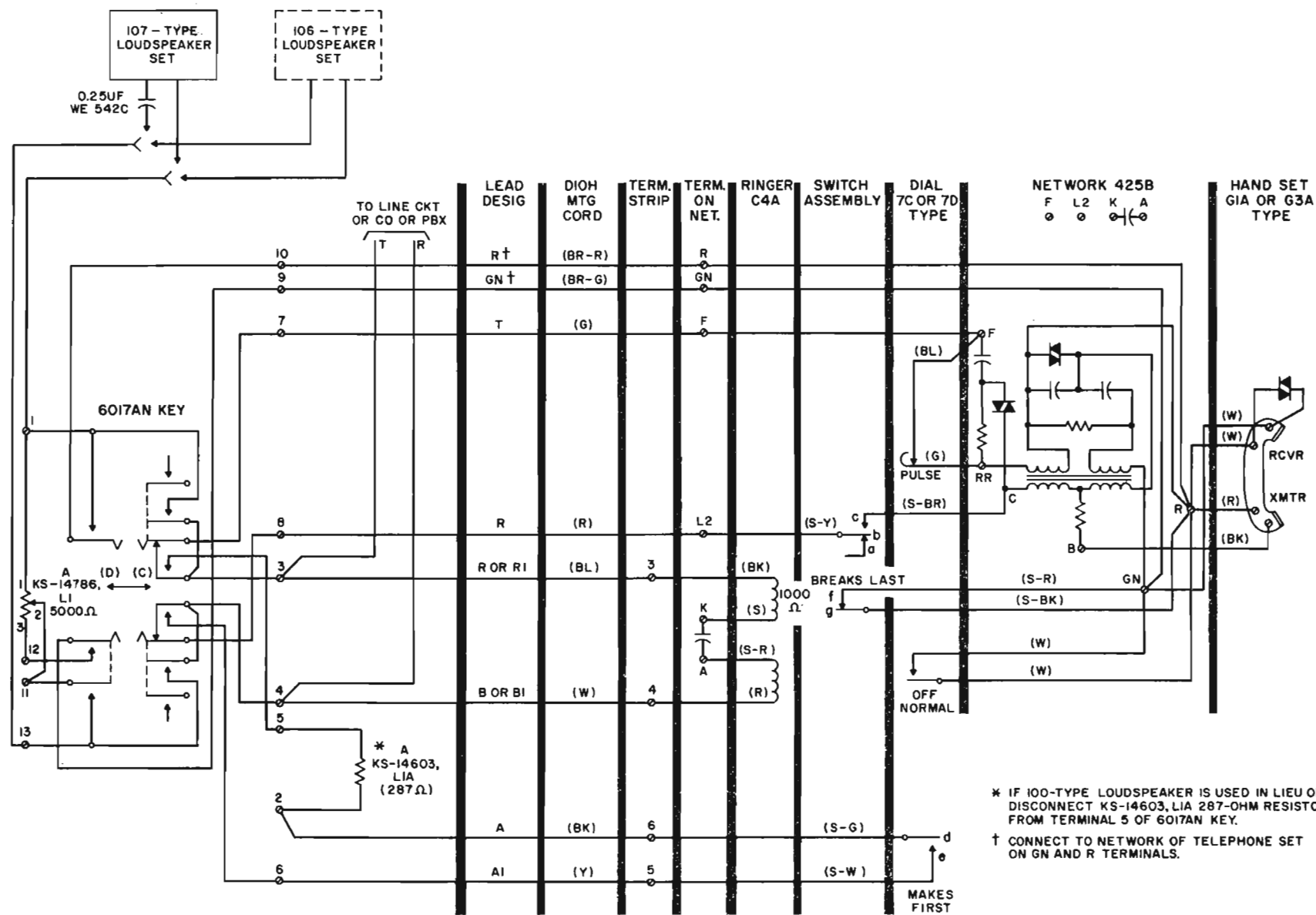


Fig. 2 — 5B Key Equipment Arranged for One- or Two-Way Loudspeaker Conference Service, Connections to 500L or M Telephone Set or Equivalently Equipped Sets

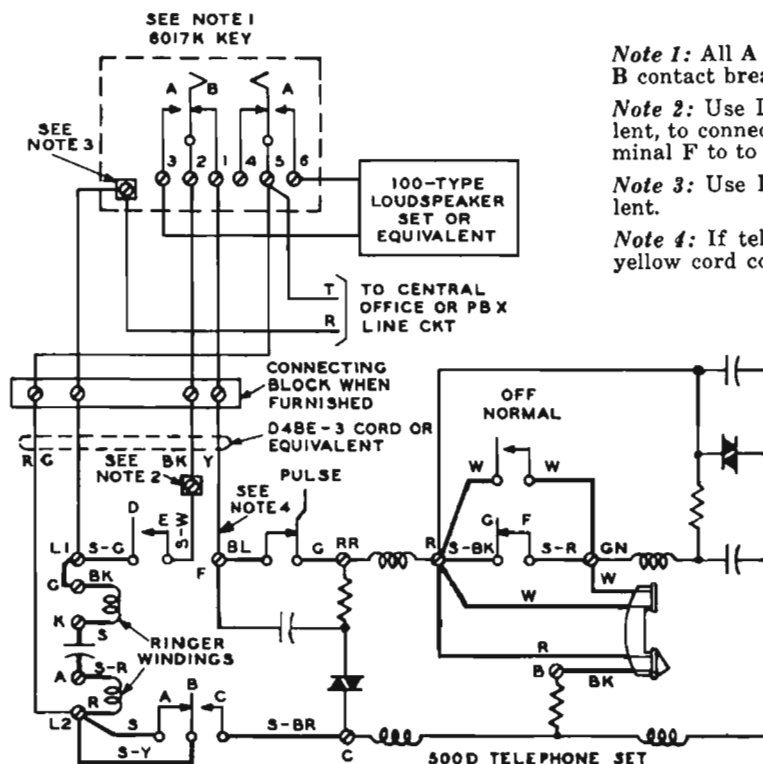


Fig. 3 - 5A Key Equipment, Connections to 500C or D Telephone Set

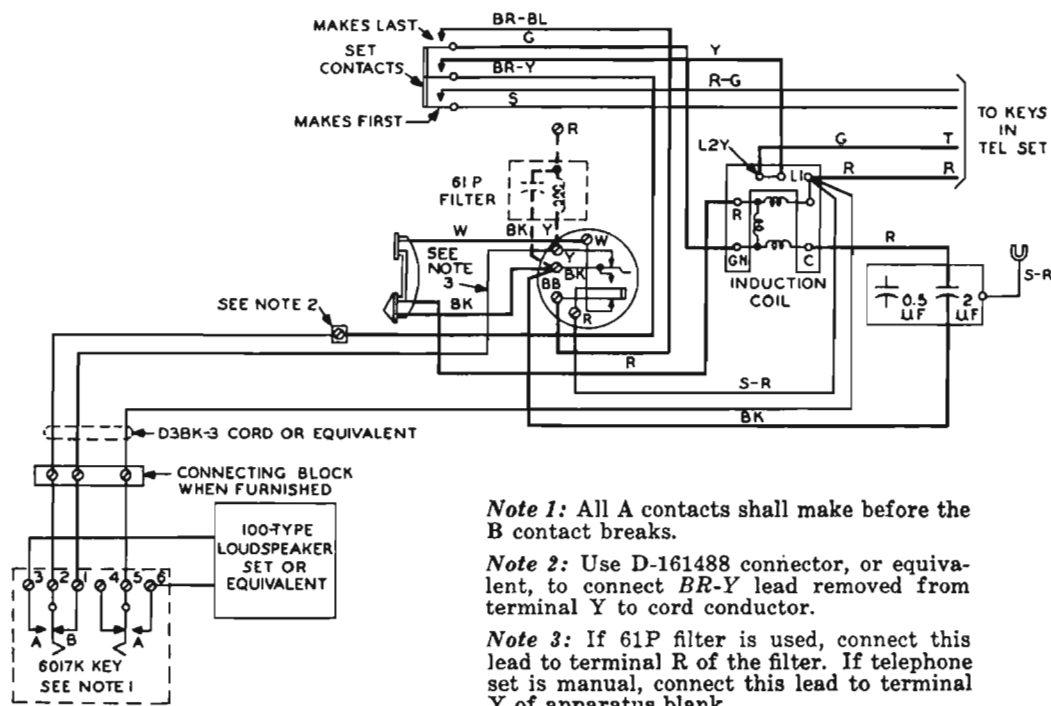


Fig. 4 - 5A Key Equipment, Connections to 440- or 460-Type Telephone Set Used with 1A or 1A1 Key Telephone System

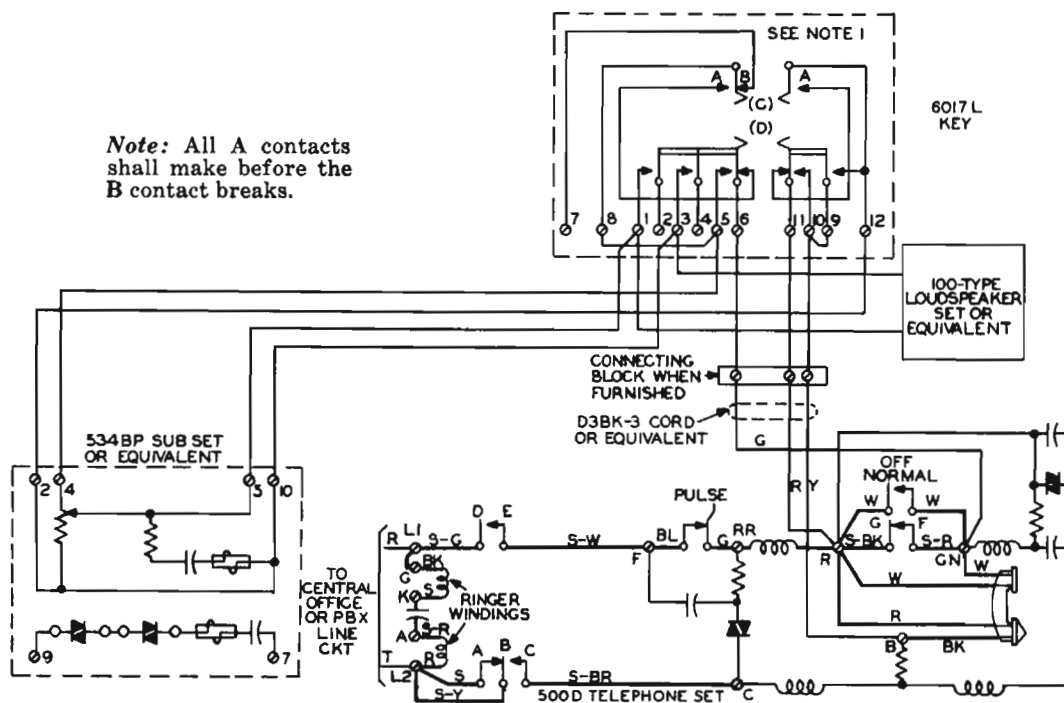
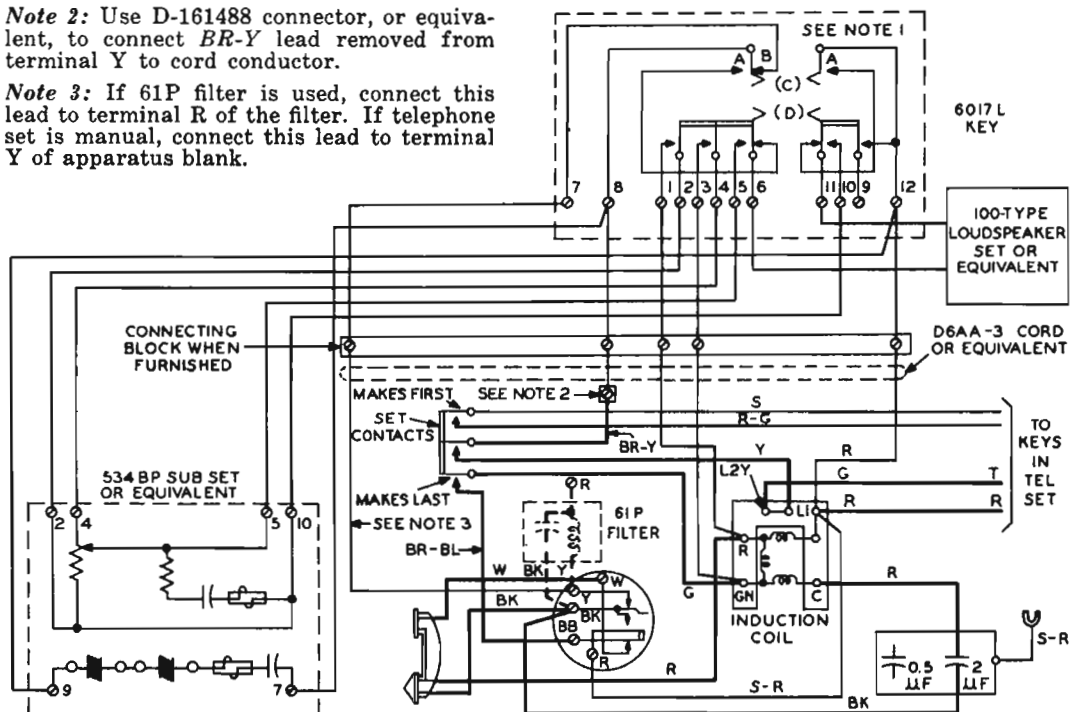


Fig. 7 — 5B Key Equipment Using Alternate Circuit, Connections to 500C or D Telephone Set

Note 1: All A contacts shall make before the B contact breaks.

Note 2: Use D-161488 connector, or equivalent, to connect BR-Y lead removed from terminal Y to cord conductor.

Note 3: If 61P filter is used, connect this lead to terminal R of the filter. If telephone set is manual, connect this lead to terminal Y of apparatus blank.



**Fig. 8 — 5B Key Equipment, Connections to 440- or 460-Type Telephone Set
Used with 1A or 1A1 Key Telephone System**

Note 1: All A contacts shall make before the B contact breaks.

Note 2: If telephone set is manual, connect this lead to terminal BK of apparatus blank.

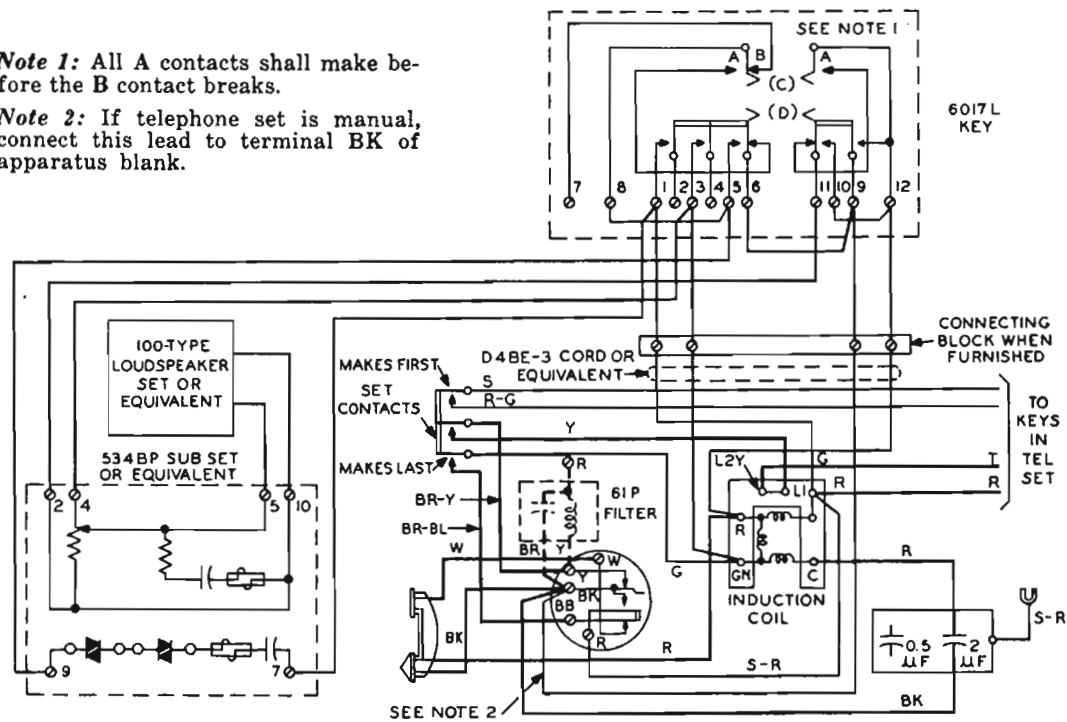


Fig. 9 - 5B Key Equipment Using Alternate Circuit, Connections to 440- or 460-Type Telephone Set

Note 1: All A contacts shall make before the B contact breaks.

Note 2: Use D-161488 connector, or equivalent, to connect S-BR lead removed from terminal C to cord conductor.

Note 3: Lead from terminal C may be cut or unsoldered. Use D-161488 connector, or equivalent, to connect cord conductor to terminal C lead.

Note 4: If telephone set is manual, connect this lead to terminal RR.

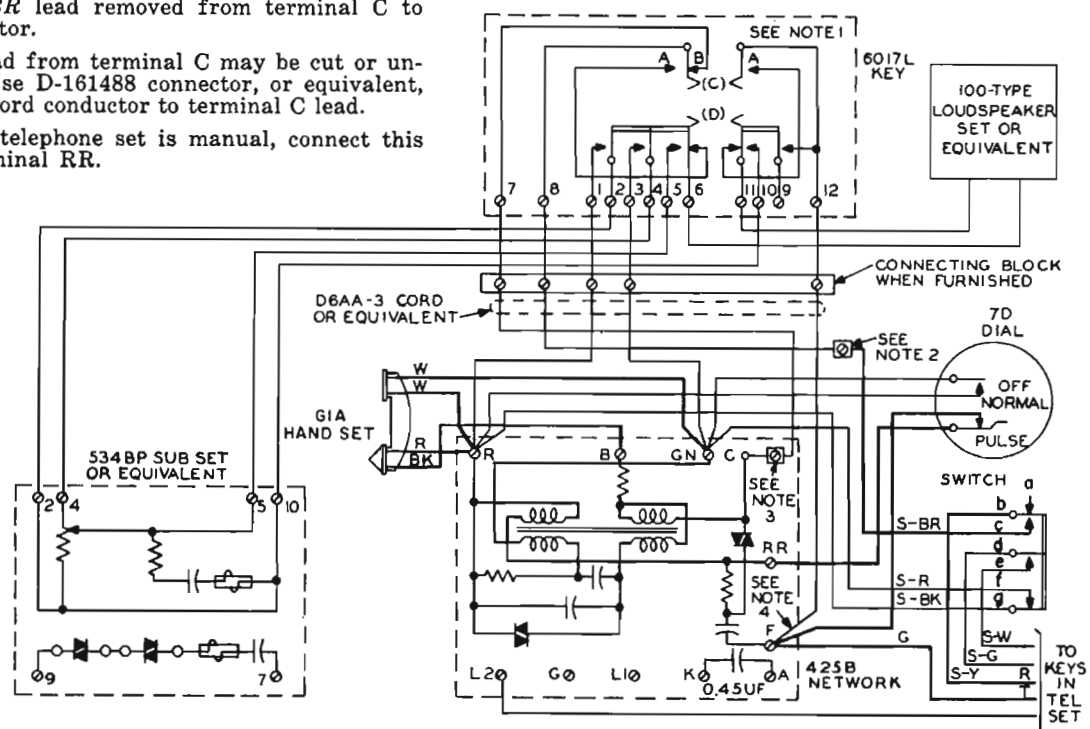


Fig. 10 - 5B Key Equipment, Connections to 540- or 560-Type Telephone Set Used with 1A or 1A1 Key Telephone System

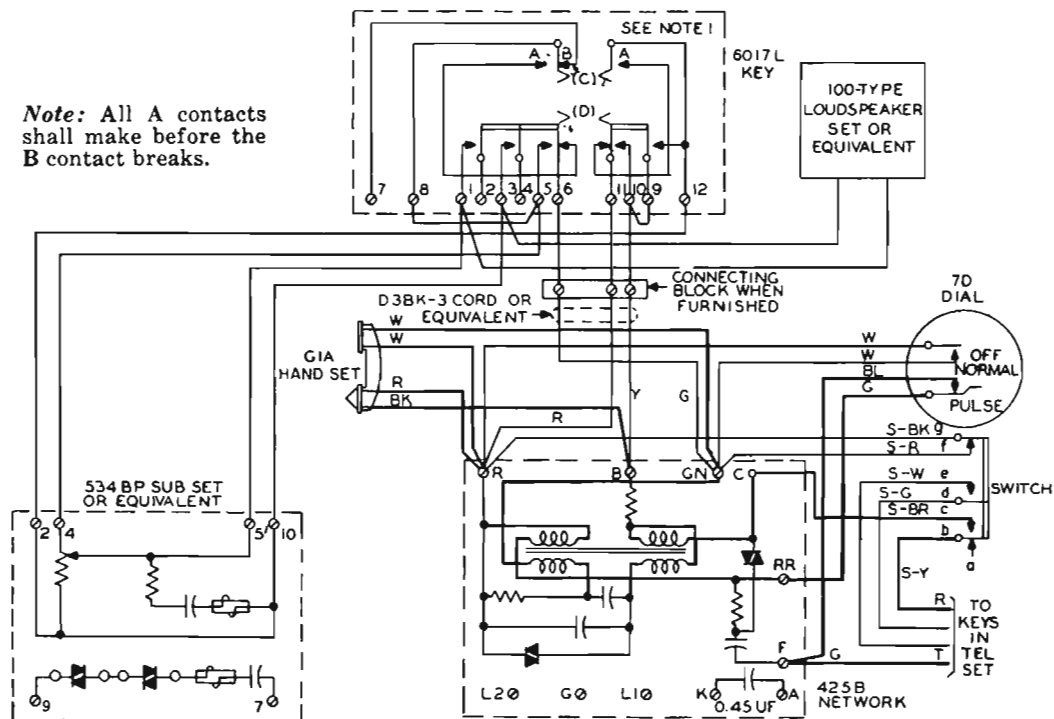


Fig. 11 — 5B Key Equipment Using Alternate Circuit, Connections to 540- or 560-Type Telephone Set Used with 1A or 1A1 Key Telephone System