

Northern Telecom Practices: 502-9001-201

Date : Dec. 14th, 1979

**Product: Antique / Decorator Telephone Sets
The Collector's Edition.**

**Type No's : MD9149 / MD9150 / MD9151 &
MD9152**

**Purpose: Identification, Connections, &
Maintenance.**

OCR = Yes

**ANTIQUE/DECORATOR TELEPHONE SETS
(THE COLLECTOR'S EDITION)**
MD9149, MD9150, MD9151 AND MD9152-TYPE
IDENTIFICATION, CONNECTIONS AND MAINTENANCE



Fig. 1 — MD9149 Telephone Set



Fig. 2 — MD9150 Telephone Set

CONTENTS	PAGE
1. GENERAL	1041
2. IDENTIFICATION	1042
3. CONNECTIONS	1043
4. MAINTENANCE	1045
5. PACKING INSTRUCTIONS	1054

1. GENERAL

1.01 The MD9149-, MD9150-, MD9151- and MD9152-type telephone sets are cradle-phone-type antique/decorator sets. The handset cradle extends approximately 5 inches (127 mm) above the base.

1.02 The MD9149-, MD9150-, and MD9152-type sets have a rectangular base whereas the MD9151-type set has a round base. All sets are available with a rotary dial only.



Fig. 3 — MD9151 Telephone Set



Fig. 4 — MD9152 Telephone Set

1.03 These telephone sets are equipped with a 4-conductor, flat, plug-ended mounting cord. The sets are factory-wired for individual or bridged service.

1.04 The ringer volume control is located on the bottom of the telephone set base.

2. IDENTIFICATION

TELEPHONE SET	STYLE OF BASE	DIMENSIONS						MATERIAL USED
		WIDTH		DEPTH		HEIGHT		
		in.	mm	in.	mm	in.	mm	
MD9149	Classique	7	178	6	152	4-3/4	121	walnut
MD9150	Renaissance	7	178	6	152	4-3/4	121	briar wood
MD89152	Moderne	7	178	6	152	5-1/4	133	brown onyx
MD9151	Romantique	diameter		6-1/2	165	4	102	—

3. CONNECTIONS

3.01 For information concerning connections, consult the schematic diagram (Fig. 5) and Table A.

3.02 The ringer volume control has a cutoff position which is obstructed by a blocking screw. To provide the ringer cutoff feature, remove the blocking screw from the underside of the ringer through the access hole in the base of the telephone set.

TABLE A
CONNECTION INFORMATION

		INDIVIDUAL OR BRIDGED	RING PARTY	TIP PARTY	TIP PARTY 2650 IDENT	'A' LEAD CONTROL
Mounting Cord at Network	R G Y BK	L2 L1 G *	L2 L1 G *	L1 L2 G *	L1 L2 G *	L2 L1 G L3
Ringer	BK S R S-R	L1 * K *	G * K *	G * K *	G * K B	L1 * K *
Dial	BL G W W	F RR R GN	F RR R GN	F RR R GN	F RR R GN	F RR R GN
Line Switch	S-G S-W S-R S-BK S-BL G S-BR S-Y S	L1 F GN R L3 L3 C L2 A	L1 F GN R L3 L3 C L2 A	L1 F GN R L3 L3 C L2 A	L1 F GN R L3 L3 C L2 A	L1 F GN R L3 L3 G C L2 A
* Indicates insulate and store.						

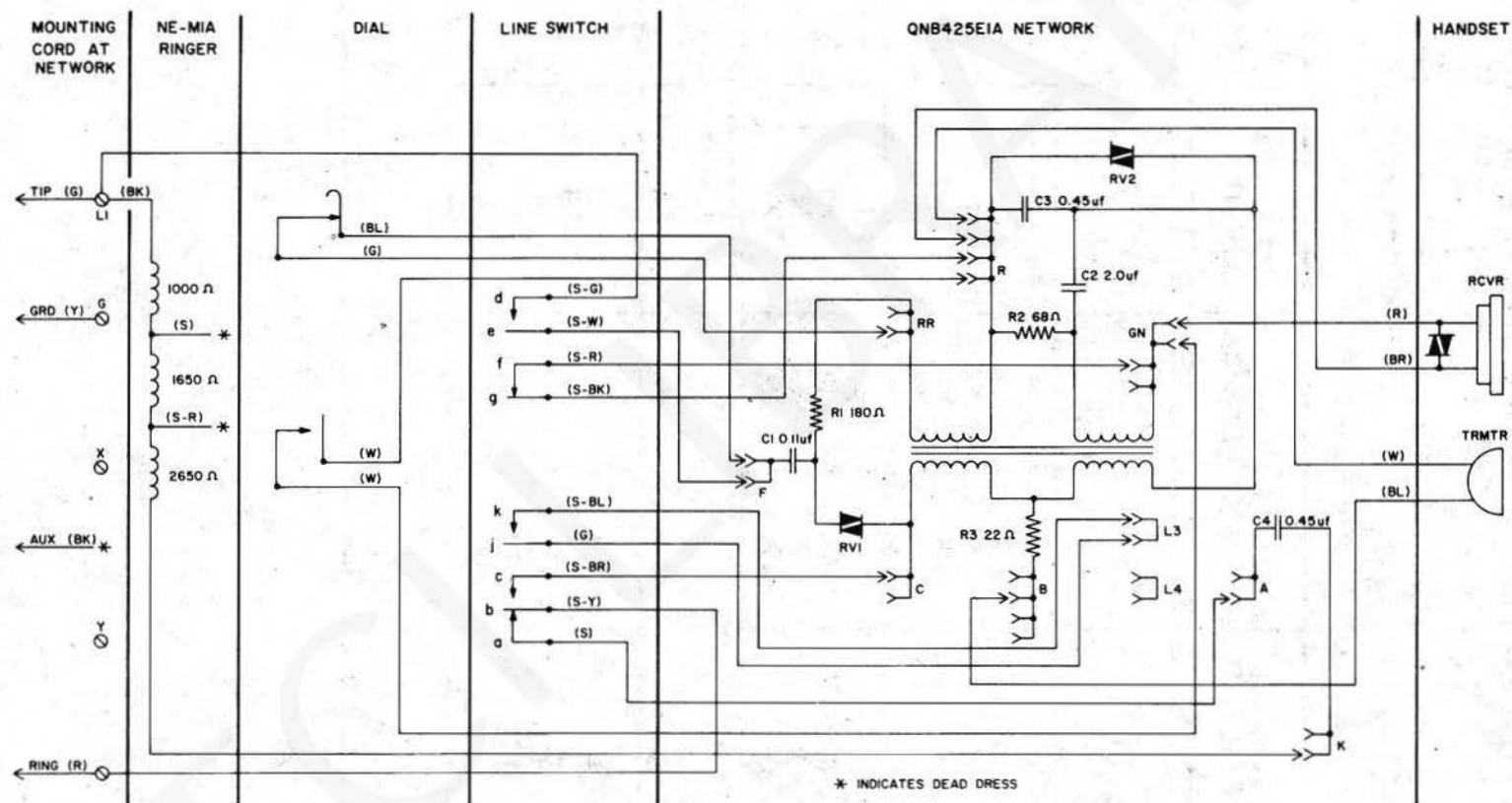


Fig. 5 — Schematic Diagram for MD9149-, MD9150-, MD9151- and MD9152-Type Telephone Sets

4. MAINTENANCE

Chart 1 Substitution of Dial

4.01 Replaceable parts should be limited to those listed in Tables B through F and shown in Figs. 6 through 10.

Chart 2 Substitution of Handset Cord (for MD9149-, MD9151- and MD9152-type sets)

4.02 Information for substitution of the dial and handset cords is given in the following charts:

Chart 3 Substitution of Handset Cord (for MD9150-type set).

TABLE B
NORTHERN TELECOM REPLACEABLE PARTS

		TELEPHONE SET CODE			
		MD9149	MD9150	MD9150	MD9152
Network	QNB425E1A*	X	X	X	X
Line Switch	P0526903	X	X	X	X
Ringer	NE-M1A*	X	X	X	X
Dial	MD9154		X		
Dial	MD9155	X			
Dial	MD9156			X	X
Mounting Cord	NE-D4QH-87*	X	X	X	X
Receiver Unit	QUU1A*	X	X	X	X
Transmitter Unit	NE-T1*	X	X	X	X
* Indicates field-replaceable items.					

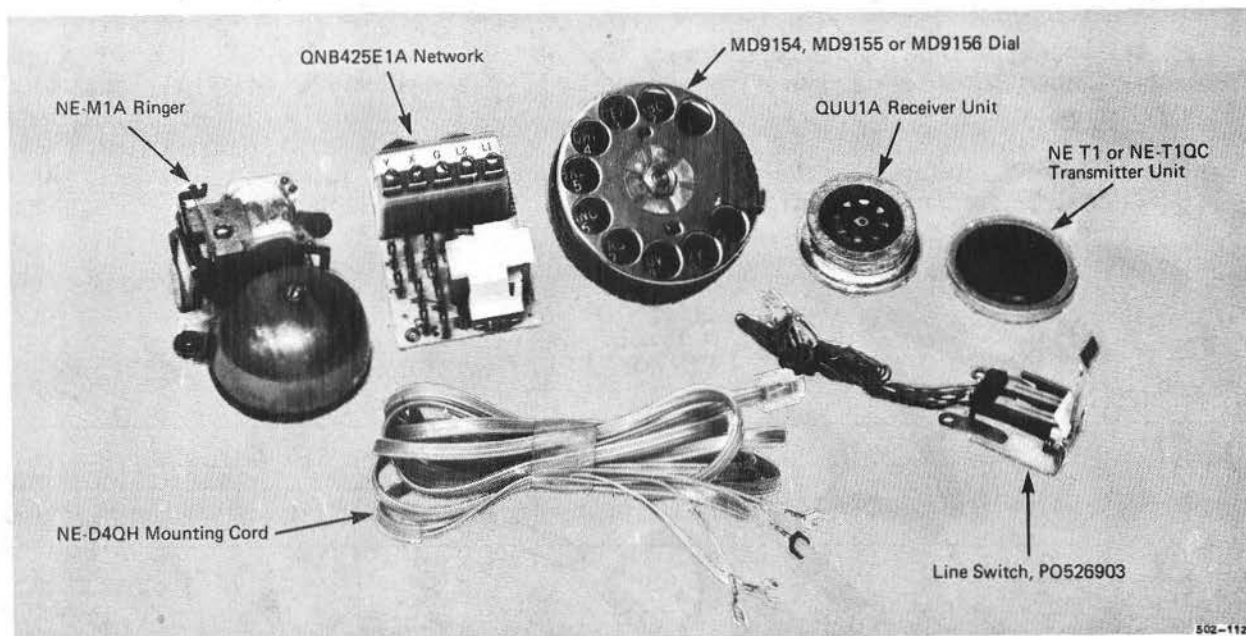


Fig. 6 — Northern Telecom Replaceable Parts

TABLE C
MD9149 TELEPHONE SET
IDENTIFICATION OF PARTS (Fig. 7)

ITEM NO.	DESCRIPTION	TELKER PART NO.	NORTHERN TELECOM PART NO.
1	Handset Handle Assembly	60.016	C0053906
2	Handset Cord	20.354	C0053907
3	Transmitter Cup Assembly	40.186	C0053908
4	Transmitter Cap	40.255	C0053909
5	Receiver Cup	40.183	C0053910
6	Receiver Cap	40.259	C0053911
7	Cradle Assembly	60.010	C0053912
8	Foot	60.000	C0053913
9	Dial Housing	60.004	C0053914
10	Number Card	41.240	C0053915
—	Felt Pad (4)	20.178	C0053916

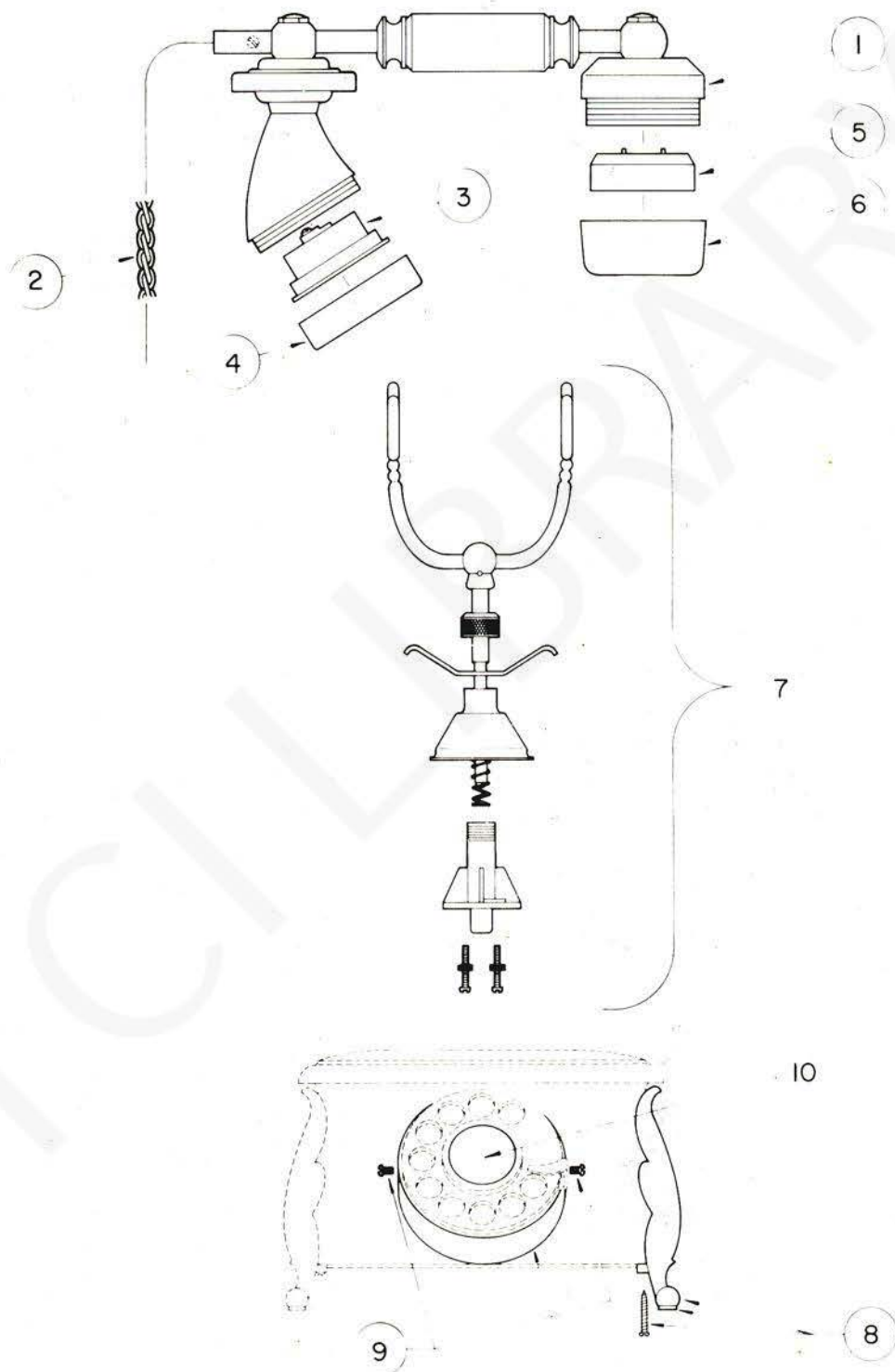


Fig. 7 — Exploded View of MD9149 Telephone Set (Classique)

TABLE D
MD9150 TELEPHONE SET
IDENTIFICATION OF PARTS (Fig. 8)

ITEM NO.	DESCRIPTION	TELCER PART NO.	NORTHERN TELECOM PART NO.
1	Handset Handle Assembly	60.021	C0053931
2	Handset Cord	20.355	C0053937
3	Receiver Cap	60.025	C0053924
4	Transmitter Cup Assembly	40.132	C0053925
5	Transmitter Cap	60.027	C0053926
6	Cradle Assembly	60.014	C0053927
7	Dial Housing	60.005	C0053928
8	Foot	60.001	C0053929
9	Number Card	41.238	C0053930
—	Felt Pad (4)	20.178	C0053916

TABLE E
MD9151 TELEPHONE SET
IDENTIFICATION OF PARTS (Fig. 9)

ITEM NO.	DESCRIPTION	TELCER PART NO.	NORTHERN TELECOM PART NO.
1	Handset Handle Assembly	60.018	C0053917
2	Handset Cord	20.356	C0053918
3	Transmitter Cup Assembly	40.186	C0053908
4	Transmitter Cap	40.255	C0053909
5	Receiver Cup	40.183	C0053910
6	Receiver Cap	42.018	C0053919
7	Cradle Assembly	60.012	C0053938
8	Dial Housing	60.006	C0053939
9	Number Card	41.239	C0053920

TABLE F
MD9152 TELEPHONE SET
IDENTIFICATION OF PARTS (Fig. 10)

ITEM NO.	DESCRIPTION	TELCER PART NO.	NORTHERN TELECOM PART NO.
1	Handset Handle Assembly	60.020	C0053921
2	Handset Cord	20.354	C0053907
3	Transmitter Cup Assembly	40.186	C0053908
4	Transmitter Cap	40.255	C0053909
5	Receiver Cup	40.183	C0053910
6	Receiver Cap	40.259	C0053911
7	Cradle Assembly	60.013	C0053935
8	Top Plate	60.023	C0053922
9	Dial Housing	60.007	C0053936
10	Number Card	42.356	C0053923

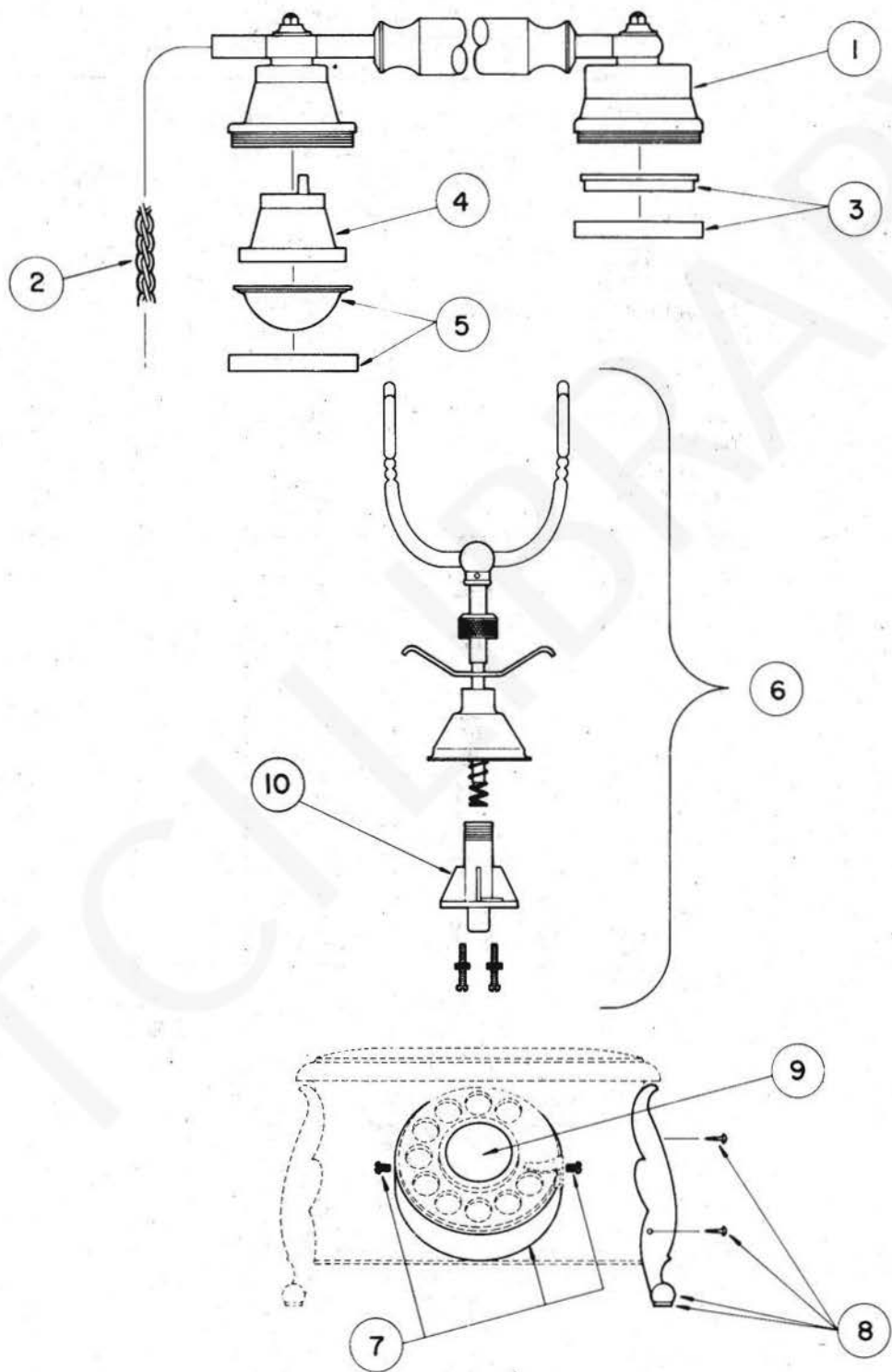


Fig. 8 — Exploded View of MD9150 Telephone Set (Renaissance)

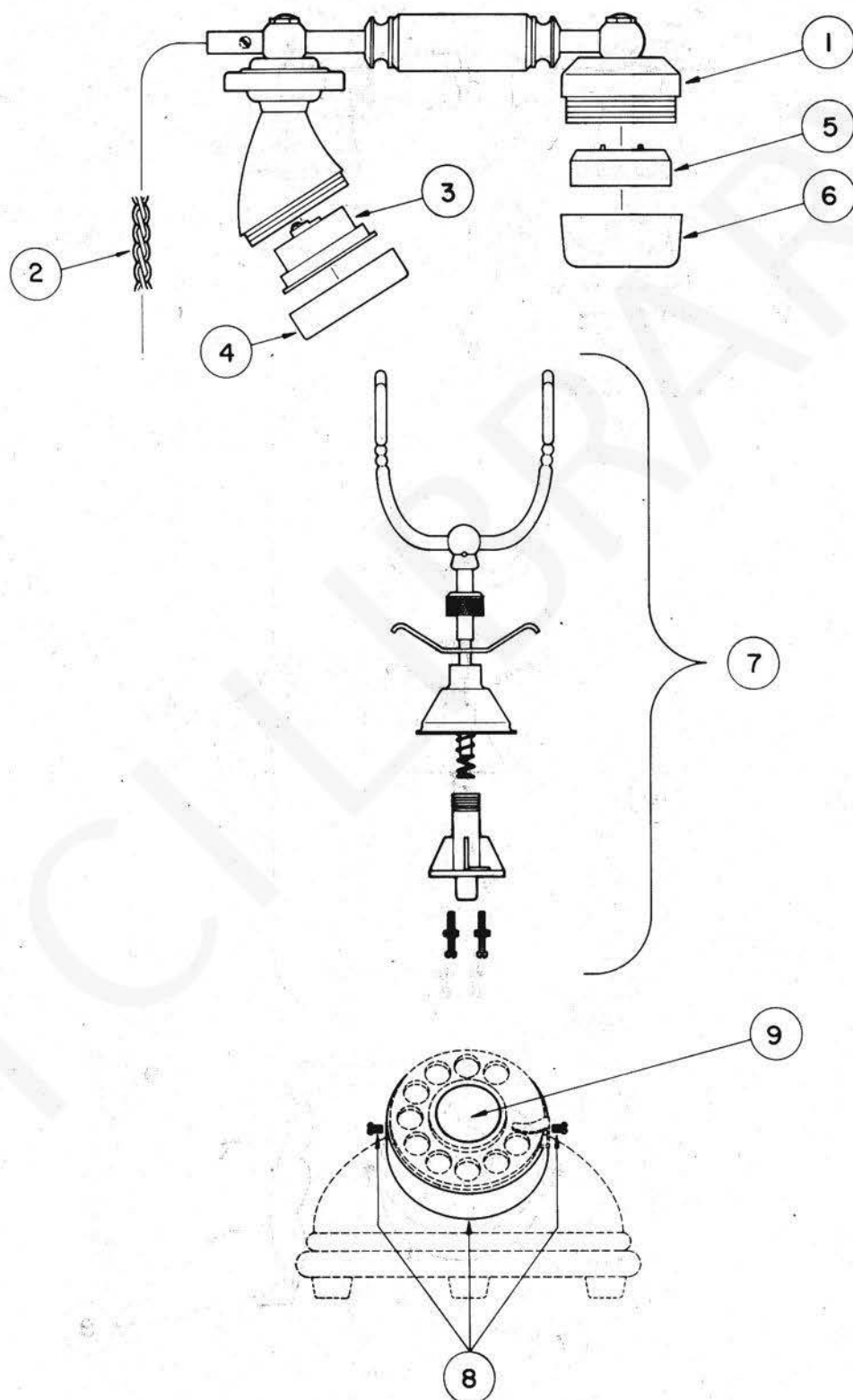


Fig. 9 — Exploded View of MD9151 Telephone Set (Romantique)

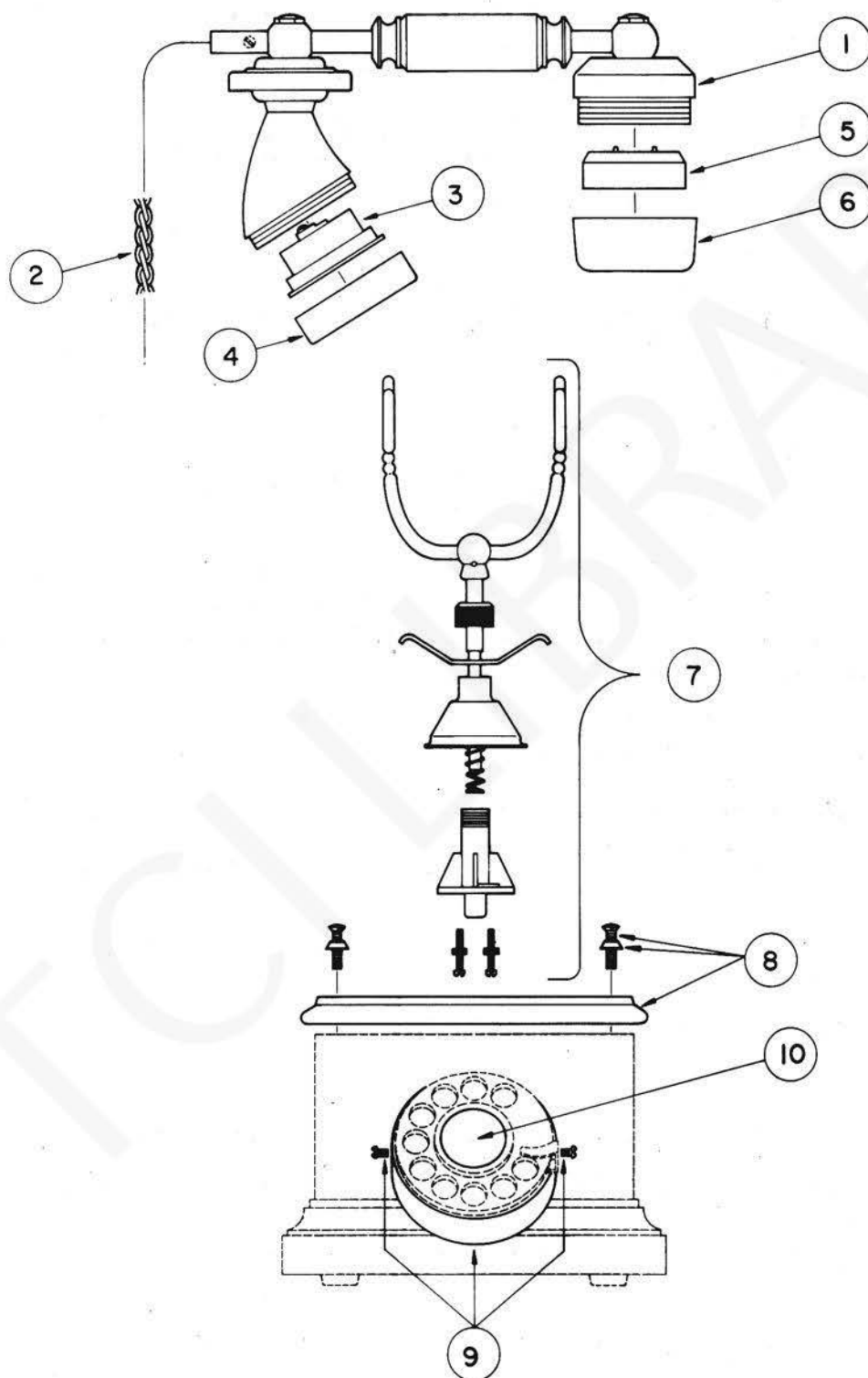


Fig. 10 — Exploded View of MD9152 Telephone Set (Moderne)

CHART 1 SUBSTITUTION OF THE DIAL

STEP	PROCEDURE
1	Remove the screw from either side of the dial housing.
2	Remove the dial from the dial housing.
3	Disconnect the leads from the dial, and remove the brackets from the dial.
4	Install the brackets to the new dial, and replace the dial in the dial housing. See Table A for connections.

CHART 2 SUBSTITUTION OF THE HANDSET CORD (For MD9149-, MD9151- and MD9152-Type Sets)

STEP	PROCEDURE
1	Remove the transmitter and receiver caps.
2	Remove the transmitter and receiver units.
3	Disconnect the handset cord leads from the transmitter cup, and remove the transmitter cup and receiver cup.
4	Disengage the three screws in the transmitter horn assembly, and remove the assembly (see Fig. 11).
5	Remove the strain relief screw from the handset.
6	Remove the handset cord.
7	Carefully remove the two large screws on the back of the handset (Fig. 11).
8	Replace the handset cord and reassemble the handset. See schematic diagram (Fig. 5) for connections.

CHART 3
SUBSTITUTION OF THE HANDSET CORD
 (For MD9150-Type Set)

STEP	PROCEDURE
1	Remove the transmitter cap and receiver cap.
2	Remove the transmitter and receiver units.
3	Disconnect the handset cord leads from the transmitter cup, and remove the transmitter cup and receiver cup.
4	Carefully remove the two large screws on the back of the handset (see Fig. 11).
5	Remove the handset cord.
6	Replace the handset cord, and reassemble the handset. See schematic diagram (Fig. 5) for connections.

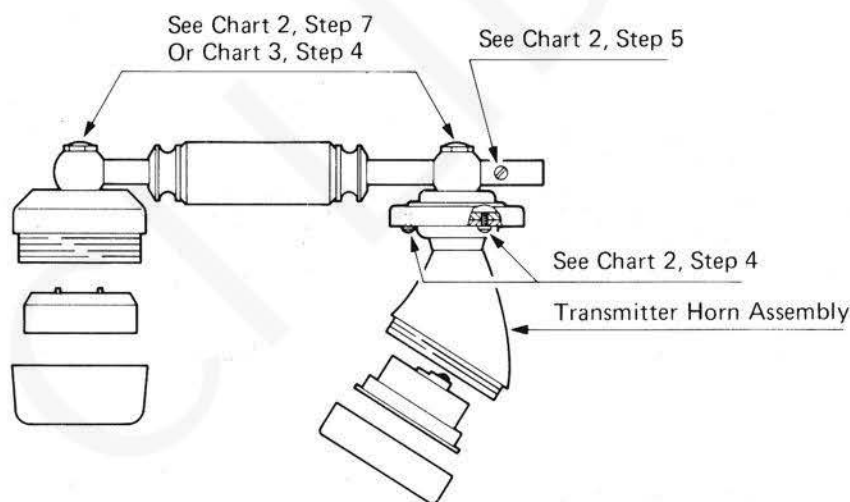


Fig. 11 — View Showing Disassembly of Handset

5. PACKING INSTRUCTIONS

5.01 Antique/decorator telephone sets can be easily damaged in transit, if they are not properly packaged. Before returning a disconnected set, carefully pack it according to the following instructions.

- (1) Obtain the original packing material.
- (2) Place a large plastic bag completely over the telephone set housing.

- (3) Place a plastic bag completely over the handset.

- (4) Place the housing and handset in their respective cavities in the foam inserts. Gather the mounting cord as shown in Fig. 12, and place in the housing cavity under the dial as shown.

- (5) Arrange the handset cord in a similar manner as the mounting cord.

- (6) Enter the complete assembly into the carton.

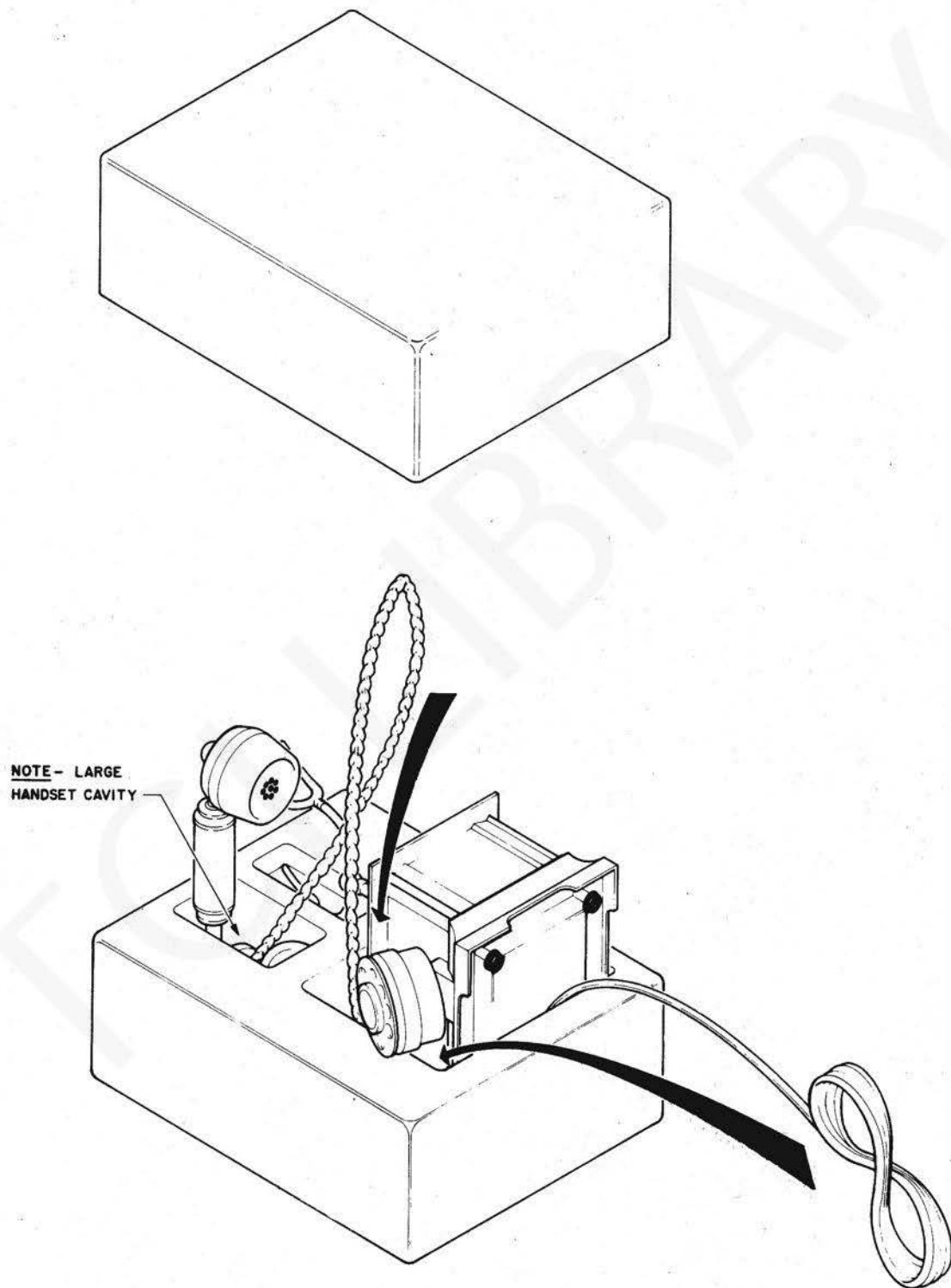


Fig. 12 — Telephone Set Packing Instructions