

9A HANDSET HANGERS IDENTIFICATION AND INSTALLATION NONMULTIPLE PBX SWITCHBOARDS

1. GENERAL

1.01 This section covers the identification and installation of the 9A handset hanger on nonmultiple PBX switchboards.

1.02 This section is reissued:

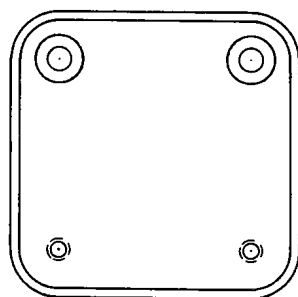
- (a) To add the code of the handset hanger to the title.
- (b) To add a new figure showing the components of the handset hanger.
- (c) To delete the information on the 5A handset hanger which is "Manufacture Discontinued."

- (d) To revise the information on the 555 and 556A PBX.

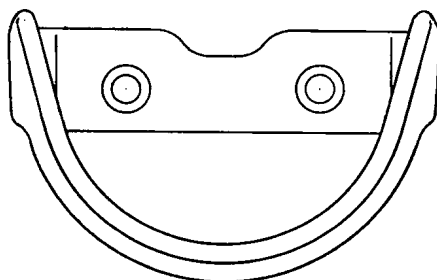
Since this reissue covers a general revision, arrows ordinarily used to indicate changes have been omitted.

2. IDENTIFICATION

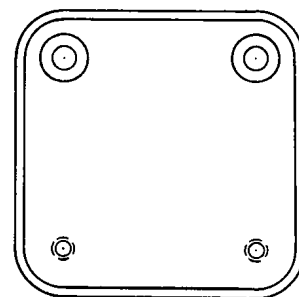
2.01 The handset hanger consists of a black finished metal hook arranged for supporting a handset, and two black finished metal bumper plates in each of which is mounted a black rubber pad. Components of the hanger and the screws furnished for attachment are shown in Fig. 1.



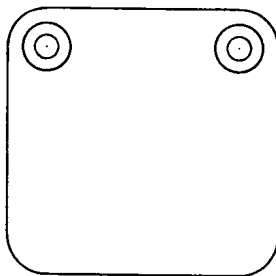
UPPER
BUMPER PLATE



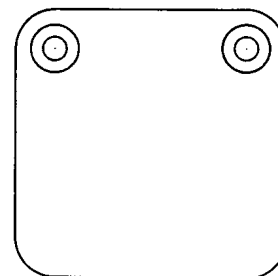
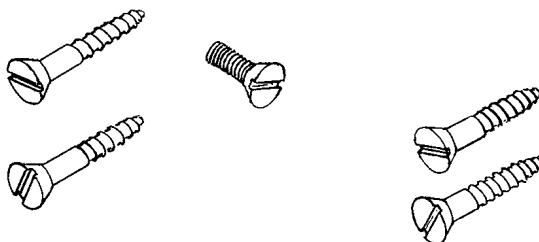
HANDSET HANGER



LOWER
BUMPER PLATE

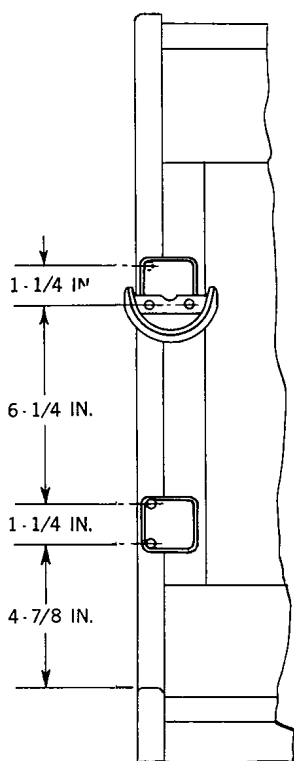


RUBBER PAD

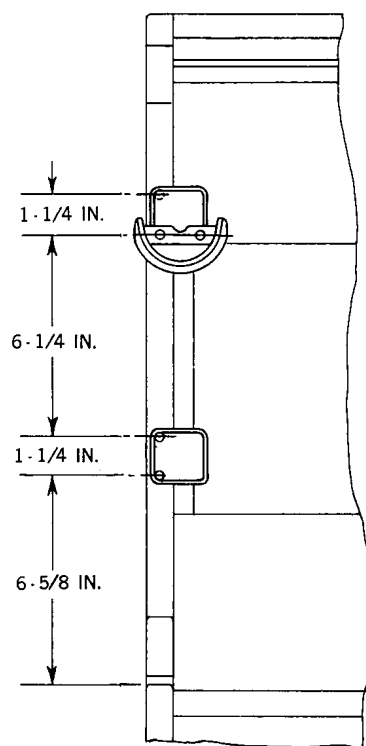


RUBBER PAD

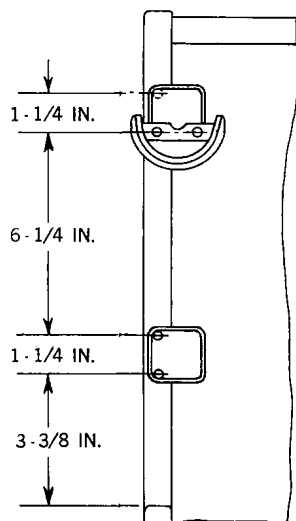
Fig. 1 - 9A Handset Hanger



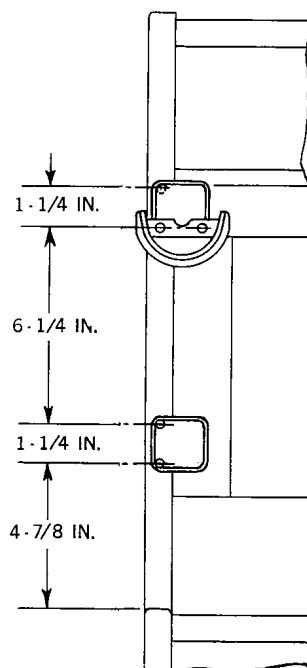
550B AND 550C (320 LINE),
551B, 552A, 552B, 554C,
AND 700C PBX



550SC (80 LINE) PBX



550B, 550C, 550SC (30 LINE),
AND 551A PBX



550B AND 550C (80 LINE) PBX

Fig. 2 – Mounting Information for 9A Handset Hanger

3. TOOLS AND MATERIALS

3.01 Tools: Those normally used for installation work.

3.02 Materials: Screws, as shown in Fig. 1, are provided with the hanger.

4. INSTALLATION

550-, 551-, 552-, 554-, and 700-Type Switchboards

4.01 Measure and drill the end panels of the switchboard provided and mount the hanger and bumper plates as shown in Fig. 2 and Fig. 3.

Note: The bumper plates are positioned so that the two larger holes in the plates are used to attach the plates to the end panel.

4.02 On 550B, 550C, or 550SC switchboards, when the hanger obstructs the view of the instruction card, relocate the card on the right side of the top rail of the switchboard. On the 551A switchboard, relocate the card 1-1/2 inches to the right of the switchboard left end panel. If glass equipped instruction card holders are encountered replace with a black phenol fiber instruction card.

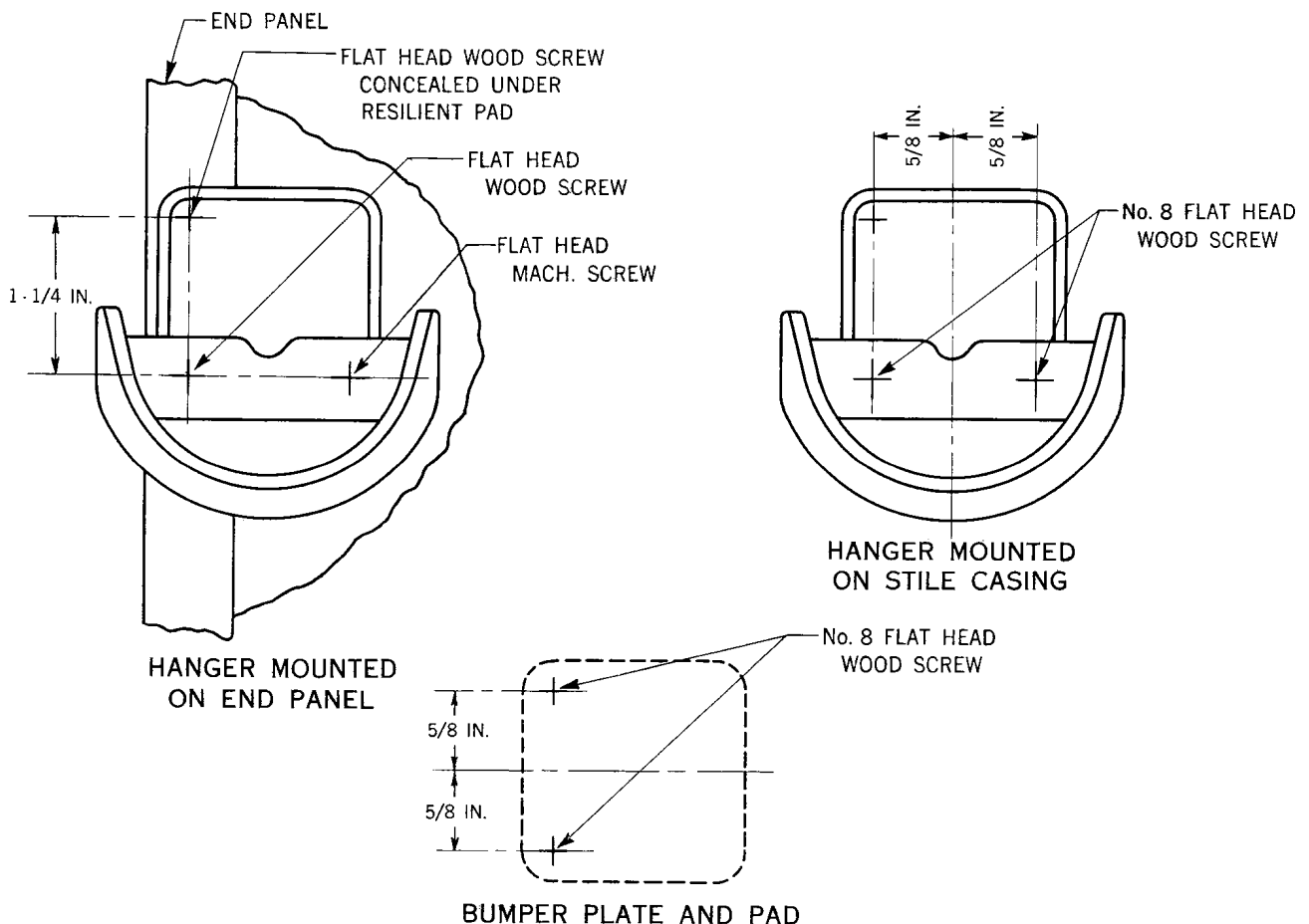


Fig. 3 - Drilling Information for 9A Handset Hanger

555 and 556A Switchboards

4.03 Early manufactured 555 switchboards were provided with a piece part handset hanger which was fastened to the stile casing with wood screws. Fig. 4 shows the recommended location if it becomes necessary to replace the

original handset hanger with a 9A handset hanger.

4.04 Later manufactured 555 and all 556A switchboards are equipped with screw bushing and mounting screws for mounting the hanger. The mounting screws serve to fill the screw holes when the hanger is not furnished.

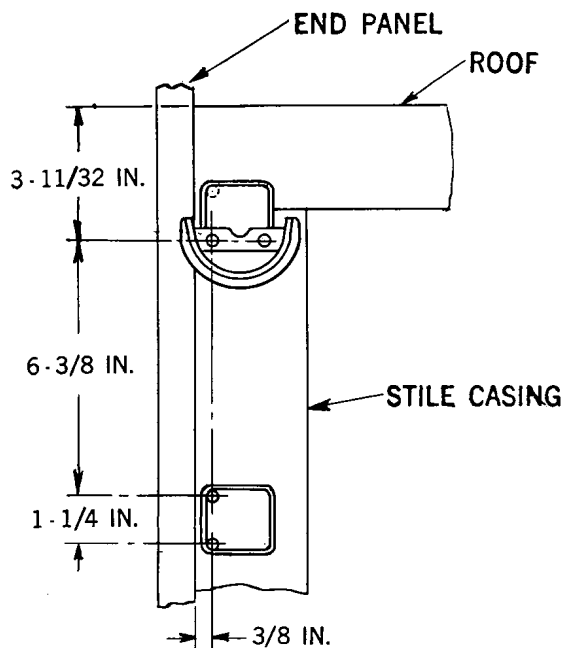


Fig. 4 – 555 Switchboard