

62A CONTROL UNIT

IDENTIFICATION, INSTALLATION, AND CONNECTIONS

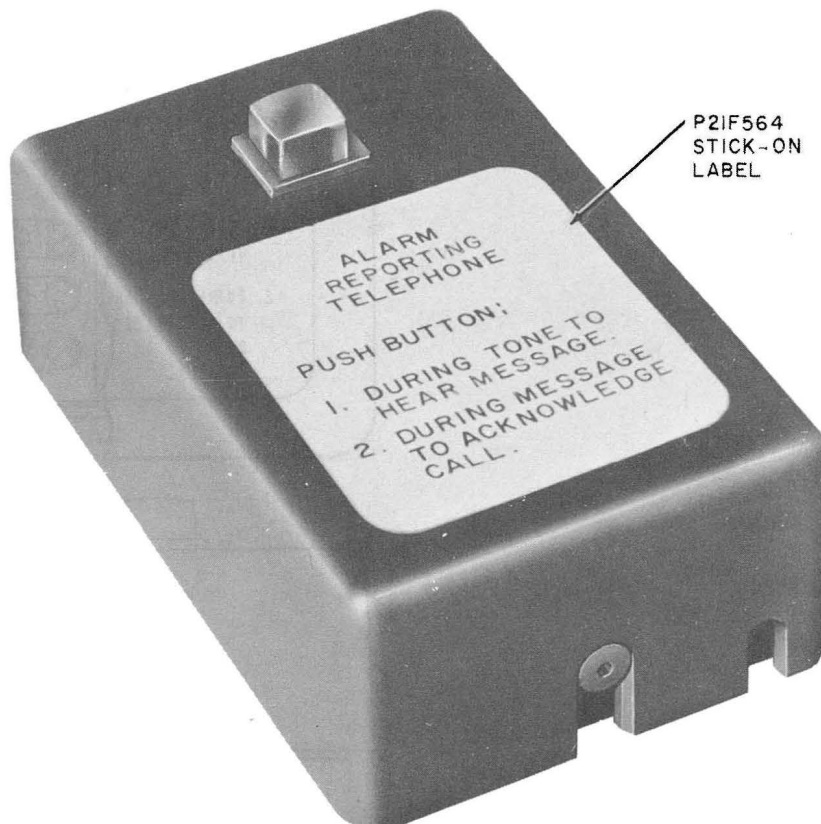


Fig. 1—62A Control Unit

1. GENERAL

1.01 The 62A control unit is a transistorized, 1475 cps oscillator intended for use with the control telephone, console, or switchboard which receives calls from a 1A or 1B telephone reporting set.

2. IDENTIFICATION

2.01 The control unit consists of an oscillator, polarity guard, and pushbutton switch mounted on a circuit board. The circuit board mounts on a steel base approximately 3-1/2 inches long by

2-inches wide. The assembly is covered by a plastic housing which has a stick-on instruction label.

2.02 A screw-type terminal board inside the unit is arranged to terminate inside wiring or a 4-conductor mounting cord. The mounting cord must be ordered separately.

2.03 When the control unit is connected to a telephone set, operation of the pushbutton switch:

- (a) Connects a resistance of 5600 ohms in series with the receiver to limit the output signal to a comfortable listening level at the receiver.

SECTION 514-230-102

- (b) Opens the transmitter circuit and couples the oscillator output to the line.
- (c) Closes dc power to the oscillator from the line.

2.04 The control unit will be produced in one color, light gray (-61). Other colors may be obtained by ordering a P-21F564 label and an appropriate colored housing, and changing the housing in the field. The housings are available in the following standard colors:

P-84H503-Black

P-84H551-Green

P-84H556-Yellow

P-84H558-White

P-84H559-Pink

P-84H560-Light Beige

P-84H561-Light Gray

P-84H562-Aqua Blue

P-84H564-Turquoise

3. INSTALLATION

3.01 The control unit may be desk or wall mounted. Two mounting screw slots are provided in the base of the unit. To obtain access to the slots:

- (1) Loosen two housing retaining screws (Fig. 2), using appropriate wrench from C Key Kit, and remove housing.

- (2) Remove the one terminal board retaining screw (Fig. 2) and remove terminal board.

3.02 Route mounting cord or inside wiring through entrance hole provided at one end of the unit.

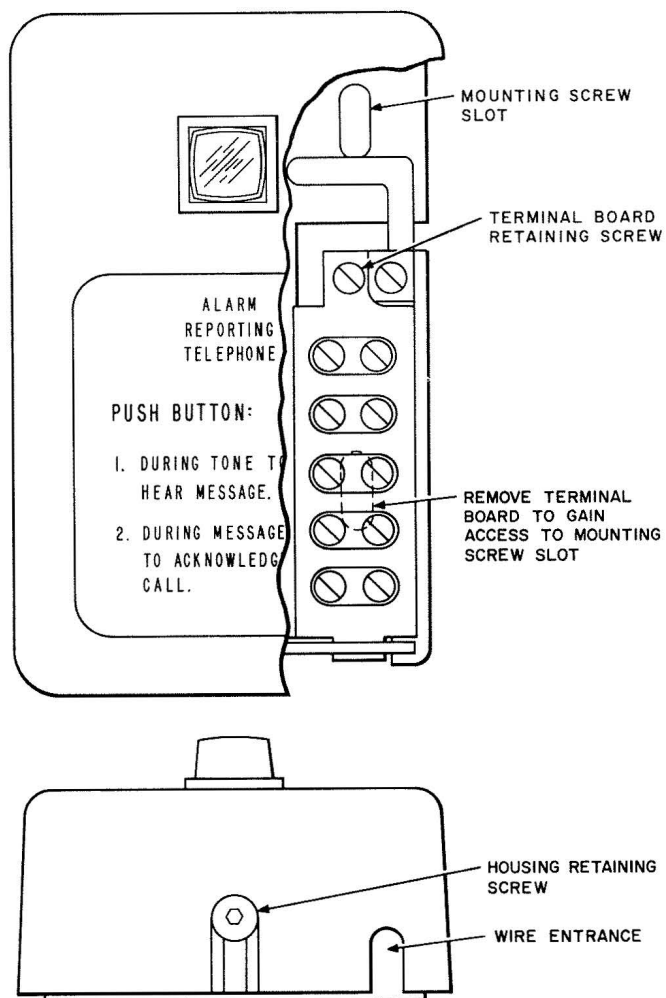


Fig. 2—Mounting Details

4. CONNECTIONS

4.01 Refer to Fig. 3 when connecting control unit to station sets equipped with 425- or 4010-type networks.

4.02 Connections to other station equipment will be included in the attendant's position or telephone circuit in appropriate SDs.

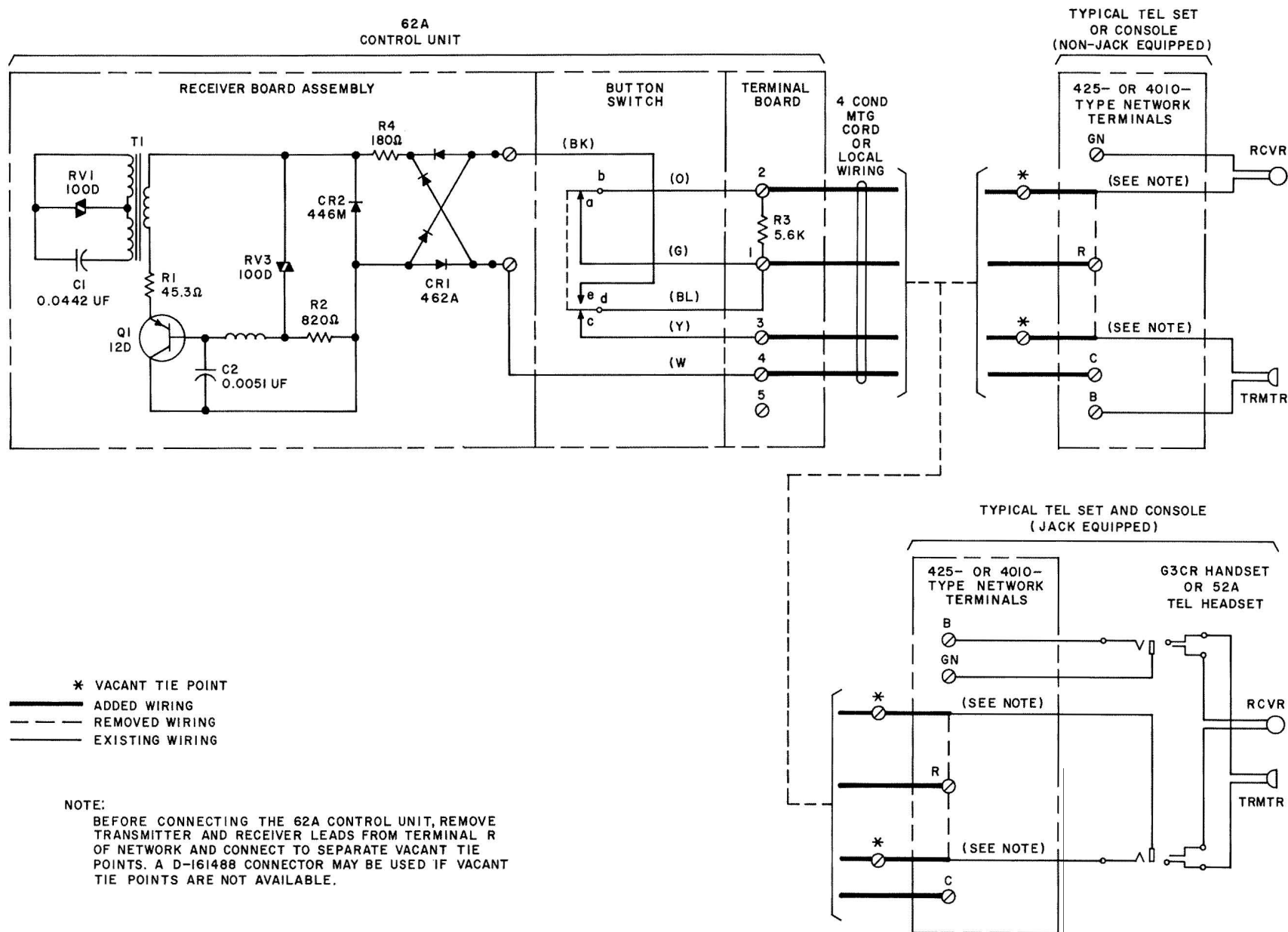


Fig. 3—62A Control Unit, Connections