

TELEPHONE SETS — 357A
MAGNETO — CONNECTIONS

1.00 INTRODUCTION

This section covers the combination of apparatus, circuit diagram, and connections for the 357A telephone set when used with a magneto subscriber set.

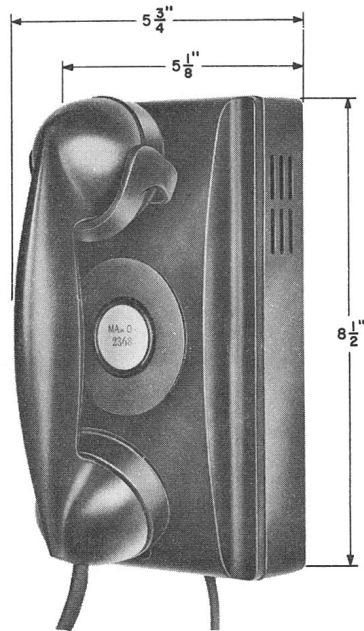


FIG. 1—357 TYPE

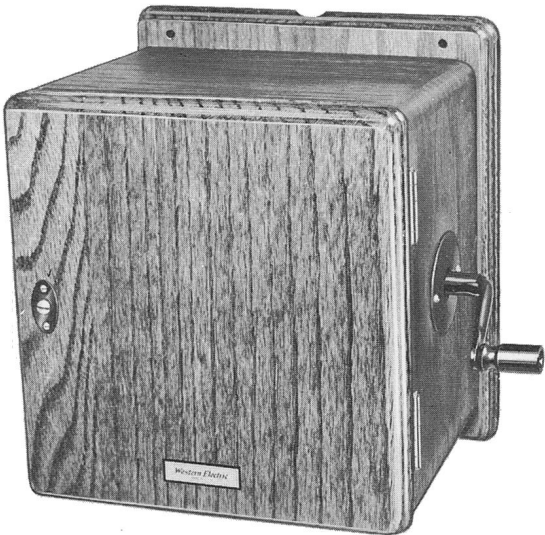


FIG. 2—299F OR D-176680 TYPE

TABLE A—COMBINATION OF APPARATUS

Tel. Set Code	Use	Components					
		Handset	Apparatus Blank	Induction Coil	Ringer	Capacitor	Inductor
357A	Magneto	F1	94A	104A	B1AL	387A	266A
299F		5-Bar Generator (48A)					
D-176680		3-Bar Generator (D-176681)					

2.00 RINGERS

The ringing bridge in this set is of the high-impedance type. For information on the number and type of ringing bridges permitted on each line, reference should be made to the section covering ringer limitations.

TABLE B—LINE AND RINGER CONNECTIONS

Wire or Lead		Individual or Bridged Station	Ring Party Station	Tip Party Station
			Positions 1, 3, 5, 7 and 9	Positions 2, 4, 6, 8 and 10
Line Wire in Tel. Set	R	L1	L2Y	L1
	GN	L2Y	L1	L2Y
	Y	GND	GND	GND
Ringer Lead	R	L1	K	GND
	BK	K	GND	K
Local Battery Wires in Tel. Set		BK	BK	BK
		BL	BL	BL
Magneto Wires in Tel. Set		L1	L1	L1
		L2Y	L2Y	L2Y

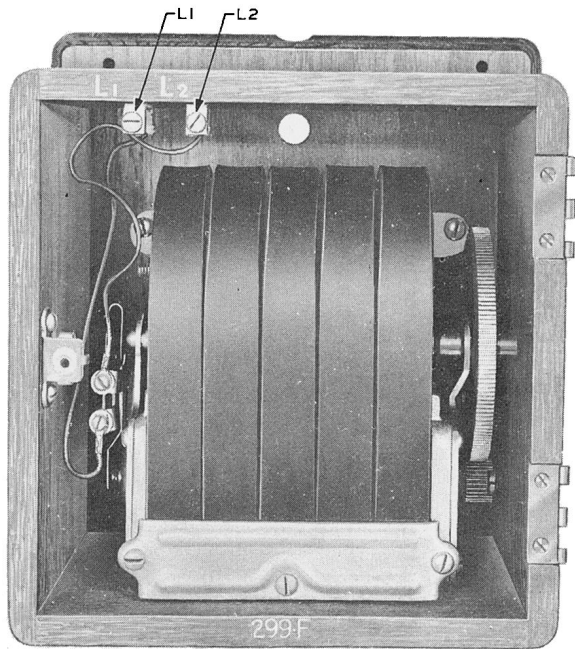


FIG. 3—299F (D-176680 HAS A 3-BAR GENERATOR)

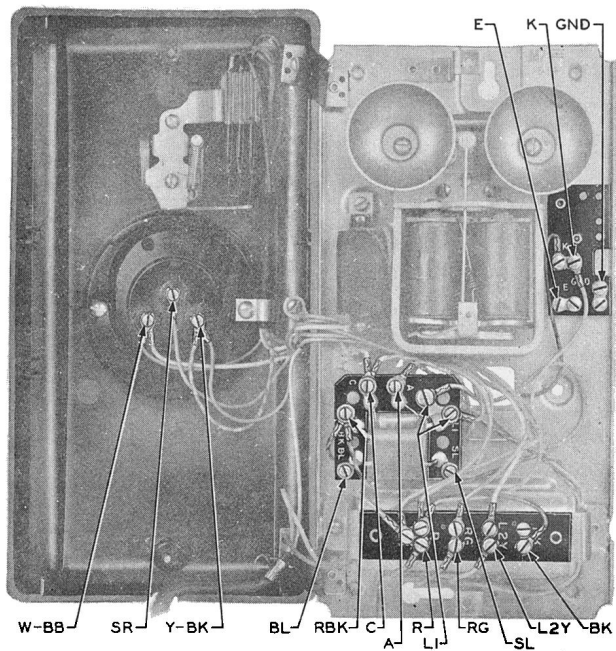


FIG. 4—357A

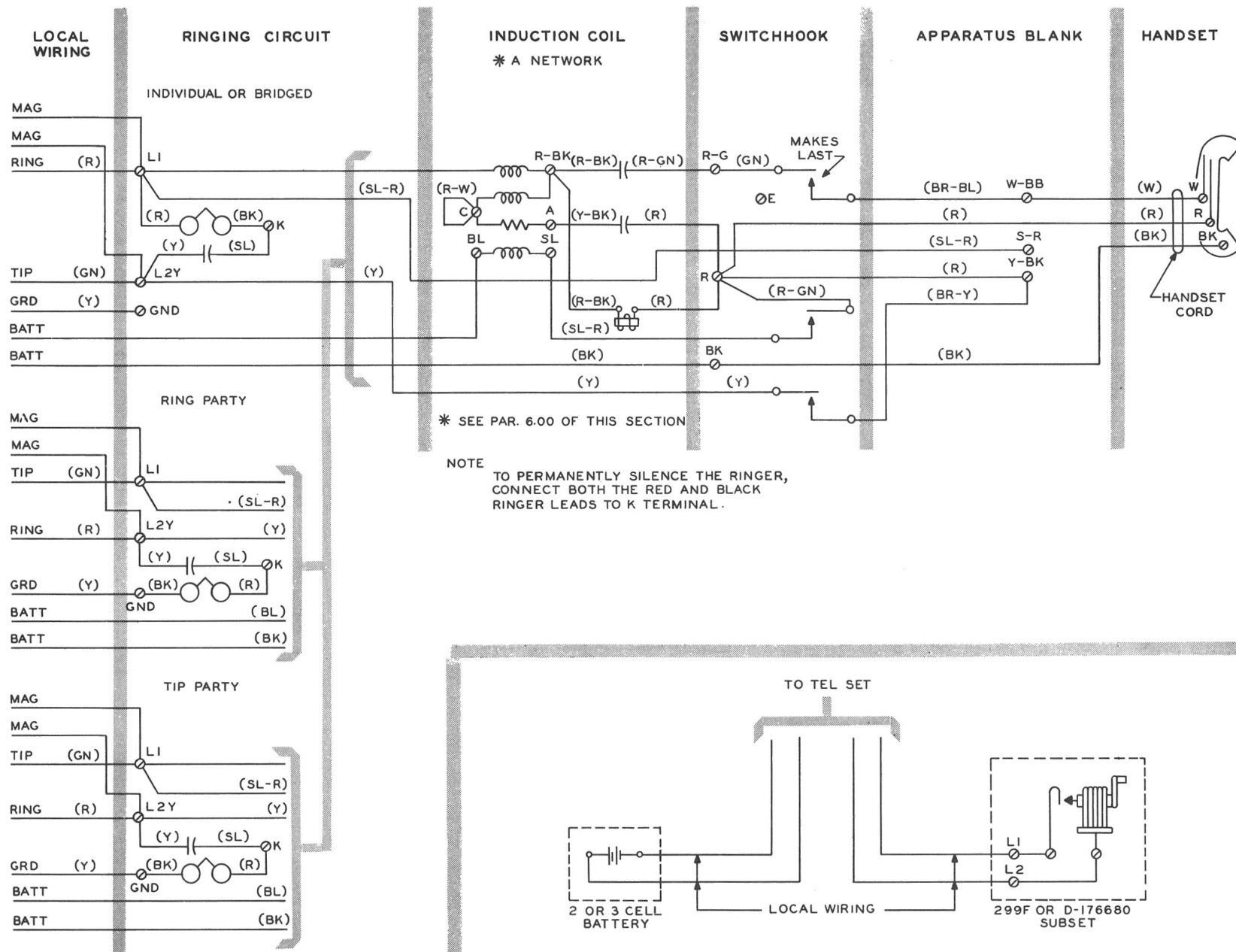


FIG. 5—357A CIRCUIT DIAGRAM

4.00 INDUCTIVE NOISE

When inductive noise is encountered at tip party stations, connect the red lead from the 266A inductor to RBK and the red-black lead to R.

5.00 COMMON SOURCE OF BATTERY

5.01 Where the transmitter battery for more than one station is obtained from a common source of supply, such as battery feed from the central office, the following changes in Fig. 5 must be made:

- Replace an F1 handset with an F2 handset.
- Connect the green conductor of the F2 handset to terminal SL. Connect the slate-red and red-green leads from the switchhook to terminals BL and E.
- Connect the battery leads to BK and E.
- Connect the red, black, and white conductors of the F2 handset the same as shown for the F1 handset in Fig. 5.

5.02 When a common source of battery supply is used, a battery feed filter must be used. For further information, see the section covering battery feed filters.

6.00 BALANCING NETWORKS

6.01 Means are provided in this set whereby various networks may be connected in the induction coil balancing circuit to obtain satisfactory side-tone balance when the set is used on the different types of subscriber loops employed in the plant.

6.02 This set is normally furnished with the type A network as indicated in Fig. 5. Necessary changes in the set to obtain other networks are as follows:

Network B: Connect a KS-8058 400-ohm, or KS-13490, List 2, 390-ohm resistor from A on induction coil to R on terminal strip. Connect red from capacitor to A on induction coil.

Network C: Connect yellow-black from capacitor to C on induction coil.

Network D: Connect yellow-black from capacitor to R on terminal strip. Connect red-white strap from C on induction coil to R on terminal strip.