

## D-180574 TELEPHONE SET

### 1. GENERAL

1.01 This section contains identification, installation, maintenance, and connection information for the D-180574 coin decorator telephone set (Fig. 1 and 2).

1.02 This section is reissued to:

- Add information on 220-type, 223-type, 230G, 233G, and 234G sets
- Add information on 685A subscriber set
- Add information on 623P4 jack and D4BU mounting cord
- Add information on new wooden bases which are available for mounting telephone set on a horizontal surface.

### 2. IDENTIFICATION

#### *Design Features*

2.01 ♦The D-180574 telephone set is a modified 220-type, 223-type, 230G, 233G, 234G, or 236C coin collector. The modification, which is performed at the service center, removes coin handling and security features, converting the coin collector to a general purpose telephone set.

2.02 Refer to Fig. 2 through 7 for component parts.

2.03 ♦All sets that do not contain a network and ringer assembly, require the use of a 685A subset.♦

2.04 ♦For table top installation, a walnut or maple wooden base (Fig. 1) is available. The base contains a 625F jack which permits the use of a D4BU mounting cord.



Fig. 1—♦D-180574 Coin Decorator Telephone Set for Table Top Installation♦

#### NOTICE

Not for use or disclosure outside the  
Bell System except under written agreement

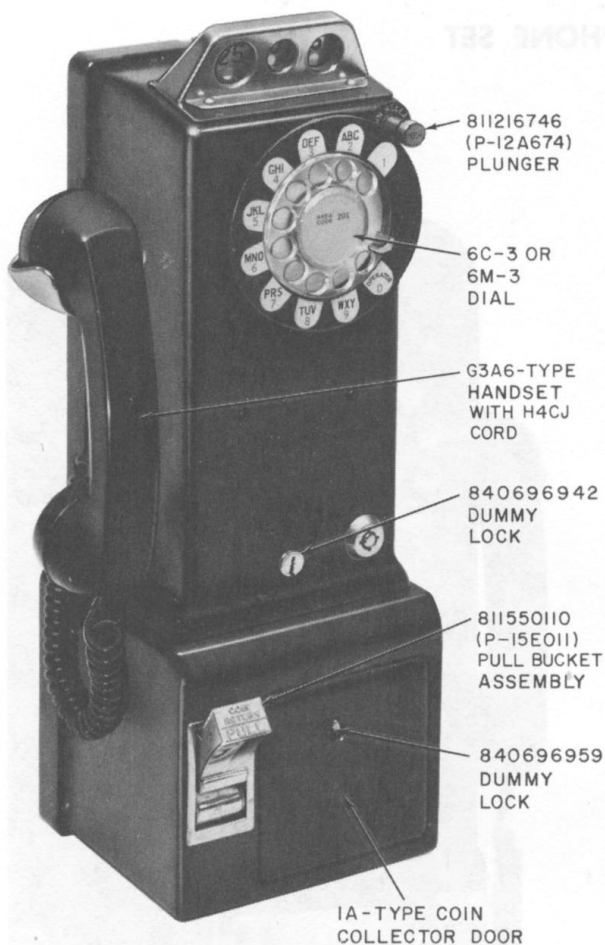


Fig. 2—D-180574 Coin Decorator Telephone Set Without Mounting Facility

(a) If a subset is required with a table top installation, use an 841385735 (walnut) or an 841385743 (maple) base. These bases contain a dummy drawer for mounting the subset.

(b) If a subset is not required, use an 841385719 (walnut) or 841385727 (maple) base.♦

**2.05** For wall mounted sets that do not require a subset, a 623P4 jack is provided on front of hopper to permit the use of a D4BU mounting cord (Fig. 6). Install a 174A backboard for this type installation.

**2.06** For wall mounted sets that require a subset, a 623P4 jack is provided on the subset to permit the use of a D4BU mounting cord (Fig. 7). Install a 144-type backboard for this type installation.

**2.07** ♦All coins deposited will fall directly into the cash compartment.♦

### ♦Markings

**2.08** The 200-type markings have been removed and D-180574 stamped in the same relative location. The letters CS, which indicate customer sales, has been stamped on the backplate adjacent to the vault area.♦

### ♦Ordering Information

**2.09** Set, Telephone, D-180574:

- Specify color; -03 (black), -51 (green), -60 (light beige), or as offered by the local telephone company.
- Specify 144-type backboard, 174A backboard, or wooden base when required.♦

## 3. INSTALLATION

**3.01** To install the set on a horizontal surface such as a table or counter top, use a walnut or maple base. (See 2.04.) The base sets on a horizontal surface without any attachments.

**3.02** To install the set on a wall, use a 144-type or 174A backboard. (See 2.05 and 2.06.)

- Install backboard on a wall with top edge 63 inches from floor or at a height specified by the customer
- Use hardware for securing backboard per Table A.

**3.03** Install set on backboard using a minimum of seven 1/4-20 by 5/8 RH machine screws.



**Remove handset from switchhook before removing or replacing upper housing to avoid damage to the gate operating arm.**

**4. MAINTENANCE**

**5.02** If a subscriber set is not used, refer to Fig. 9 or 11.4

**4.01** Perform maintenance on the decorator set in accordance with local procedures.

**5. CONNECTIONS**

**5.01** If a subscriber set is used, refer to Fig. 8 or 10.

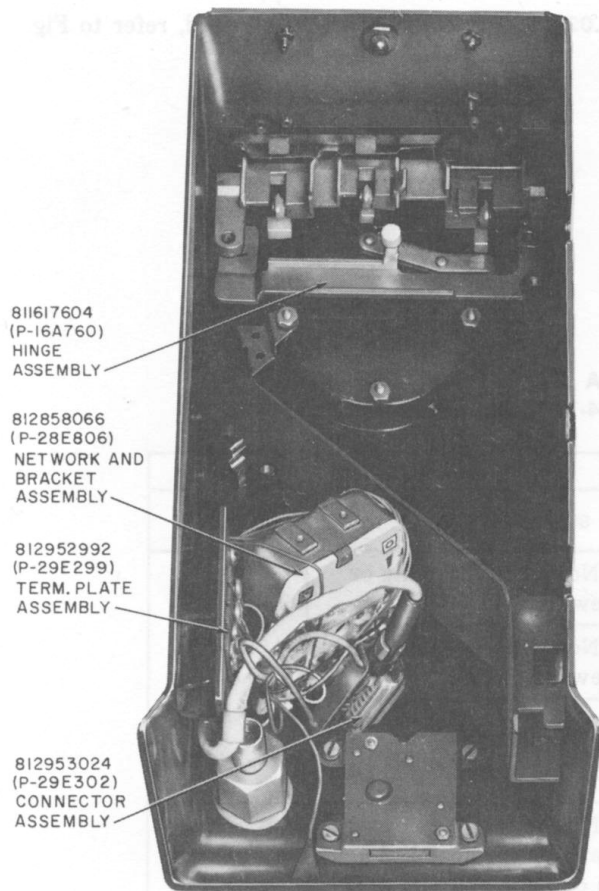
**TABLE A**  
**MOUNTING REQUIREMENTS FOR 144-TYPE OR 174A BACKBOARD**

MTG SURFACES	HOLE SIZE REQUIRED	FASTENERS	
		SIZE AND TYPE	MINIMUM QUANTITY
Soft Wood	1/8-in. or No. 30	1-3/4 in. No. 14 RH tapping or wood screw	8
Hard Wood		1-1/4 in. No. 14 RH tapping or wood screw	
Masonry*	1/2-in.	1/4-20 by 1-1/2 in. RH machine screw in 1/4 by 1-1/4 in. expansion shield	7
Plaster Board and Plaster on Lath†	1/8-in. or No. 30	1-3/4 in. No. 14 RH tapping or wood screw; secure in a stud a minimum of 1 inch	
Plaster on Cinder Block, Hollow Tile, Metal Lath	3/4-in.	1/4 by 4-inch RH toggle bolt‡	

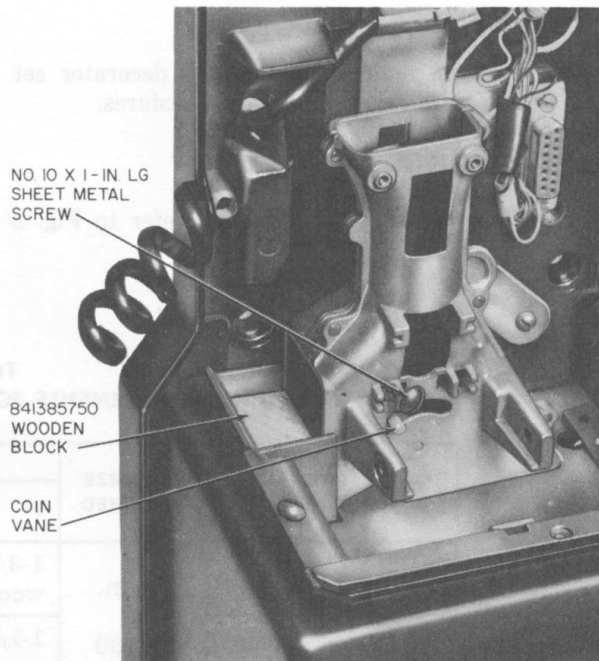
\* When mounting on plastered masonry, install expansion shield below plastered surface by amount equal to thickness of plaster and use 1/2-inch longer machine screw than specified in Table.

† When mounting on plasterboard, plaster on lath, etc, fasteners must be located in a stud and embedded at least 1 inch.

‡ When using toggle bolts, cut off excess length.



**Fig. 3—Upper Housing With Gong Signal and Chute Assembly Removed**



**Fig. 4—Partial View of Lower Housing**

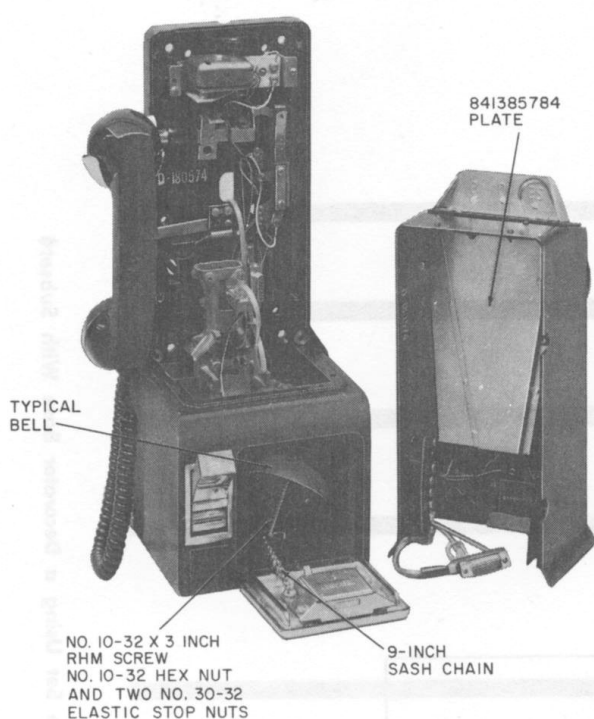


Fig. 5—Decorator Set Showing D-180573 Kit of Parts Installed

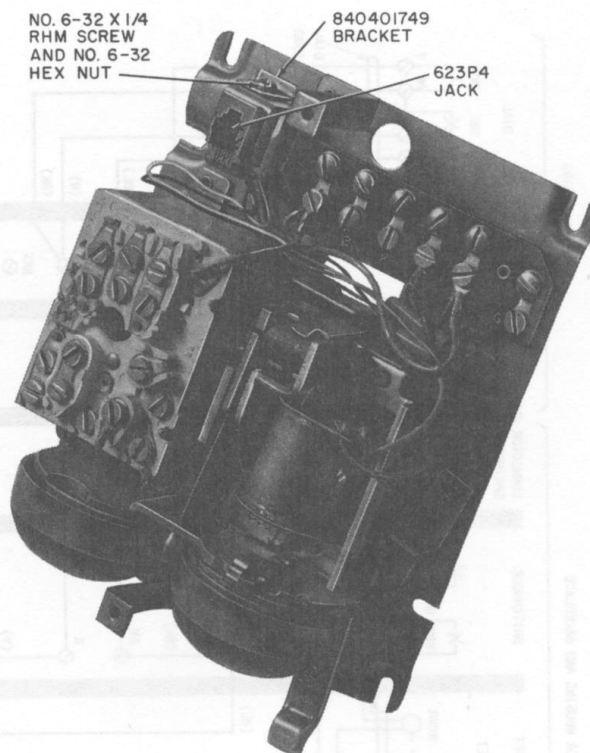


Fig. 7—685A Subset With 623P4 Jack

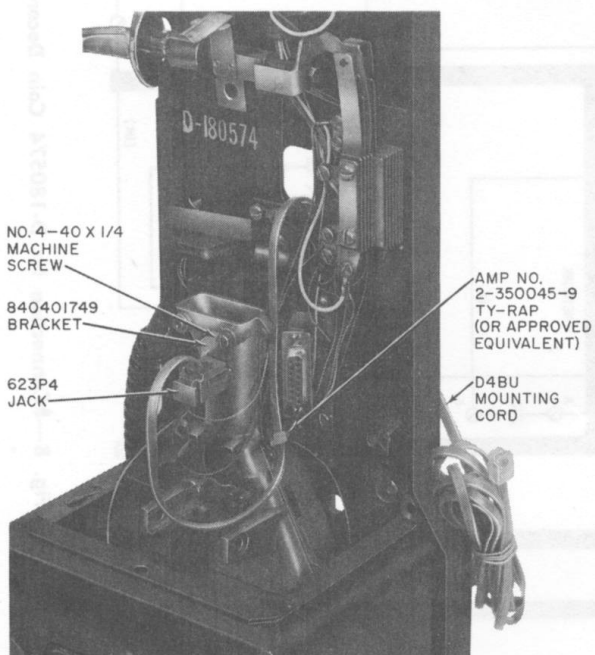
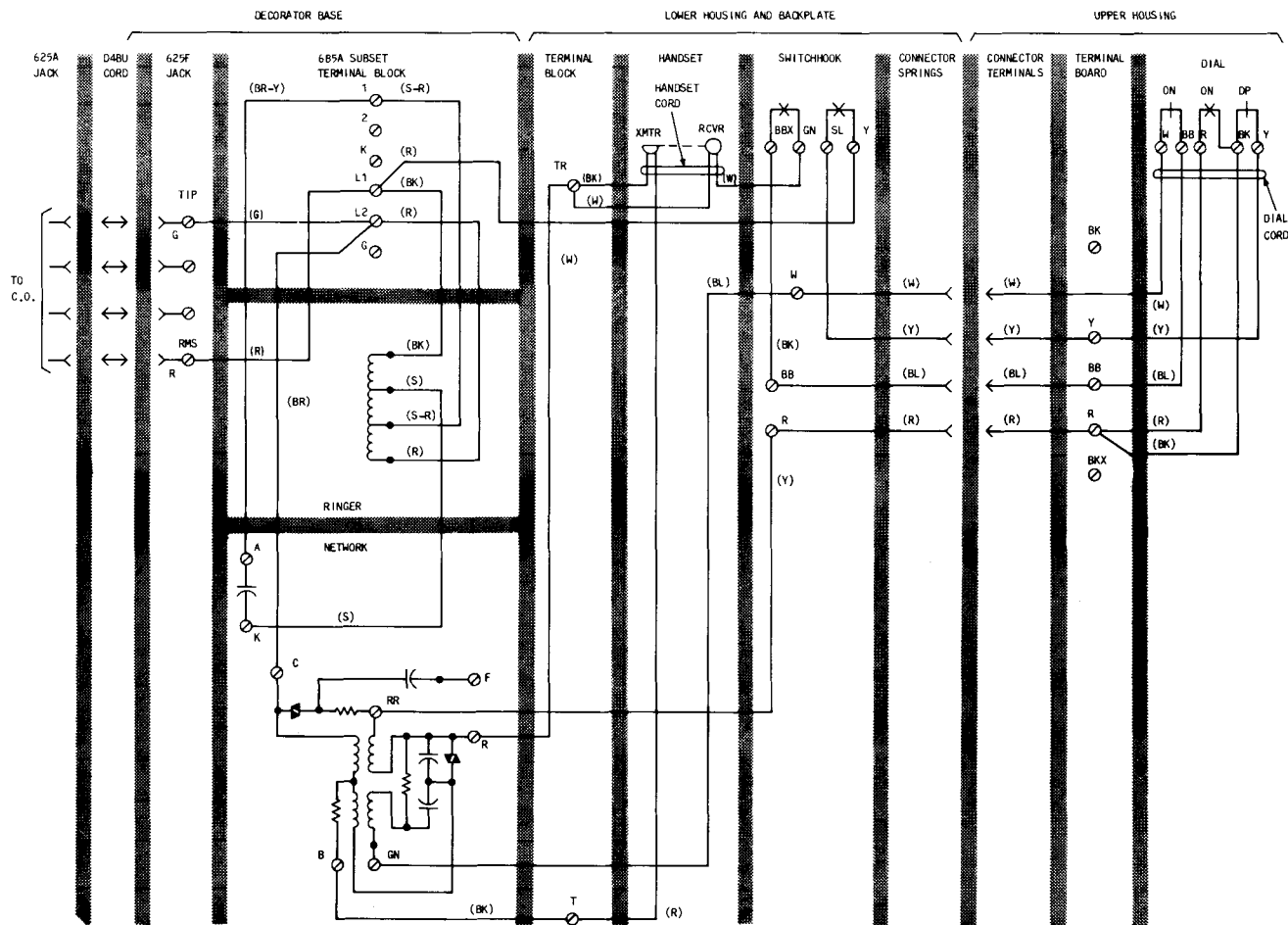


Fig. 6—Modified Set Showing Mounting Cord and Associated Hardware



**Fig. 8—Connection for D-180574 Coin Decorator Telephone Set Using a Decorator Base With Subset**

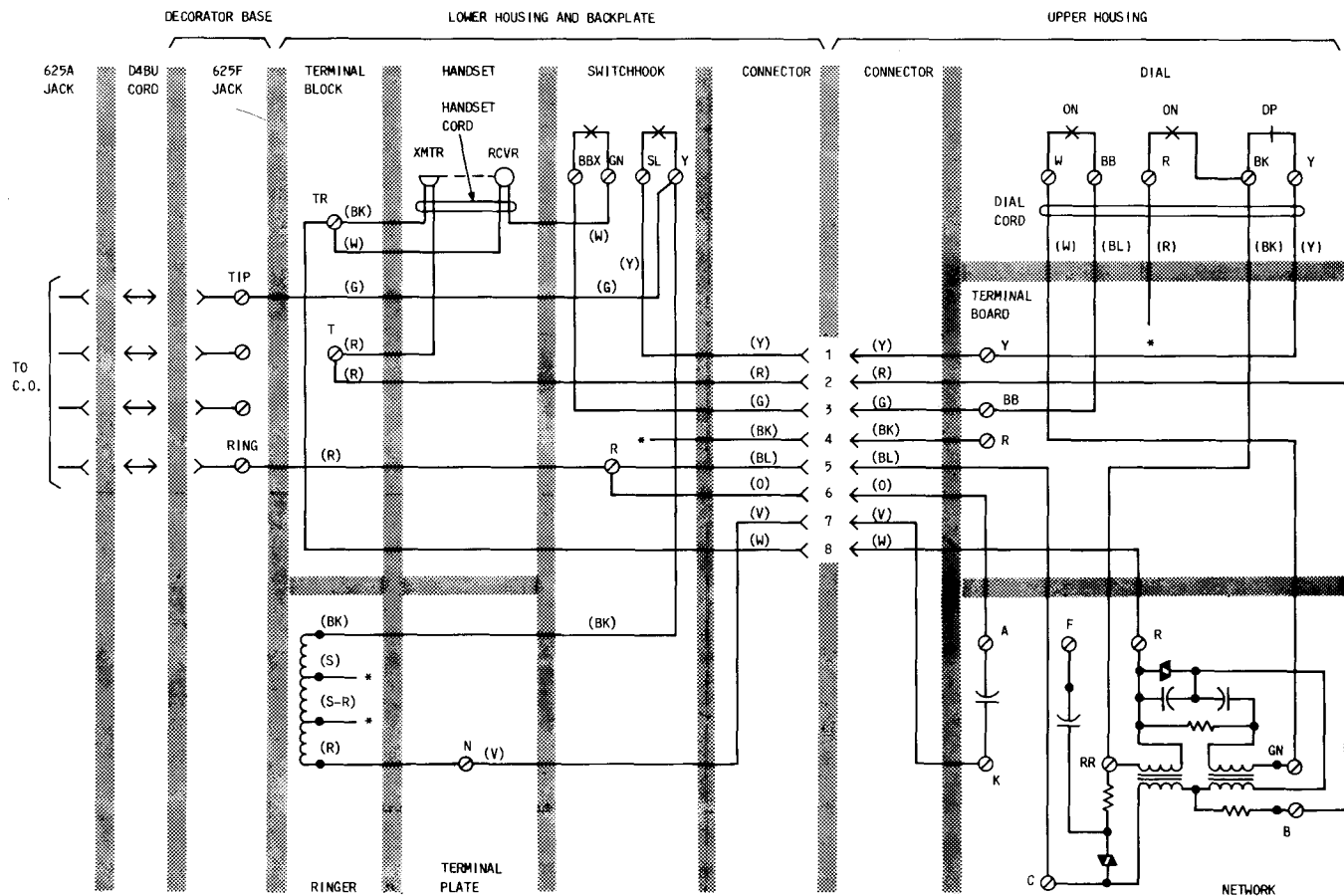
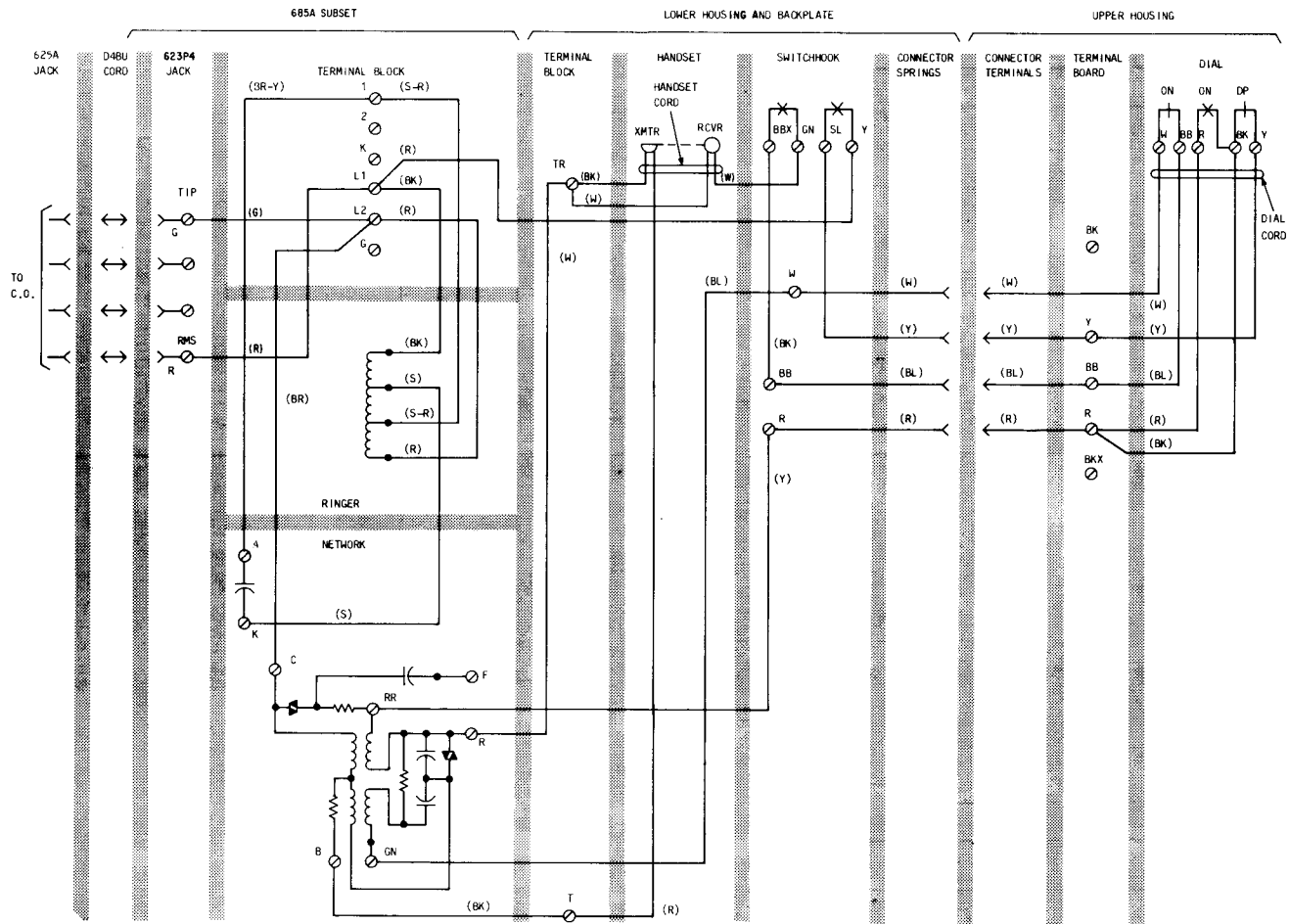


Fig. 9—Connections for D-180574 Coin Decorator Telephone Set Using a Decorator Base Without Subset





**Fig. 10—Connections for D-180574 Coin Decorator Telephone Set, Wall Mounted Using a Subset**



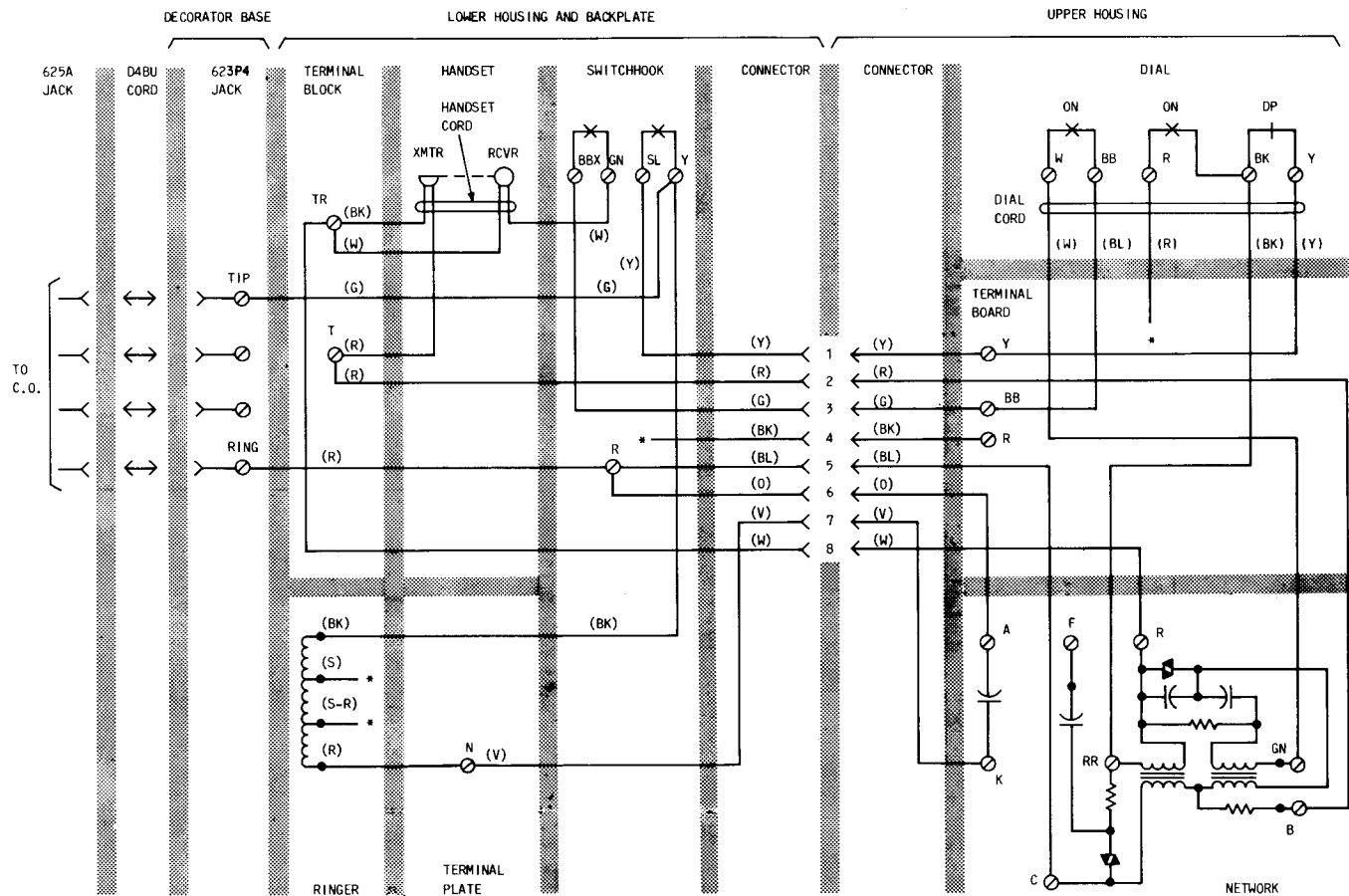


Fig. 11—Connections for D-180574 Coin Decorator Telephone Set, Wall Mounted Without a Subset