

882A200 AND 882B200 TELEPHONE SETS

1. GENERAL

1.01 This section provides identification, installation, and connection information for the 882A200 (MD) and 882B200 DESIGN LINE* telephone (*Coquette*) set (Fig. 1).

*Trademark of AT&T Co.

1.02 This section is reissued to:

- Add 882B200 telephone set
- Show 882A200 telephone set MD
- Revise Fig. 3 and 4

Warning: Telephone apparatus or wiring shall not be installed in a location where minimum separation from other wiring cannot be maintained as specified in Section 460-300-149.



Fig. 1—882A200 DESIGN LINE Telephone Set

1.03 The customer's premises must be properly wired with an appropriate connecting block or jack in order to accept the D4BU-29 plug ended mounting cord.

1.04 The 882-type telephone set is available in white (-58) only.

2. IDENTIFICATION

2.01 The 882-type rotary dial equipped set is a new DESIGN LINE telephone set being made available to the customer. The customer buys the housing and handset from the telephone company and the telephone company retains ownership of the transmission and signaling components.

2.02 The 882B200 telephone set differs from the 882A200 telephone set only in the line switch and associated wiring (Fig. 2, 3, and 4).

2.03 Ordering Guide:

(a) The Coquette is a modular type white (-58) cradle phone equipped with a rotary dial and may be ordered as follows:

- Set, Telephone, 882B200

This includes.

- (1) 882BS200 housing.
- (2) 880HT-58 telephone unit.

(b) For telephone set replaceable components, refer to Table A.

2.04 These telephone sets are intended to be used as single line or two-party desk sets and are not recommended for use on four- or eight-party service.

NOTICE

Not for use or disclosure outside the
Bell System except under written agreement

♦ TABLE A ♦

882-TYPE TELEPHONE SET REPLACEABLE COMPONENTS

MTG CORD	MTG CORD JACK	HANDSET CORD	HANDSET CORD JACK	HANDSET JACK	DIAL	RINGER	TRMTR UNIT	RCVR UNIT	NET.
D4BU-29	623P4	H4DU-58	616P	616LM	6UA-41	P1A	T1	LB1	4228S

3. INSTALLATION AND CONNECTIONS

3.01 These telephone sets are furnished from the factory fully assembled and wired for bridged ringing. To connect the telephone set, plug the mounting cord into a 625-type connecting block or if an existing 548A jack (or equivalent) is provided a 225A adapter is required and must be ordered separately.

3.02 The internal connections for the 882A200 telephone set are shown in Fig. 2 and 3.

3.03 Internal connections for the 882B200 telephone set are shown in Fig. 4.

3.04 To gain access to the interior of the set for wiring changes, refer to the appropriate paragraphs in Part 4.

3.05 Line and Ringer Connections.

- (1) For single line and two-party service, refer to Table B (882A200) or Table D (882B200).
- (2) For adjustments and ringer cutoff feature of the P1A ringer, refer to Section 501-259-101.

4. REMOVAL OF TELEPHONE COMPANY-OWNED COMPONENTS

4.01 When it is desired to discontinue telephone service of the 882-type DESIGN LINE telephone set, proceed as follows.

Note: Retrieve the telephone company-owned components that can be easily removed.

(1) Remove the four mounting screws from the bottom of telephone set and remove the baseplate.

(2) Remove components that are mounted to, or held by the baseplate.

(3) Remove three dial mounting screws and remove the rotary dial.

(4) Unscrew transmitter and receiver caps and remove T1 transmitter and LB1 receive units.

(5) Replace baseplate.

4.02 Follow local procedures for returning telephone company-owned components.

4.03 When it is desired to return a set to Western Electric for repair, it should be packed using the D-180600 Kit of Parts which contains packing materials and instructions.

TABLE B
LINE AND RINGER CONNECTIONS (882A200 TELEPHONE SET)†

WIRE OR LEAD	COLOR	INDIVID. OR BRIDGED	RING PARTY	TIP PARTY		
				NO IDENT GROUND	IDENTIFYING GROUND	
					1000Ω	2650Ω
Inside Wire at Jack	R	R	R	R	R	R
	G	G	G	G	G	G
	Y	Y	Y	Y	Y	Y
	BK	B	B	B	B	B
623P4 Line Jack Assy	R	A	A	L1	F	F
	G	L1	L1	A	L2	L2
	Y	G	G	G	G	G
	BK	L2	L2	L2	*	*
Ringer	R	K	K	K	K	K
	S-R	*	*	*	*	L1
	S	*	*	*	L1	*
	BK	L1	G	G	G	G
Line Switch	Y	A	A	A	L2	L2
	W	F	F	F	B	B

* Insulated and stored.

† For access to set wiring follow applicable steps in Part 4.

TABLE C
**MODIFICATIONS FOR 1A1 or 1A2 KTS (882A200
 TELEPHONE SET)***

LEAD	COLOR	NETWORK TERMINAL	
		REMOVE FROM	CONNECT TO
Line Switch	S	A	L2
	Y	A	L2
	BR	C	G
	G	L1	A
	W	F	C
623P4 Line Jack Assy	G	L1	F
Ringer	BK	L1	F

* For access to telephone set wiring follow applicable steps in Part 4.

◆ TABLE D ◆

LINE AND RINGER CONNECTIONS (882B200 TELEPHONE SET)†

WIRE OR LEAD	COLOR	INDIVID. OR BRIDGED	RING PARTY	TIP PARTY		
				NO IDENT GROUND	IDENTIFYING GROUND	
					1000Ω	2650Ω
Inside Wire at Jack	R	R	R	R	R	R
	G	G	G	G	G	G
	Y	Y	Y	Y	Y	Y
	BK	B	B	B	B	B
623P4 Line Jack Assy	R	A	A	L1	F	F
	G	L1	L1	A	L2	L2
	Y	G	G	G	G	G
	BK	L2	L2	L2	*	*
Ringer	R	K	K	K	K	K
	S-R	*	*	*	*	L1
	S	*	*	*	L1	*
	BK	L1	G	G	G	G
Line Switch	W	F	F	F	B	B
	BL	C	C	C	*	*
	BL-W	A	A	A	*	*
	BR	L2	L2	L2	C	C
	S	L2	L2	L2	A	A

* Insulated and stored.

† For access to set wiring follow applicable steps in Part 4.

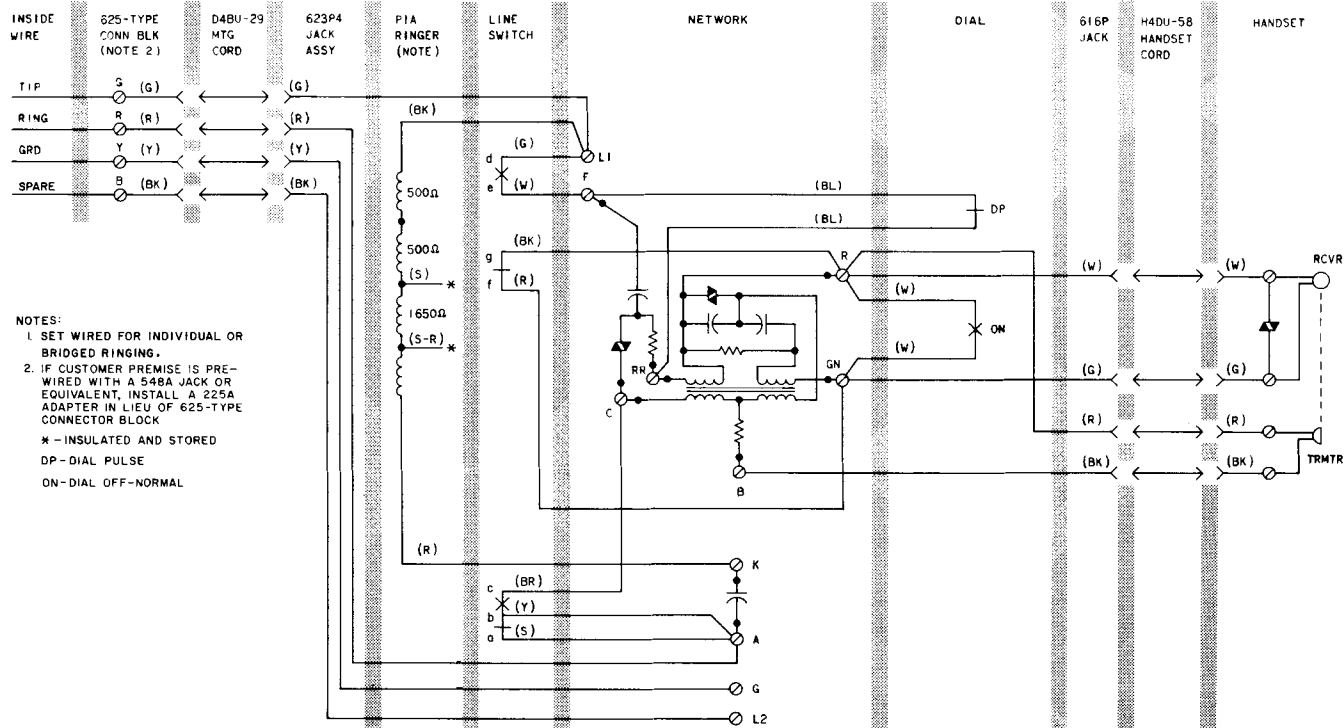


Fig. 2—882A200 Telephone Set, Connections

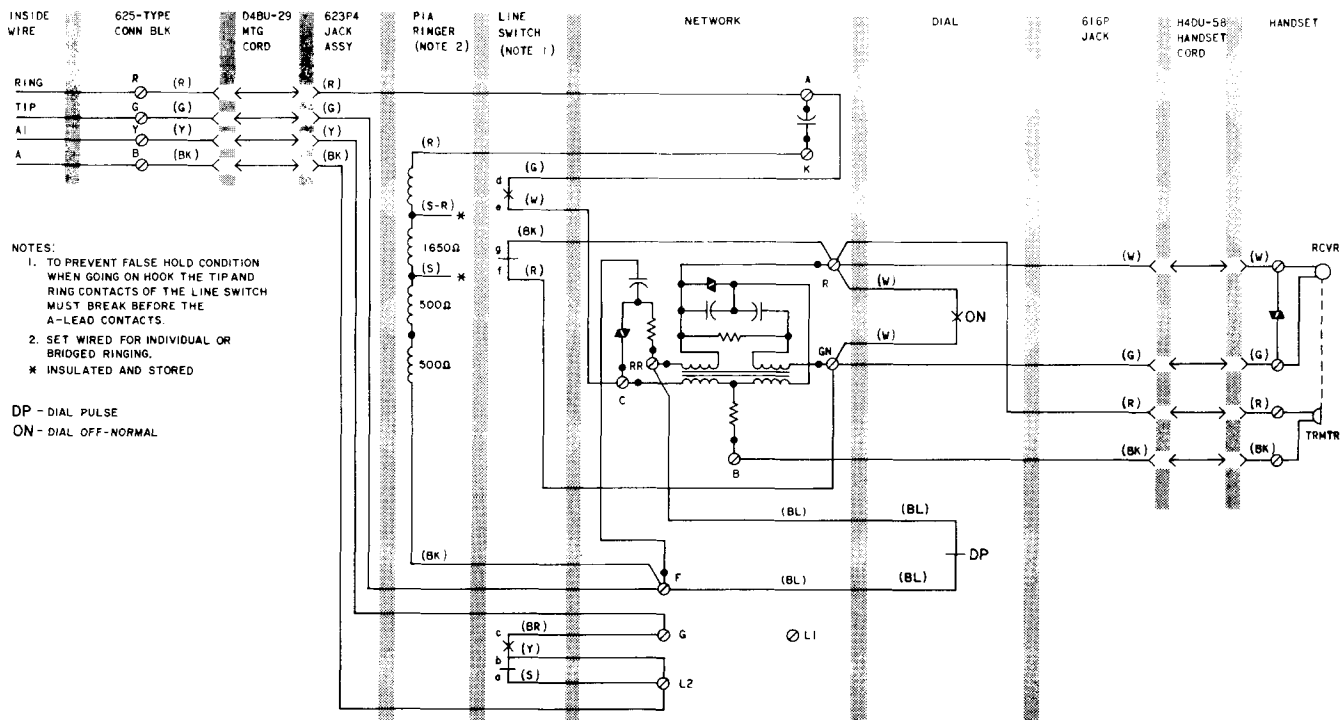


Fig. 3—882A200 Telephone Set Wired for 1A1 or 1A2 KTS

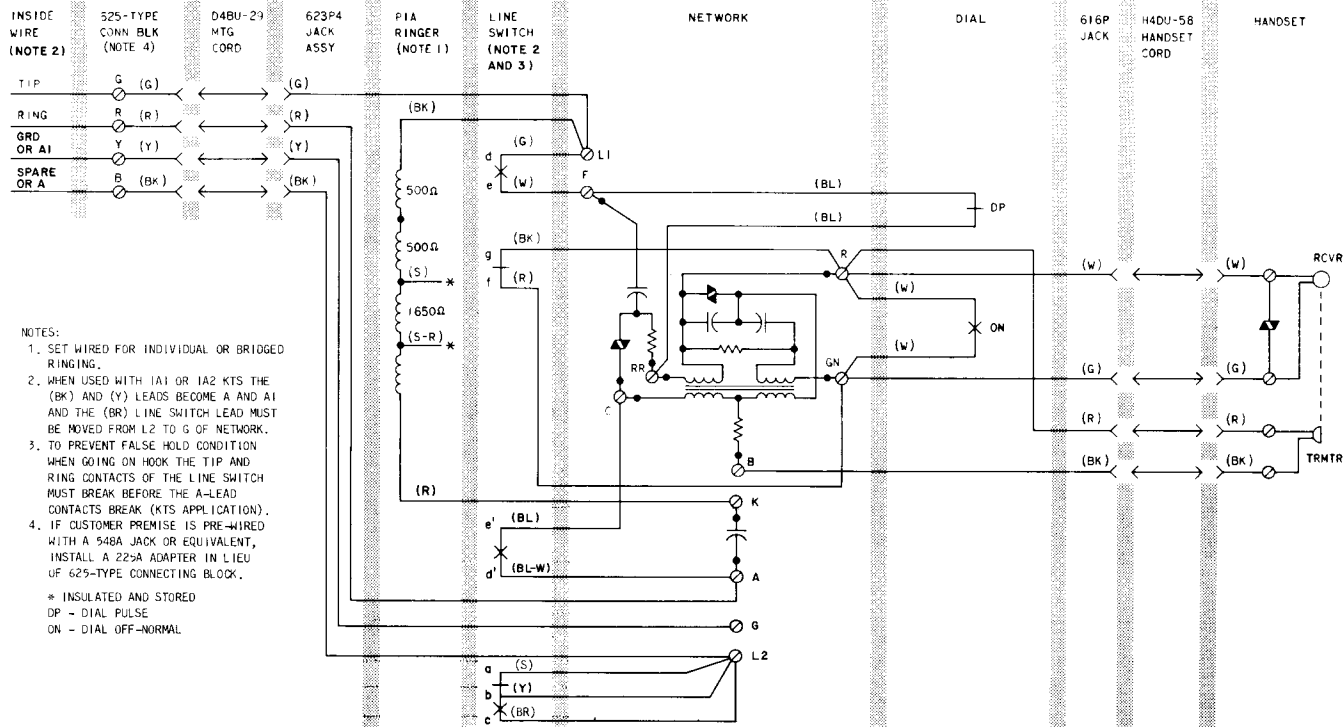


Fig. 4—882B200 Telephone Set, Connections