

## TELEPHONE SETS

### 881A102, 881B102, 881C102, 881A103, 881B103, 881C103, 881A104, 881B104, AND 881C104

#### 1. GENERAL

1.01 This section provides identification, installation, and connection information for the 881A102 (MD), 881B102 (MD), 881C102 (Antique Gold\*\*, Fig. 1); 881A103 (MD), 881B103 (MD), 881C103 (Mediterranean\*\*, Fig. 2), and 881A104 (MD), 881B104 (MD), 881C104 (Early American\*\*, Fig. 3) DESIGN LINE\* telephone (*Cradle Phone*) sets.

\*Trademark AT&TCo.

\*\*Trademark American Telecommunication Corporation

1.02 This section is reissued to:

- Add information on the 881C102, 881C103, and 881C104 (modular) telephone sets (Table A)
- Show 881B102, 881B103, and 881B104 telephone sets (MD).

**Warning:** Telephone apparatus or wiring shall not be installed in a location where minimum separation from other wiring as specified in Section 460-300-149 cannot be maintained.

1.03 The customer's premises must be properly wired with an appropriate connecting block or jack in order to accept the D4BU-29 plug-ended mounting cord.

#### 2. IDENTIFICATION

2.01 ♦The 881A102, B102, C102, 881A103, B103, C103, 881A104, B104, and C104♦ (Rotary Dial) equipped telephone sets are new DESIGN LINE telephone sets being made available to the customer. The customer buys the housing and handset from the telephone company and the



Fig. 1—♦881B102 or 881C102 DESIGN LINE Telephone Set♦

telephone company retains ownership of the transmission and signaling components. The B and C coded sets are equipped with a plug-ended H4DU handset cord instead of an H4EB cord. ♦The C coded sets are equipped with an improved relay-type line switch capable of breaking both tip and ring sides of line when used in 1A1 or 1A2 key telephone systems.♦

Ordering Guide (Refer to Table A)

#### 2.02 Basic Telephone Set Ordering Information:

Example: Set, Telephone, 881C102† is an antique gold cradle phone equipped with a rotary dial.

#### NOTICE

Not for use or disclosure outside the  
Bell System except under written agreement



Fig. 2—881C103 DESIGN LINE Telephone Set



Fig. 3—881C104 DESIGN LINE Telephone Set

†Refer to Table A for available codes and ordering information.

**2.03** These telephone sets are intended to be used as single line or two-party desk sets and are not recommended for use on four- and eight-party service.

### 3. INSTALLATION AND CONNECTIONS

**3.01** These telephone sets are furnished from the factory fully assembled and wired for bridged ringing. To connect the telephone set, plug the mounting cord into a 625A connecting block or if the existing jack is a 548A or equivalent, a 225A adapter is required and must be ordered separately.

**3.02** The internal connections for the 881A102, 881B102, 881A103, 881B103, 881A104, and 881B104 telephone sets, for nonkey system use, are shown in Fig. 7. Internal connections for the 881C102, 881C103, and 881C104 for nonkey and KTS use, are shown in Fig. 9.

**3.03** Connections for 1A KTS do not require any telephone set modifications and are wired same as for nonkey system use (all type sets).

**3.04** Connections for use with 1A1 or 1A2 KTS are shown in Fig. 8 for A and B coded sets and Fig. 9 for C coded sets. Table C includes necessary wiring modifications required for 1A1 or 1A2 KTS use (for A and B coded sets only).

**3.05** To gain access to the interior of these sets for wiring changes, refer to appropriate paragraph in Part 4.

#### 3.06 Line and Ringer Connections:

- (1) For single line and two-party service, refer to Table B.
- (2) For adjustments and ringer cutoff feature of the P1A ringer, refer to Section 501-259-101.

◆ TABLE A ◆

## AVAILABLE CODES AND ORDERING GUIDE

TEL SET CODE	TEL SET BASE	DIAL	TRMTR UNIT	RCVR UNIT	MTG CORD	HANDSET CORD	DESCRIPTION
881C102	840404941	6U-120 or 6UA-120	T1	LB1	D4BU-29	H4DU-58	Rotary Dial Antique Gold Cradle Phone
881C103						H4DU-03	Rotary Dial Mediterranean Cradle Phone
881C104						H4DU-03	Rotary Dial Early American Cradle Phone

#### 4. REMOVAL OF TELEPHONE COMPANY-OWNED COMPONENTS

4.01 When it is desired to discontinue telephone service of these DESIGN LINE telephone sets, proceed as follows:

**Note:** Remove the telephone company-owned components that can be easily removed.

- (1) Remove four bottom cover mounting screws from bottom of telephone set and remove bottom cover (Fig. 4).
- (2) Remove four telephone set base mounting screws and withdraw the base (Fig. 5).
- (3) Remove three dial mounting screws and remove the rotary dial (Fig. 6).
- (4) Unscrew transmitter and receiver caps and remove T1 transmitter and LB1 receiver units.
- (5) Replace bottom cover (Fig. 4).

4.02 Follow local procedures for returning telephone company-owned components.

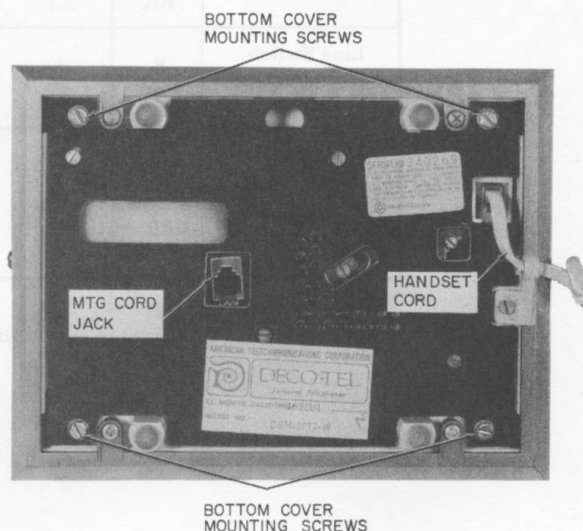


Fig. 4—Current Model Telephone Set, Bottom View

4.03 When it is desired to return a set to Western Electric for repair, it should be packed using the D-180600 Kit of Parts which contain packing materials and instructions.

◆ TABLE B ◆

## LINE AND RINGER CONNECTIONS †

WIRE OR LEAD	COLOR	INDIVID. OR BRIDGED	RING PARTY	TIP PARTY		
				NO IDENT GROUND	IDENTIFYING GROUND	
					1000Ω	2650Ω
Inside Wire at Jack	R	R	R	R	R	R
	G	G	G	G	G	G
	Y	Y	Y	Y	Y	Y
	BK	B	B	B	B	B
623P4 Jack	R	A	A	L1	F	F
	G	L1	L1	A	L2	L2
	Y	G	G	G	G	G
	BK	L2	L2	L2	*	*
Ringer	R	K	K	K	K	K
	S-R	*	*	*	*	L1
	S	*	*	*	L1	*
	BK	L1	G	G	G	G
Line Switch (A and B Codes Only)	Y	A	A	A	L2	L2
	W	F	F	F	B	B
Line Switch (C Codes Only)	W	F	F	F	B	B
	BL	C	C	C	*	*
	BL-W	A	A	A	*	*
	BR	L2	L2	L2	C	C
	S	L2	L2	L2	A	A

\* Insulated and stored.

† For access to set wiring follow applicable steps in Part 4.

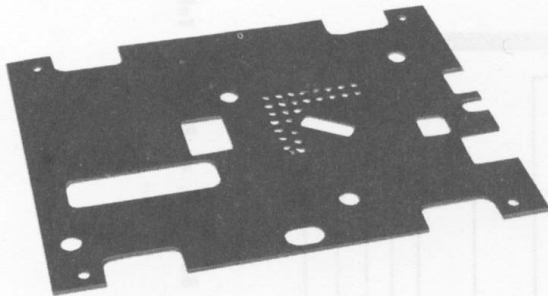
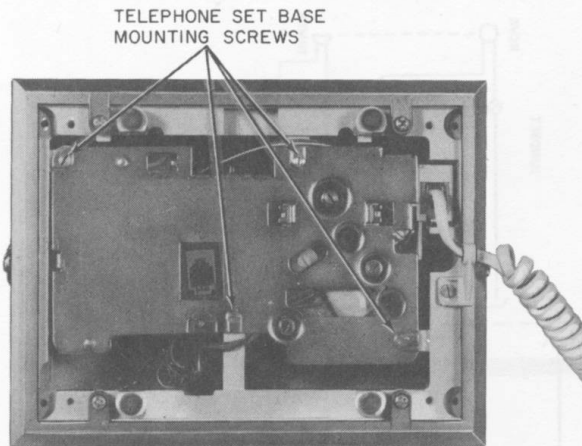


Fig. 5—Removing Telephone Set Base

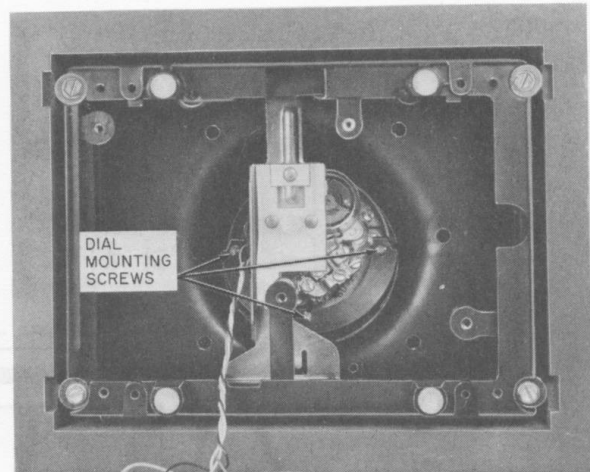


Fig. 6—Removing Dial

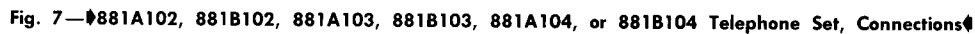
♦ TABLE C ♦

MODIFICATIONS FOR 1A1 OR 1A2 KTS  
(A AND B CODES ONLY)\*  
(SEE NOTE)

LEAD	COLOR	NETWORK TERMINAL	
		REMOVE FROM	CONNECT TO
Line Switch	S	A	L2
	Y	A	L2
	BR	C	G
	G	L1	A
	W	F	C
623P4 Line Jack Assy	G	L1	F
Ringer	BK	L1	F

\* For access to telephone set wiring follow applicable steps in Part 4.

Note: For 1A1 or 1A2 KTS (C code only), refer to Fig. 9, Note 3.



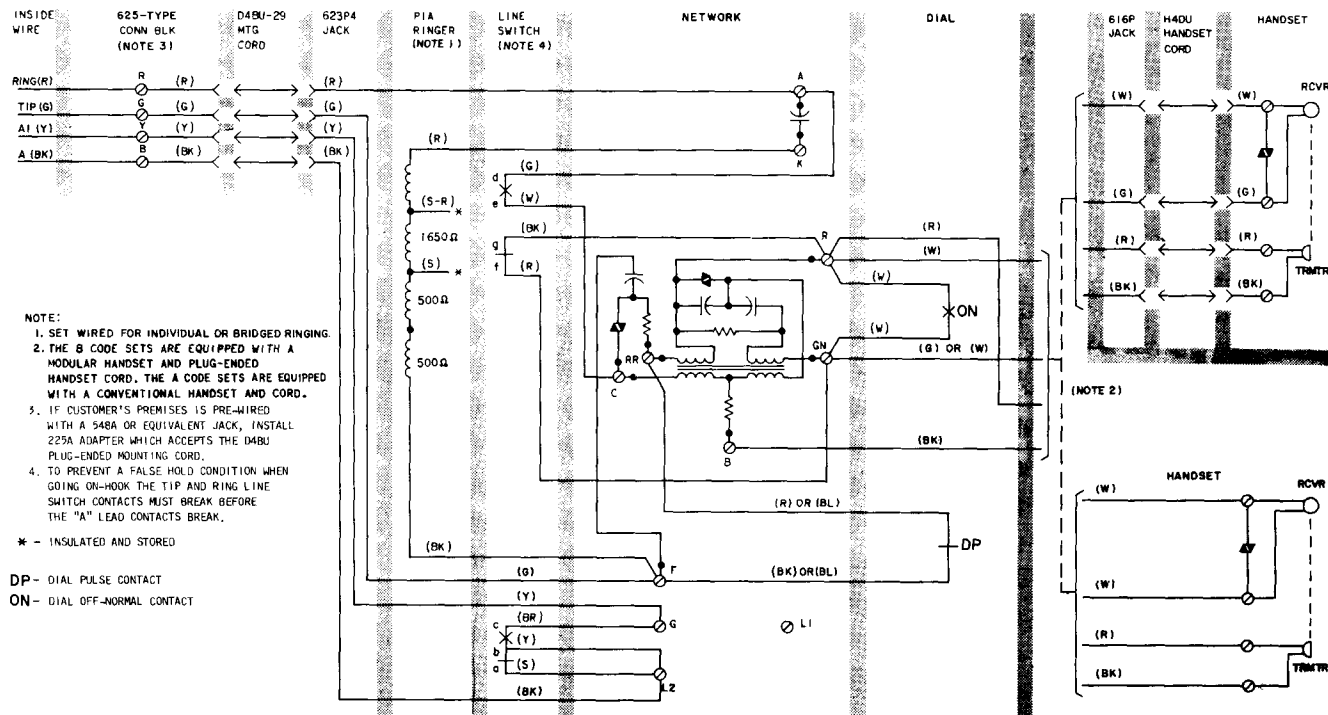


Fig. 8—881A102, 881B102, 881A103, 881B103, 881A104, or 881B104 Telephone Set Wired for 1A1 or 1A2 KTS†

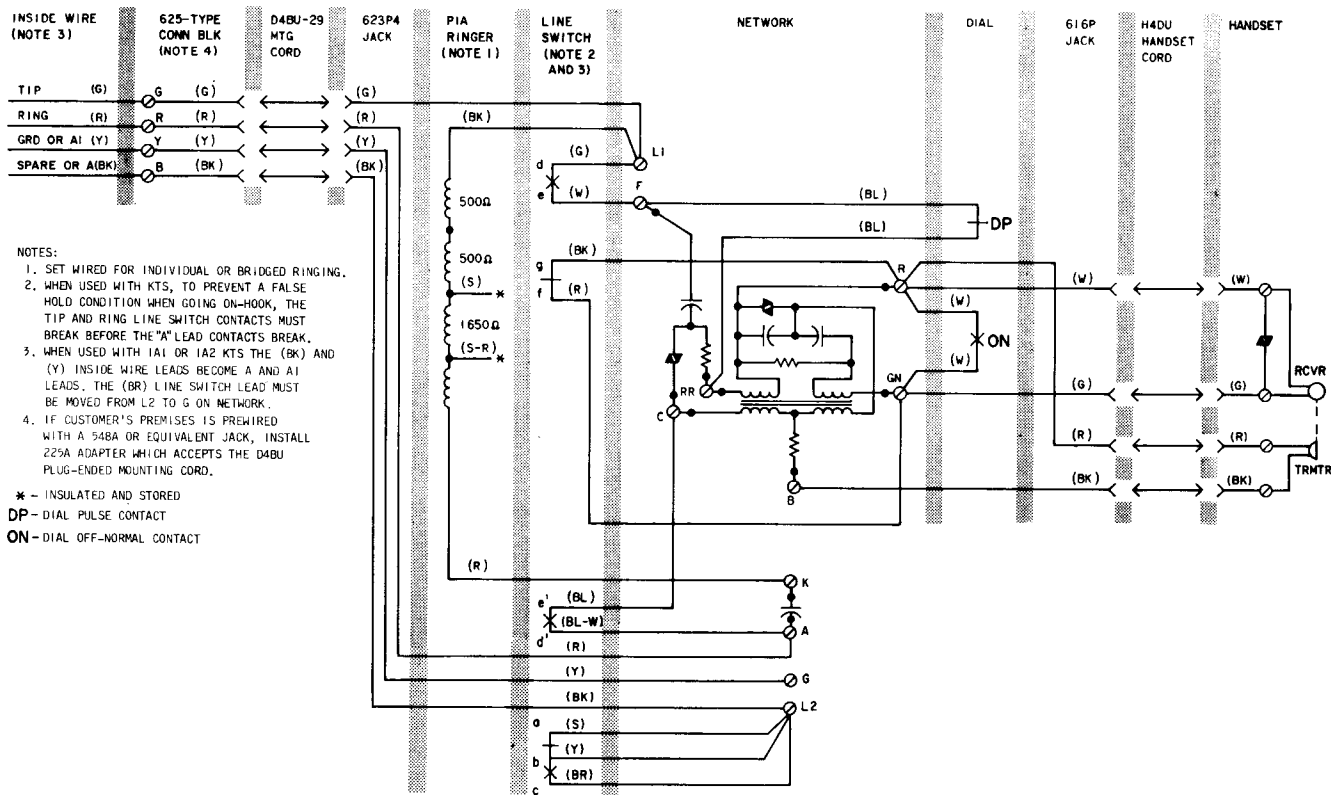


Fig. 9—881C102, 881C103, or 881C104 Telephone Set, Connections