

CS881C100, CS881C101, CS2881CG100, AND CS2881CG101 TELEPHONE SETS IDENTIFICATION, CONNECTIONS, AND MAINTENANCE

1. GENERAL

1.01 This section contains information for the CS881C100, CS881C101, CS2881CG100, and CS2881CG101 DESIGN LINE* decorator telephones, (CHESTPHONE† telephone). (Fig. 1).

1.02 Whenever this section is reissued the reasons for reissue will be listed in this paragraph.

1.03 Telephone sets having the prefix "CS" (CS881C100, CS881C101, CS2881CG100, and CS2881CG101) added to the set code do not include telephone company-owned components. They are for sale to the customer in their entirety (the housing as well as the transmission and signaling components).

2. IDENTIFICATION

2.01 The CS881C100 and CS881C101 (rotary dial) or CS2881CG100 and CS2881CG101 (TOUCH-TONE* telephone dial) equipped telephone sets are DESIGN LINE decorator telephones that are available to the customer.

2.02 Refer to Table A for set codes and components.

3. CONNECTIONS

3.01 These telephone sets are intended to be used as single line sets for bridged service only and are not for use on multiparty service.

3.02 Refer to Fig. 2, 3, and 4 for connection information.

*Trademark of American Telephone and Telegraph Company.

†Trademark of American Telecommunication Corporation.



Fig. 1 — CS2881CG100 DESIGN LINE Decorator Telephone

4. MAINTENANCE

4.01 No adjustments or wiring changes are to be performed on these sets on the customer's premises.

4.02 When it is desired to return a set to Western Electric for repair, it should be packed using an appropriate protective packing material.

NOTICE

Not for use or disclosure outside the
Bell System except under written agreement

TABLE A
SET CODES AND COMPONENT PARTS

TEL SET CODE	DIAL	DIAL INSERT COLOR	RINGER	TRMTR UNIT	RCVR UNIT	MTG CORD	MTG CORD JACK	HANDSET CORD	HANDSET JACK	CABINET	PLASTIC COLOR
CS881C100	8HA-120	Gold	P3A	T1	U3 or U5	D4BU-29	623P4	H4DU-60	616P	Simulated Walnut	Beige
CS881C101								H4DU-03		Black Leatherette	Black
CS2881CG100	35AH3D or 72D3A *	None						H4DU-60		Simulated Walnut	Beige
CS2881CG101								H4DU-03		Black Leatherette	Black

*The 72D3A dial will replace the 35AH3D dial.

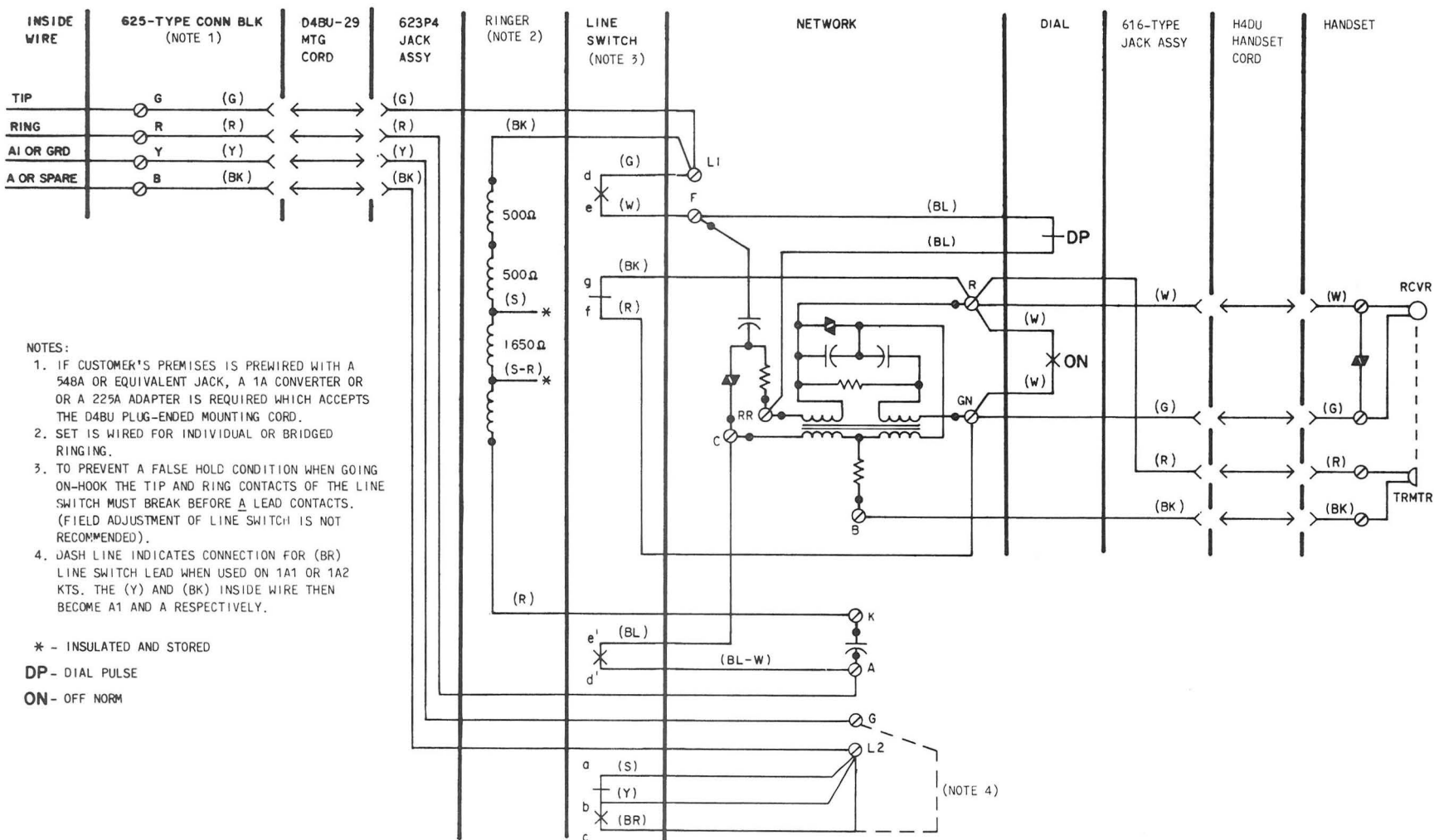


Fig. 2—CS881C100 and CS881C101 Telephone Set, Connections

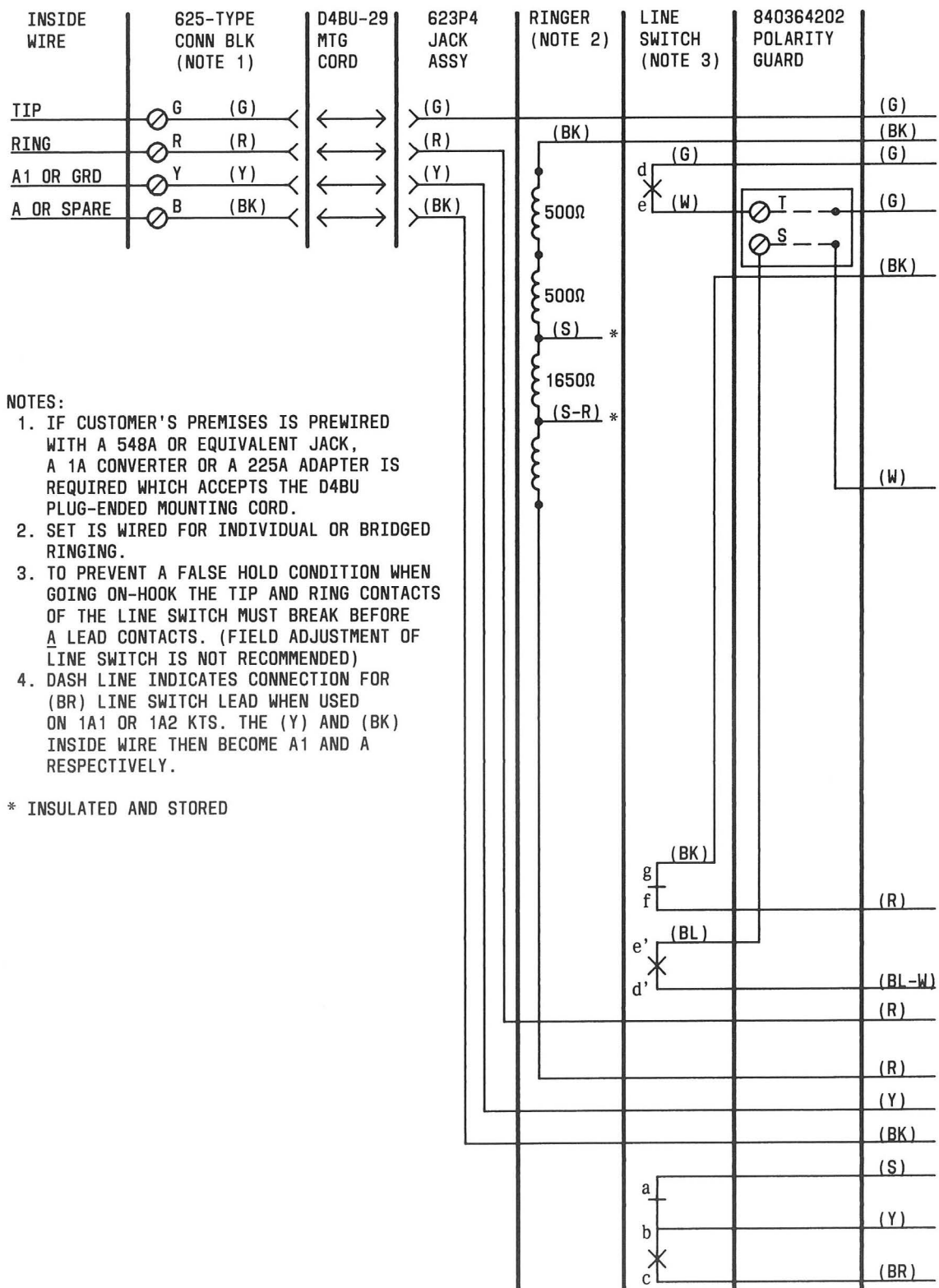


Fig. 3—CS2881CG100 and CS2881CG101 Telephone Set, Connections (Equipped With 35AH3D Dial) (Sheet 1 of 2)

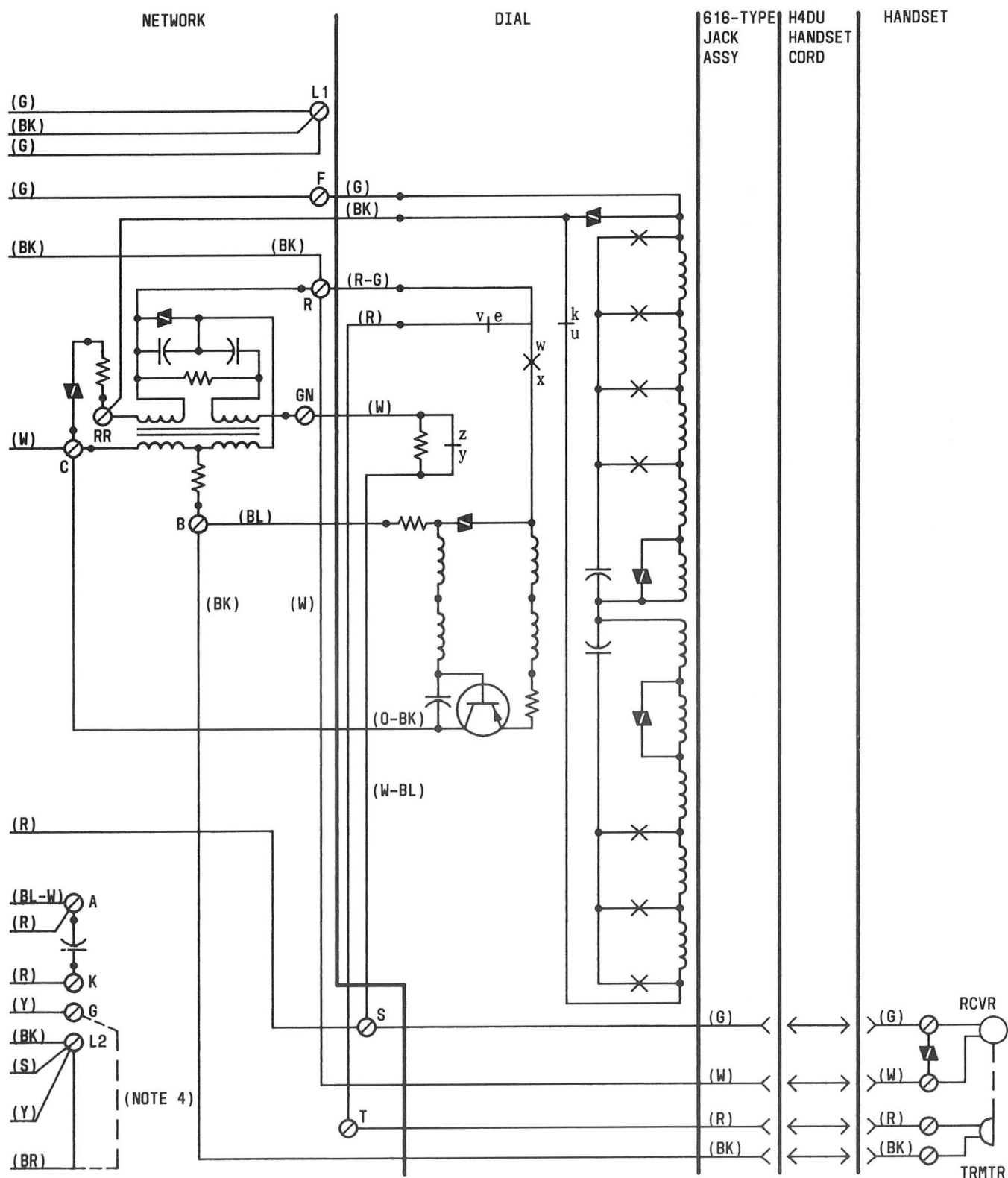


Fig. 3—CS2881CG100 and CS2881CG101 Telephone Set, Connections (Equipped With 35AH3D Dial) (Sheet 2 of 2)

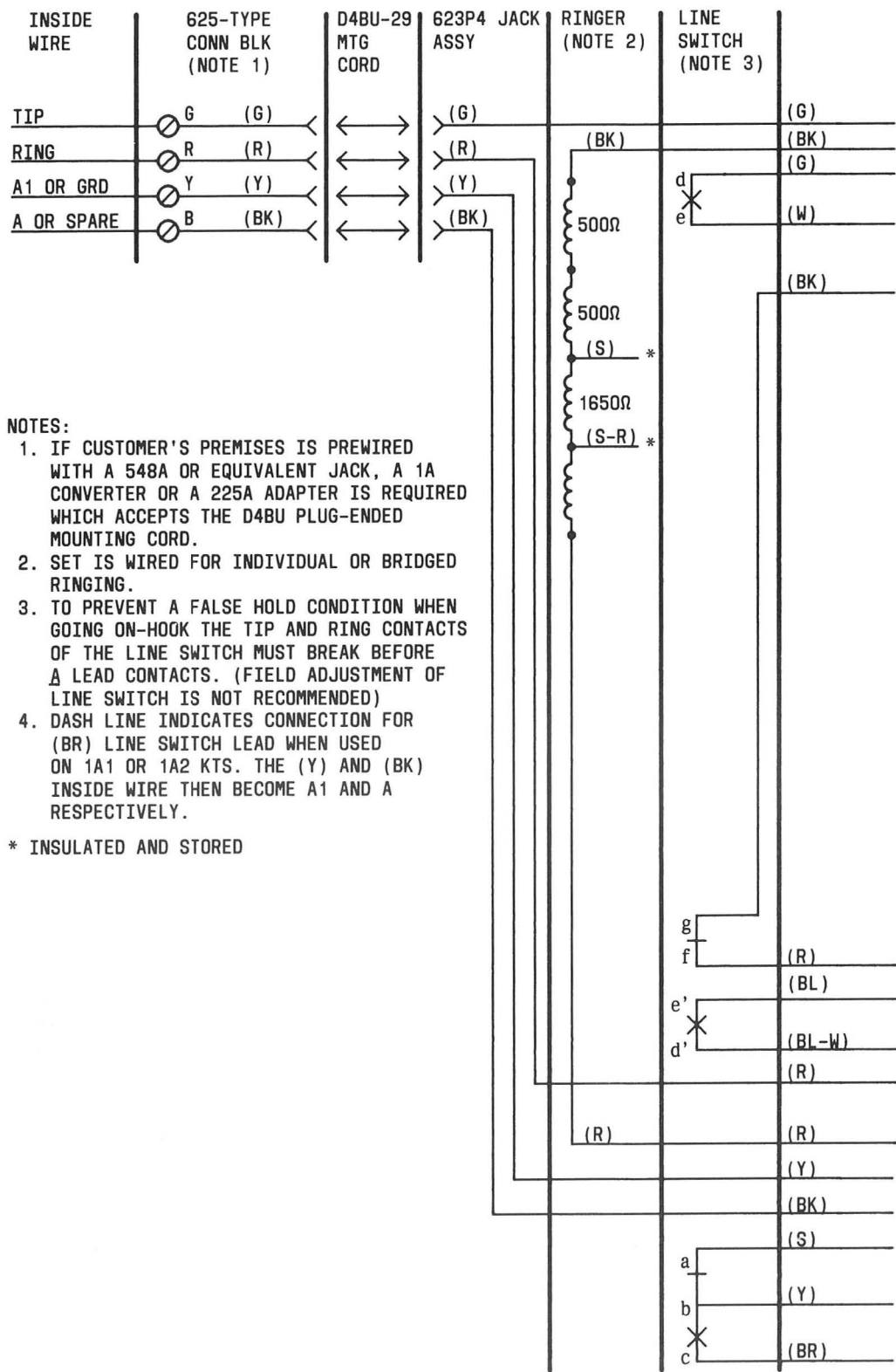


Fig. 4—CS2881CG100 and CS2881CG101 Telephone Set, Connections (Equipped With 72D3A Dial) (Sheet 1 of 2)

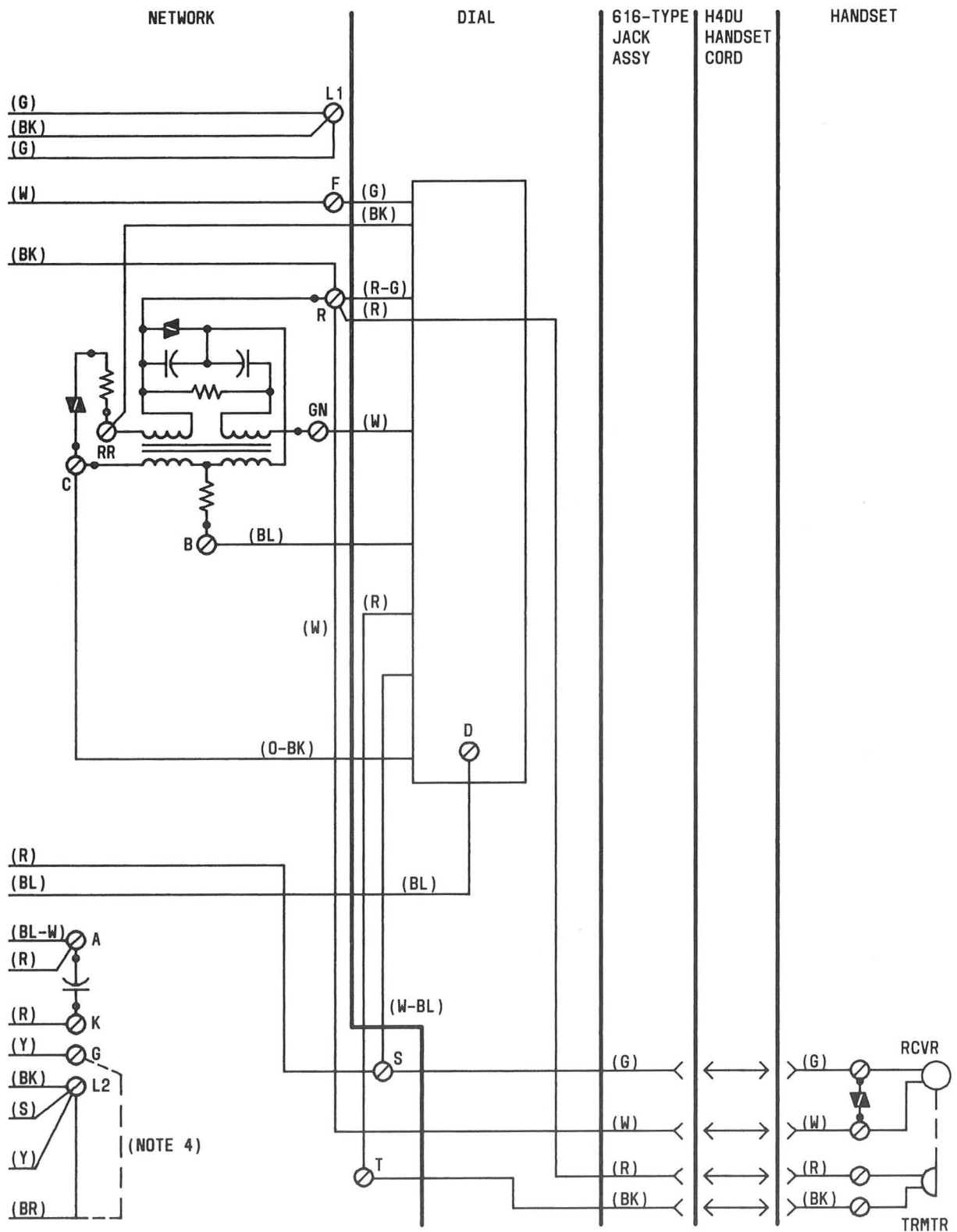


Fig. 4—CS2881CG100 and CS2881CG101 Telephone Set, Connections (Equipped With 72D3A Dial) (Sheet 2 of 2)